

W1-10L

W1-10R

HORIZONTAL ALIGNMENT

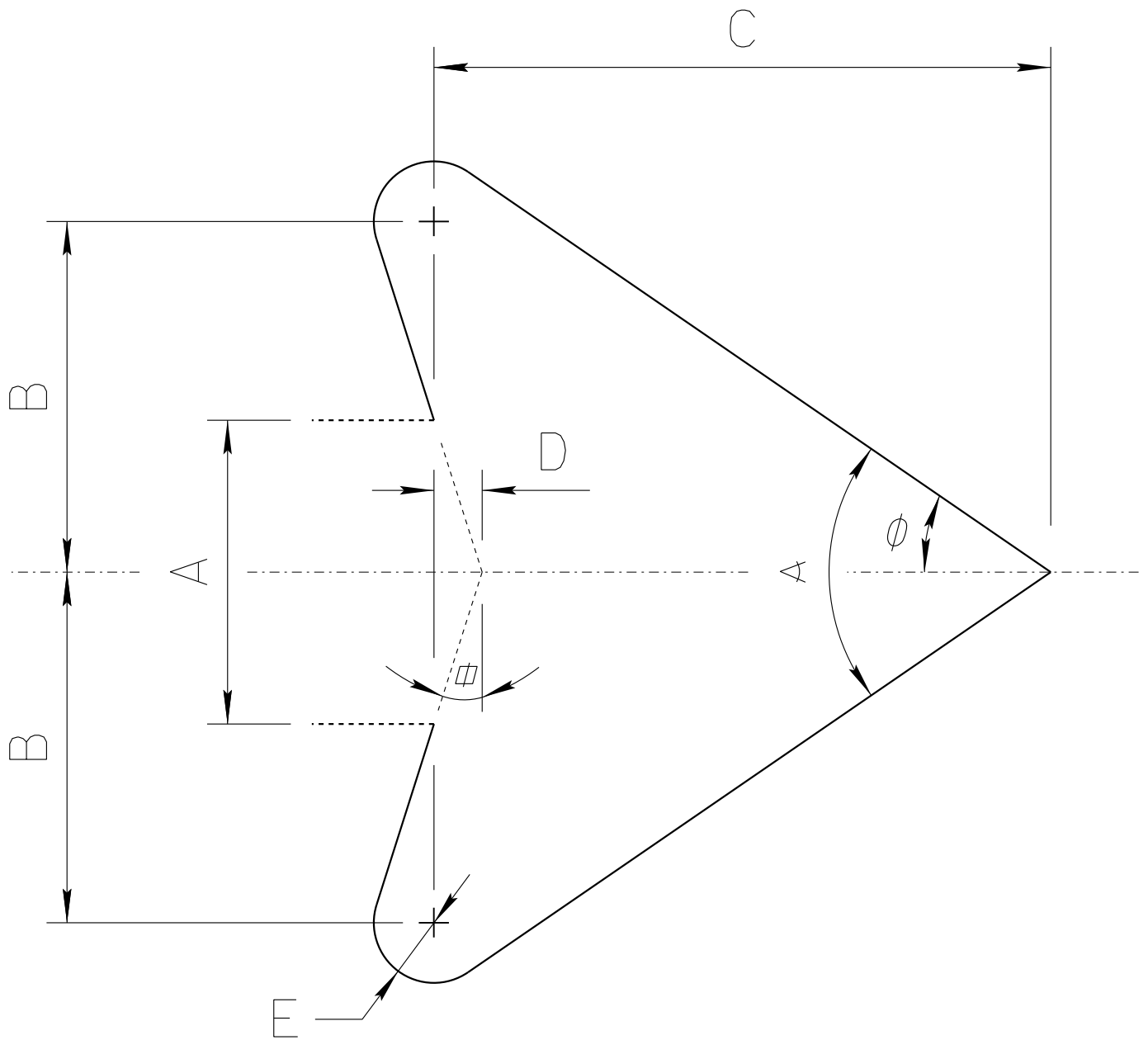
A	B	C	D	E	F	G	H	J	K	L	M
18	.375	.625	5.844	4.523	5.844	4.643	3.442	1.361	1.401	2.121	2.401
24	.375	.625	7.285	5.604	7.285	5.784	4.283	1.721	1.761	2.601	3
30	.5	.75	9.727	7.525	9.807	7.805	5.804	2.241	2.321	3.482	4
36	.625	.875	12.169	9.367	12.209	9.707	7.205	2.842	2.922	4.363	5
48	.75	1.25	17	13.129	17	13.510	10	3.963	4.083	6.084	7

**C**

N	P	Q	R	S	T
5.844	45°	3.082	1.601	5.764	1.5
7.285	45°	4.123	2	7.685	1.5
9.727	45°	5.163	2.601	9.607	1.875
12.169	45°	6.204	3	11.528	2.25
17	45°	8.286	4	15.371	3

COLORS: LEGEND — BLACK  
BACKGROUND— YELLOW (RETROREFLECTIVE)

# ADOT STANDARD ARROW HEAD DETAILS



$A = \text{Arrow Shaft Stroke Width}$

$B = 1.15 \times A$

$C = 2.025 \times A$

$D = 0.16169 \times A$

$E = 0.2 \times A$

$\alpha = 17.92^\circ$

$\phi = 34.519^\circ$

$\alpha = 69.038^\circ$

ARIZONA DEPARTMENT OF TRANSPORTATION  
TRAFFIC ENGINEERING GROUP

DRAWN:

L. LOPEZ

DATE:

AUGUST/2019