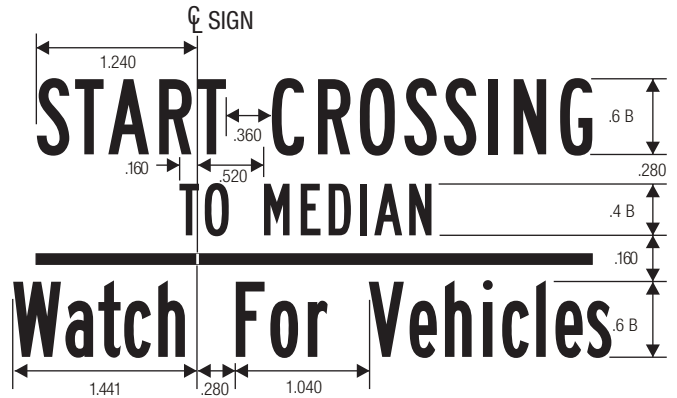
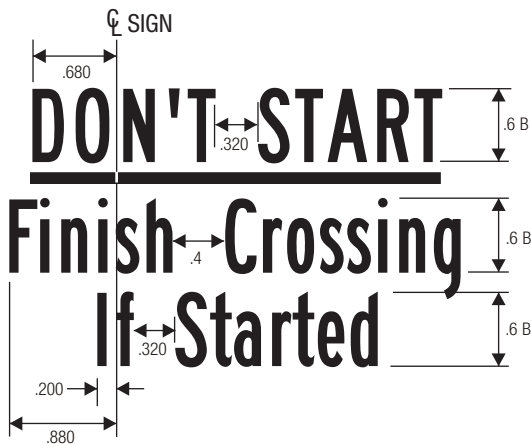


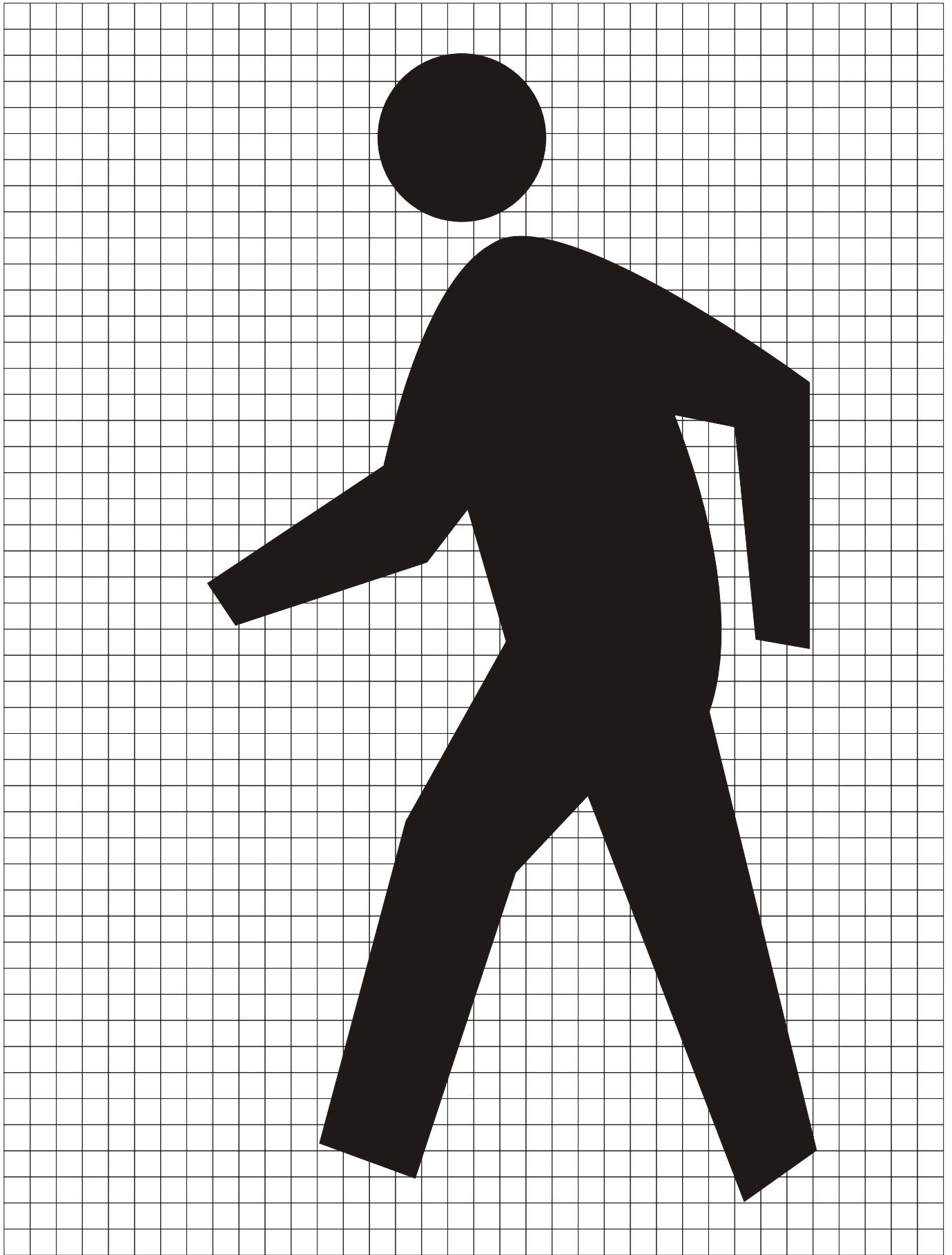
R10-3d

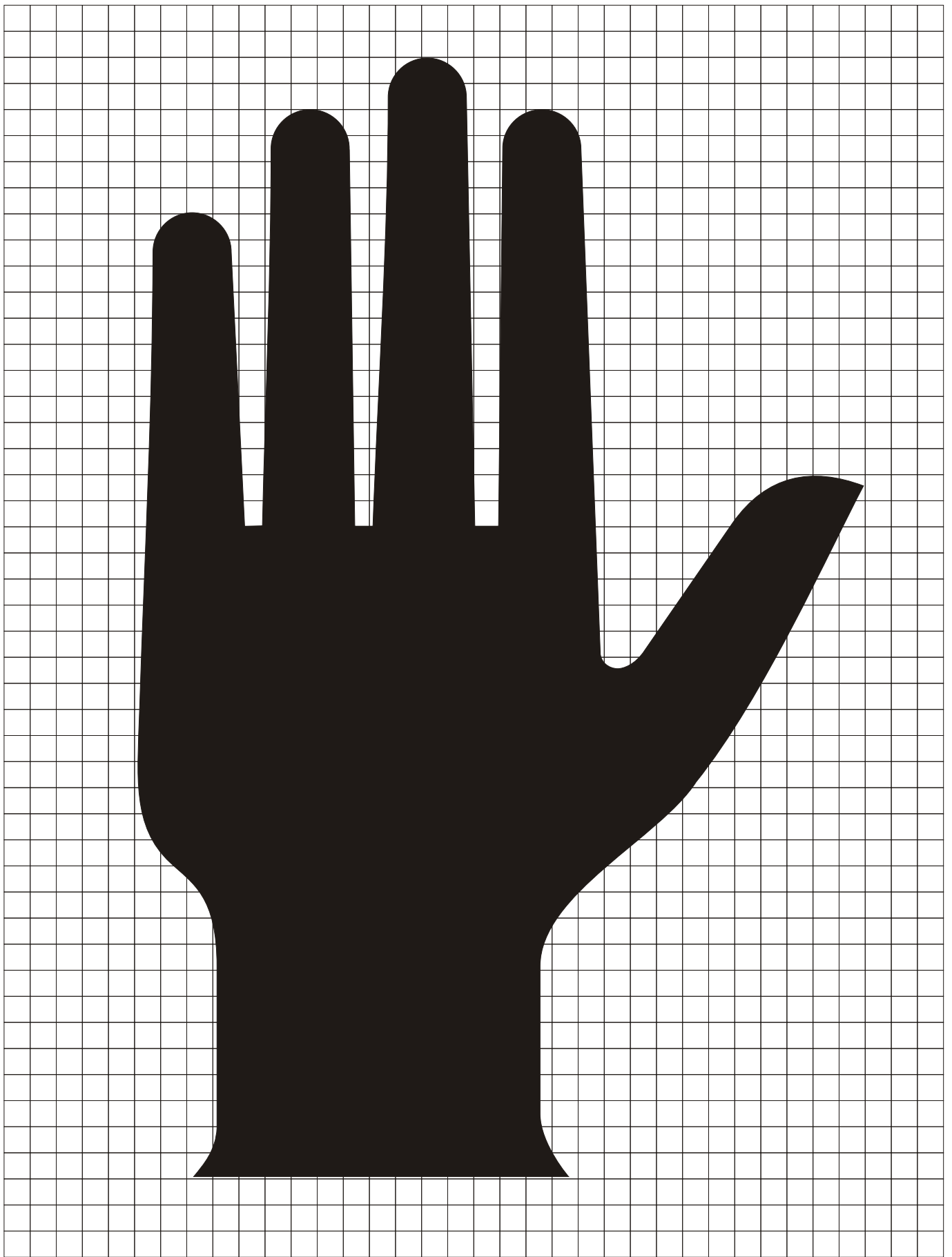
PUSH BUTTON EDUCATIONAL (TWO-STAGE CROSSING)



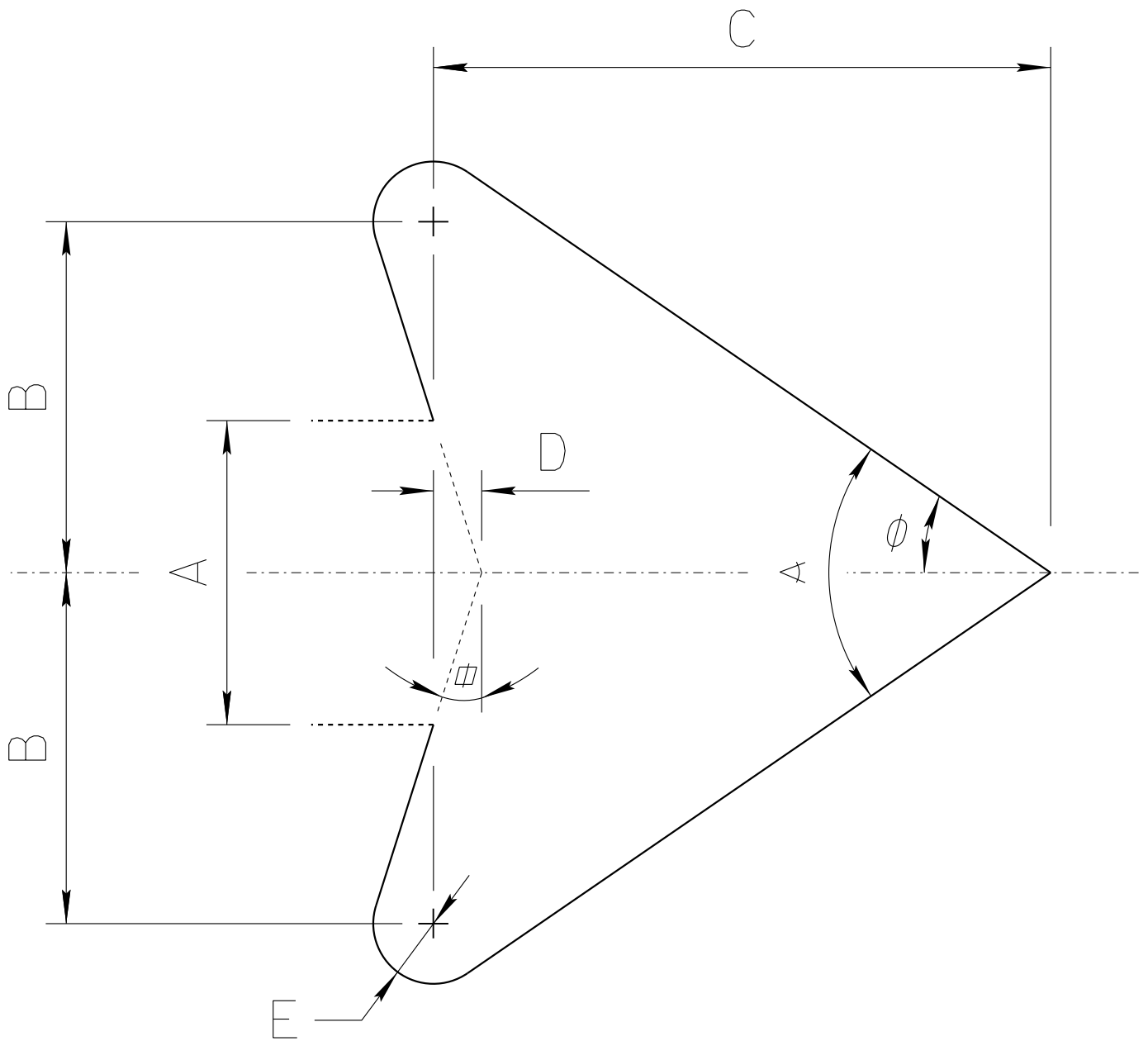
- COLORS: LEGEND, BORDER — BLACK  
 BACKGROUND — WHITE (RETROREFLECTIVE)  
 UPRAISED HAND SYMBOL — ORANGE (RETROREFLECTIVE) ON BLACK  
 PEDESTRIAN SYMBOL — WHITE (RETROREFLECTIVE) ON BLACK

\*See pages 6-8 and 6-10 for symbol designs.





# ADOT STANDARD ARROW HEAD DETAILS



$A = \text{Arrow Shaft Stroke Width}$

$B = 1.15 \times A$

$C = 2.025 \times A$

$D = 0.16169 \times A$

$E = 0.2 \times A$

$\alpha = 17.92^\circ$

$\phi = 34.519^\circ$

$\alpha = 69.038^\circ$

ARIZONA DEPARTMENT OF TRANSPORTATION  
TRAFFIC ENGINEERING GROUP

DRAWN:

L. LOPEZ

DATE:

AUGUST/2019