

R6-3a

DIVIDED HIGHWAY CROSSING

\*Series 2000 Standard Alphabets.

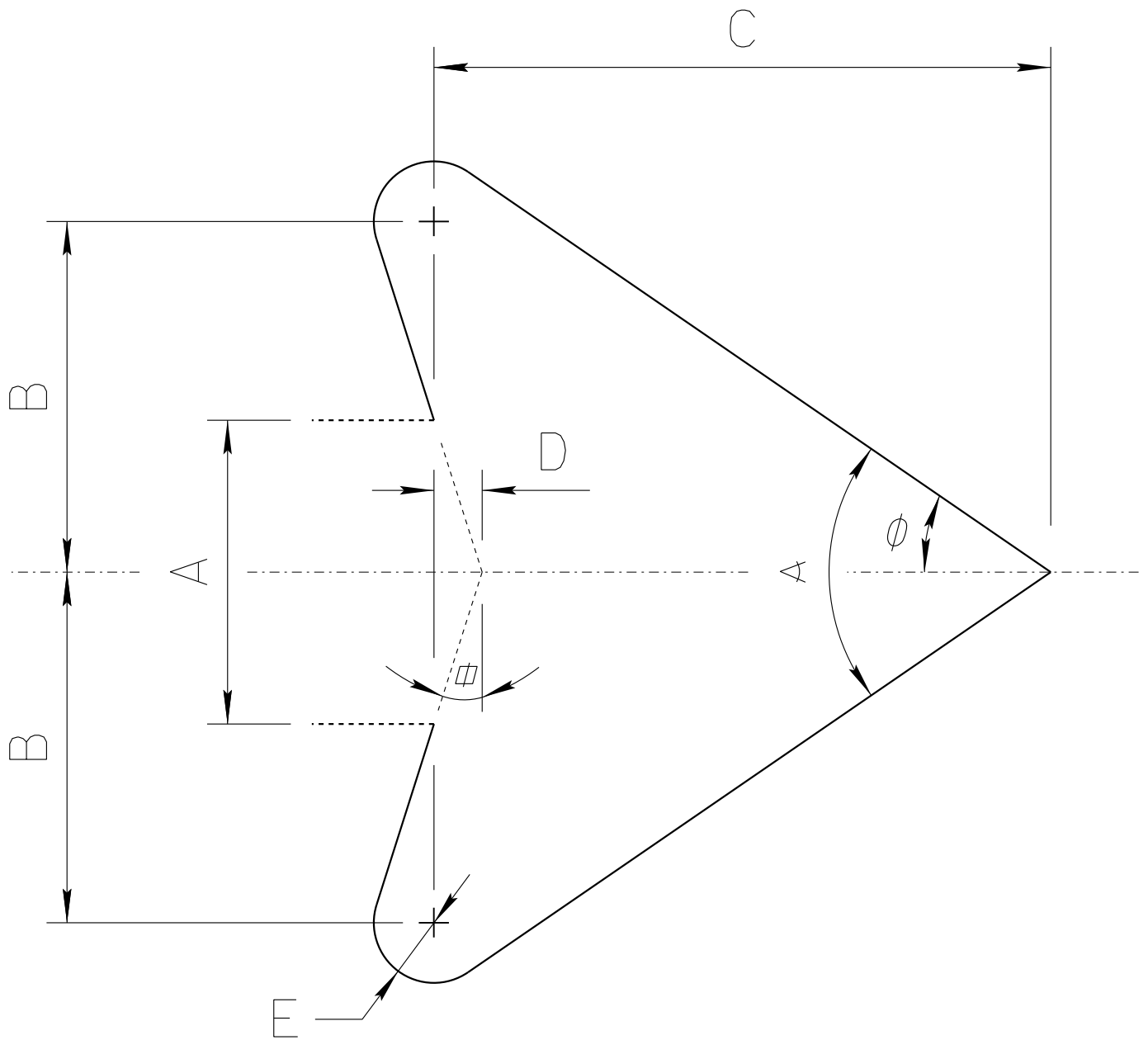
**C**

A	B	C	D	E	F	G	H	J	K	L	M
24	18	.375	.625	2.5	2 E	2	2.5	3.5	1	5.875	9.5
30	24	.5	.75	3	3 E	2.625	3.375	4.625	1.375	8.516	12.643
36	30	.625	.875	3.688	4 E	3	4.133	5.867	1.625	11.354	15.851

N	P	Q	R	S	T
5	1.5	1	1	6.75	1.5
6.669	2.026	1.350	1.350	9.842	1.875
8.364	2.465	1.668	1.677	13.051	2.25

COLORS: LEGEND — BLACK  
 BACKGROUND — WHITE (RETROREFLECTIVE)

# ADOT STANDARD ARROW HEAD DETAILS



$A = \text{Arrow Shaft Stroke Width}$

$B = 1.15 \times A$

$C = 2.025 \times A$

$D = 0.16169 \times A$

$E = 0.2 \times A$

$\alpha = 17.92^\circ$

$\phi = 34.519^\circ$

$\alpha = 69.038^\circ$

ARIZONA DEPARTMENT OF TRANSPORTATION  
TRAFFIC ENGINEERING GROUP

DRAWN:

L. LOPEZ

DATE:

AUGUST/2019