

R6-3

DIVIDED HIGHWAY CROSSING

*Series 2000 Standard Alphabets.
 . ***Reduce spacing to fit.

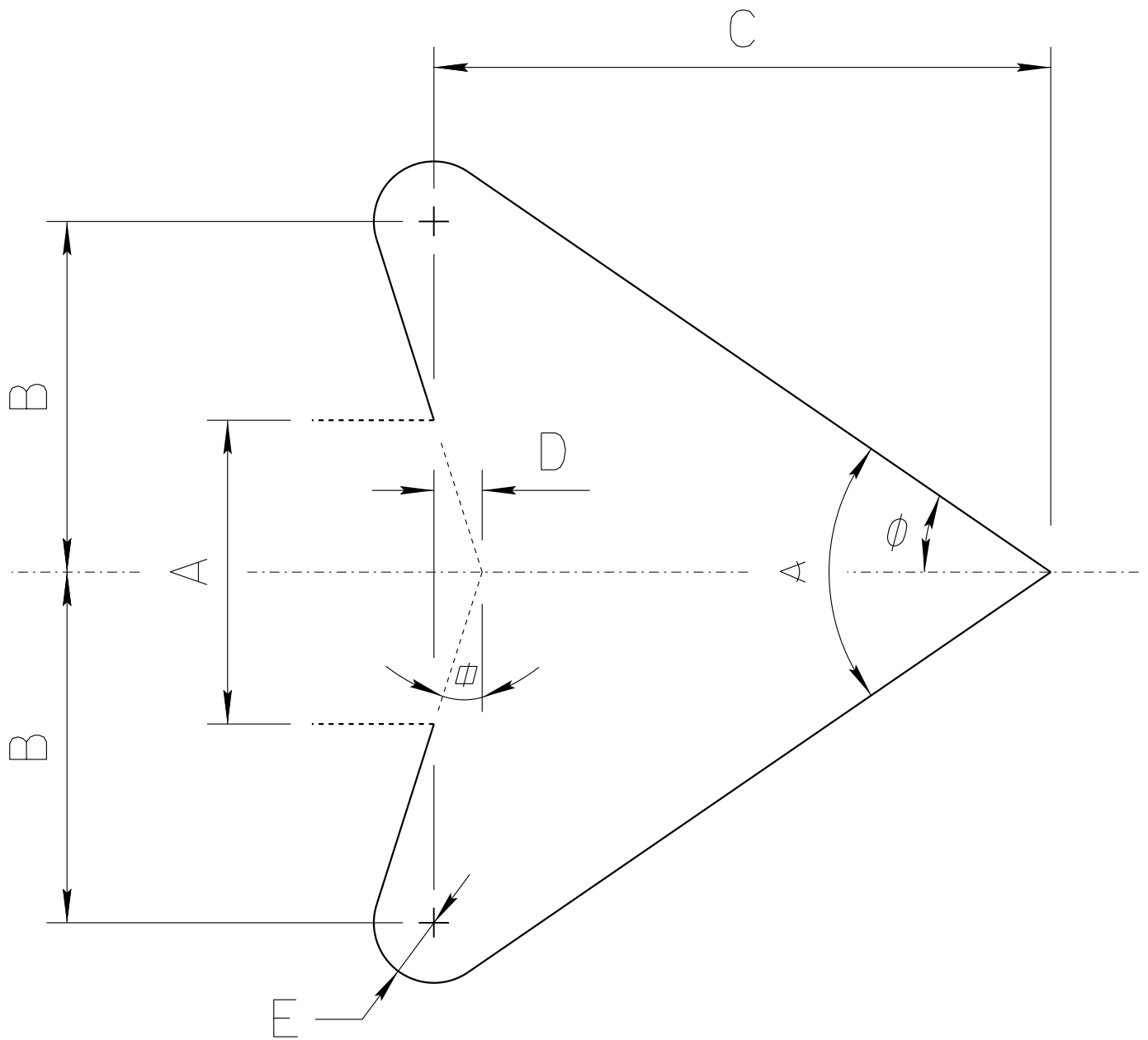
C

A	B	C	D	E	F	G	H	J	K	L	M
24	18	.375	.625	2.5	2 E	1	3.5	5.875	9.5	5	1.5
30	24	.5	.75	3	3 E	1.375	4.625	8.516	12.602	6.646	2
36	30	.625	.875	3.688	4 E	1.625	5.688	11.354	15.377	8.064	2.428

N	P	Q	R
1	1	6.608	1.5
1.327	1.327	9.842	1.875
1.62	1.62	13.051	2.25

COLORS: LEGEND — BLACK
 BACKGROUND — WHITE (RETROREFLECTIVE)

ADOT STANDARD ARROW HEAD DETAILS



$A =$ Arrow Shaft Stroke Width

$B = 1.15 \times A$

$C = 2.025 \times A$

$D = 0.16169 \times A$

$E = 0.2 \times A$

$\alpha = 17.92^\circ$

$\phi = 34.519^\circ$

$\angle = 69.038^\circ$

ARIZONA DEPARTMENT OF TRANSPORTATION
TRAFFIC ENGINEERING GROUP

DRAWN:

L. LOPEZ

DATE:

AUGUST/2019