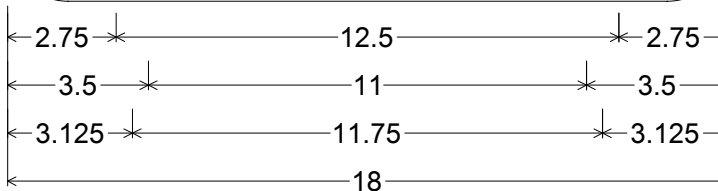
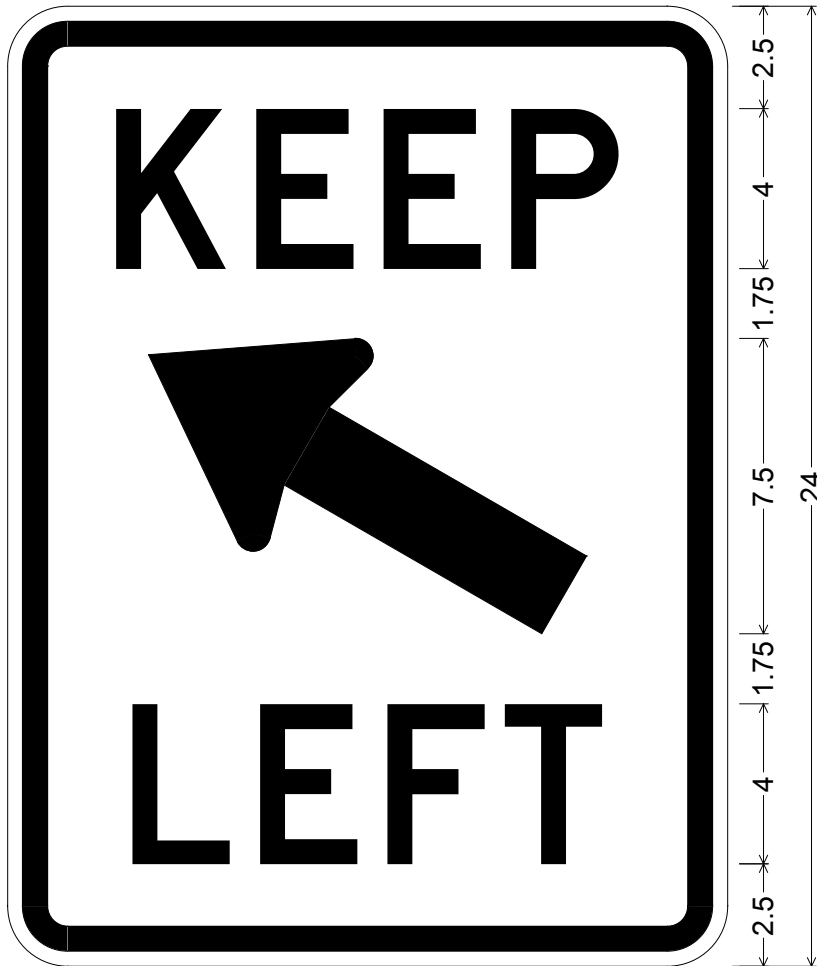


CODE: R4-8b

SIZE: 18" x 24"
MINIMUM



R04-08b(18x24-MIN)WHT;
1.500" Radius, 0.625" Border, 0.375" Indent, Black on White;
"KEEP" D;
Standard Arrow Custom 12.000" X 6.000" 150°;
"LEFT" D;

ALL DIMENSIONS ARE IN INCHES



COLORS:

LEGEND & BORDER - BLACK (NON-REFL)
BACKGROUND - WHITE (REFL)

ARIZONA DEPARTMENT OF TRANSPORTATION
TRAFFIC ENGINEERING GROUP

DRAWN:

L. LOPEZ

DATE:

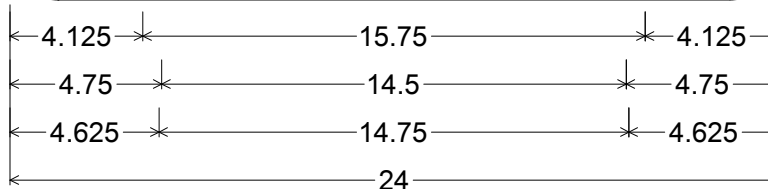
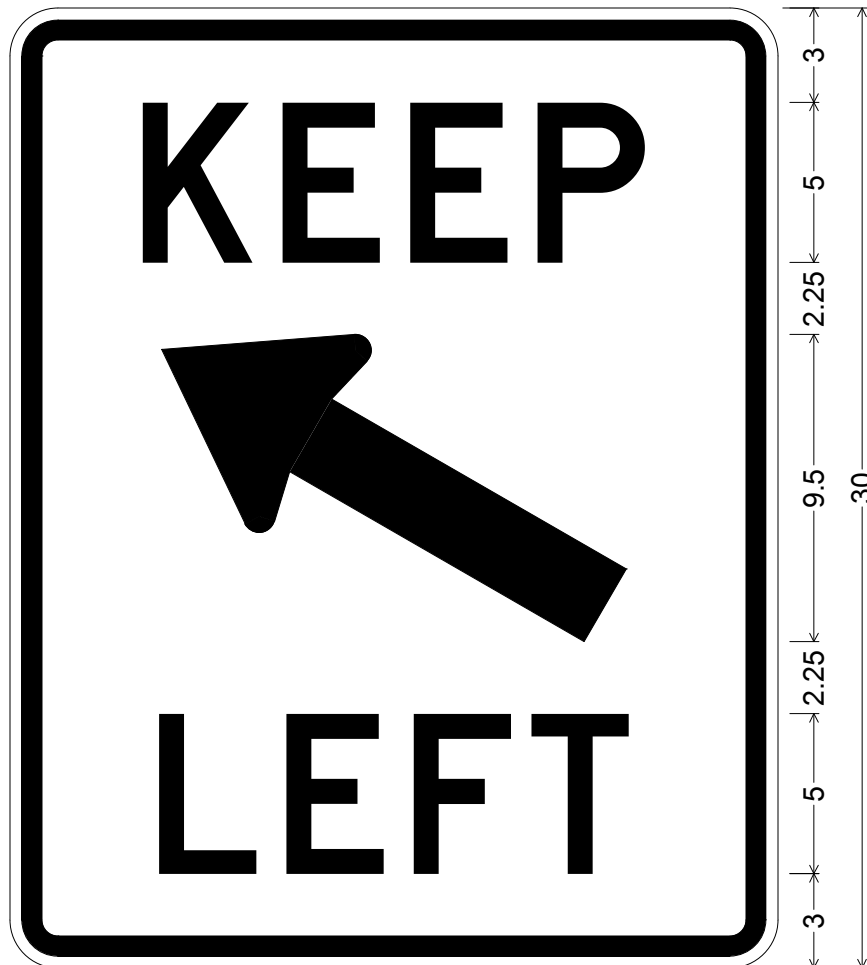
DECEMBER / 2012

APPROVED:

SIGNATURE ON FILE

CODE: R4-8b

SIZE: 24" x 30"
STANDARD



R04-08b(24x30-STD)WHT;

1.500" Radius, 0.625" Border, 0.375" Indent, Black on White;

"KEEP" D;

Standard Arrow Custom 16.000" X 7.000" 150°; "LEFT" D;

ALL DIMENSIONS ARE IN INCHES



COLORS:

LEGEND & BORDER - BLACK (NON-REFL)

BACKGROUND - WHITE (REFL)

ARIZONA DEPARTMENT OF TRANSPORTATION
TRAFFIC ENGINEERING GROUP

DRAWN:

L. LOPEZ

DATE:

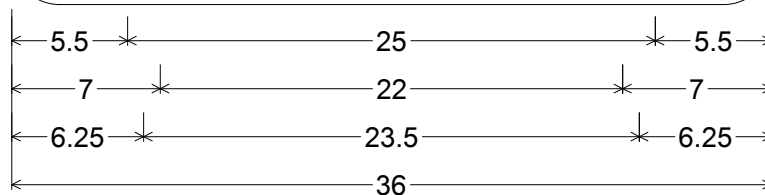
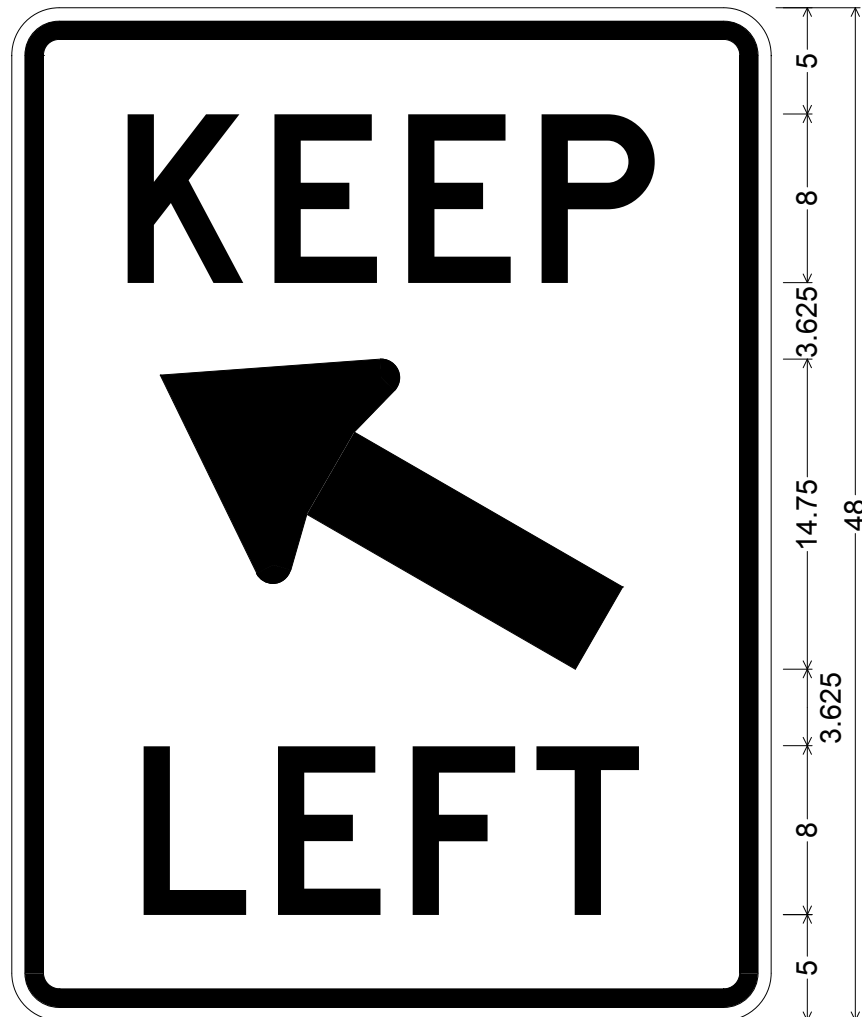
DECEMBER / 2012

APPROVED:

SIGNATURE ON FILE

CODE: R4-8b

SIZE: 36" x 48"
EXPRESSWAY



R04-08b(36x48-EXPWY)WHT;
2.250" Radius, 0.875" Border, 0.625" Indent, Black on White;
"KEEP" D specified length;
Standard Arrow Custom 24.000" X 12.000" 150°;
"LEFT" D;

ALL DIMENSIONS ARE IN INCHES



COLORS:

LEGEND & BORDER - BLACK (NON-REFL)
BACKGROUND - WHITE (REFL)

ARIZONA DEPARTMENT OF TRANSPORTATION
TRAFFIC ENGINEERING GROUP

DRAWN:

L. LOPEZ

DATE:

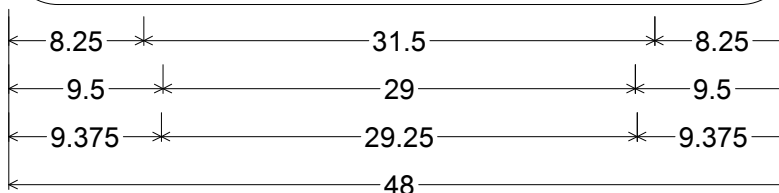
DECEMBER / 2012

APPROVED:

SIGNATURE ON FILE

CODE: R4-8b

SIZE: 48" x 60"
FREEWAY



R04-08b(48x60-FWY)WHT;
3.000" Radius, 1.250" Border, 0.750" Indent, Black on White;
"KEEP" D;
Standard Arrow Custom 32.000" X 14.000" 150°;
"LEFT" D specified length;

ALL DIMENSIONS ARE IN INCHES



COLORS:

LEGEND & BORDER - BLACK (NON-REFL)
BACKGROUND - WHITE (REFL)

ARIZONA DEPARTMENT OF TRANSPORTATION
TRAFFIC ENGINEERING GROUP

DRAWN:

L. LOPEZ

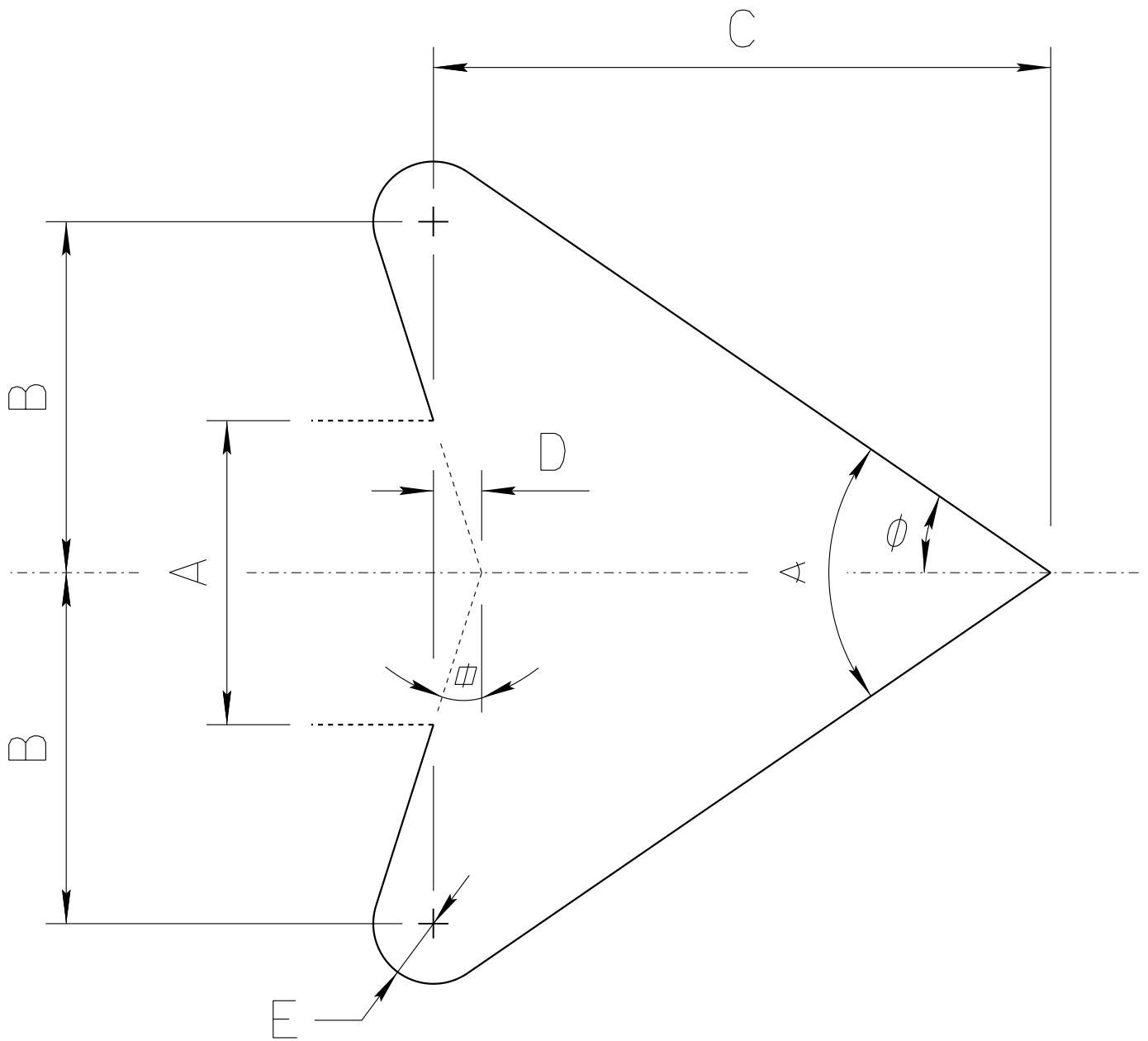
DATE:

DECEMBER / 2012

APPROVED:

SIGNATURE ON FILE

ADOT STANDARD ARROW HEAD DETAILS



A = Arrow Shaft Stroke Width

B = $1.15 \times A$

C = $2.025 \times A$

D = $0.16169 \times A$

E = $0.2 \times A$

ϕ = 17.92°

α = 34.519°

\angle = 69.038°

ARIZONA DEPARTMENT OF TRANSPORTATION
TRAFFIC ENGINEERING GROUP

DRAWN:

L. LOPEZ

DATE:

AUGUST/2019