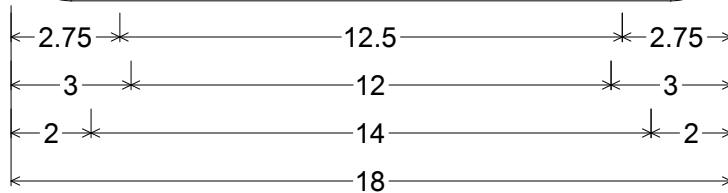


CODE: R4-7a

SIZE: 18" x 24"
MINIMUM



R04-07a(18x24-MIN)WHT;
1.500" Radius, 0.625" Border, 0.375" Indent, Black on White;
"KEEP" D;
Standard Arrow Custom 12.000" X 6.000" 0°;
"RIGHT" D specified length;

ALL DIMENSIONS ARE IN INCHES



COLORS:

LEGEND & BORDER - BLACK (NON-REFL)
BACKGROUND - WHITE (REFL)

ARIZONA DEPARTMENT OF TRANSPORTATION
TRAFFIC ENGINEERING GROUP

DRAWN:

L. LOPEZ

DATE:

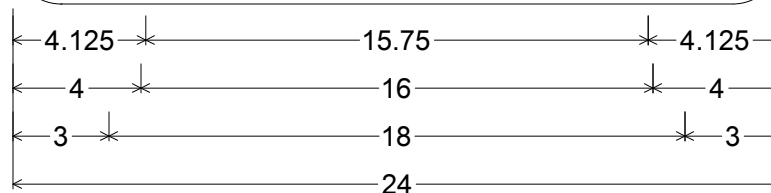
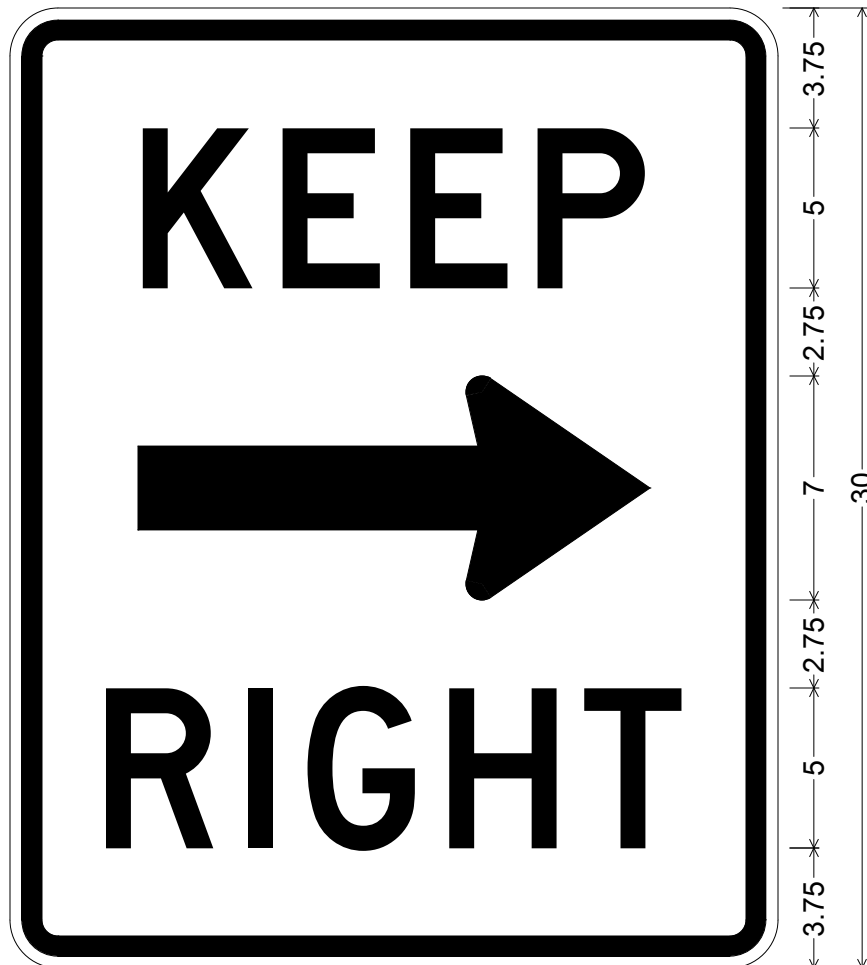
DECEMBER / 2012

APPROVED:

SIGNATURE ON FILE

CODE: R4-7a

SIZE: 24" x 30"
STANDARD



R04-07a(24x30-STD)WHT;
1.500" Radius, 0.625" Border, 0.375" Indent, Black on White;
"KEEP" D; Standard Arrow Custom 16.000" X 7.000" 0°;
"RIGHT" D specified length;

ALL DIMENSIONS ARE IN INCHES



COLORS:

LEGEND & BORDER - BLACK (NON-REFL)
BACKGROUND - WHITE (REFL)

ARIZONA DEPARTMENT OF TRANSPORTATION
TRAFFIC ENGINEERING GROUP

DRAWN:

L. LOPEZ

DATE:

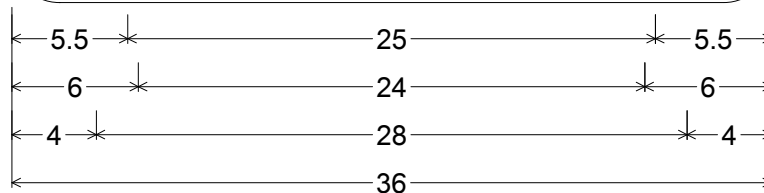
DECEMBER / 2012

APPROVED:

SIGNATURE ON FILE

CODE: R4-7a

SIZE: 36" x 48"
EXPRESSWAY



R04-07a(36x48-EXPWY)WHT;
 2.250" Radius, 0.875" Border, 0.625" Indent, Black on White;
 "KEEP" D specified length;
 Standard Arrow Custom 24.000" X 12.000" 0°;
 "RIGHT" D specified length;

ALL DIMENSIONS ARE IN INCHES



COLORS:

LEGEND & BORDER - BLACK (NON-REFL)
 BACKGROUND - WHITE (REFL)

ARIZONA DEPARTMENT OF TRANSPORTATION
 TRAFFIC ENGINEERING GROUP

DRAWN:

L. LOPEZ

DATE:

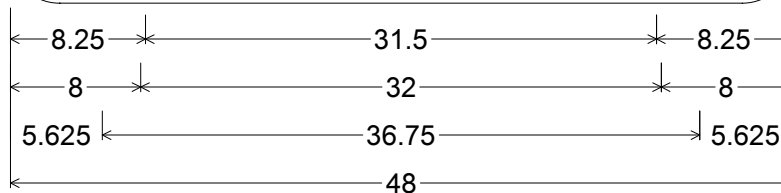
DECEMBER / 2012

APPROVED:

SIGNATURE ON FILE

CODE: R4-7a

SIZE: 48" x 60"
FREEWAY



R04-07a(48x60-FWY)WHT;
3.000" Radius, 1.250" Border, 0.750" Indent, Black on White;
"KEEP" D; Standard Arrow Custom 32.000" X 14.000" 0°;
"RIGHT" D;

ALL DIMENSIONS ARE IN INCHES



COLORS:

LEGEND & BORDER - BLACK (NON-REFL)
BACKGROUND - WHITE (REFL)

ARIZONA DEPARTMENT OF TRANSPORTATION
TRAFFIC ENGINEERING GROUP

DRAWN:

L. LOPEZ

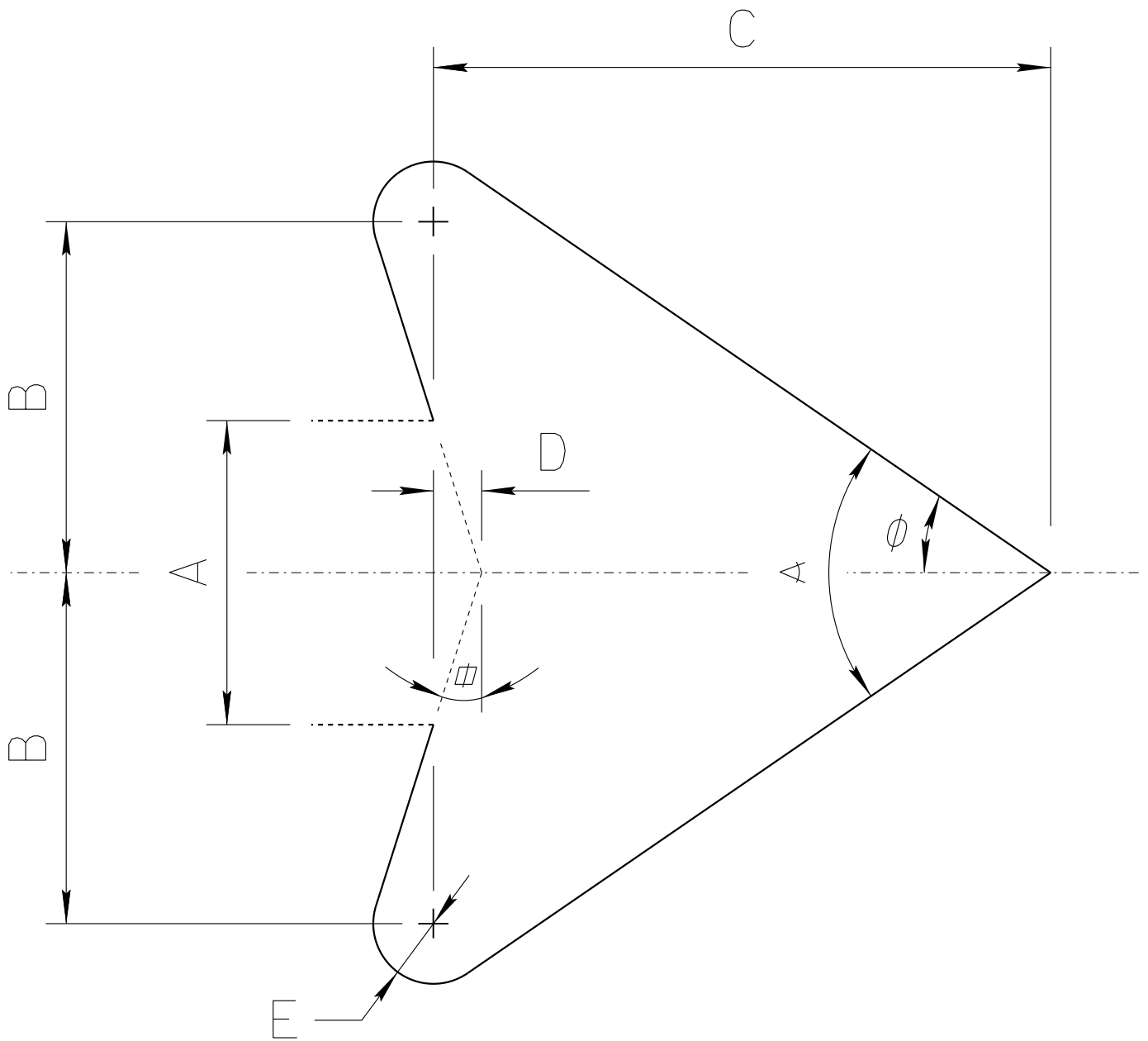
DATE:

DECEMBER / 2012

APPROVED:

SIGNATURE ON FILE

ADOT STANDARD ARROW HEAD DETAILS



$A =$ Arrow Shaft Stroke Width

$B = 1.15 \times A$

$C = 2.025 \times A$

$D = 0.16169 \times A$

$E = 0.2 \times A$

$\alpha = 17.92^\circ$

$\phi = 34.519^\circ$

$\angle = 69.038^\circ$

ARIZONA DEPARTMENT OF TRANSPORTATION
TRAFFIC ENGINEERING GROUP

DRAWN:

L. LOPEZ

DATE:

AUGUST/2019