



**R3-18**

**COMBINATION U-TURN & LEFT TURN PROHIBITION**

\*See standard arrow details

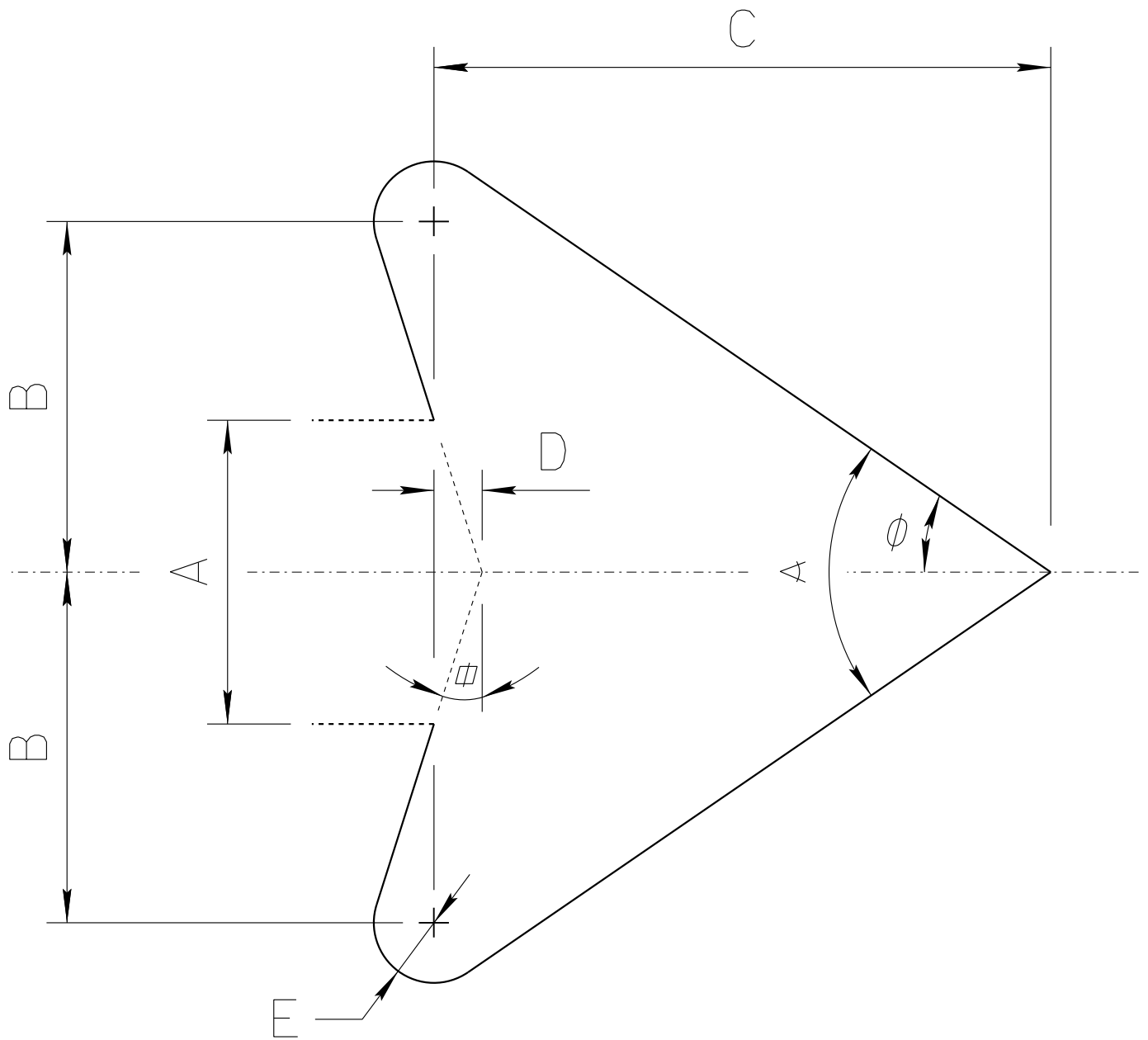
	A	B	C	D	E	F	G	H	J	K	L
<b>C</b>	24	.375	.625	10.407	8.566	2.081	3.682	1.841	6.805	.400	51.879
	30	.5	.75	13	10.728	2.601	4.603	2.281	8.526	.480	1.801
	36	.625	.875	15.611	12.889	3.122	5.524	2.722	10.247	.560	2.161
	48	.75	1.25	20.815	17.133	4.163	7.365	3.682	13.610	.800	2.882

	M	N	P	Q	R	S
	4.323	2.241	2.922	1.601	8.086	1.5
	5.404	2.802	3.642	2	10.087	1.875
	6.484	3.362	4.363	2.401	12.089	2.25
	8.646	4.483	5.844	3.202	16.172	3

**COLORS:** CIRCLE & DIAGONAL — RED (RETROREFLECTIVE)  
 SYMBOL & BORDER — BLACK  
 BACKGROUND — WHITE (RETROREFLECTIVE)

# ADOT STANDARD ARROW HEAD DETAILS



$A = \text{Arrow Shaft Stroke Width}$

$B = 1.15 \times A$

$C = 2.025 \times A$

$D = 0.16169 \times A$

$E = 0.2 \times A$

$\alpha = 17.92^\circ$

$\phi = 34.519^\circ$

$\alpha = 69.038^\circ$

ARIZONA DEPARTMENT OF TRANSPORTATION  
TRAFFIC ENGINEERING GROUP

DRAWN:

L. LOPEZ

DATE:

AUGUST/2019