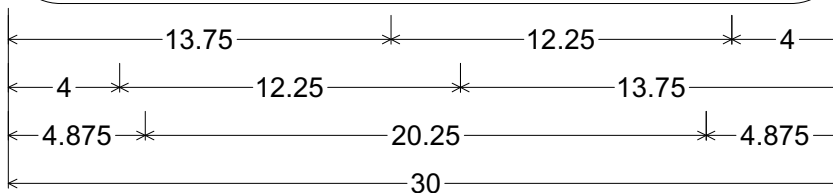
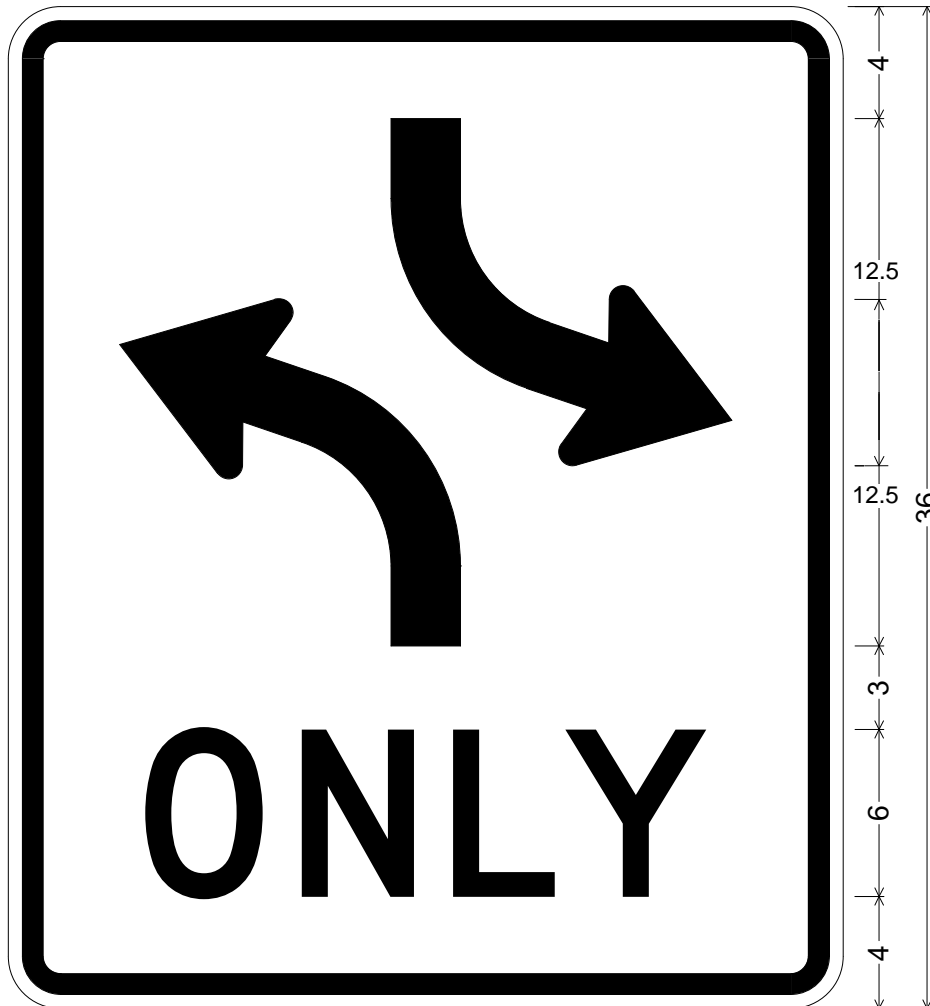


CODE: R3-9a

SIZE: 30" x 36"
STANDARD



R03-09a(30x36-STD)WHT;

1.875" Radius, 0.750" Border, 0.500" Indent, Black on White;

R3-9 - Arrow, 2.5" Stroke; R3-9 - Arrow, 2.5" Stroke;

"ONLY" D;

ALL DIMENSIONS ARE IN INCHES



COLORS:

ARROWS, LEGEND & BORDER - BLACK (NON-REFL)
BACKGROUND - WHITE (REFL)

ARIZONA DEPARTMENT OF TRANSPORTATION
TRAFFIC ENGINEERING GROUP

DRAWN:

L. LOPEZ

DATE:

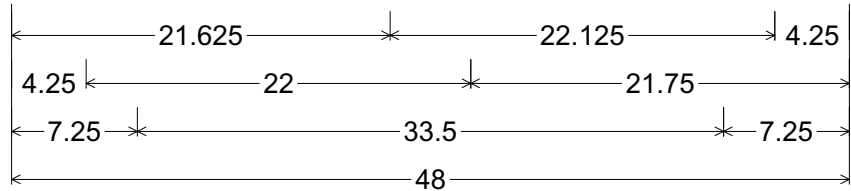
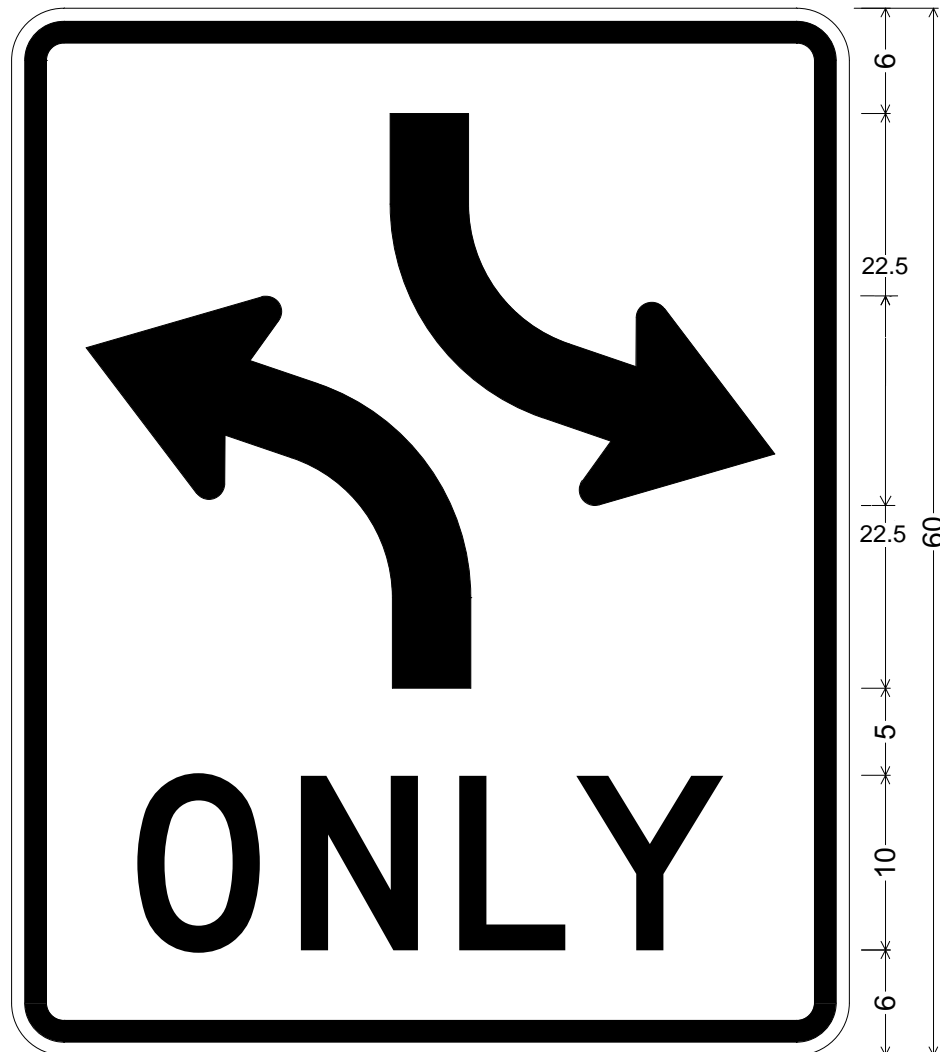
JULY / 2015

APPROVED:

SIGNATURE ON FILE


CODE: R3-9a

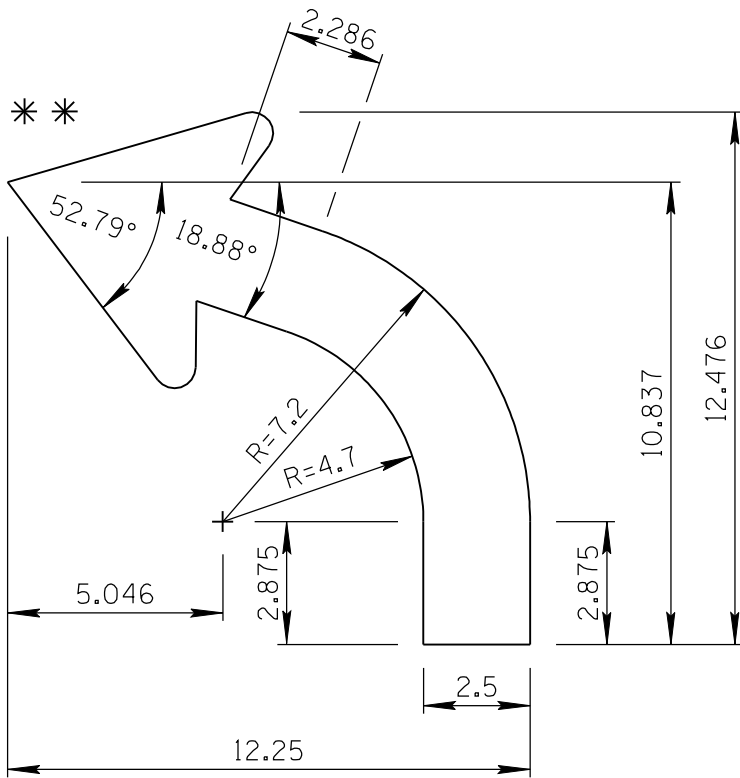
SIZE: 48" x 60"
SPECIAL



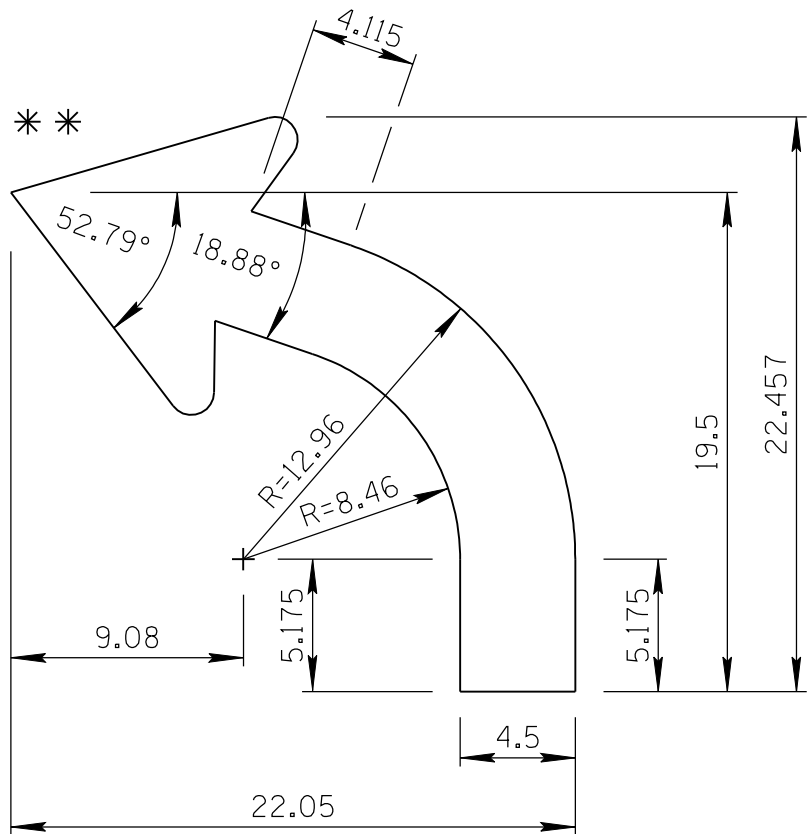
R03-09a(48x60-SPCL)WHT;
3.000" Radius, 1.250" Border, 0.750" Indent, Black on White;
R3-9 - Arrow, 4.5" Stroke; R3-9 - Arrow, 4.5" Stroke;
"ONLY" D;

ALL DIMENSIONS ARE IN INCHES

	COLORS: ARROWS, LEGEND & BORDER - BLACK (NON-REFL) BACKGROUND - WHITE (REFL)	ARIZONA DEPARTMENT OF TRANSPORTATION TRAFFIC ENGINEERING GROUP	
		DRAWN: L. LOPEZ	DATE: JULY / 2015
		APPROVED: SIGNATURE ON FILE	



2.5" Stroke



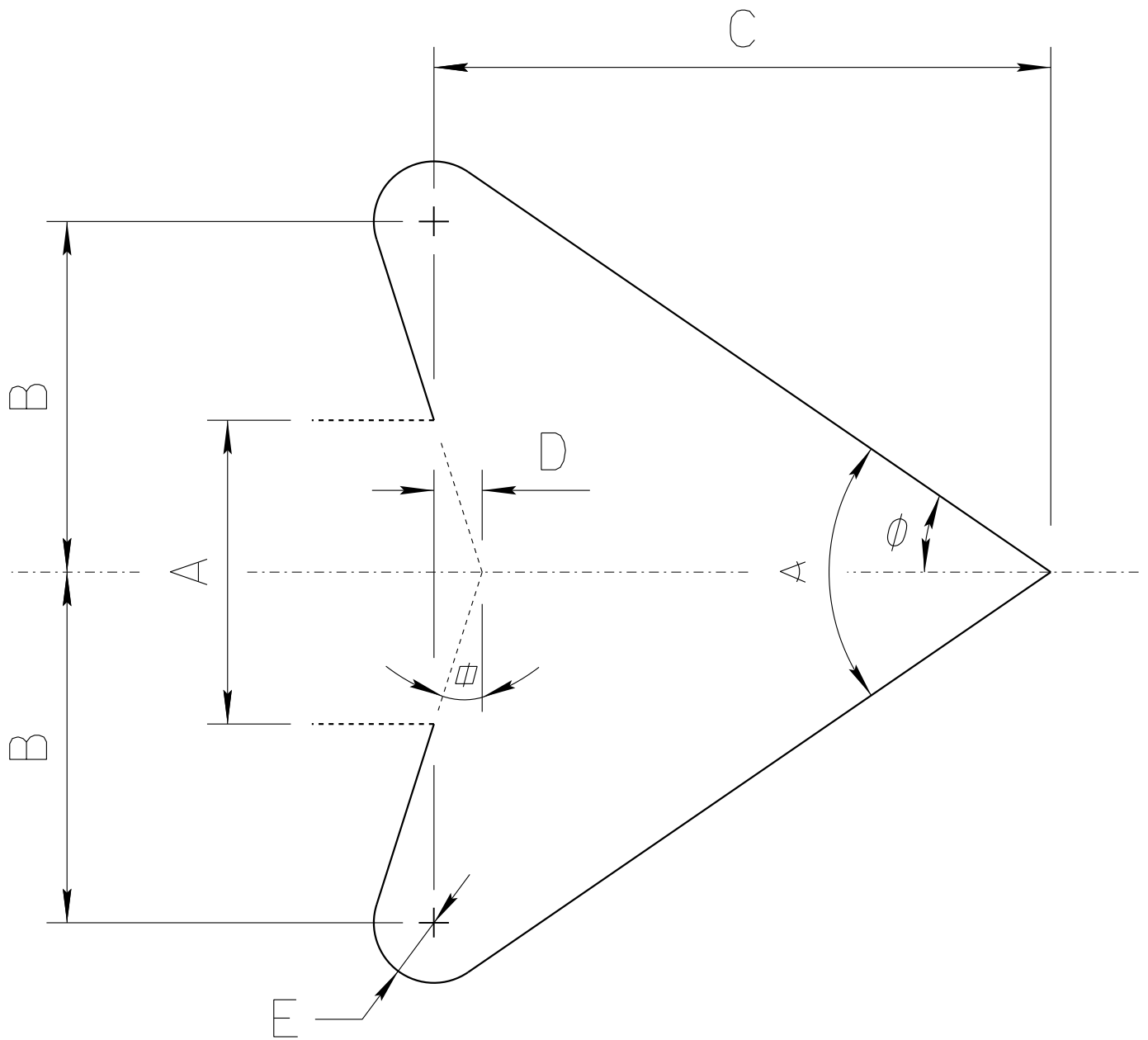
4.5" Stroke

** For arrowhead dimensions, see
 ADOT STANDARD ARROW HEAD DETAILS.

All dimensions are in inches. Length
 and width dimensions can be rounded
 to the nearest 1/8 inch.

ARIZONA DEPARTMENT OF TRANSPORTATION TRAFFIC ENGINEERING GROUP	
DRAWN: L. LOPEZ	DATE: JULY/2015

ADOT STANDARD ARROW HEAD DETAILS



$A = \text{Arrow Shaft Stroke Width}$

$B = 1.15 \times A$

$C = 2.025 \times A$

$D = 0.16169 \times A$

$E = 0.2 \times A$

$\phi = 17.92^\circ$

$\phi = 34.519^\circ$

$\alpha = 69.038^\circ$

ARIZONA DEPARTMENT OF TRANSPORTATION
TRAFFIC ENGINEERING GROUP

DRAWN:

L. LOPEZ

DATE:

AUGUST/2019