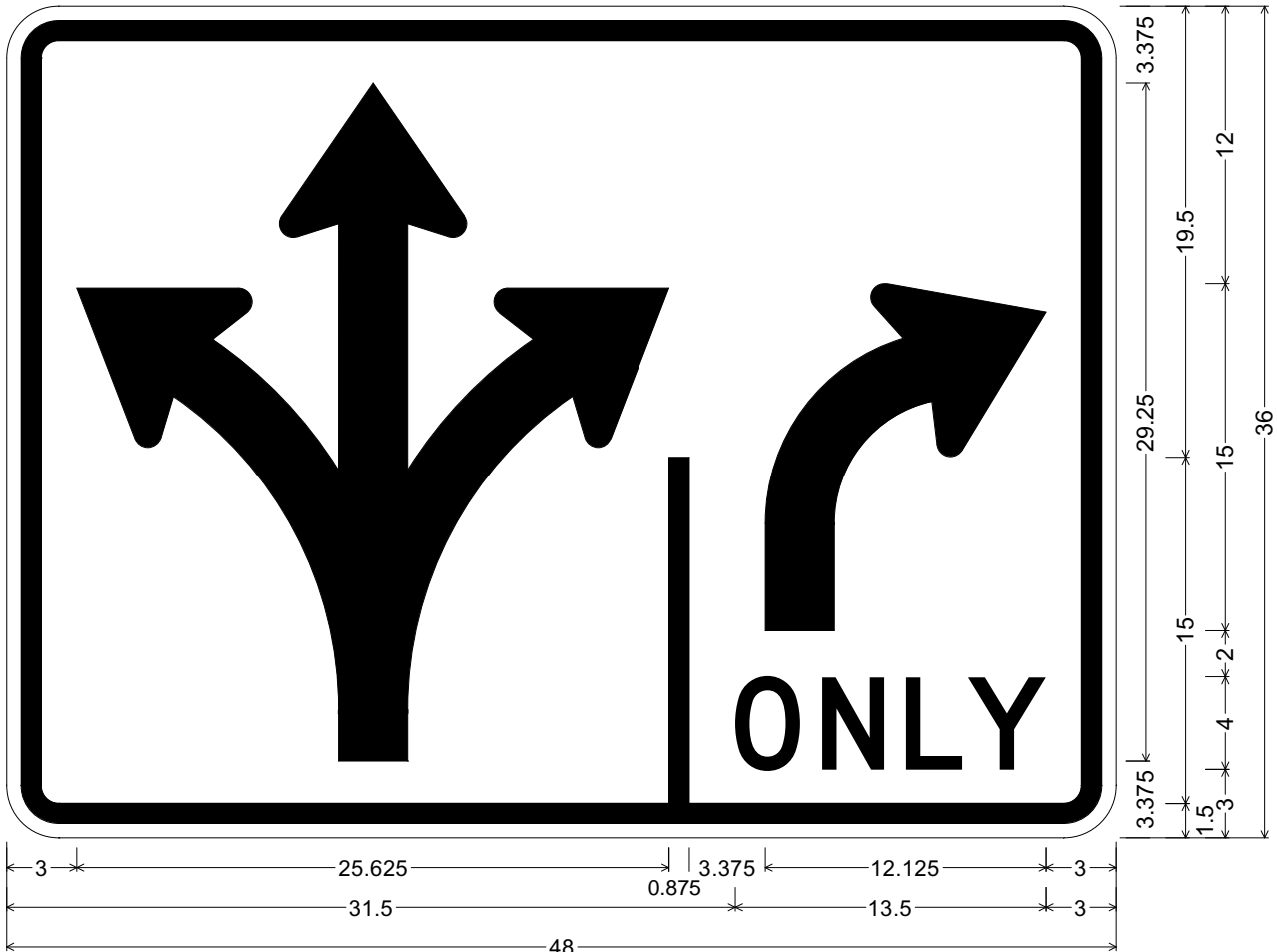


CODE: R3-8XR

SIZE: 48" x 36"  
STANDARD



R03-08XR(48x36-STD)WHT; 2.250" Radius, 0.875" Border, 0.625" Indent, Black on White;  
X2 - Arrow, 3" Stroke; Divider, 0.875" Stroke; L - Arrow, 3" Stroke; "ONLY" D;

ALL DIMENSIONS ARE IN INCHES



**COLORS:**

ARROWS, LEGEND & BORDER - BLACK (NON-REFL)  
BACKGROUND - WHITE (REFL)

ARIZONA DEPARTMENT OF TRANSPORTATION  
TRAFFIC ENGINEERING GROUP

DRAWN:

L. LOPEZ

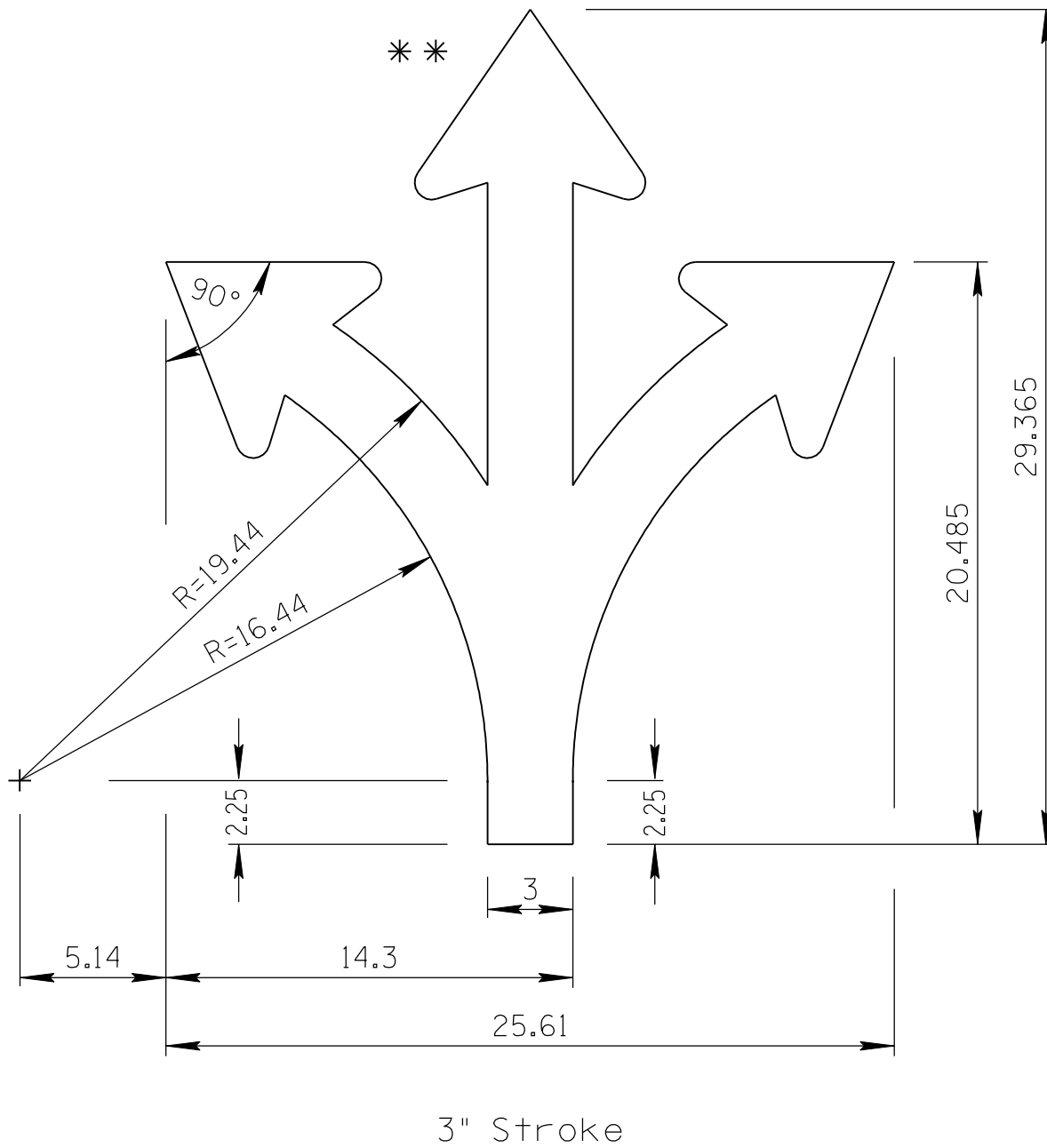
DATE:

JULY / 2015

APPROVED:

SIGNATURE ON FILE

ARROW CODE: X2  
3"  
Stroke



\*\* For arrowhead dimensions, see  
ADOT STANDARD ARROW HEAD DETAILS.

All dimensions are in inches. Length  
and width dimensions can be rounded  
to the nearest 1/8 inch.

ARIZONA DEPARTMENT OF TRANSPORTATION  
TRAFFIC ENGINEERING GROUP

DRAWN:

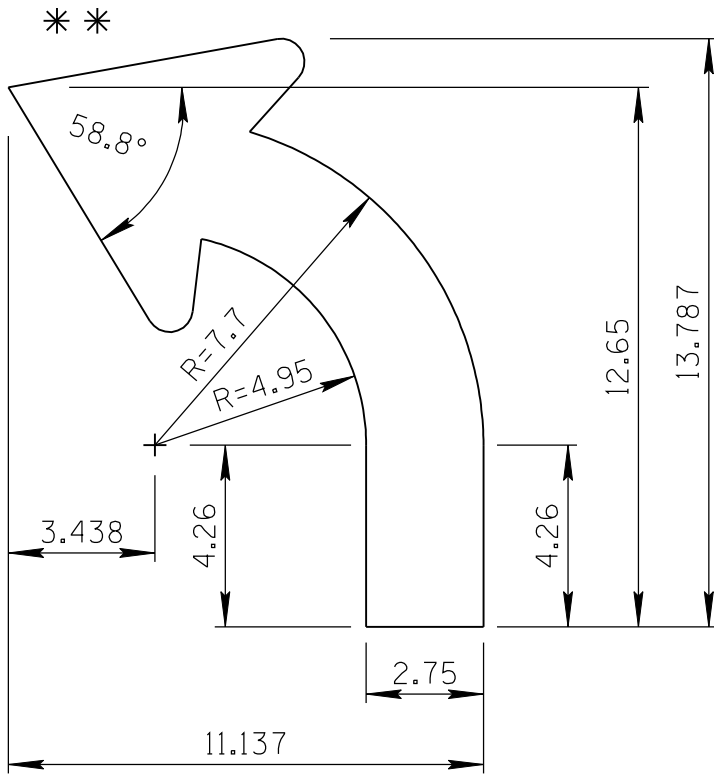
L. LOPEZ

DATE:

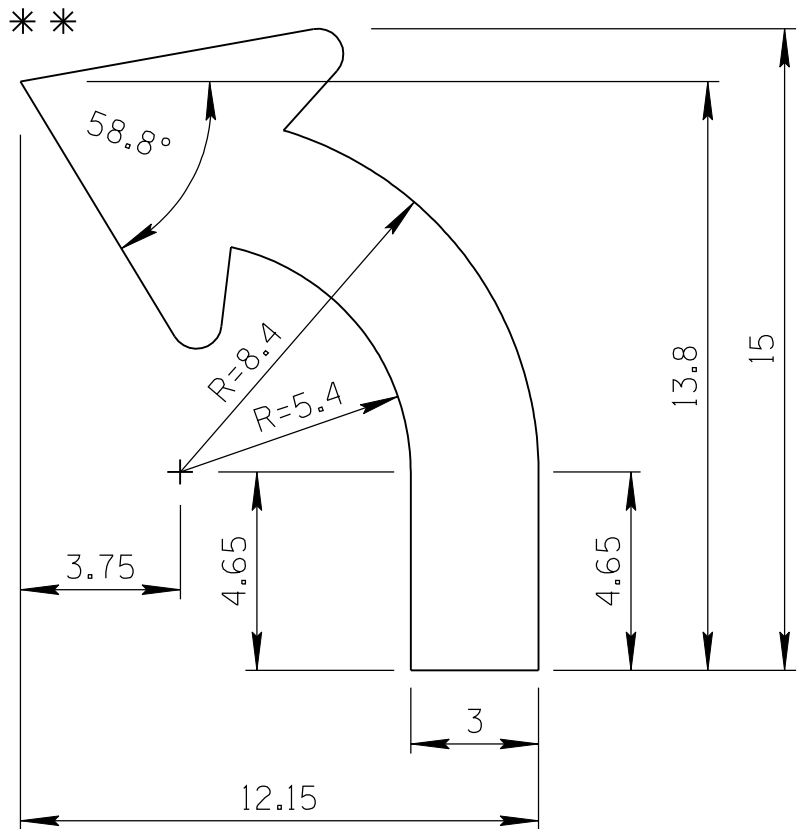
JULY/2015

ARROW CODE: L & R

Mirror for  
R Arrow  
2.75" & 3"  
Stroke



2.75" Stroke



3" Stroke

\*\* For arrowhead dimensions, see  
ADOT STANDARD ARROW HEAD DETAILS.

All dimensions are in inches. Length  
and width dimensions can be rounded  
to the nearest 1/8 inch.

ARIZONA DEPARTMENT OF TRANSPORTATION  
TRAFFIC ENGINEERING GROUP

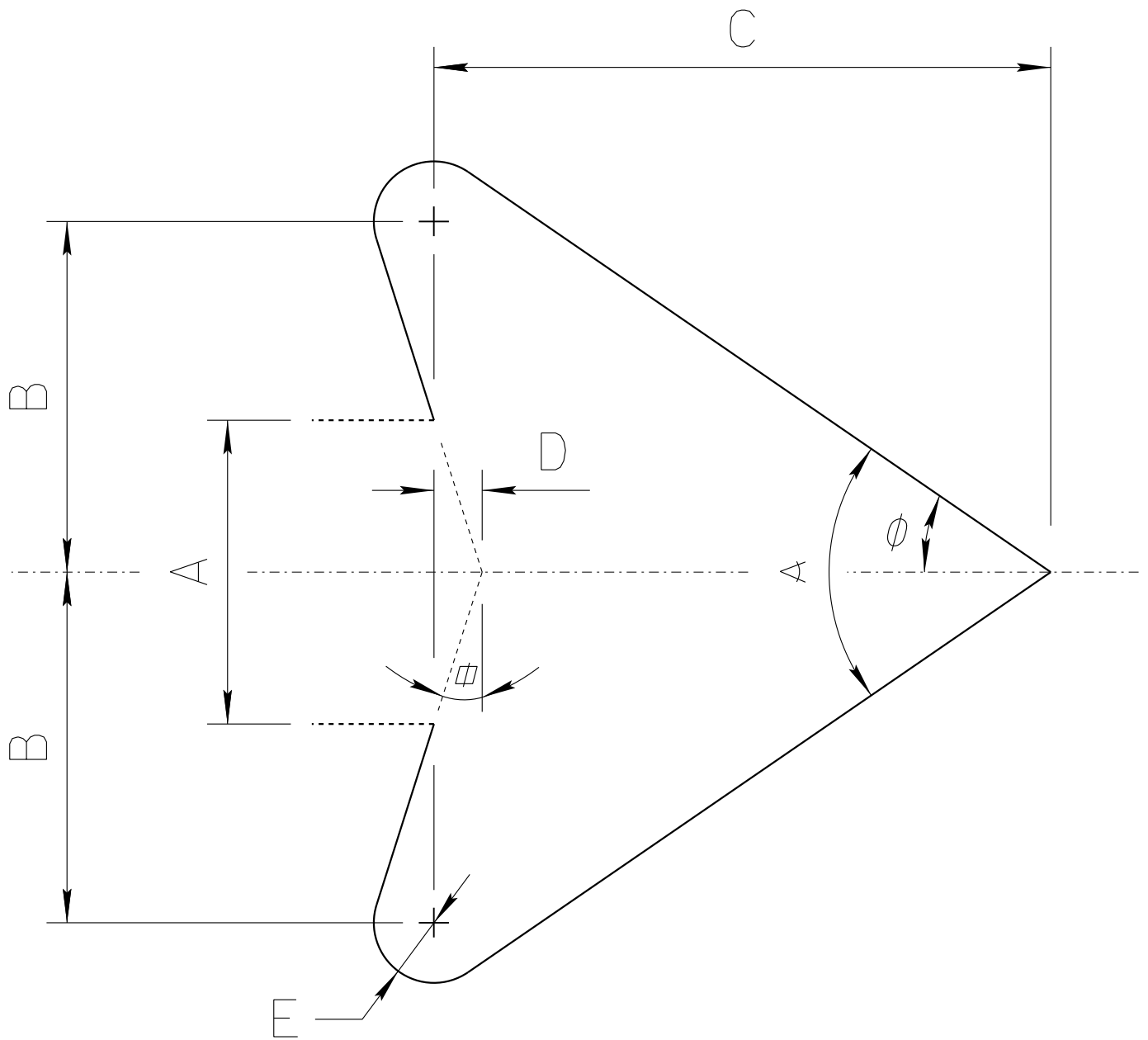
DRAWN:

L. LOPEZ

DATE:

JULY/2015

# ADOT STANDARD ARROW HEAD DETAILS



$A$  = Arrow Shaft Stroke Width

$B$  =  $1.15 \times A$

$C$  =  $2.025 \times A$

$D$  =  $0.16169 \times A$

$E$  =  $0.2 \times A$

$\phi$  =  $17.92^\circ$

$\alpha$  =  $34.519^\circ$

$\alpha$  =  $69.038^\circ$

ARIZONA DEPARTMENT OF TRANSPORTATION  
TRAFFIC ENGINEERING GROUP

DRAWN:

L. LOPEZ

DATE:

AUGUST/2019