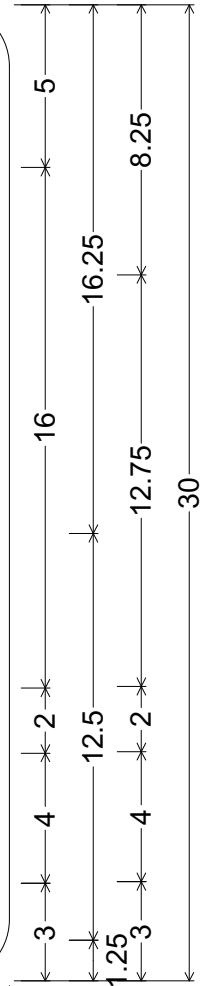
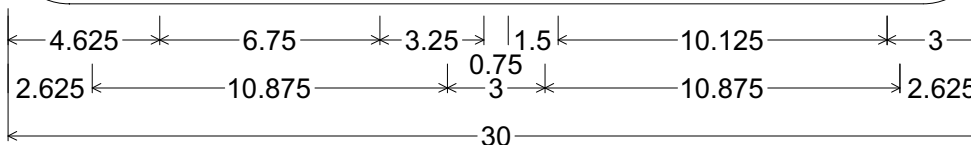
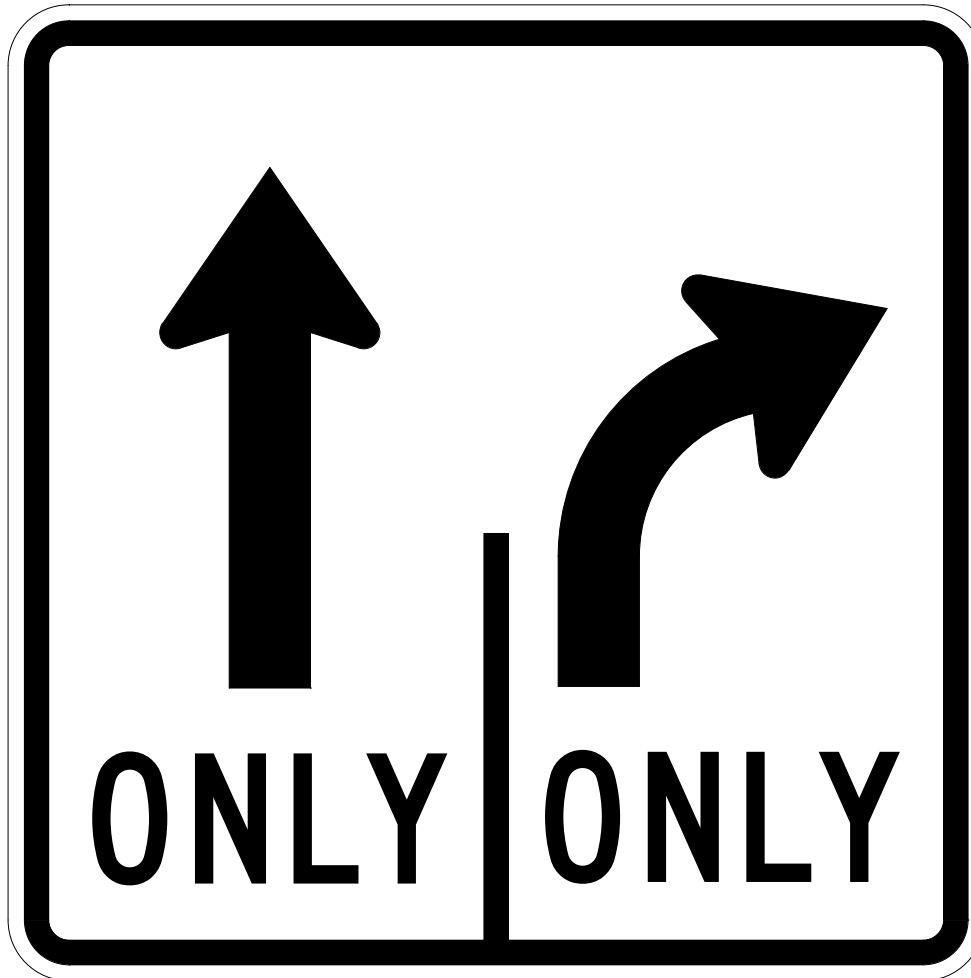


CODE: R3-8SR

SIZE: 30" x 30"  
STANDARD



R03-08SR(30x30-STD)WHT;

1.875" Radius, 0.750" Border, 0.500" Indent, Black on White;

S2 - Arrow, 2.5" Stroke; "ONLY" C; R - Arrow, 2.5" Stroke; "ONLY" C;

ALL DIMENSIONS ARE IN INCHES



**COLORS:**

ARROWS, LEGEND & BORDER - BLACK (NON-REFL)  
BACKGROUND - WHITE (REFL)

ARIZONA DEPARTMENT OF TRANSPORTATION  
TRAFFIC ENGINEERING GROUP

DRAWN:

L. LOPEZ

DATE:

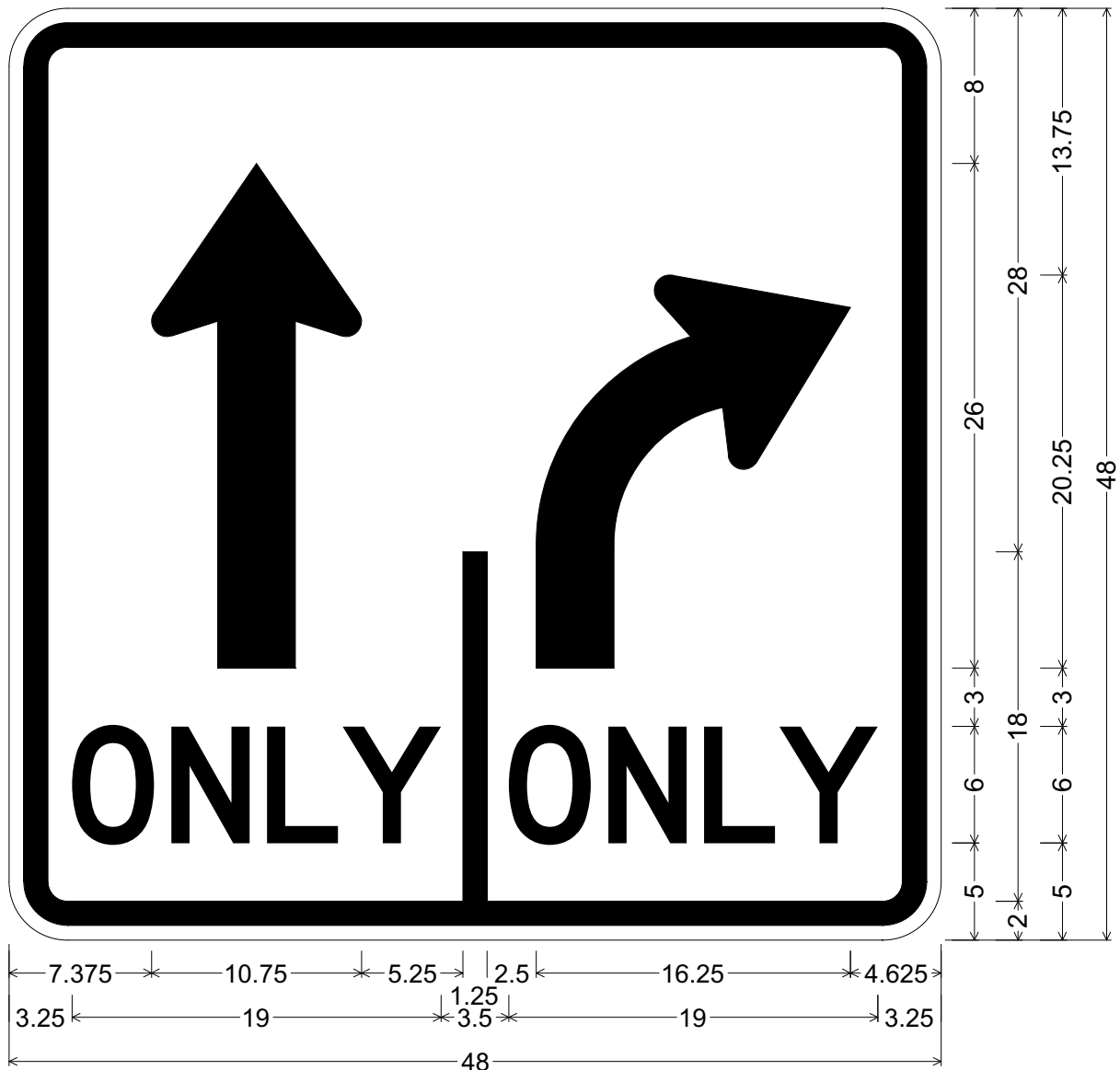
JULY / 2015

APPROVED:

SIGNATURE ON FILE

CODE: R3-8SR

SIZE: 48" x 48"  
SPECIAL




R03-08SR(48x48-SPCL)WHT;

3.000" Radius, 1.250" Border, 0.750" Indent, Black on White;

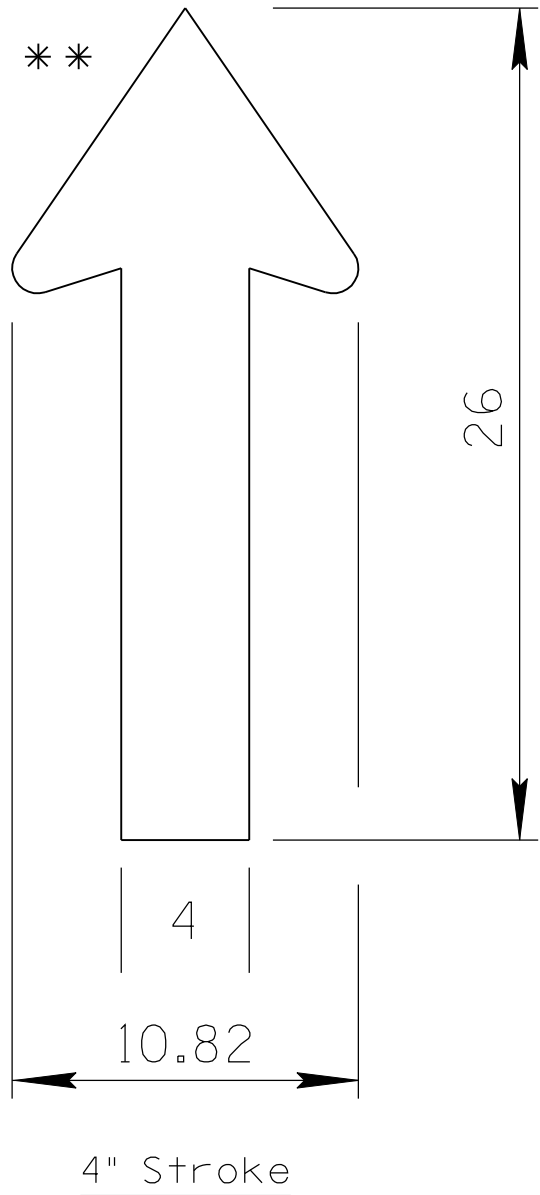
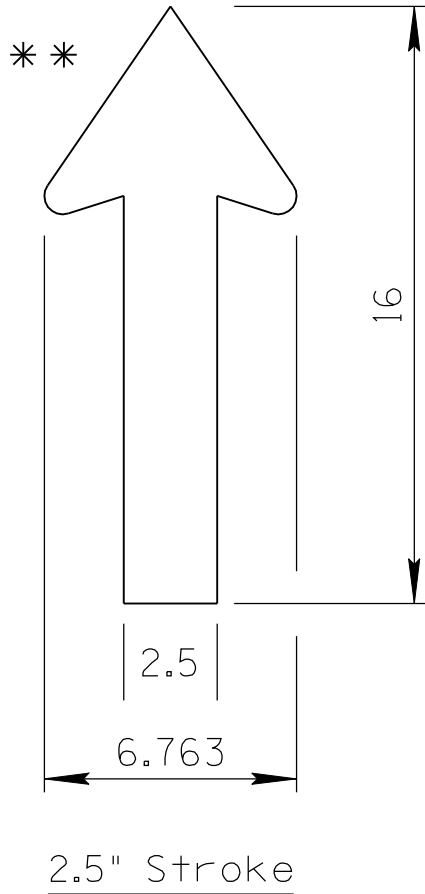
S2 - Arrow, 4" Stroke; "ONLY" D specified length; R - Arrow, 4" Stroke;

"ONLY" D specified length;

ALL DIMENSIONS ARE IN INCHES

	<b>COLORS:</b> ARROWS, LEGEND & BORDER - BLACK (NON-REFL) BACKGROUND - WHITE (REFL)	ARIZONA DEPARTMENT OF TRANSPORTATION TRAFFIC ENGINEERING GROUP	
		DRAWN: L. LOPEZ	DATE: JULY / 2015
		APPROVED: SIGNATURE ON FILE	

ARROW CODE: S2  
2.5" & 4"  
Stroke



\*\* For arrowhead dimensions, see  
ADOT STANDARD ARROW HEAD DETAILS.

All dimensions are in inches. Length  
and width dimensions can be rounded  
to the nearest 1/8 inch.

ARIZONA DEPARTMENT OF TRANSPORTATION  
TRAFFIC ENGINEERING GROUP

DRAWN:

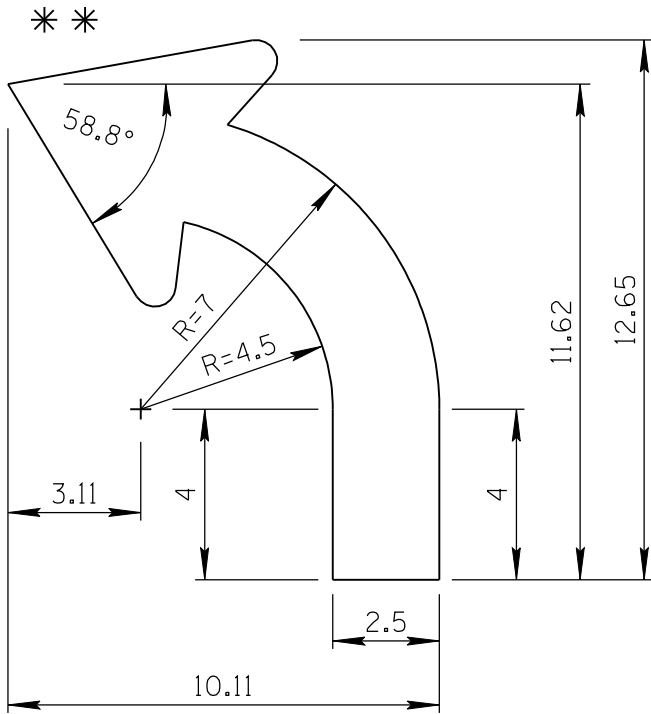
L. LOPEZ

DATE:

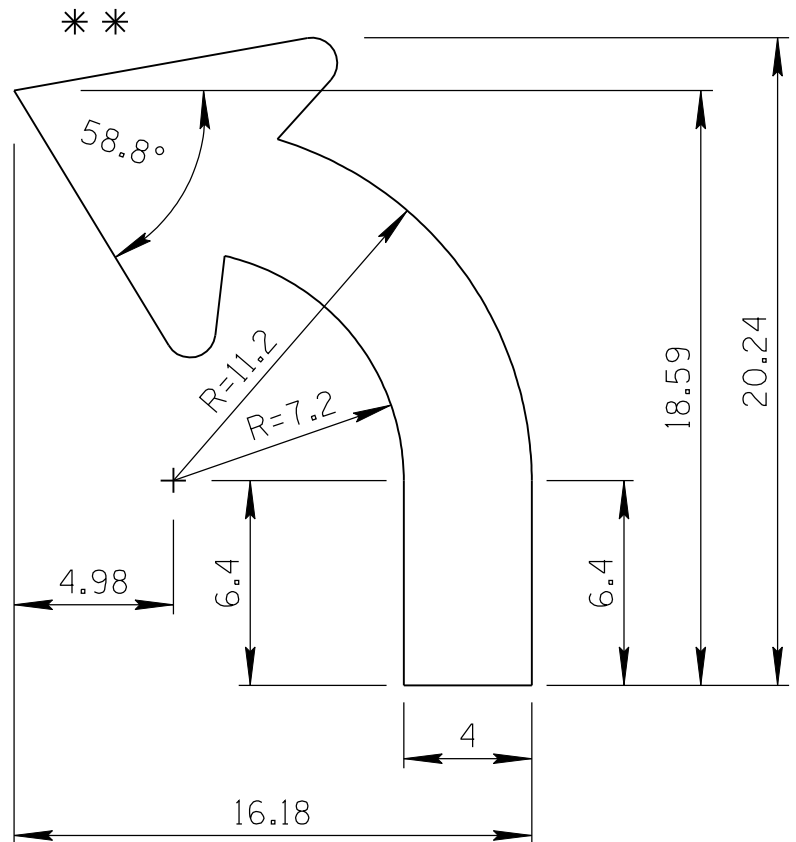
JULY/2015

ARROW CODE: L & R

Mirror for  
R Arrow  
2.5" & 4"  
Stroke



2.5" Stroke



4" Stroke

\*\* For arrowhead dimensions, see  
ADOT STANDARD ARROW HEAD DETAILS.

All dimensions are in inches. Length  
and width dimensions can be rounded  
to the nearest 1/8 inch.

ARIZONA DEPARTMENT OF TRANSPORTATION  
TRAFFIC ENGINEERING GROUP

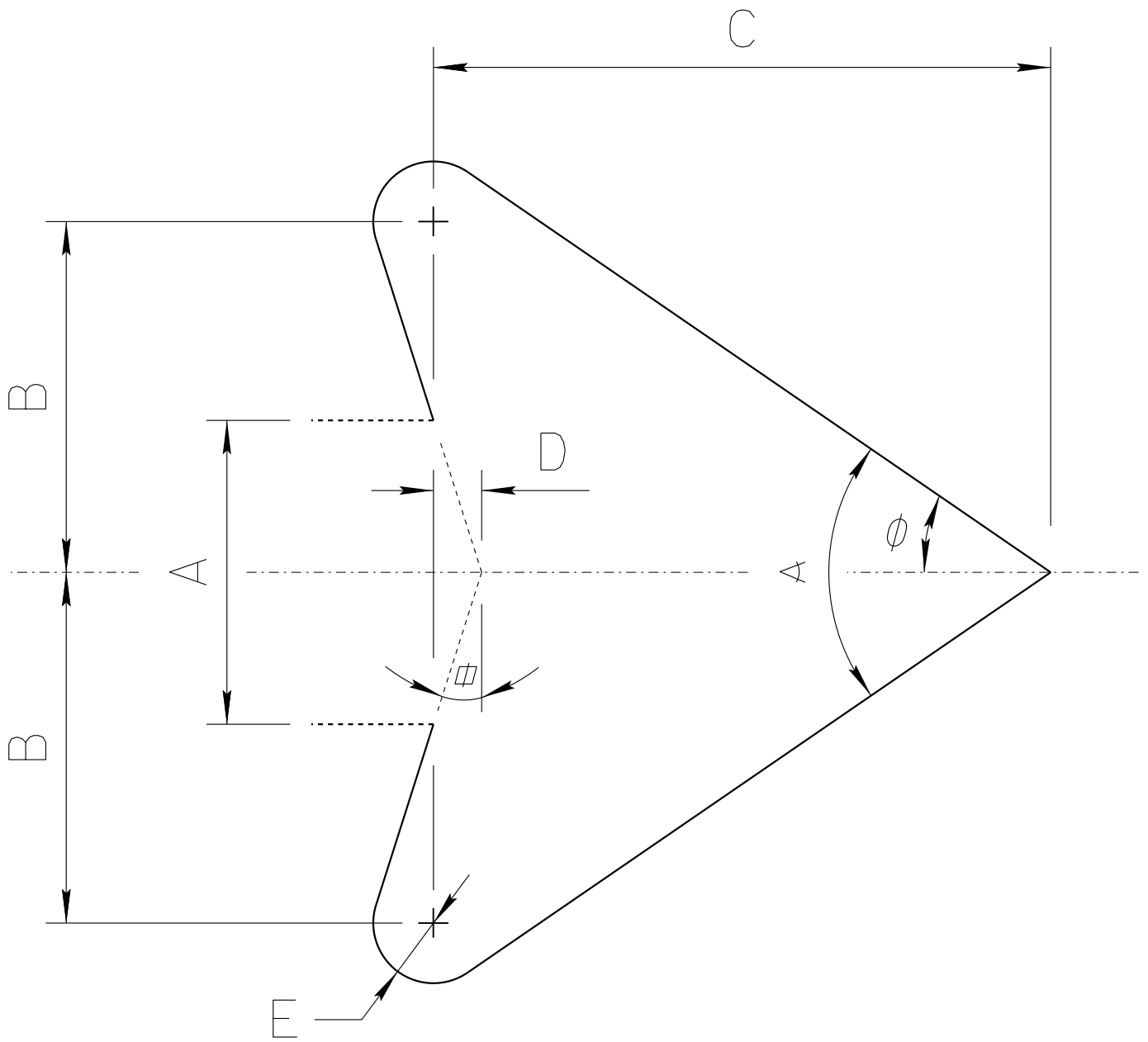
DRAWN:

L. LOPEZ

DATE:

JULY/2015

# ADOT STANDARD ARROW HEAD DETAILS



$A = \text{Arrow Shaft Stroke Width}$

$B = 1.15 \times A$

$C = 2.025 \times A$

$D = 0.16169 \times A$

$E = 0.2 \times A$

$\alpha = 17.92^\circ$

$\phi = 34.519^\circ$

$\alpha = 69.038^\circ$

ARIZONA DEPARTMENT OF TRANSPORTATION  
TRAFFIC ENGINEERING GROUP

DRAWN:

L. LOPEZ

DATE:

AUGUST/2019