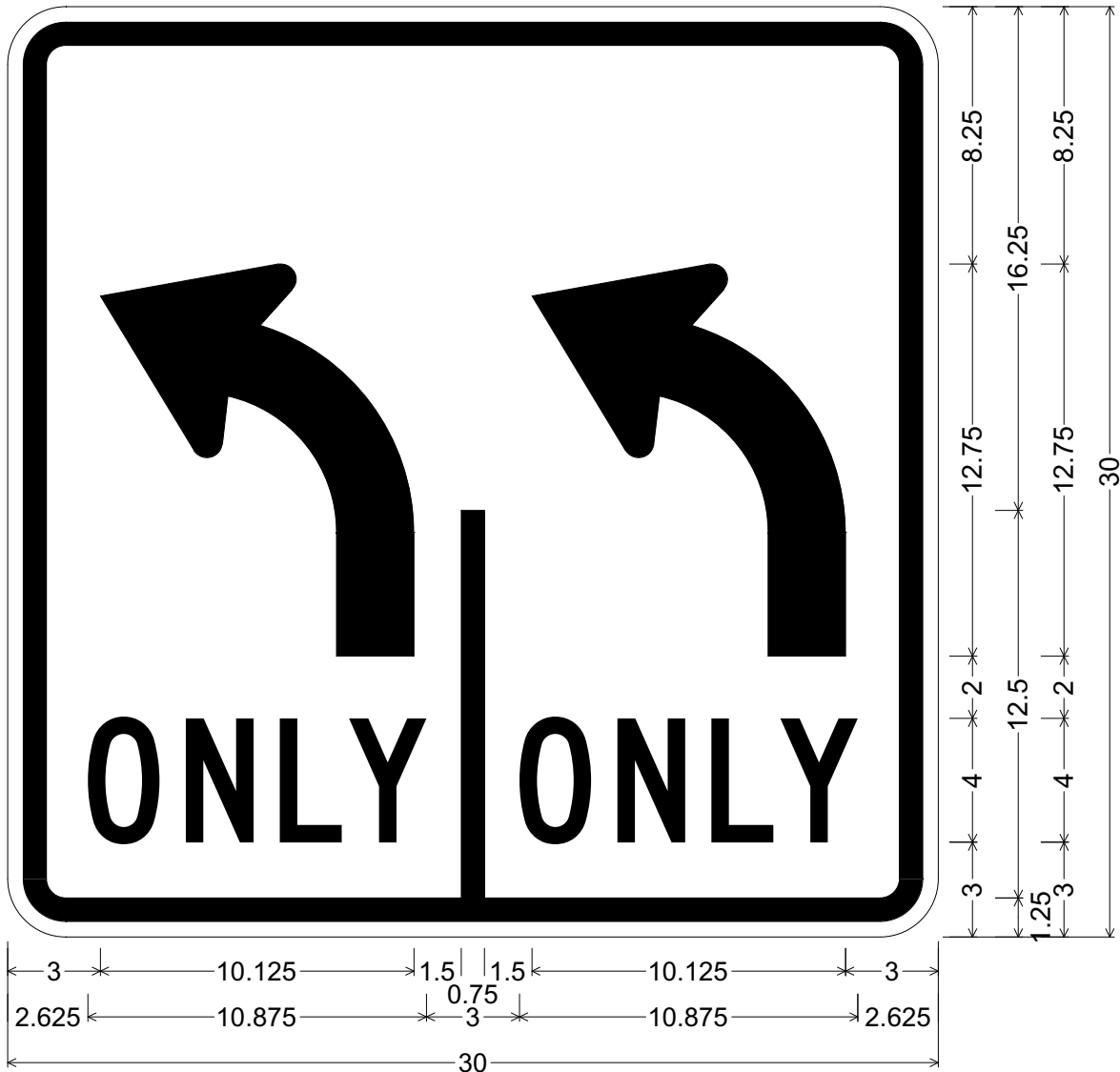


CODE: R3-8LL

SIZE: 30" x 30"
STANDARD



R03-08LL(30x30-STD)WHT;

1.875" Radius, 0.750" Border, 0.500" Indent, Black on White;

L - Arrow, 2.5" Stroke; "ONLY" C; L - Arrow, 2.5" Stroke; "ONLY" C;

ALL DIMENSIONS ARE IN INCHES



COLORS:

ARROWS, LEGEND & BORDER - BLACK (NON-REFL)
BACKGROUND - WHITE (REFL)

ARIZONA DEPARTMENT OF TRANSPORTATION
TRAFFIC ENGINEERING GROUP

DRAWN:

L. LOPEZ

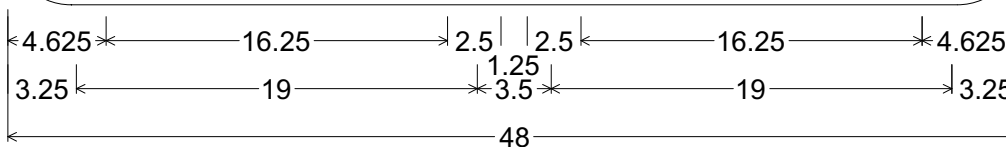
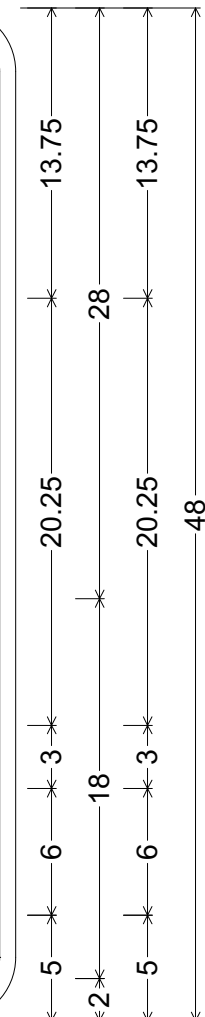
DATE:

JULY / 2015

APPROVED:


SIGNATURE ON FILE

CODE: R3-8LL
 SIZE: 48" x 48"
 SPECIAL



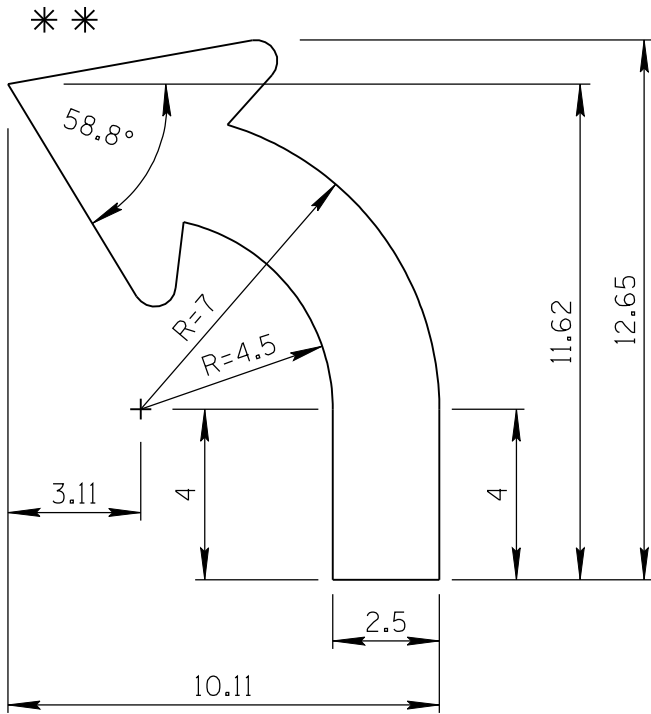
R03-08LL(48x48-SPCL)WHT;
 3.000" Radius, 1.250" Border, 0.750" Indent, Black on White;
 L - Arrow, 4" Stroke; "ONLY" D specified length; L - Arrow, 4" Stroke;
 "ONLY" D specified length;

ALL DIMENSIONS ARE IN INCHES

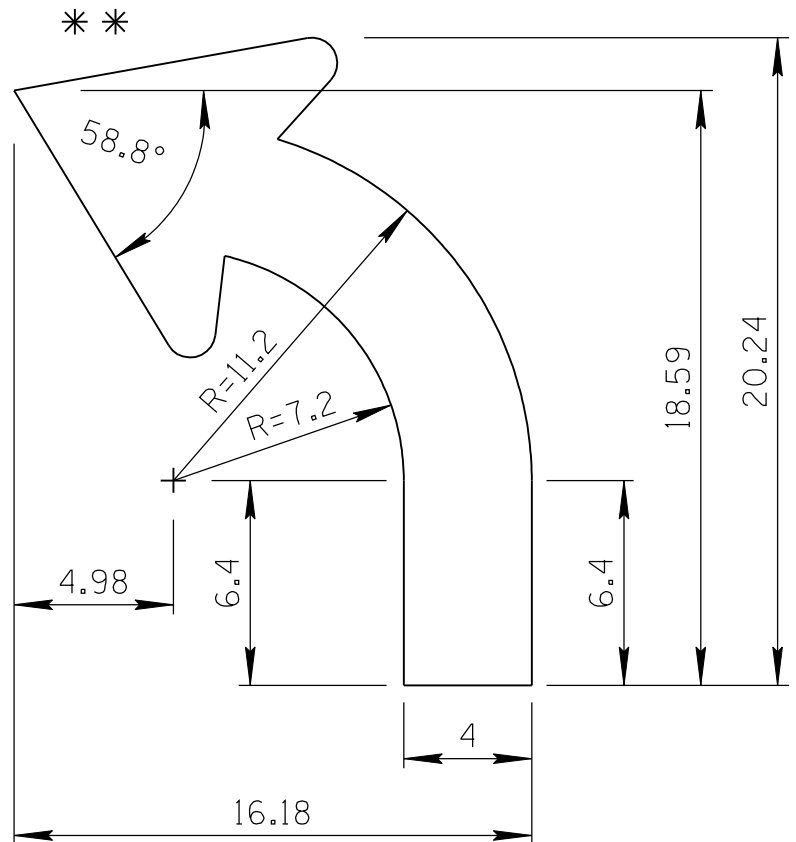
	<p>COLORS:</p> <p>ARROWS, LEGEND & BORDER - BLACK (NON-REFL) BACKGROUND - WHITE (REFL)</p>	<p>ARIZONA DEPARTMENT OF TRANSPORTATION TRAFFIC ENGINEERING GROUP</p>	
		<p>DRAWN: L. LOPEZ</p>	<p>DATE: JULY / 2015</p>
		<p>APPROVED: SIGNATURE ON FILE</p>	

ARROW CODE: L & R

Mirror for
R Arrow
2.5" & 4"
Stroke



2.5" Stroke



4" Stroke

** For arrowhead dimensions, see
ADOT STANDARD ARROW HEAD DETAILS.

All dimensions are in inches. Length
and width dimensions can be rounded
to the nearest 1/8 inch.

ARIZONA DEPARTMENT OF TRANSPORTATION
TRAFFIC ENGINEERING GROUP

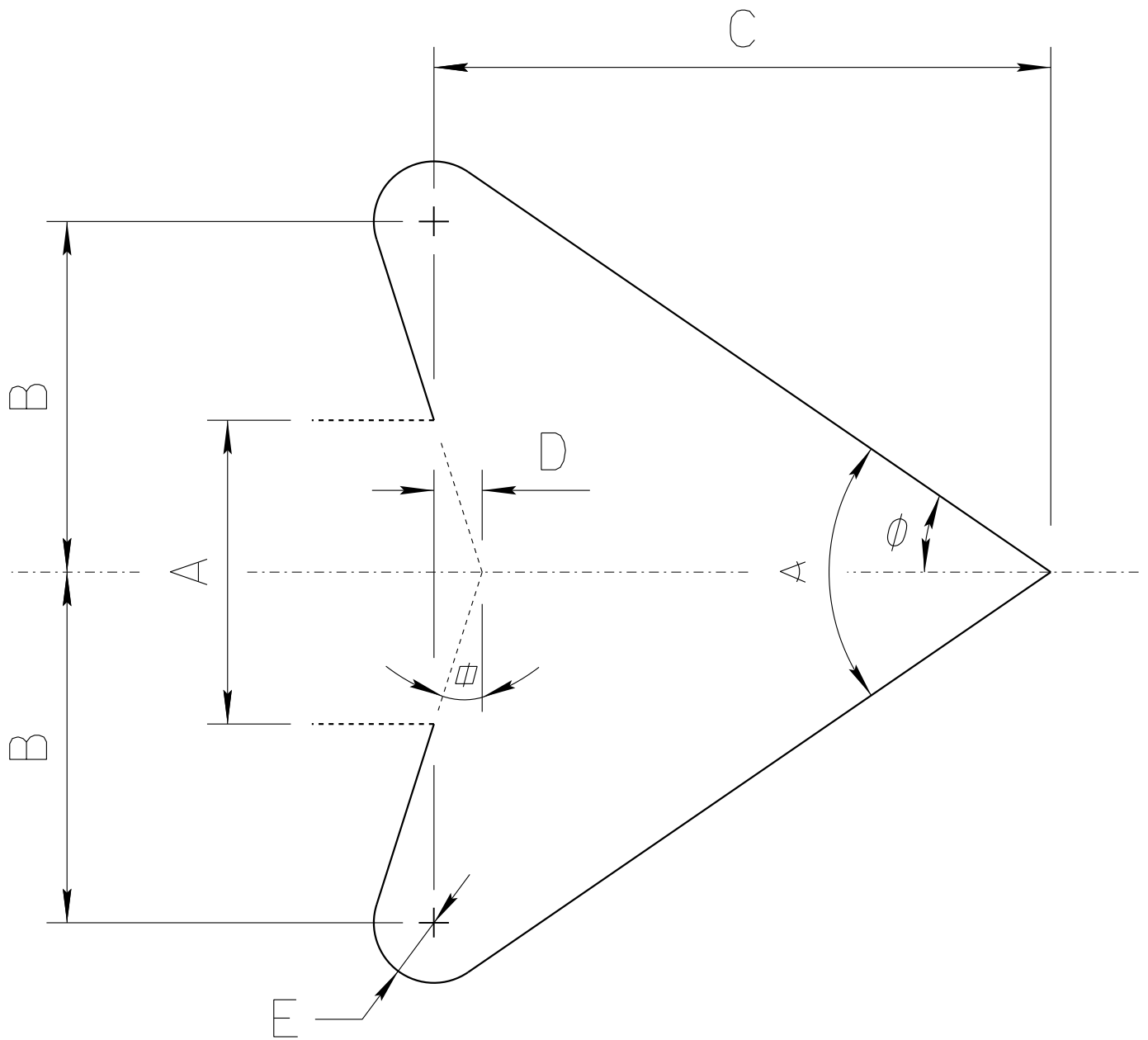
DRAWN:

L. LOPEZ

DATE:

JULY/2015

ADOT STANDARD ARROW HEAD DETAILS



$A =$ Arrow Shaft Stroke Width

$B = 1.15 \times A$

$C = 2.025 \times A$

$D = 0.16169 \times A$

$E = 0.2 \times A$

$\alpha = 17.92^\circ$

$\phi = 34.519^\circ$

$\angle = 69.038^\circ$

ARIZONA DEPARTMENT OF TRANSPORTATION
TRAFFIC ENGINEERING GROUP

DRAWN:

L. LOPEZ

DATE:

AUGUST/2019