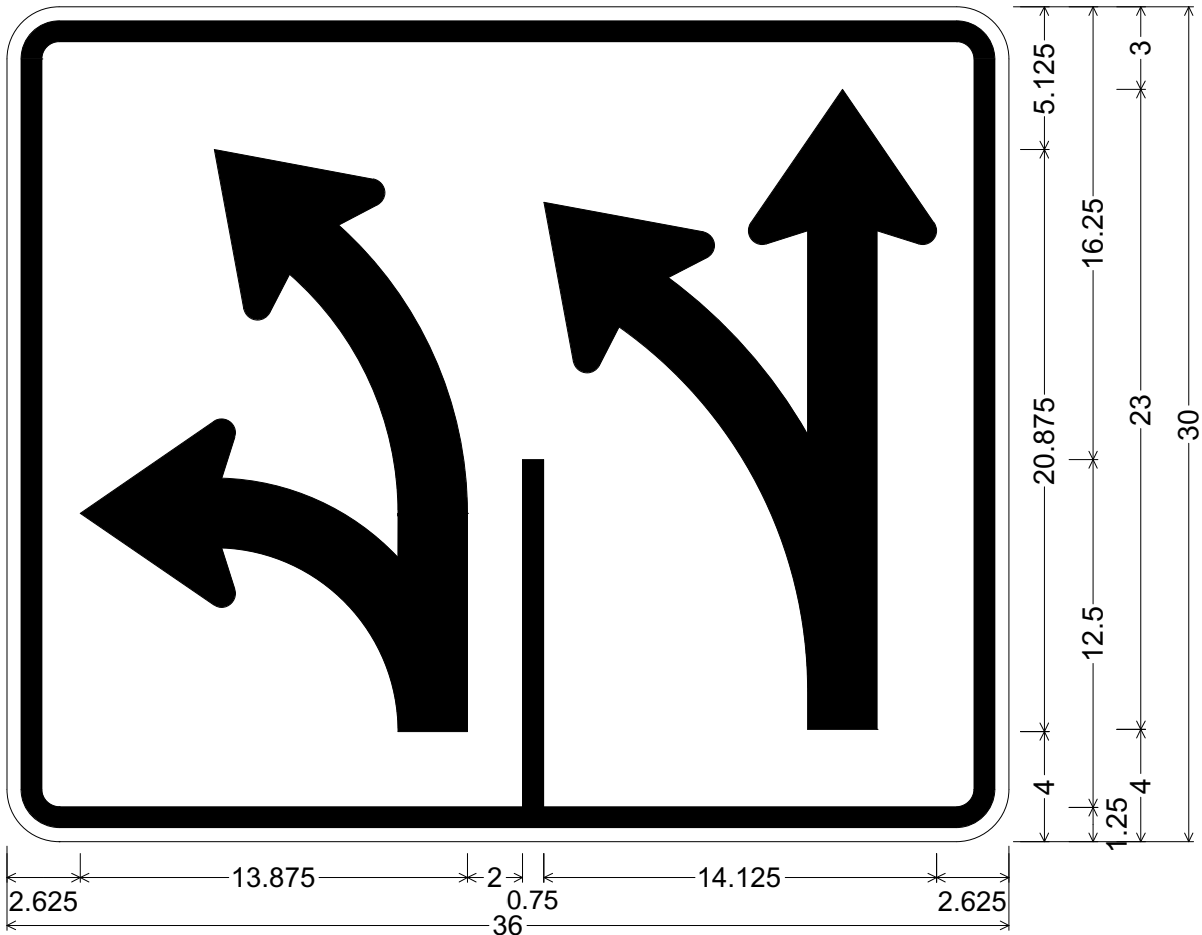


CODE: R3-8JK

SIZE: 36" x 30"  
STANDARD



R03-08JK(36x30-STD)WHT;

1.875" Radius, 0.750" Border, 0.500" Indent, Black on White;

J - Arrow, 2.5" Stroke; Divider, 0.75" Stroke; K3 - Arrow, 2.5" Stroke;

ALL DIMENSIONS ARE IN INCHES



**COLORS:**

ARROWS & BORDER - BLACK (NON-REFL)  
BACKGROUND - WHITE (REFL)

ARIZONA DEPARTMENT OF TRANSPORTATION  
TRAFFIC ENGINEERING GROUP

DRAWN:

L. LOPEZ

DATE:

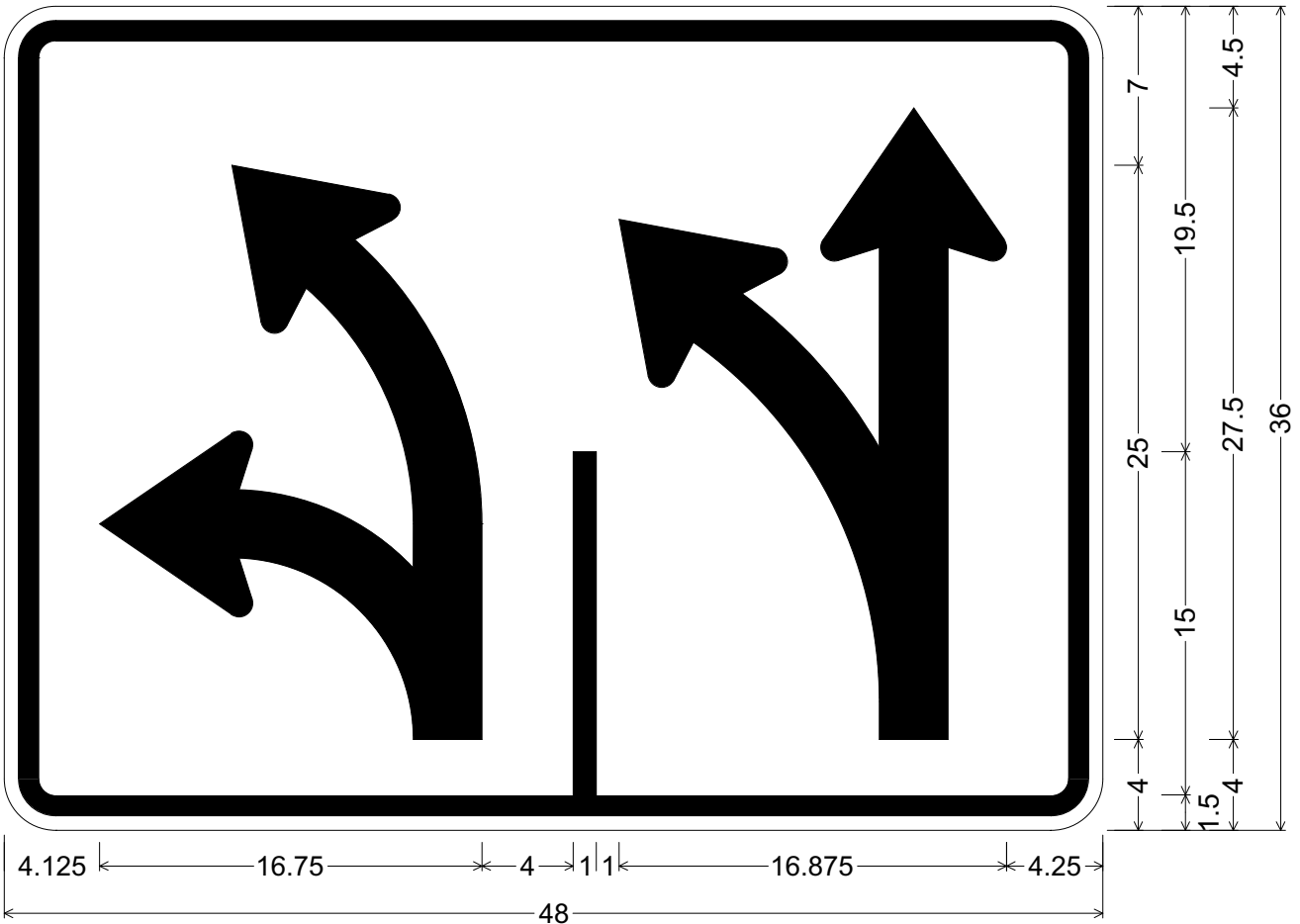
JULY/ 2015

APPROVED:

SIGNATURE ON FILE

CODE: R3-8JK

SIZE: 48" x 36"  
SPECIAL



R03-08JK(48x36-SPCL)WHT;

2.250" Radius, 0.875" Border, 0.625" Indent, Black on White;

J - Arrow, 3" Stroke; Divider, 1" Stroke; K3 - Arrow, 3" Stroke;

ALL DIMENSIONS ARE IN INCHES



**COLORS:**

ARROWS & BORDER - BLACK (NON-REFL)  
BACKGROUND - WHITE (REFL)

ARIZONA DEPARTMENT OF TRANSPORTATION  
TRAFFIC ENGINEERING GROUP

DRAWN:

L. LOPEZ

DATE:

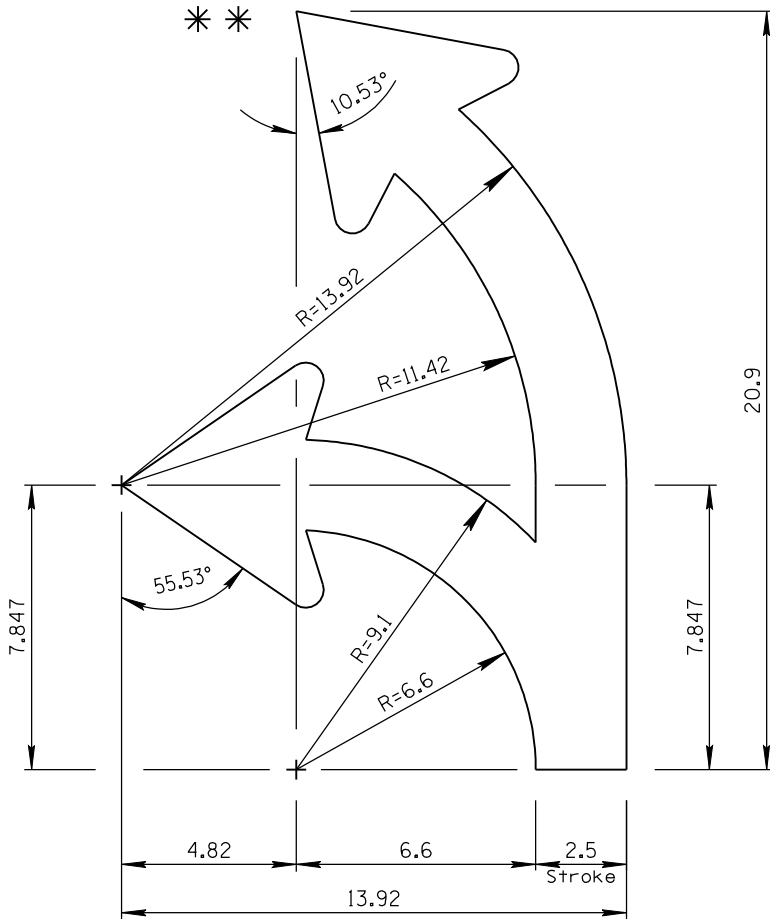
JULY / 2015

APPROVED:

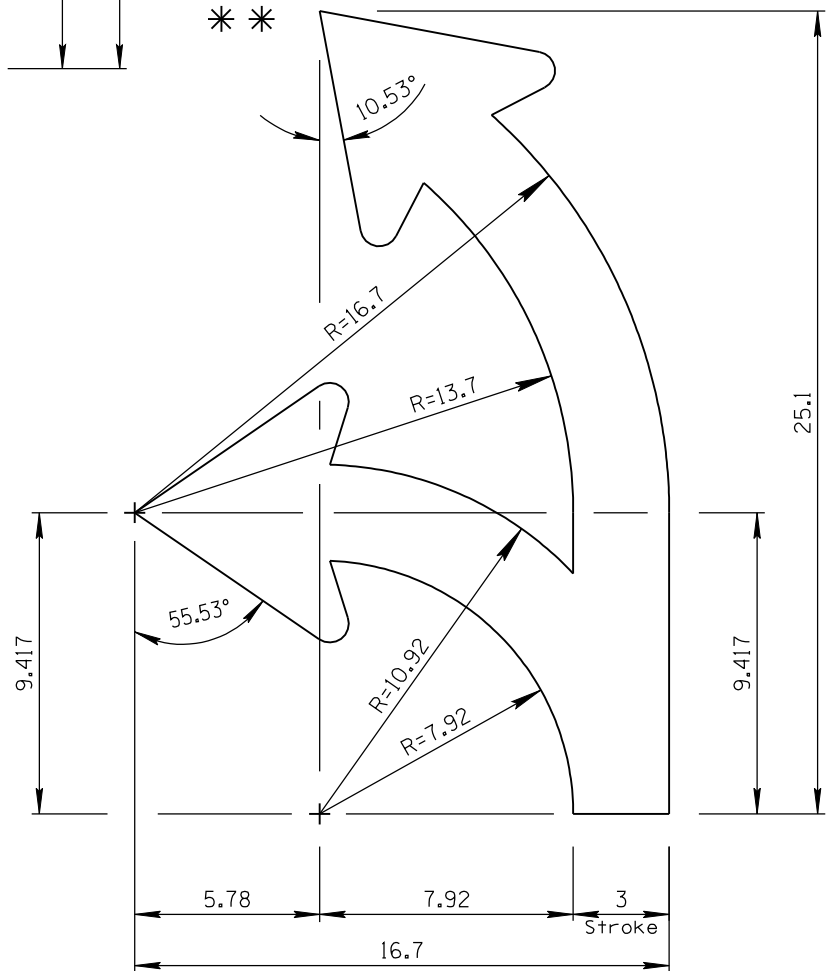
SIGNATURE ON FILE

ARROW CODE: J & P

Mirror for  
P Arrow  
2.5" & 3"  
Stroke



2.5" Stroke



3" Stroke

\*\* For arrowhead dimensions, see  
ADOT STANDARD ARROW HEAD DETAILS.

All dimensions are in inches. Length  
and width dimensions can be rounded  
to the nearest 1/8 inch.

ARIZONA DEPARTMENT OF TRANSPORTATION  
TRAFFIC ENGINEERING GROUP

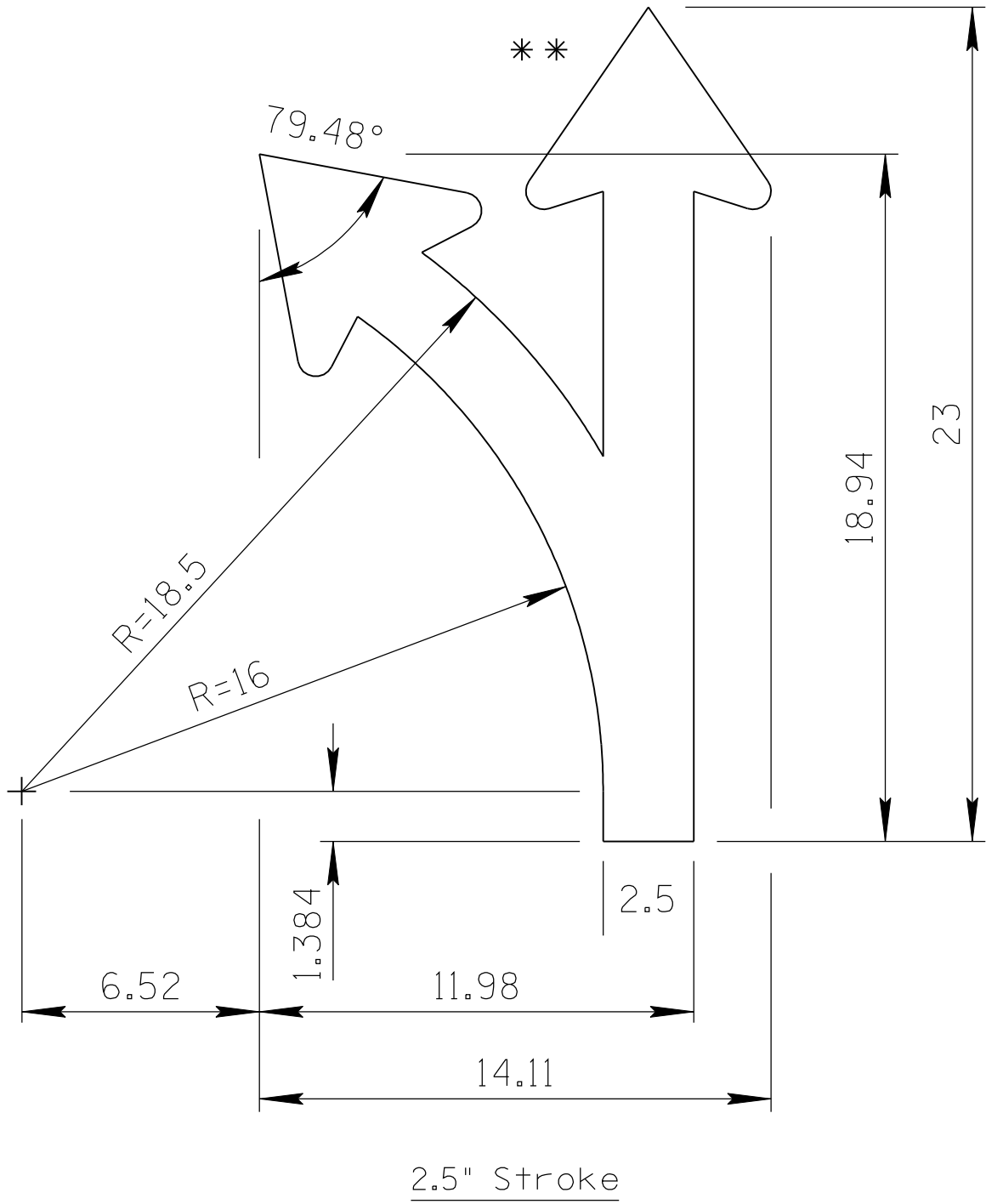
DRAWN:

L. LOPEZ

DATE:

JULY/2015

ARROW CODE: K3 & Q3  
 Mirror for  
 Q3 Arrow  
 2.5"  
 Stroke

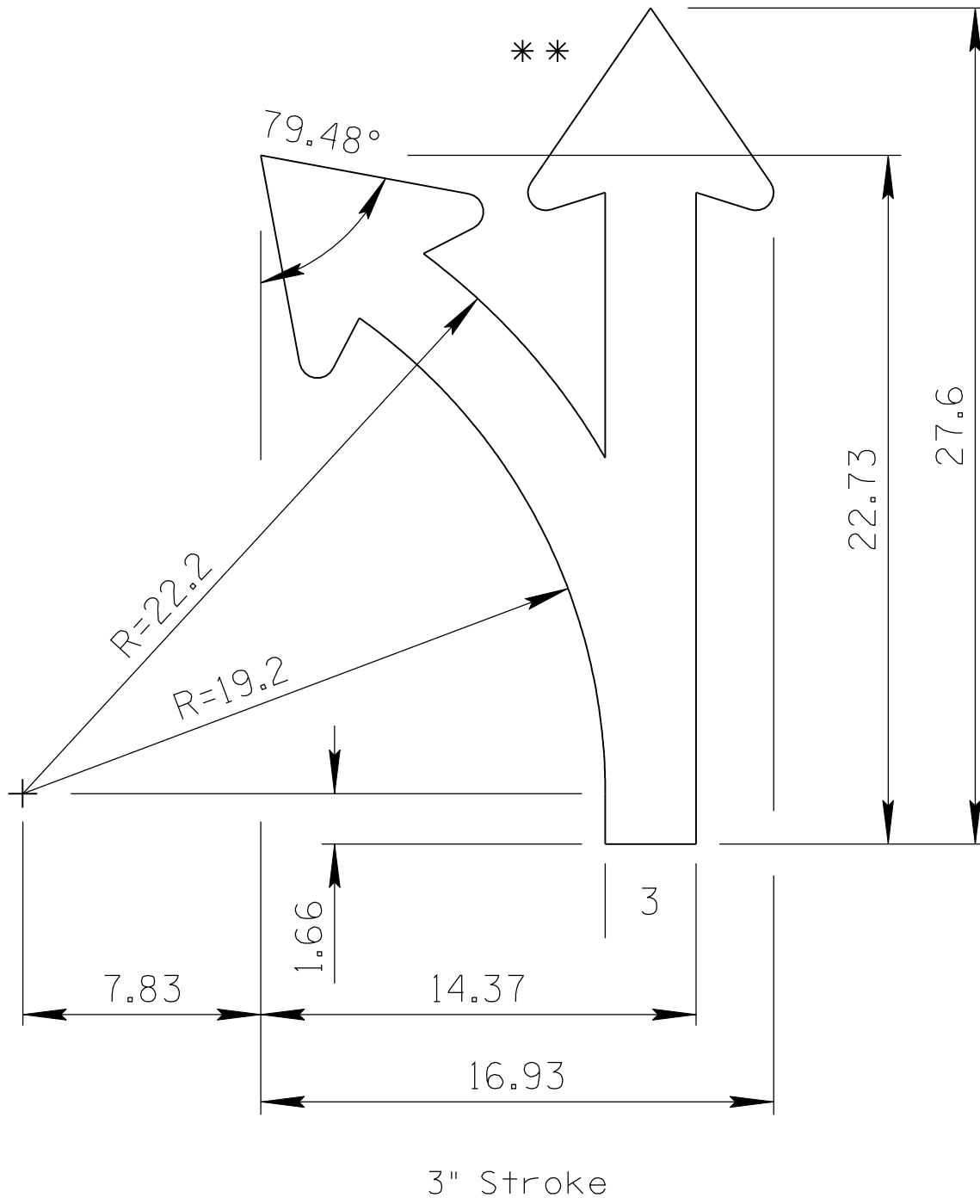


\*\* For arrowhead dimensions, see  
 ADOT STANDARD ARROW HEAD DETAILS.

All dimensions are in inches. Length  
 and width dimensions can be rounded  
 to the nearest 1/8 inch.

ARIZONA DEPARTMENT OF TRANSPORTATION TRAFFIC ENGINEERING GROUP	
DRAWN: L. LOPEZ	DATE: JULY/2015

ARROW CODE: K3 & Q3  
 Mirror for  
 Q3 Arrow  
 3"  
 Stroke

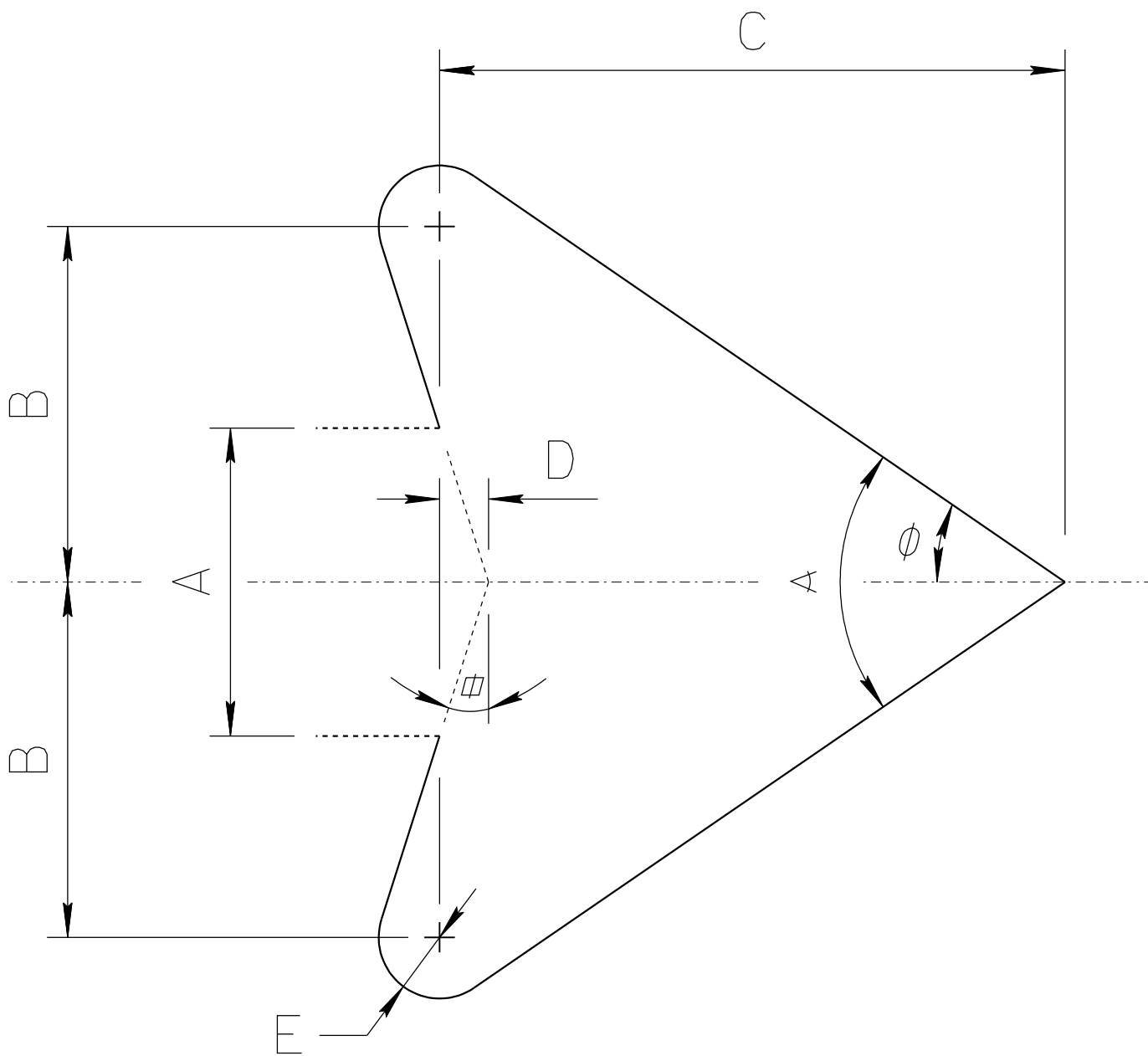


\*\* For arrowhead dimensions, see  
 ADOT STANDARD ARROW HEAD DETAILS.

All dimensions are in inches. Length  
 and width dimensions can be rounded  
 to the nearest 1/8 inch.

ARIZONA DEPARTMENT OF TRANSPORTATION TRAFFIC ENGINEERING GROUP	
DRAWN: L. LOPEZ	DATE: JULY/2015

# ADOT STANDARD ARROW HEAD DETAILS



$A =$  Arrow Shaft Stroke Width

$B = 1.15 \times A$

$C = 2.025 \times A$

$D = 0.16169 \times A$

$E = 0.2 \times A$

$\alpha = 17.92^\circ$

$\phi = 34.519^\circ$

$\alpha = 68.038^\circ$

ARIZONA DEPARTMENT OF TRANSPORTATION  
TRAFFIC ENGINEERING GROUP

DRAWN:

L. LOPEZ

DATE:

JULY/2015