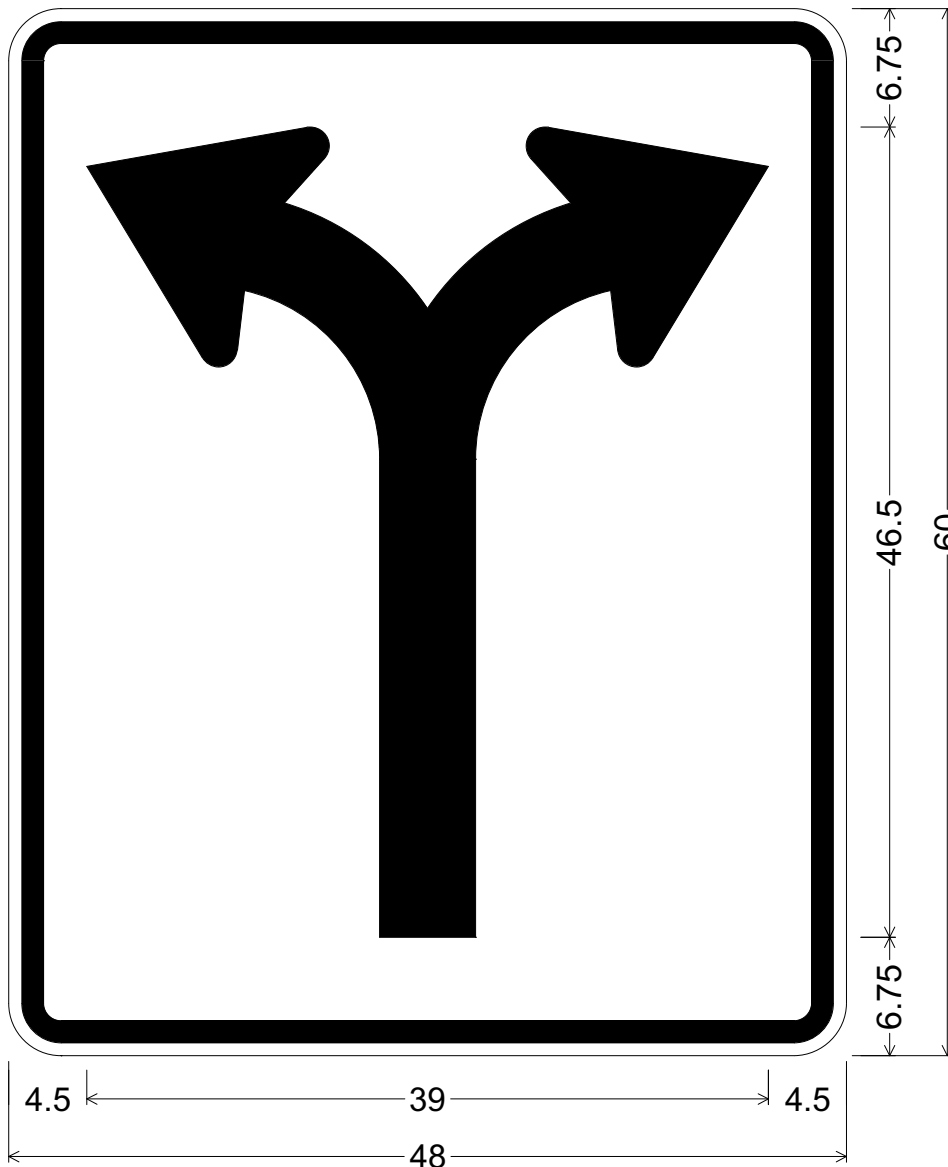


CODE: R3-6Y

SIZE: 48" x 60"
SPECIAL



R03-06Y(48x60-SPCL)WHT;
3.000" Radius, 1.250" Border, 0.750" Indent, Black on White;
Y - Arrow, 5.5" Stroke;

ALL DIMENSIONS ARE IN INCHES



COLORS:
ARROW GRAPHICS & BORDER - BLACK (NON-REFL)
BACKGROUND - WHITE (REFL)

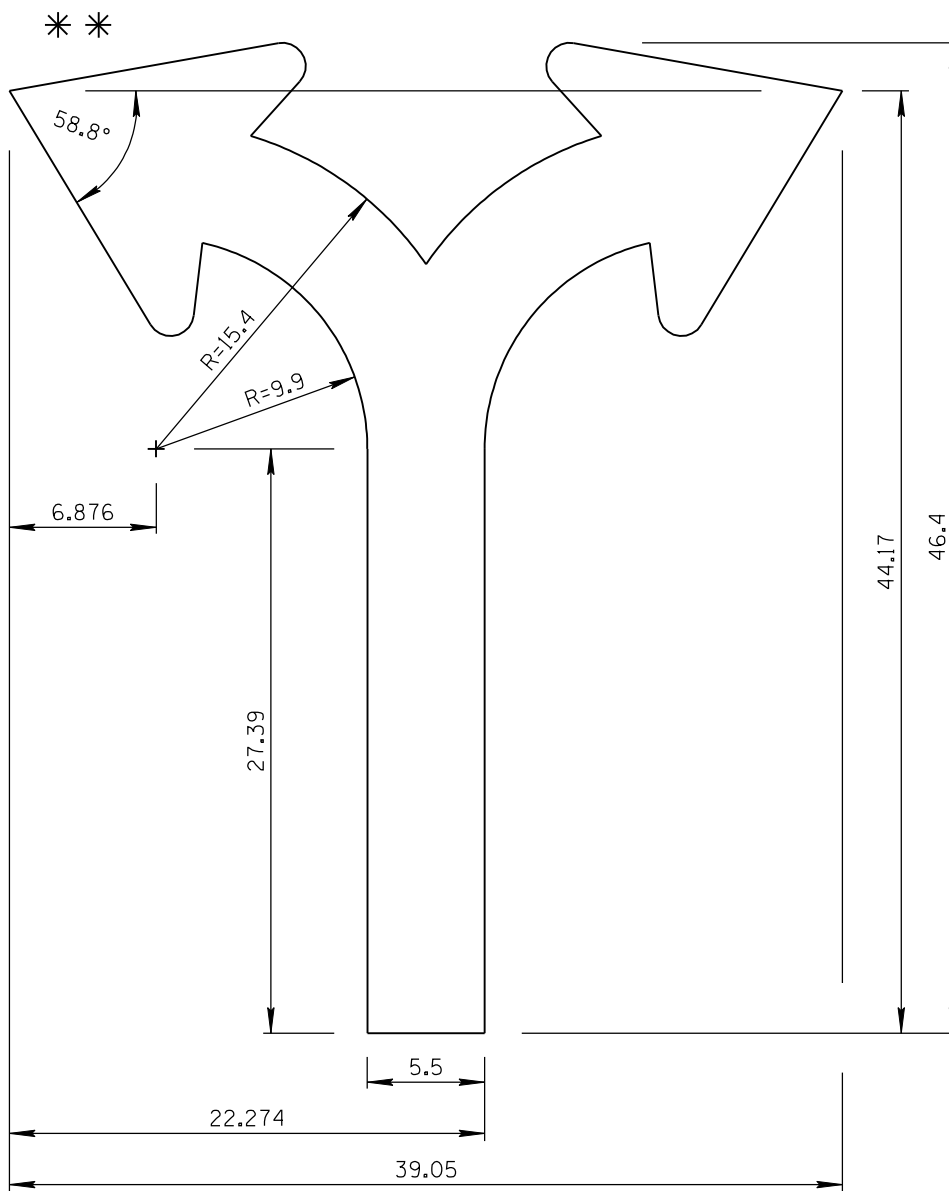
ARIZONA DEPARTMENT OF TRANSPORTATION
TRAFFIC ENGINEERING GROUP

DRAWN:
L. LOPEZ

DATE:
JULY / 2015

APPROVED:
SIGNATURE ON FILE

ARROW CODE: Y
5.5"
Stroke



5.5" Stroke

$**$ For arrowhead dimensions, see
ADOT STANDARD ARROW HEAD DETAILS.

All dimensions are in inches. Length
and width dimensions can be rounded
to the nearest $\frac{1}{8}$ inch.

ARIZONA DEPARTMENT OF TRANSPORTATION
TRAFFIC ENGINEERING GROUP

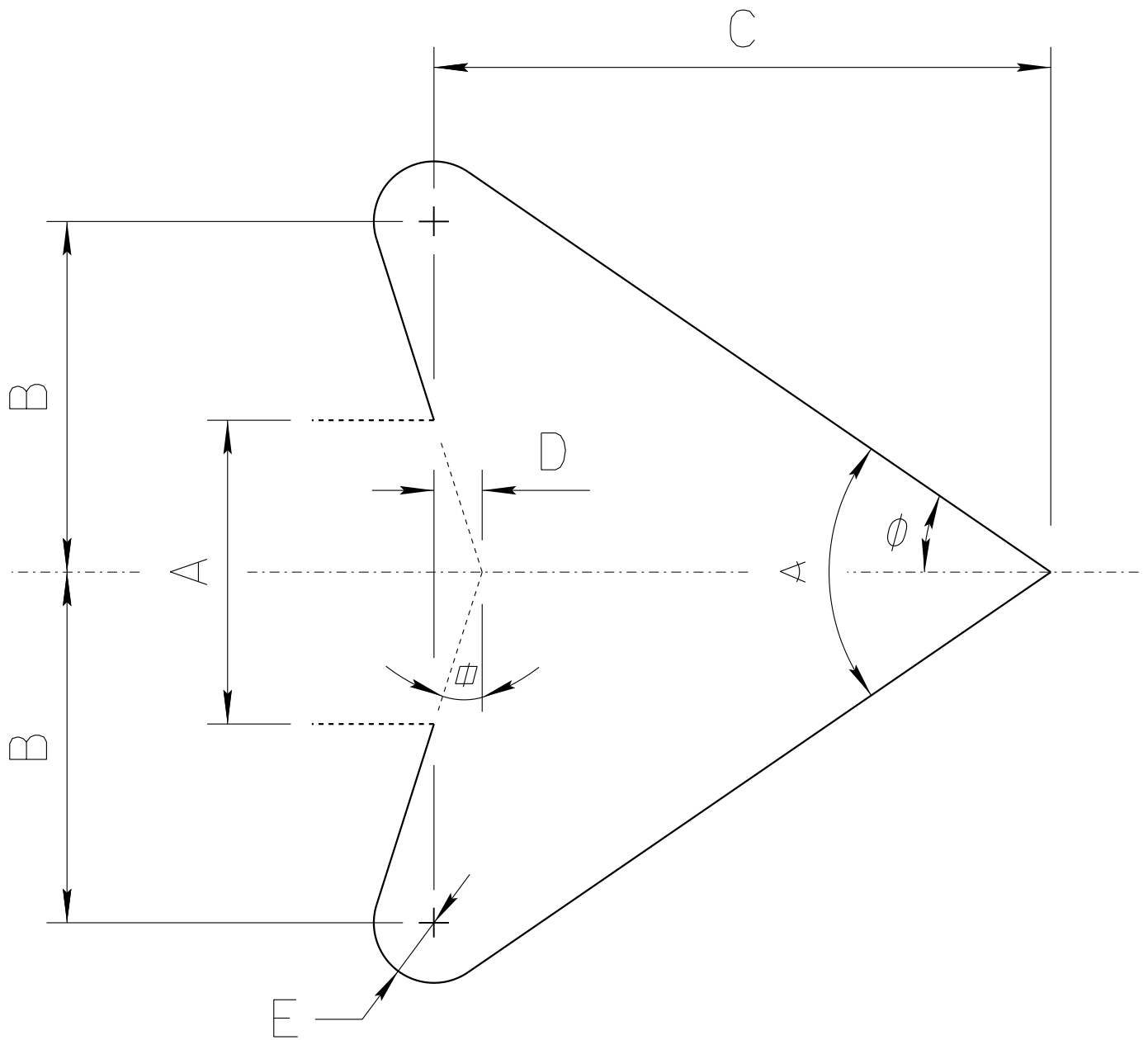
DRAWN:

L. LOPEZ

DATE:

JULY/2015

ADOT STANDARD ARROW HEAD DETAILS



$A = \text{Arrow Shaft Stroke Width}$

$B = 1.15 \times A$

$C = 2.025 \times A$

$D = 0.16169 \times A$

$E = 0.2 \times A$

$\alpha = 17.92^\circ$

$\phi = 34.519^\circ$

$\angle = 69.038^\circ$

ARIZONA DEPARTMENT OF TRANSPORTATION
TRAFFIC ENGINEERING GROUP

DRAWN:

L. LOPEZ

DATE:

AUGUST/2019