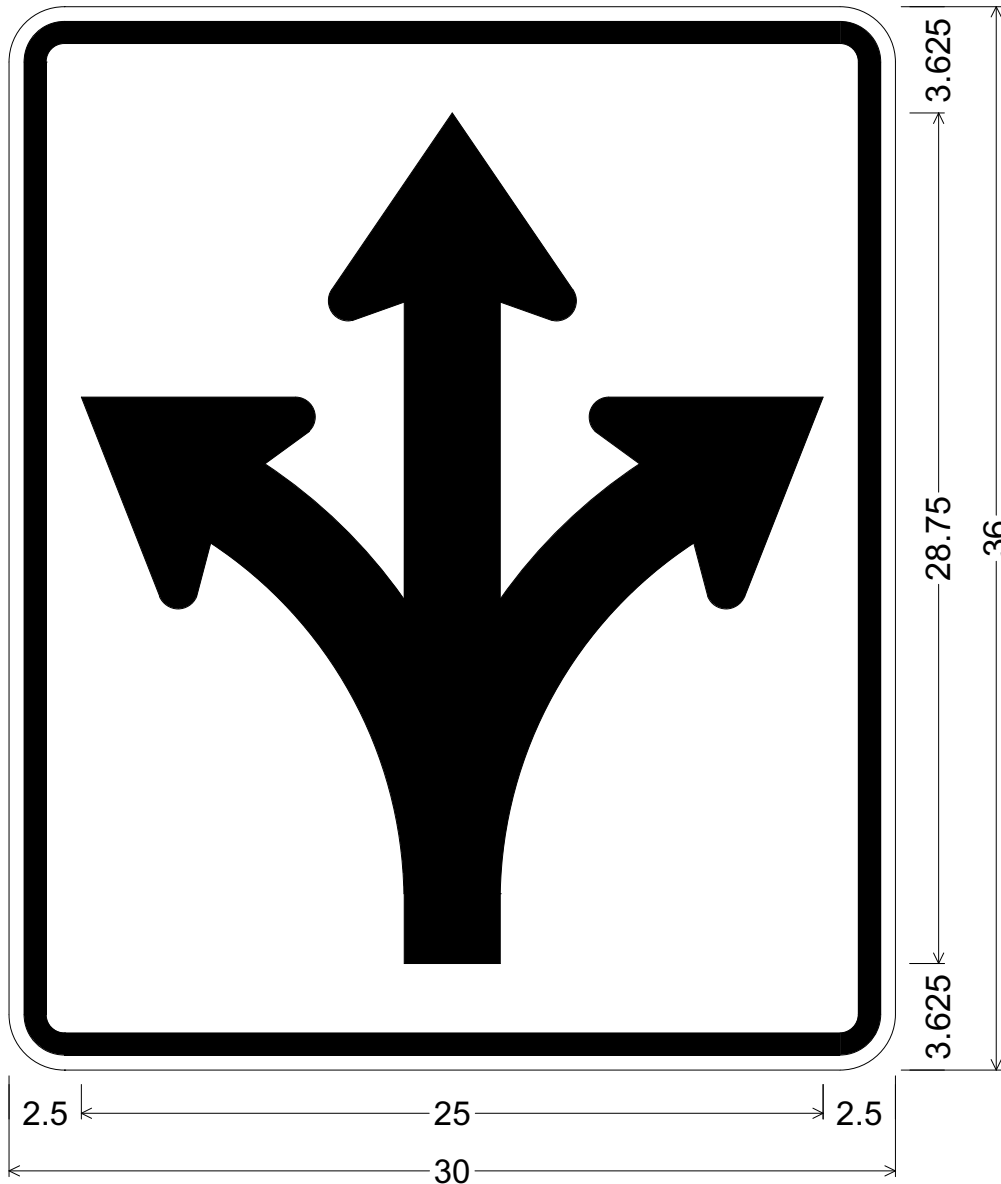


CODE: R3-6X
 SIZE: 30" x 36"
 STANDARD



R03-06X(30x36-STD)WHT;
 1.875" Radius, 0.750" Border, 0.500" Indent, Black on White;
 X - Arrow, 3.25" Stroke;

ALL DIMENSIONS ARE IN INCHES



COLORS:
 ARROW GRAPHICS & BORDER - BLACK (NON-REFL)
 BACKGROUND - WHITE (REFL)

ARIZONA DEPARTMENT OF TRANSPORTATION
 TRAFFIC ENGINEERING GROUP

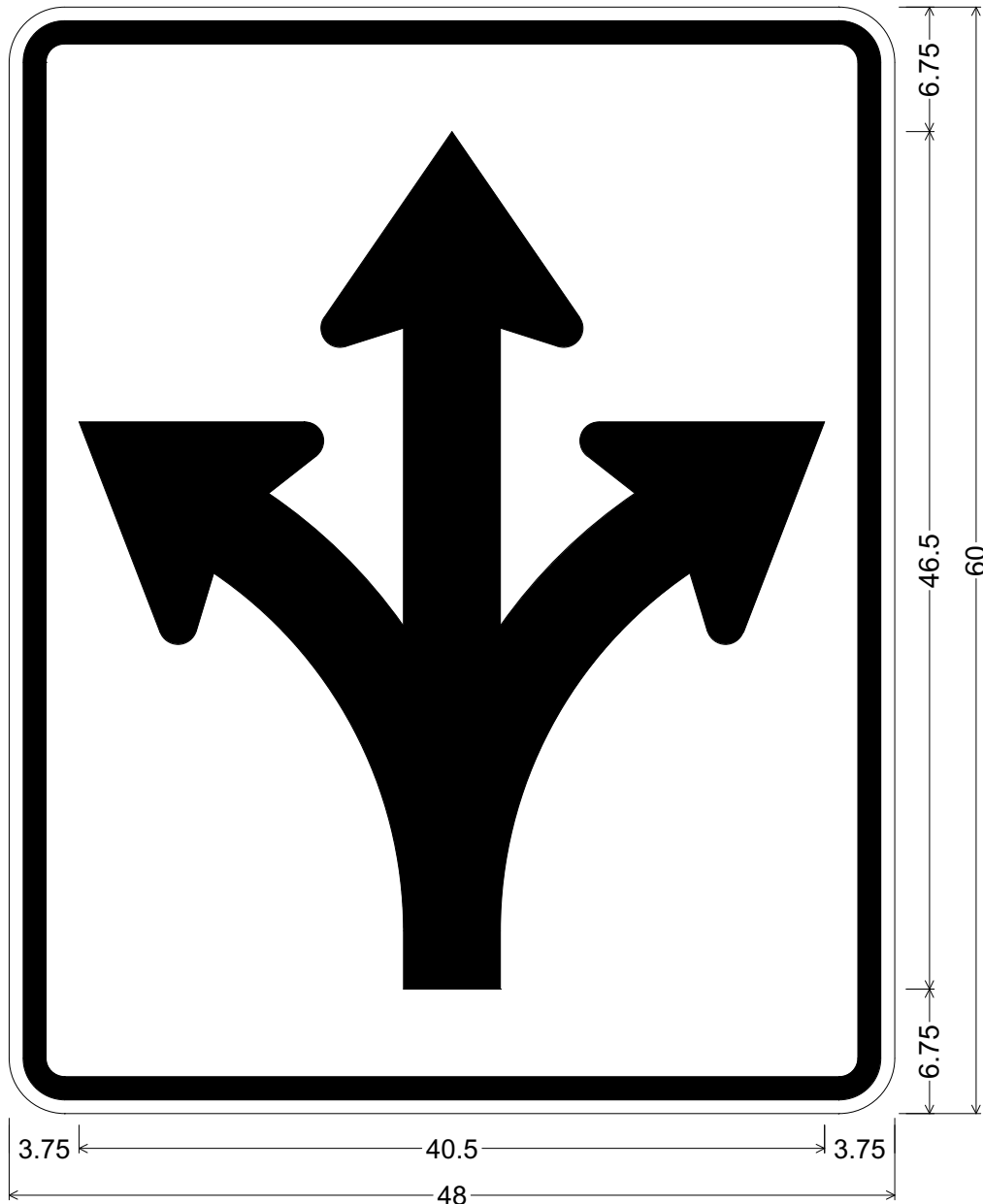
DRAWN:
 L. LOPEZ

DATE:
 JULY / 2015

APPROVED:
 SIGNATURE ON FILE

CODE: R3-6X

SIZE: 48" x 60"
SPECIAL



R03-06X(48x60-SPCL)WHT;
3.000" Radius, 1.250" Border, 0.750" Indent, Black on White;
X - Arrow, 5.25" Stroke;

ALL DIMENSIONS ARE IN INCHES



COLORS:

ARROW GRAPHICS & BORDER - BLACK (NON-REFL)
BACKGROUND - WHITE (REFL)

ARIZONA DEPARTMENT OF TRANSPORTATION
TRAFFIC ENGINEERING GROUP

DRAWN:

L. LOPEZ

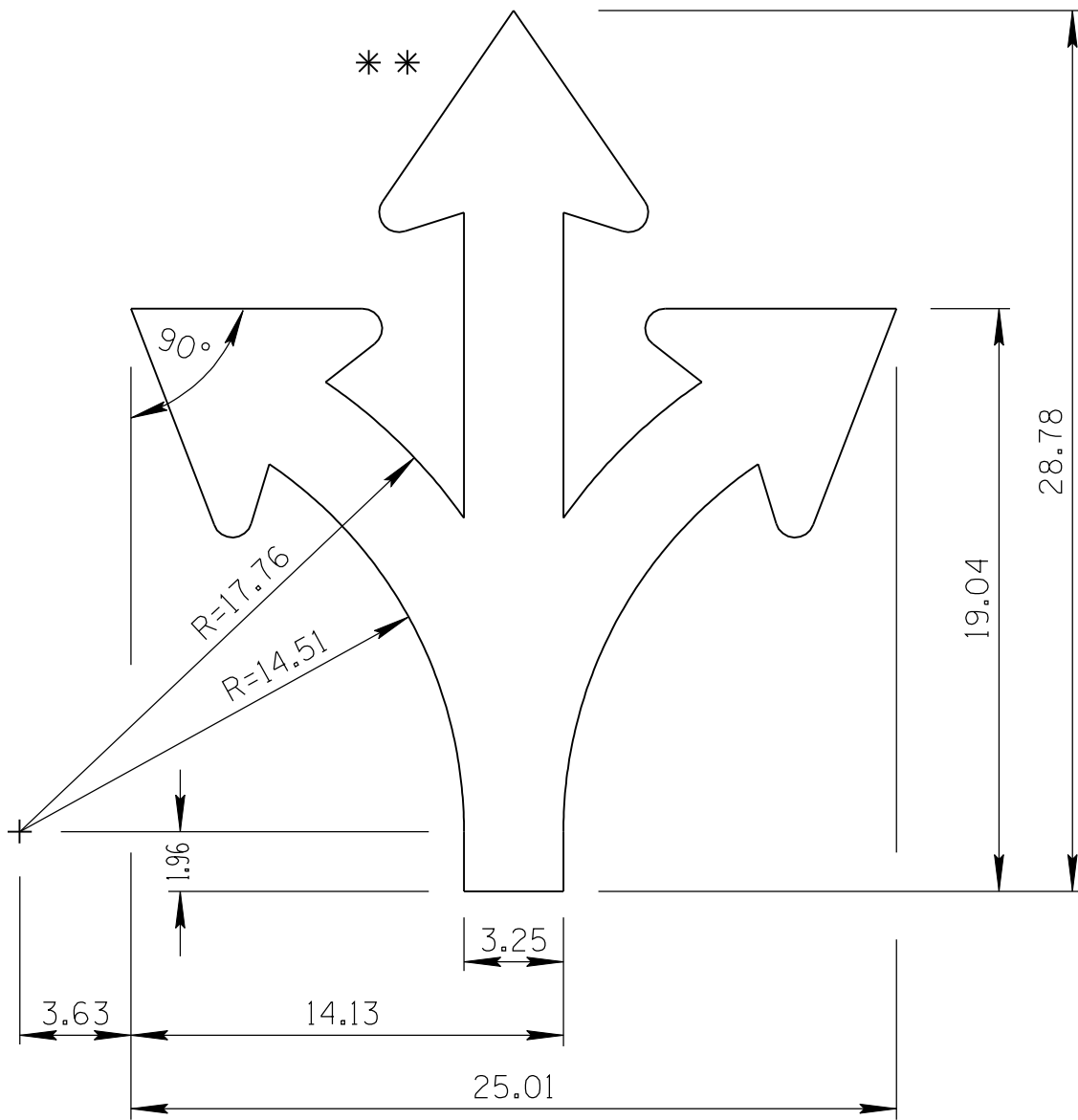
DATE:

JULY / 2015

APPROVED:

SIGNATURE ON FILE

ARROW CODE: X
3.25"
Stroke



3.25" Stroke

** For arrowhead dimensions, see
ADOT STANDARD ARROW HEAD DETAILS.

All dimensions are in inches. Length
and width dimensions can be rounded
to the nearest 1/8 inch.

ARIZONA DEPARTMENT OF TRANSPORTATION
TRAFFIC ENGINEERING GROUP

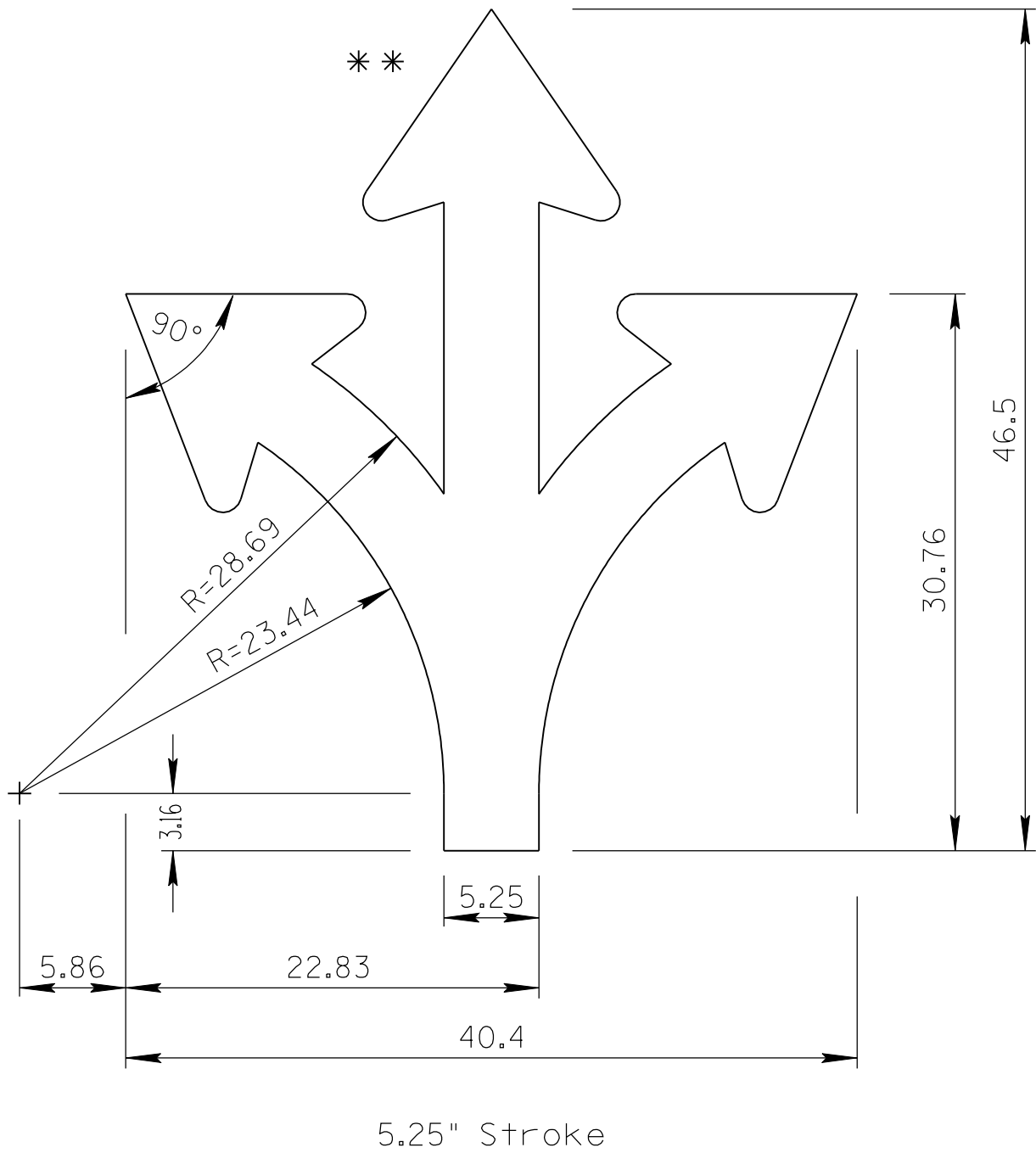
DRAWN:

L. LOPEZ

DATE:

JULY/2015

ARROW CODE: X
5.25"
Stroke



5.25" Stroke

** For arrowhead dimensions, see
ADOT STANDARD ARROW HEAD DETAILS.

All dimensions are in inches. Length
and width dimensions can be rounded
to the nearest 1/8 inch.

ARIZONA DEPARTMENT OF TRANSPORTATION
TRAFFIC ENGINEERING GROUP

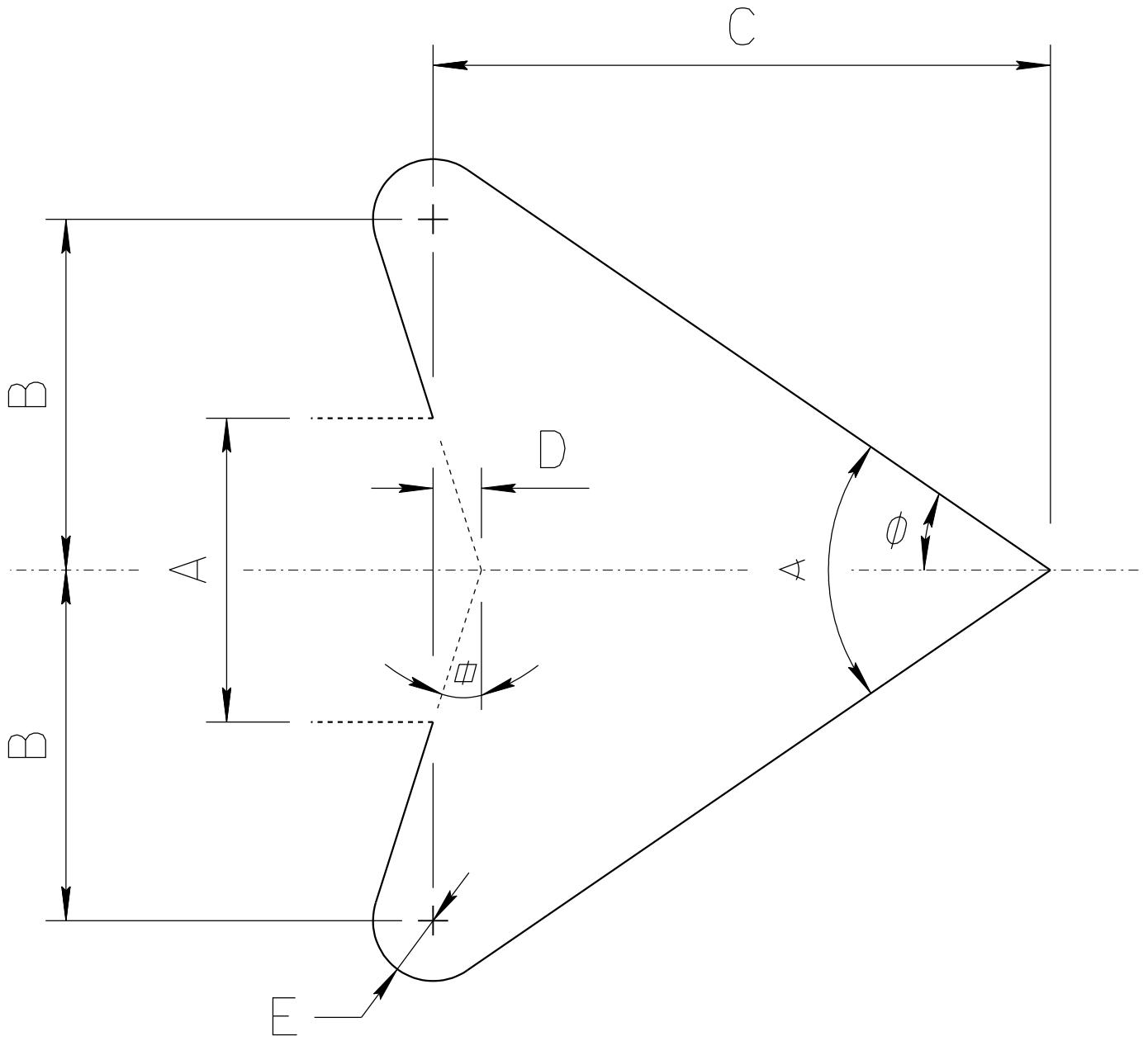
DRAWN:

L. LOPEZ

DATE:

JULY/2015

ADOT STANDARD ARROW HEAD DETAILS



A = Arrow Shaft Stroke Width

B = $1.15 \times A$

C = $2.025 \times A$

D = $0.16169 \times A$

E = $0.2 \times A$

α = 17.92°

ϕ = 34.519°

\angle = 68.038°

ARIZONA DEPARTMENT OF TRANSPORTATION
TRAFFIC ENGINEERING GROUP

DRAWN:

L. LOPEZ

DATE:

JULY/2015