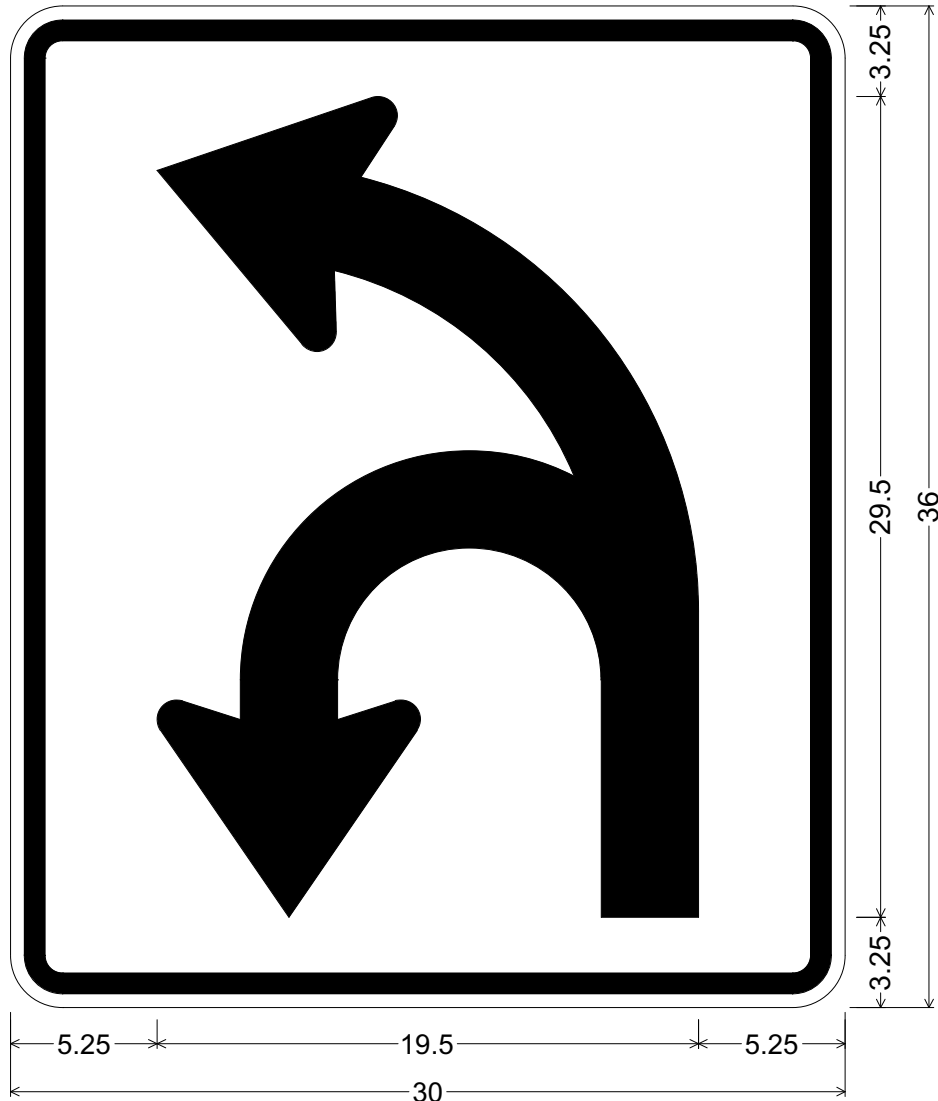


CODE: R3-6T
 SIZE: 30" x 36"
 STANDARD



R03-06T(30x36-STD)WHT;
 1.875" Radius, 0.750" Border, 0.500" Indent, Black on White;
 T - Arrow, 3.5" Stroke;

ALL DIMENSIONS ARE IN INCHES



COLORS:

ARROW GRAPHICS & BORDER - BLACK (NON-REFL)
 BACKGROUND - WHITE (REFL)

ARIZONA DEPARTMENT OF TRANSPORTATION
 TRAFFIC ENGINEERING GROUP

DRAWN:

L. LOPEZ

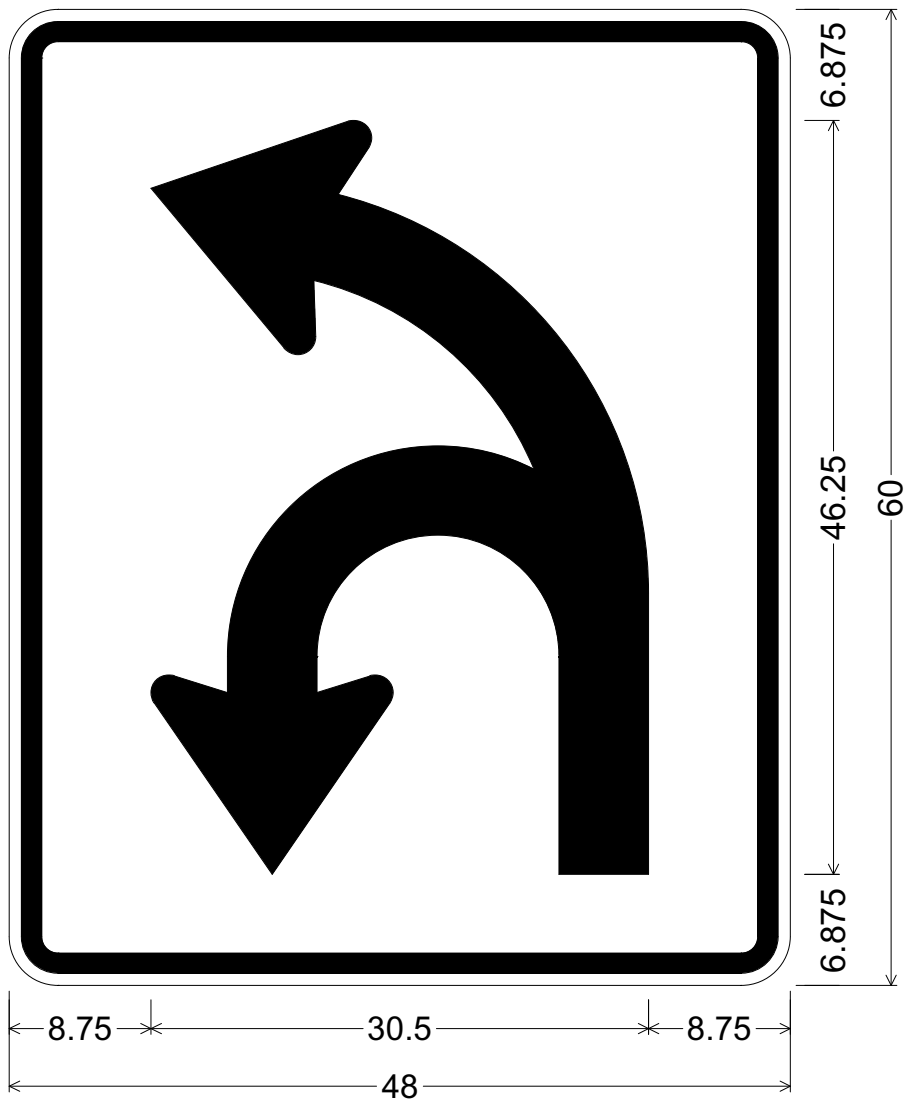
DATE:

JULY / 2015

APPROVED:

SIGNATURE ON FILE

CODE: R3-6T
 SIZE: 48" x 60"
 SPECIAL



R03-06T(48x60-SPCL)WHT;
 3.000" Radius, 1.250" Border, 0.750" Indent, Black on White;
 T - Arrow, 5.5" Stroke;

ALL DIMENSIONS ARE IN INCHES



COLORS:

ARROW GRAPHICS & BORDER - BLACK (NON-REFL)
 BACKGROUND - WHITE (REFL)

ARIZONA DEPARTMENT OF TRANSPORTATION
 TRAFFIC ENGINEERING GROUP

DRAWN:

L. LOPEZ

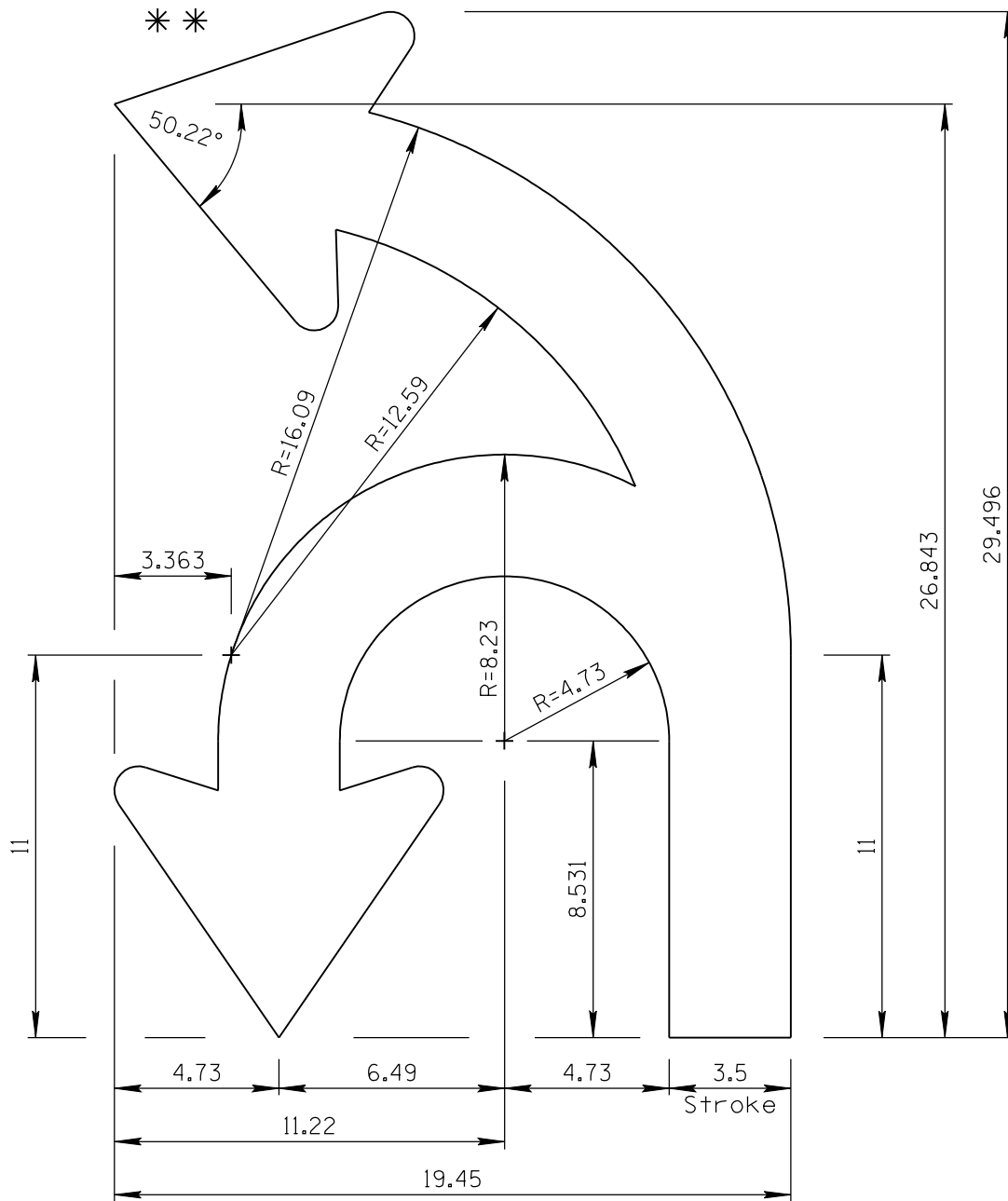
DATE:

JULY / 2015

APPROVED:

SIGNATURE ON FILE

ARROW CODE: T
 3.5"
 Stroke



3.5" Stroke

** For arrowhead dimensions, see
 ADOT STANDARD ARROW HEAD DETAILS.

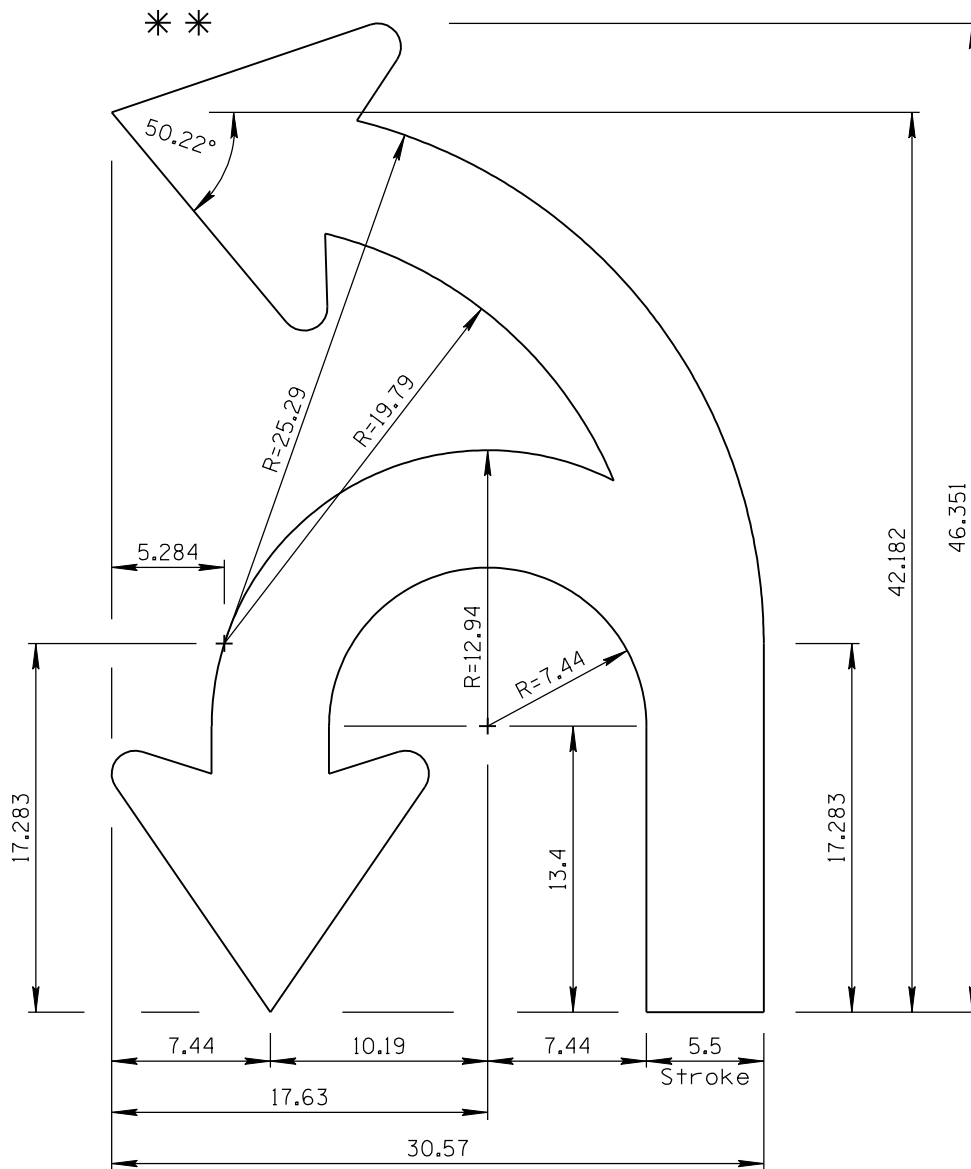
All dimensions are in inches. Length
 and width dimensions can be rounded
 to the nearest 1/8 inch.

ARIZONA DEPARTMENT OF TRANSPORTATION
 TRAFFIC ENGINEERING GROUP

DRAWN:
 L. LOPEZ

DATE:
 JULY/2015

ARROW CODE: T
 5.5"
 Stroke



5.5" Stroke

** For arrowhead dimensions, see
 ADOT STANDARD ARROW HEAD DETAILS.

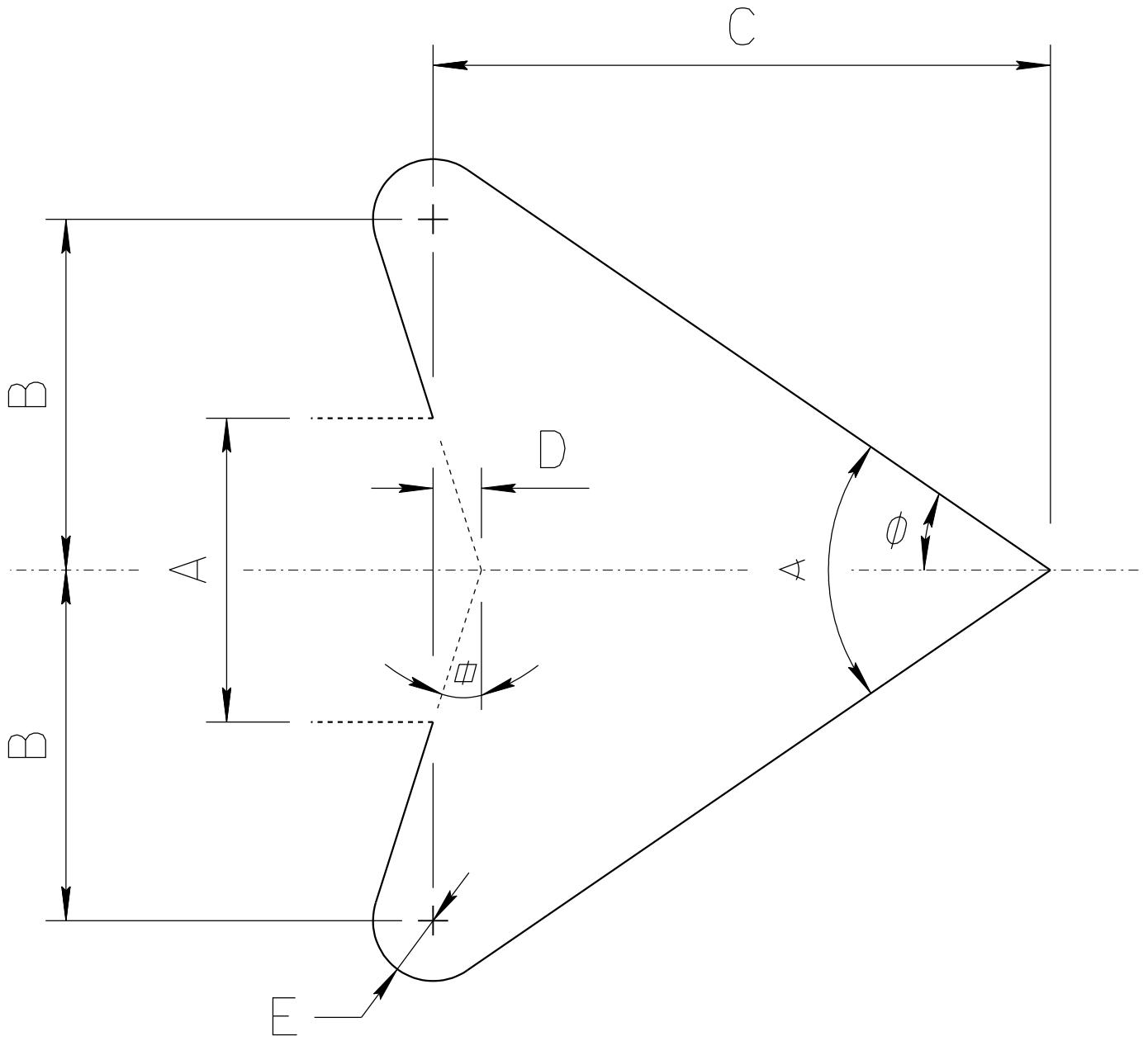
All dimensions are in inches. Length
 and width dimensions can be rounded
 to the nearest 1/8 inch.

ARIZONA DEPARTMENT OF TRANSPORTATION
 TRAFFIC ENGINEERING GROUP

DRAWN:
 L. LOPEZ

DATE:
 JULY/2015

ADOT STANDARD ARROW HEAD DETAILS



A = Arrow Shaft Stroke Width

B = $1.15 \times A$

C = $2.025 \times A$

D = $0.16169 \times A$

E = $0.2 \times A$

α = 17.92°

ϕ = 34.519°

\sphericalangle = 68.038°

ARIZONA DEPARTMENT OF TRANSPORTATION
TRAFFIC ENGINEERING GROUP

DRAWN:

L. LOPEZ

DATE:

JULY/2015