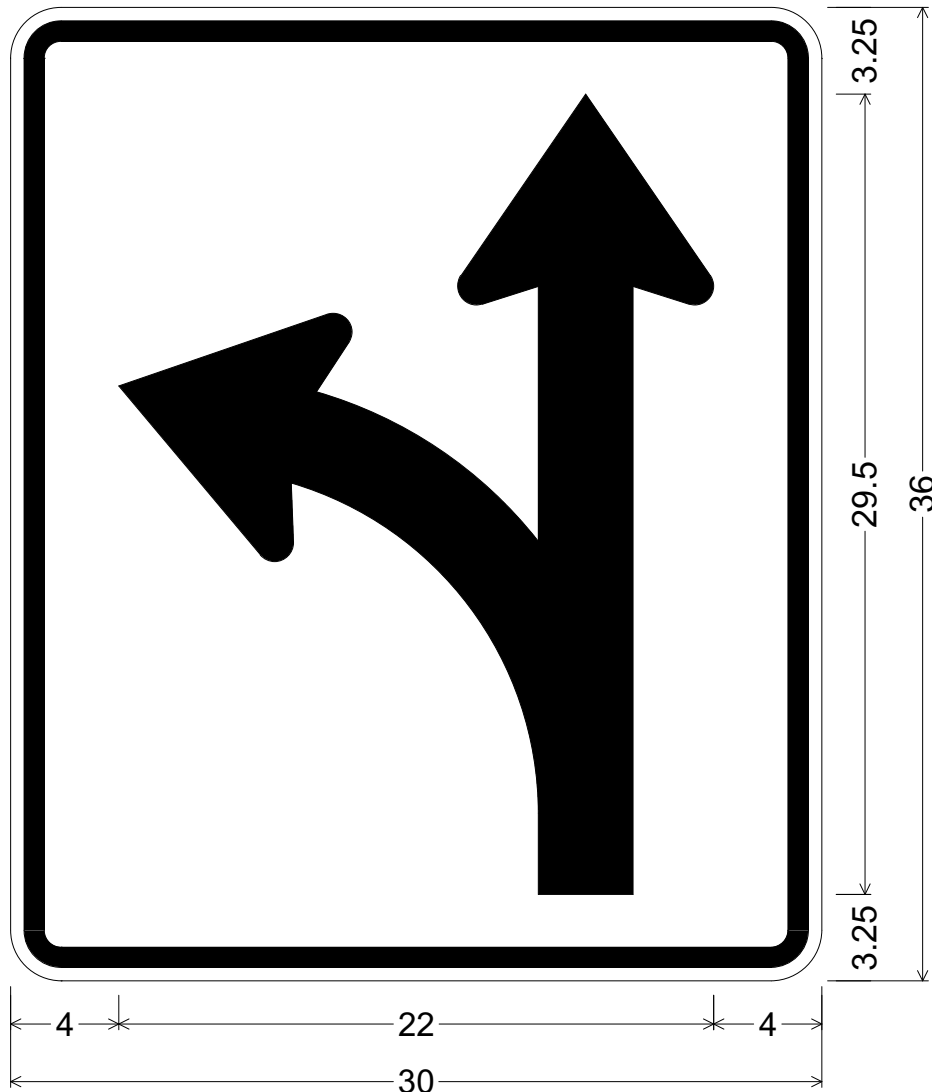


CODE: R3-6L  
 SIZE: 30" x 36"  
 STANDARD



R03-06L(30x36-STD)WHT;  
 1.875" Radius, 0.750" Border, 0.500" Indent, Black on White;  
 K - Arrow, 3.5" Stroke;

ALL DIMENSIONS ARE IN INCHES



**COLORS:**  
 ARROW GRAPHICS & BORDER - BLACK (NON-REFL)  
 BACKGROUND - WHITE (REFL)

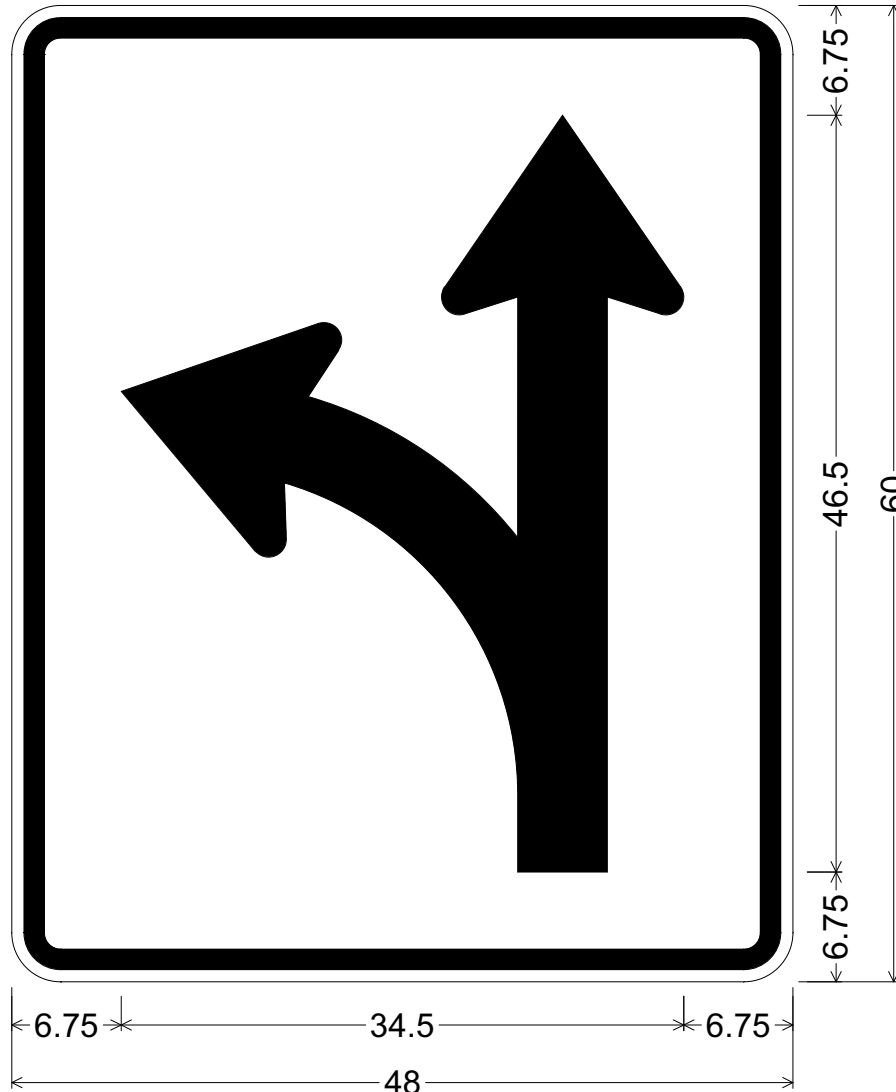
ARIZONA DEPARTMENT OF TRANSPORTATION  
 TRAFFIC ENGINEERING GROUP

DRAWN:  
 L. LOPEZ

DATE:  
 JULY / 2015


APPROVED:  
 SIGNATURE ON FILE

CODE: R3-6L  
 SIZE: 48" x 60"  
 SPECIAL

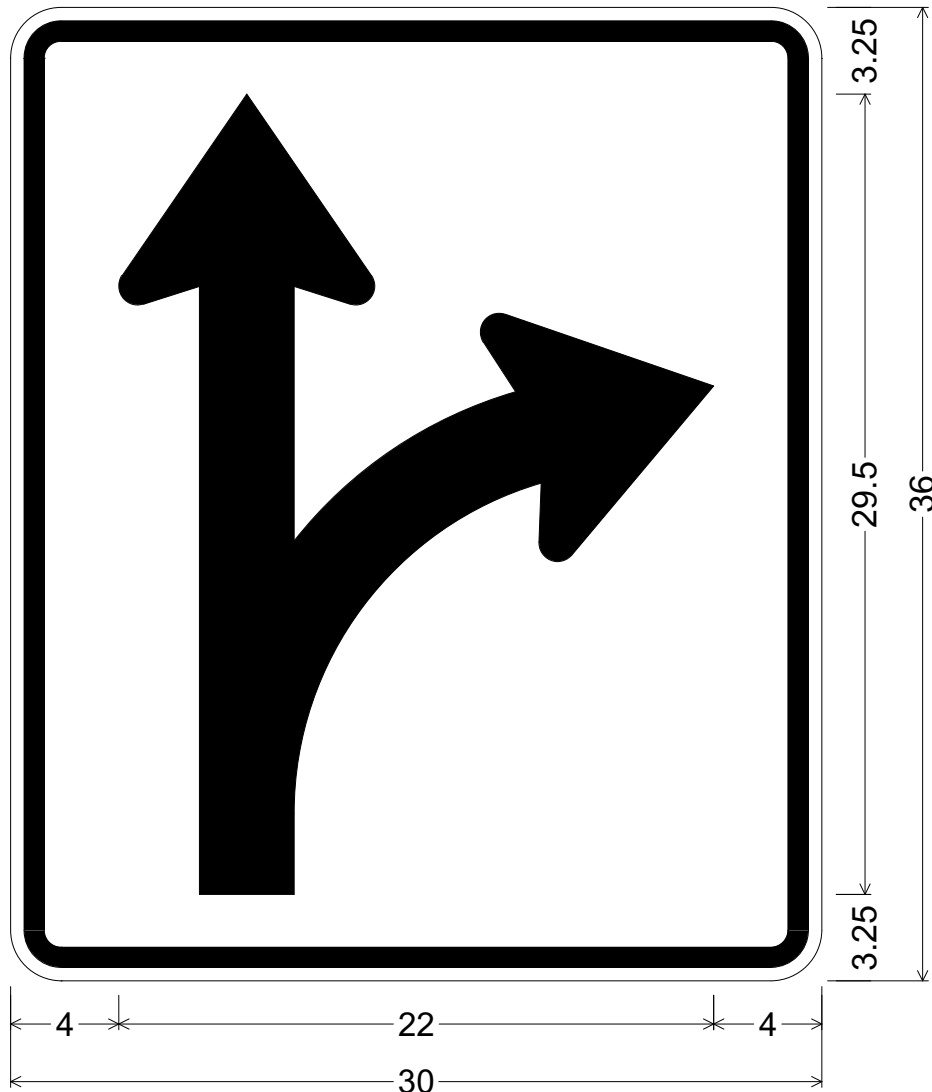


R03-06L(48x60-SPCL)WHT;  
 3.000" Radius, 1.250" Border, 0.750" Indent, Black on White;  
 K - Arrow, 5.5" Stroke;

ALL DIMENSIONS ARE IN INCHES

	<b>COLORS:</b> ARROW GRAPHICS & BORDER - BLACK (NON-REFL) BACKGROUND - WHITE (REFL)	ARIZONA DEPARTMENT OF TRANSPORTATION TRAFFIC ENGINEERING GROUP	
		DRAWN: <div style="text-align: center;">L. LOPEZ</div>	DATE: <div style="text-align: center;">JULY / 2015</div>
		APPROVED: <div style="text-align: center;">SIGNATURE ON FILE</div>	

CODE: R3-6R  
 SIZE: 30" x 36"  
 STANDARD



R03-06R(30x36-STD)WHT;  
 1.875" Radius, 0.750" Border, 0.500" Indent, Black on White;  
 Q - Arrow, 3.5" Stroke;

ALL DIMENSIONS ARE IN INCHES



**COLORS:**  
 ARROW GRAPHICS & BORDER - BLACK (NON-REFL)  
 BACKGROUND - WHITE (REFL)

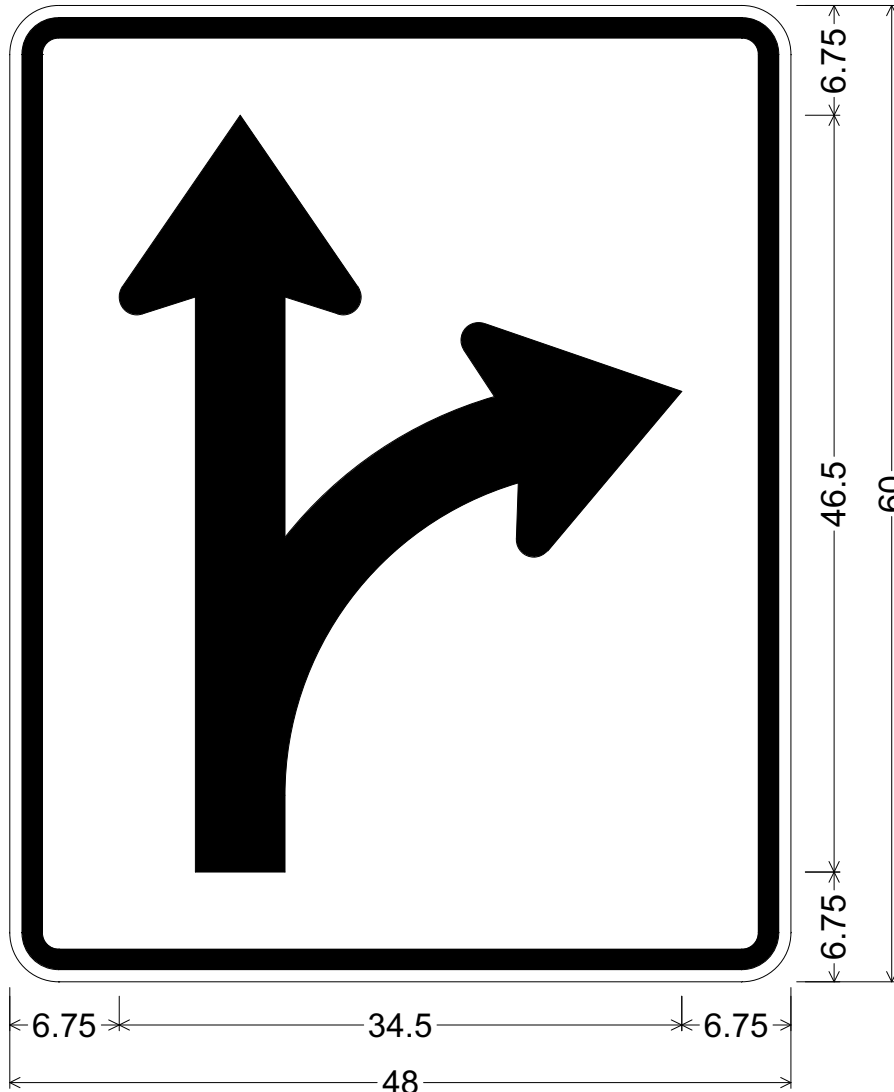
ARIZONA DEPARTMENT OF TRANSPORTATION  
 TRAFFIC ENGINEERING GROUP

DRAWN:  
 L. LOPEZ

DATE:  
 JULY / 2015


APPROVED:  
 SIGNATURE ON FILE

CODE: R3-6R  
 SIZE: 48" x 60"  
 SPECIAL

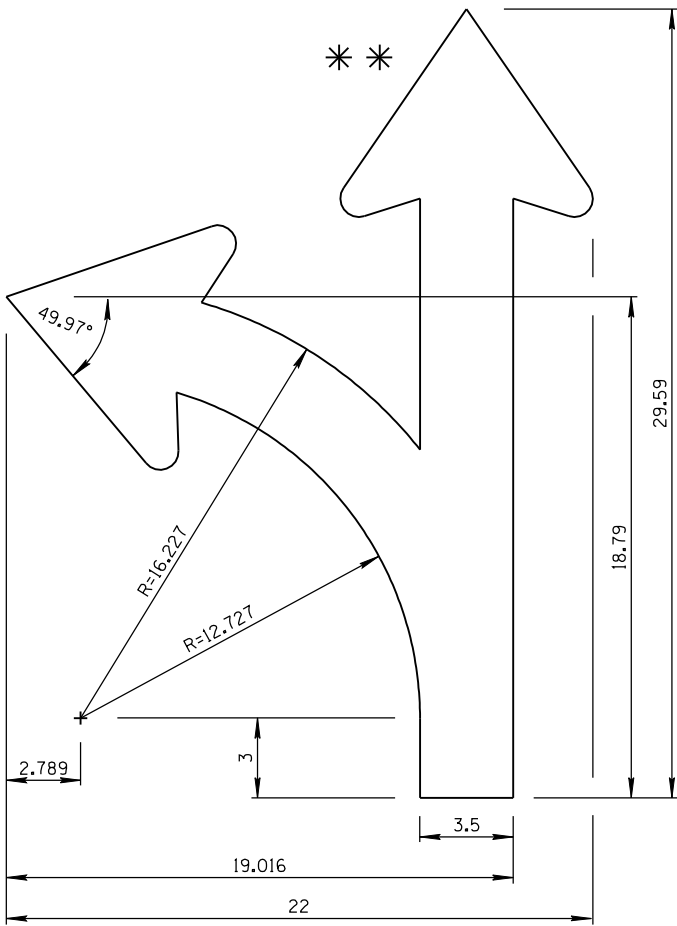


R03-06R(48x60-SPCL)WHT;  
 3.000" Radius, 1.250" Border, 0.750" Indent, Black on White;  
 Q - Arrow, 5.5" Stroke;

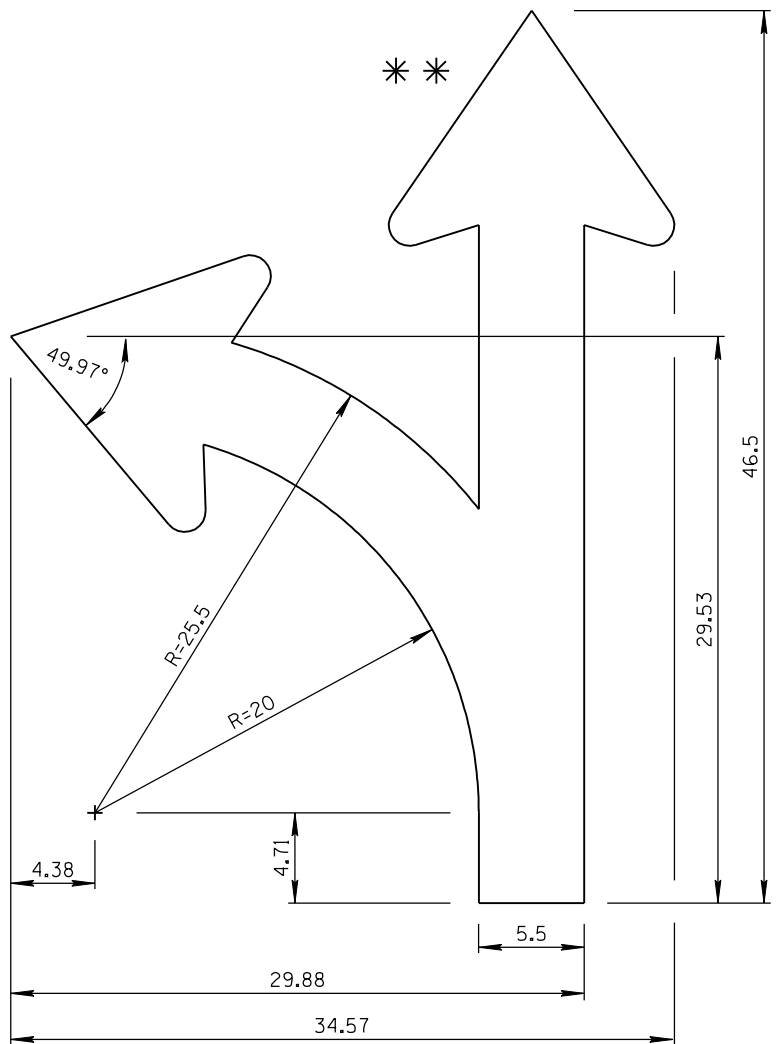
ALL DIMENSIONS ARE IN INCHES

	<b>COLORS:</b> ARROW GRAPHICS & BORDER - BLACK (NON-REFL) BACKGROUND - WHITE (REFL)	ARIZONA DEPARTMENT OF TRANSPORTATION TRAFFIC ENGINEERING GROUP	
		DRAWN: L. LOPEZ	DATE: JULY / 2015
		APPROVED: SIGNATURE ON FILE	

ARROW CODE: K & Q  
 Mirror for  
 Q Arrow  
 3.5" & 5.5"  
 Stroke



3.5" Stroke



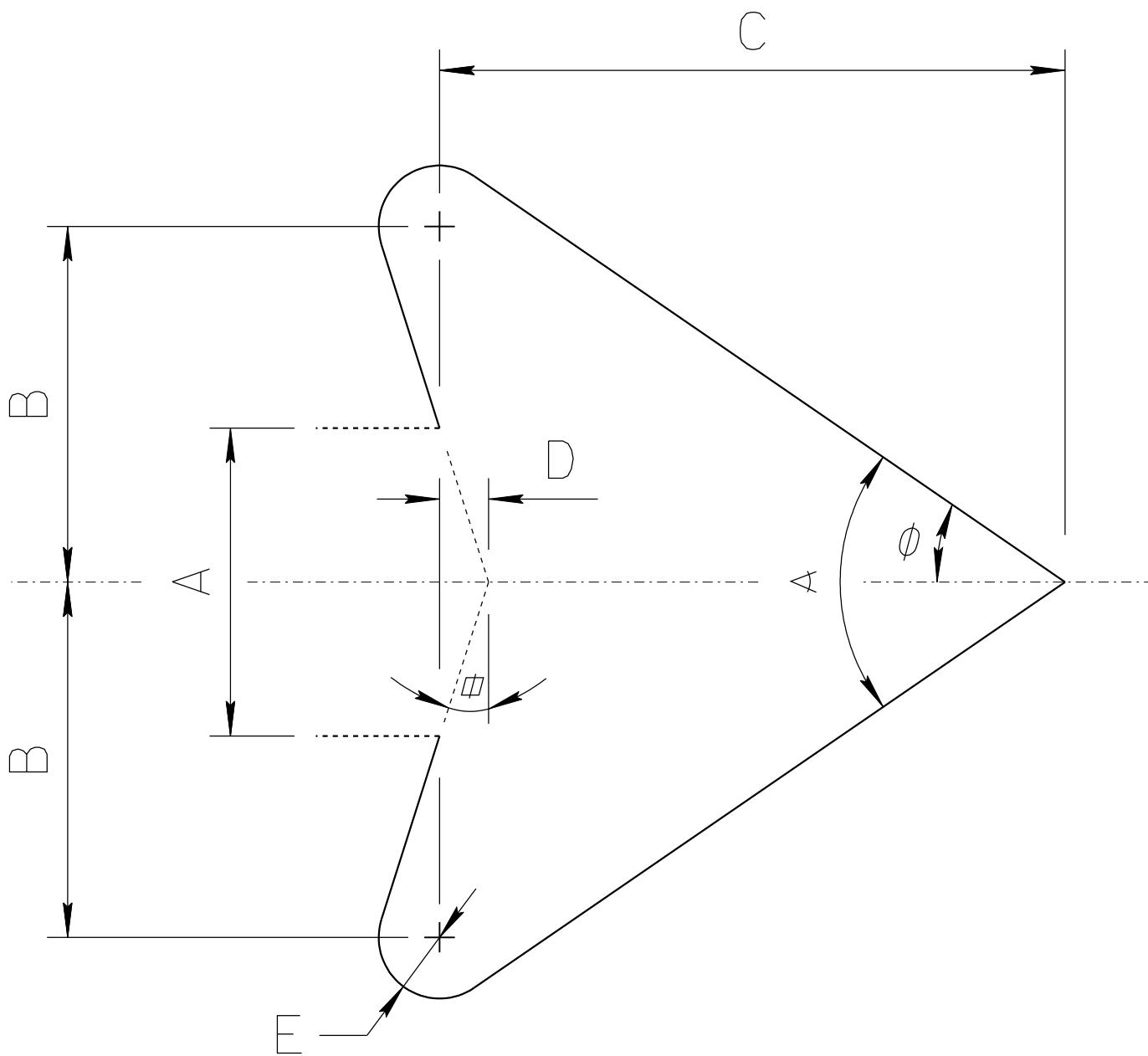
5.5" Stroke

\*\* For arrowhead dimensions, see  
 ADOT STANDARD ARROW HEAD DETAILS.

All dimensions are in inches. Length  
 and width dimensions can be rounded  
 to the nearest 1/8 inch.

ARIZONA DEPARTMENT OF TRANSPORTATION TRAFFIC ENGINEERING GROUP	
DRAWN: L. LOPEZ	DATE: JULY/2015

# ADOT STANDARD ARROW HEAD DETAILS



$A$  = Arrow Shaft Stroke Width

$B$  =  $1.15 \times A$

$C$  =  $2.025 \times A$

$D$  =  $0.16169 \times A$

$E$  =  $0.2 \times A$

$\phi$  =  $17.92^\circ$

$\alpha$  =  $34.519^\circ$

$\alpha$  =  $68.038^\circ$

ARIZONA DEPARTMENT OF TRANSPORTATION  
TRAFFIC ENGINEERING GROUP

DRAWN:

L. LOPEZ

DATE:

JULY/2015