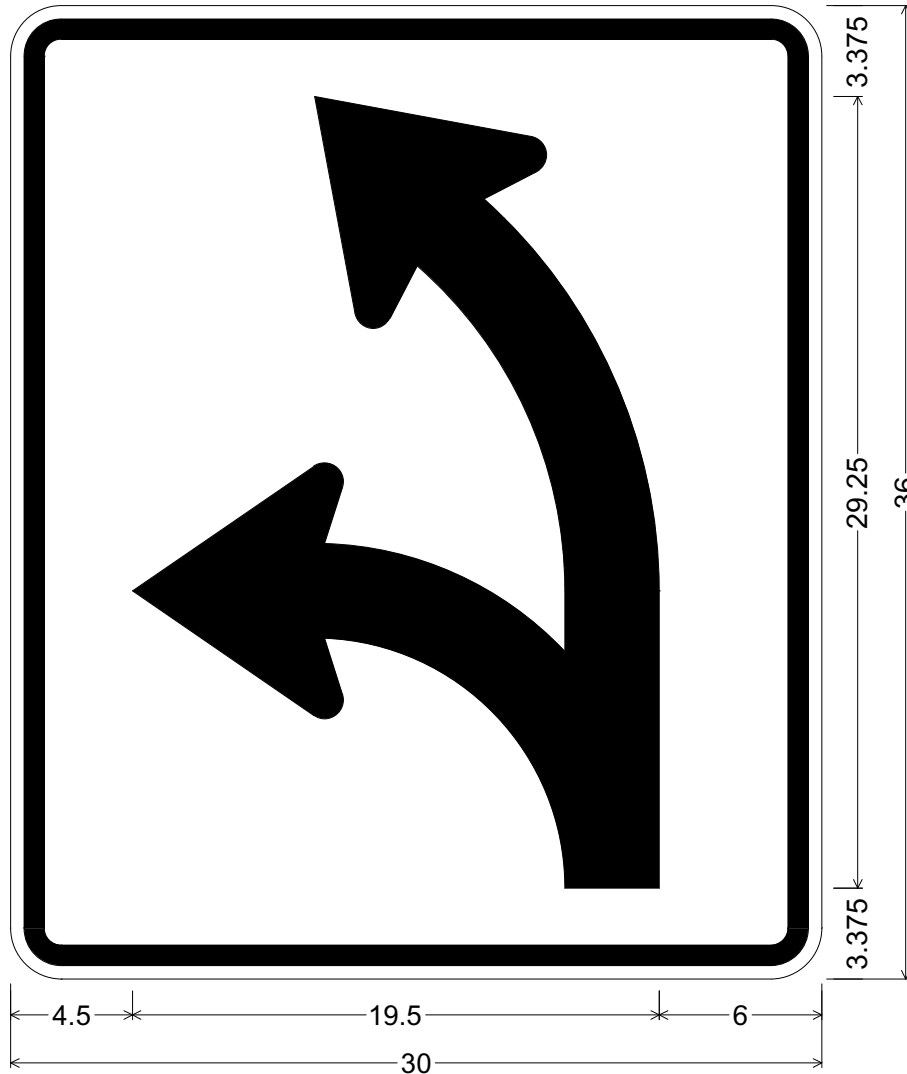


CODE: R3-6J

SIZE: 30" x 36"  
STANDARD



R03-06J(30x36-STD)WHT;  
1.875" Radius, 0.750" Border, 0.500" Indent, Black on White;  
J - Arrow, 3.5" Stroke;

ALL DIMENSIONS ARE IN INCHES



**COLORS:**

ARROW GRAPHICS & BORDER - BLACK (NON-REFL)  
BACKGROUND - WHITE (REFL)

ARIZONA DEPARTMENT OF TRANSPORTATION  
TRAFFIC ENGINEERING GROUP

DRAWN:

L. LOPEZ

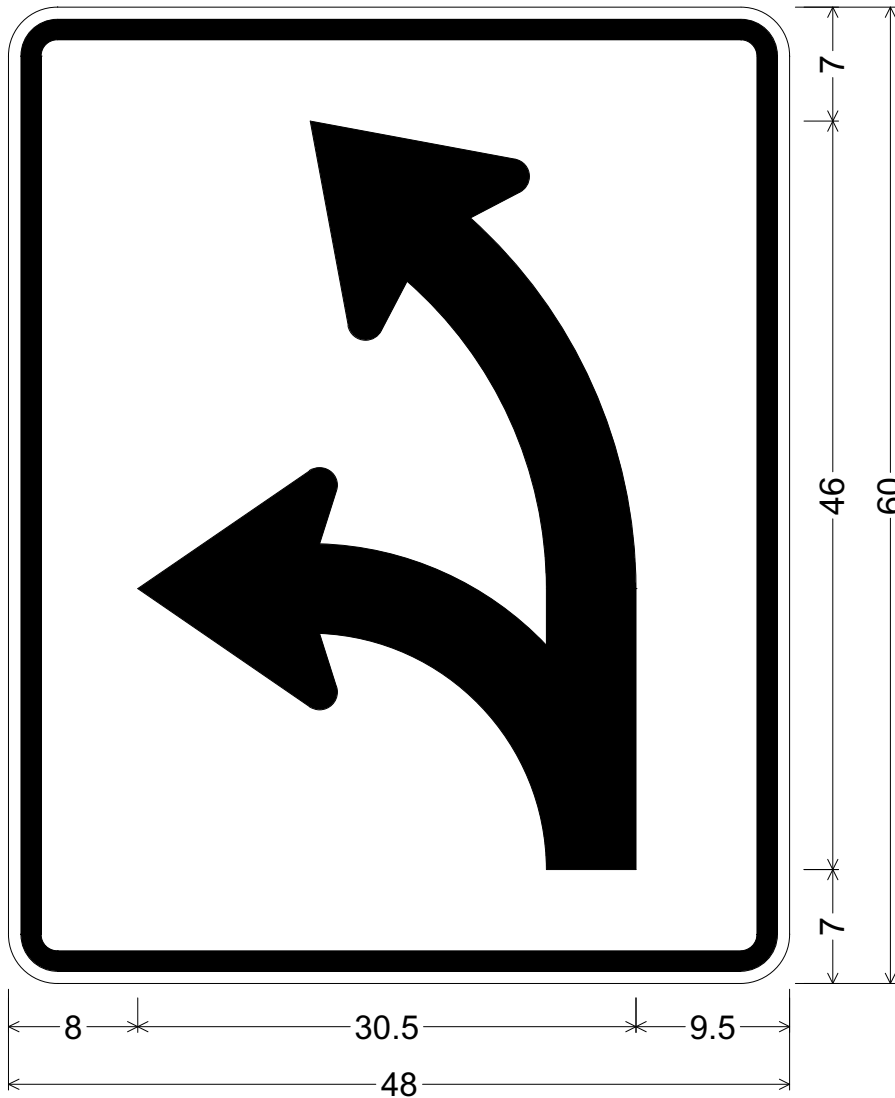
DATE:

JULY / 2015

APPROVED:


SIGNATURE ON FILE

CODE: R3-6J  
 SIZE: 48" x 60"  
 SPECIAL



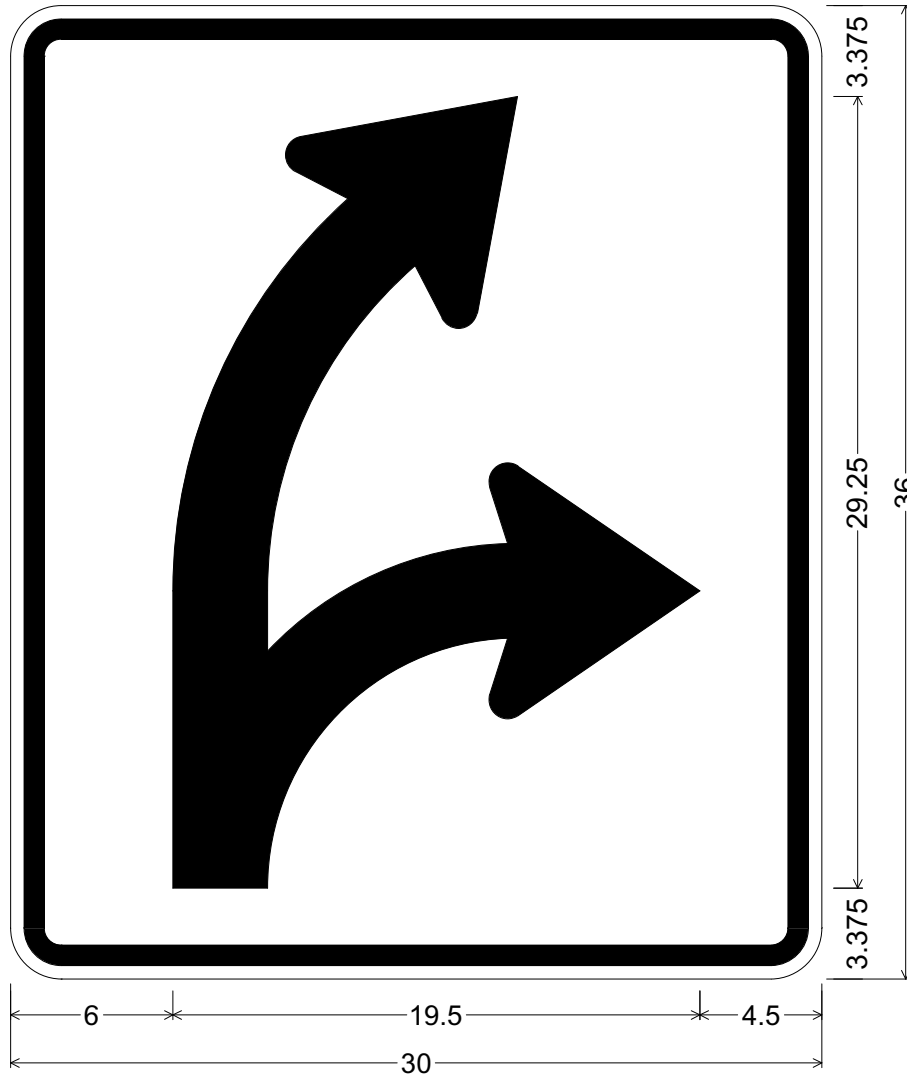
R03-06J(48x60-SPCL)WHT;  
 3.000" Radius, 1.250" Border, 0.750" Indent, Black on White;  
 J - Arrow, 5.5" Stroke;

ALL DIMENSIONS ARE IN INCHES

	<b>COLORS:</b> ARROW GRAPHICS & BORDER - BLACK (NON-REFL) BACKGROUND - WHITE (REFL)	ARIZONA DEPARTMENT OF TRANSPORTATION TRAFFIC ENGINEERING GROUP	
		DRAWN: <p style="text-align: center;">L. LOPEZ</p>	DATE: <p style="text-align: center;">JULY / 2015</p>
		APPROVED: <p style="text-align: center;">SIGNATURE ON FILE</p>	

CODE: R3-6P

SIZE: 30" x 36"  
STANDARD



R03-06P(30x36-STD)WHT;  
1.875" Radius, 0.750" Border, 0.500" Indent, Black on White;  
P - Arrow, 3.5" Stroke;

ALL DIMENSIONS ARE IN INCHES



**COLORS:**  
ARROW GRAPHICS & BORDER - BLACK (NON-REFL)  
BACKGROUND - WHITE (REFL)

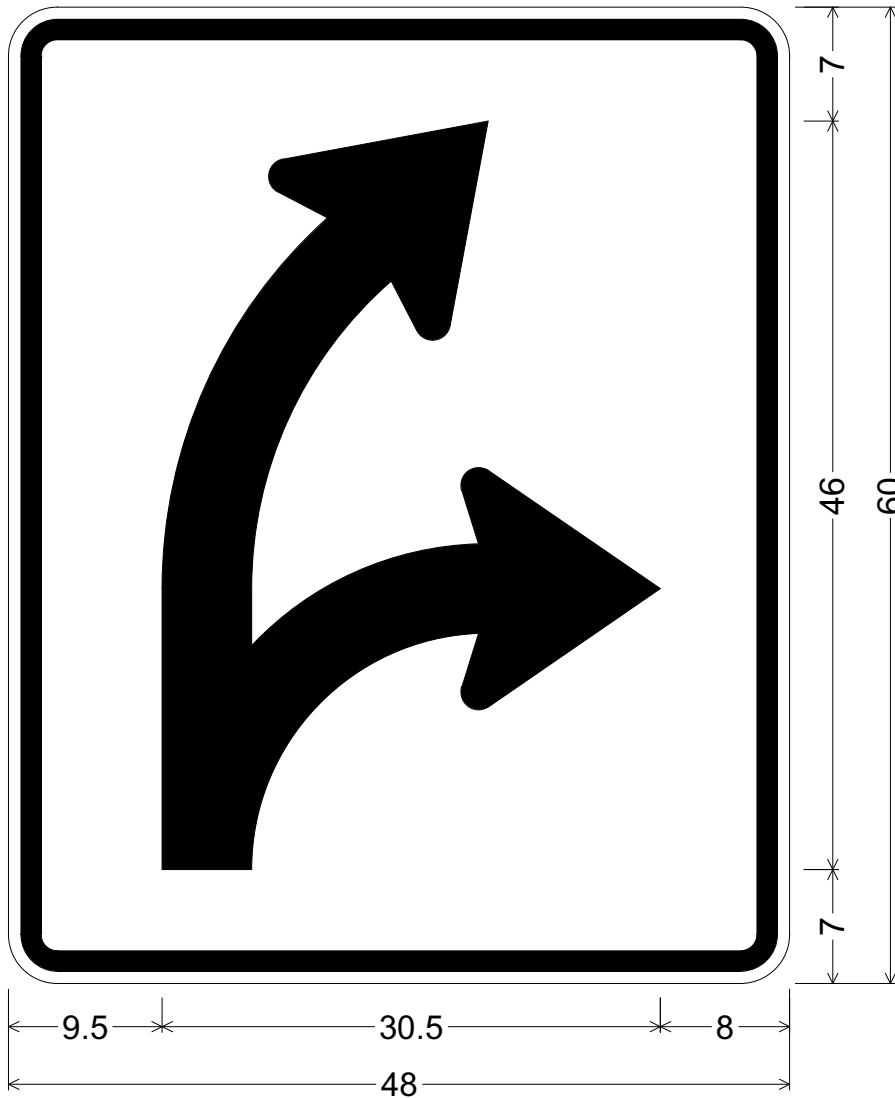
ARIZONA DEPARTMENT OF TRANSPORTATION  
TRAFFIC ENGINEERING GROUP

DRAWN:  
L. LOPEZ

DATE:  
JULY / 2015


APPROVED:  
SIGNATURE ON FILE

CODE: R3-6P  
 SIZE: 48" x 60"  
 SPECIAL



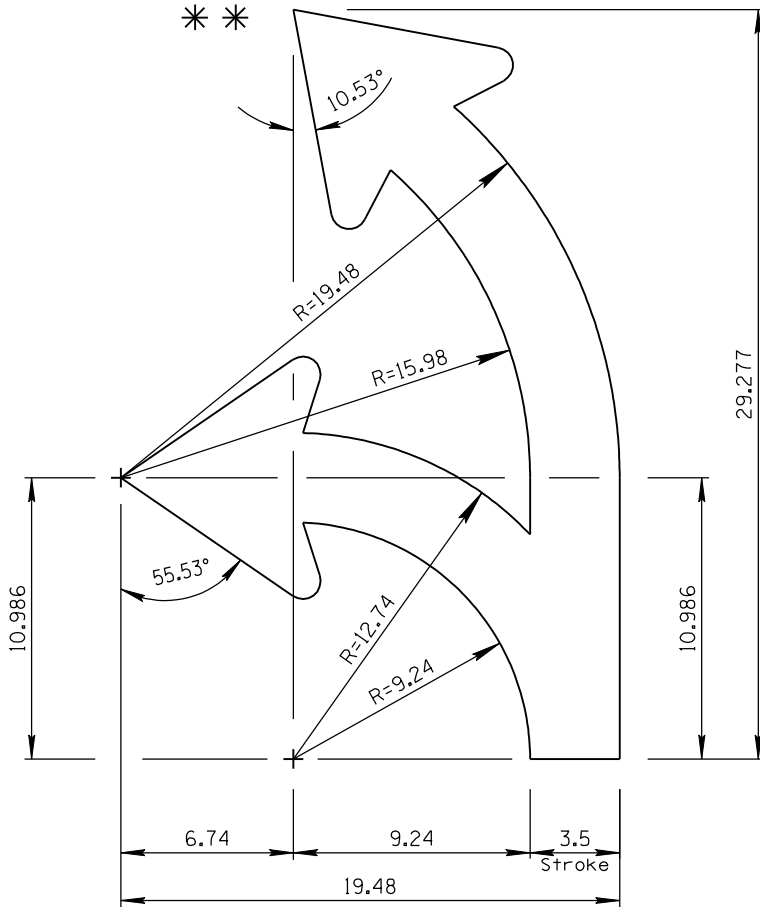
R03-06P(48x60-SPCL)WHT;  
 3.000" Radius, 1.250" Border, 0.750" Indent, Black on White;  
 P - Arrow, 5.5" Stroke;

ALL DIMENSIONS ARE IN INCHES

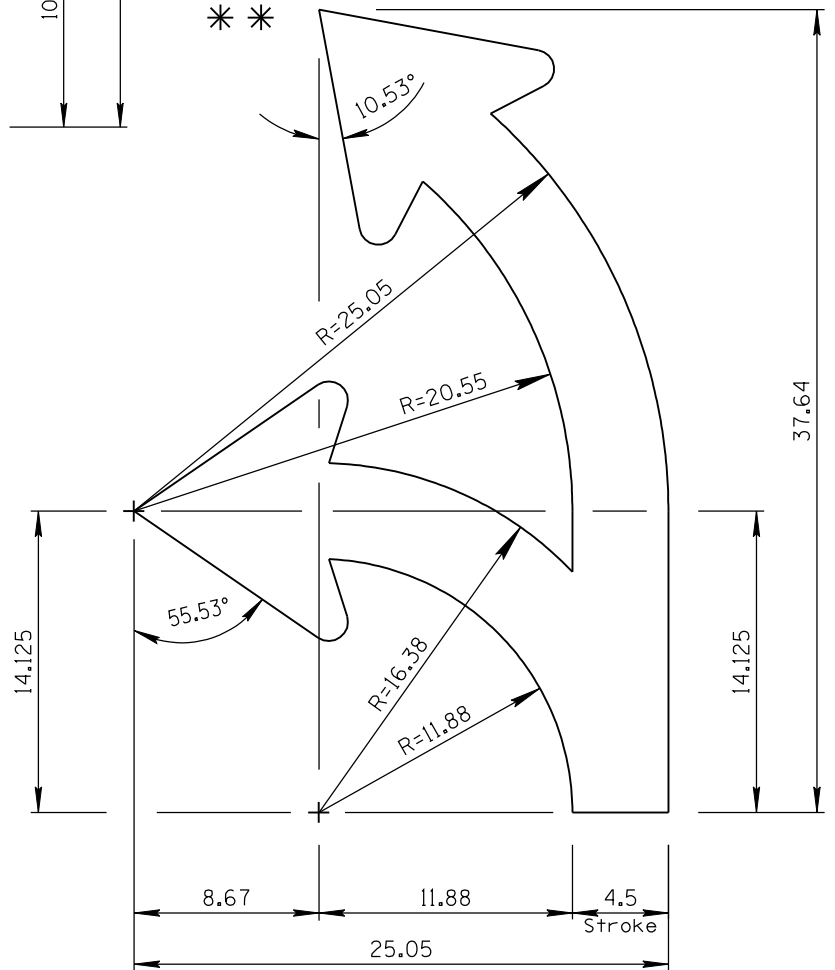
	<b>COLORS:</b> ARROW GRAPHICS & BORDER - BLACK (NON-REFL) BACKGROUND - WHITE (REFL)	ARIZONA DEPARTMENT OF TRANSPORTATION TRAFFIC ENGINEERING GROUP	
		DRAWN: <p style="text-align: center;">L. LOPEZ</p>	DATE: <p style="text-align: center;">JULY / 2015</p>
		APPROVED: <p style="text-align: center;">SIGNATURE ON FILE</p>	

ARROW CODE: J & P

Mirror for  
P Arrow  
3.5" & 4.5"  
Stroke



3.5" Stroke



4.5" Stroke

\*\* For arrowhead dimensions, see  
ADOT STANDARD ARROW HEAD DETAILS.

All dimensions are in inches. Length  
and width dimensions can be rounded  
to the nearest 1/8 inch.

ARIZONA DEPARTMENT OF TRANSPORTATION  
TRAFFIC ENGINEERING GROUP

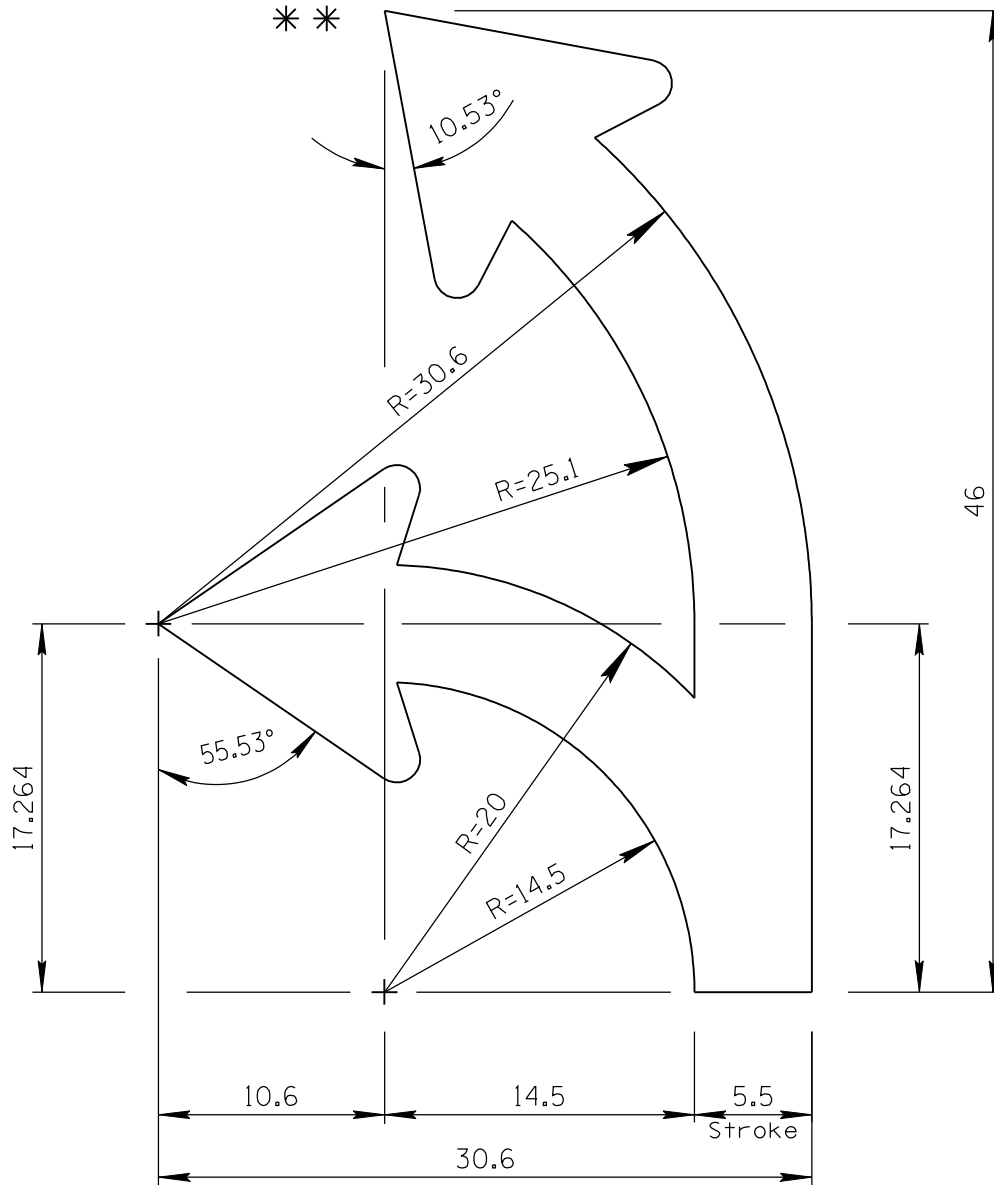
DRAWN:

L. LOPEZ

DATE:

JULY/2015

ARROW CODE: J & P  
 Mirror for  
 P Arrow  
 5.5"  
 Stroke



5.5" Stroke

\*\* For arrowhead dimensions, see  
 ADOT STANDARD ARROW HEAD DETAILS.

All dimensions are in inches. Length  
 and width dimensions can be rounded  
 to the nearest 1/8 inch.

ARIZONA DEPARTMENT OF TRANSPORTATION  
 TRAFFIC ENGINEERING GROUP

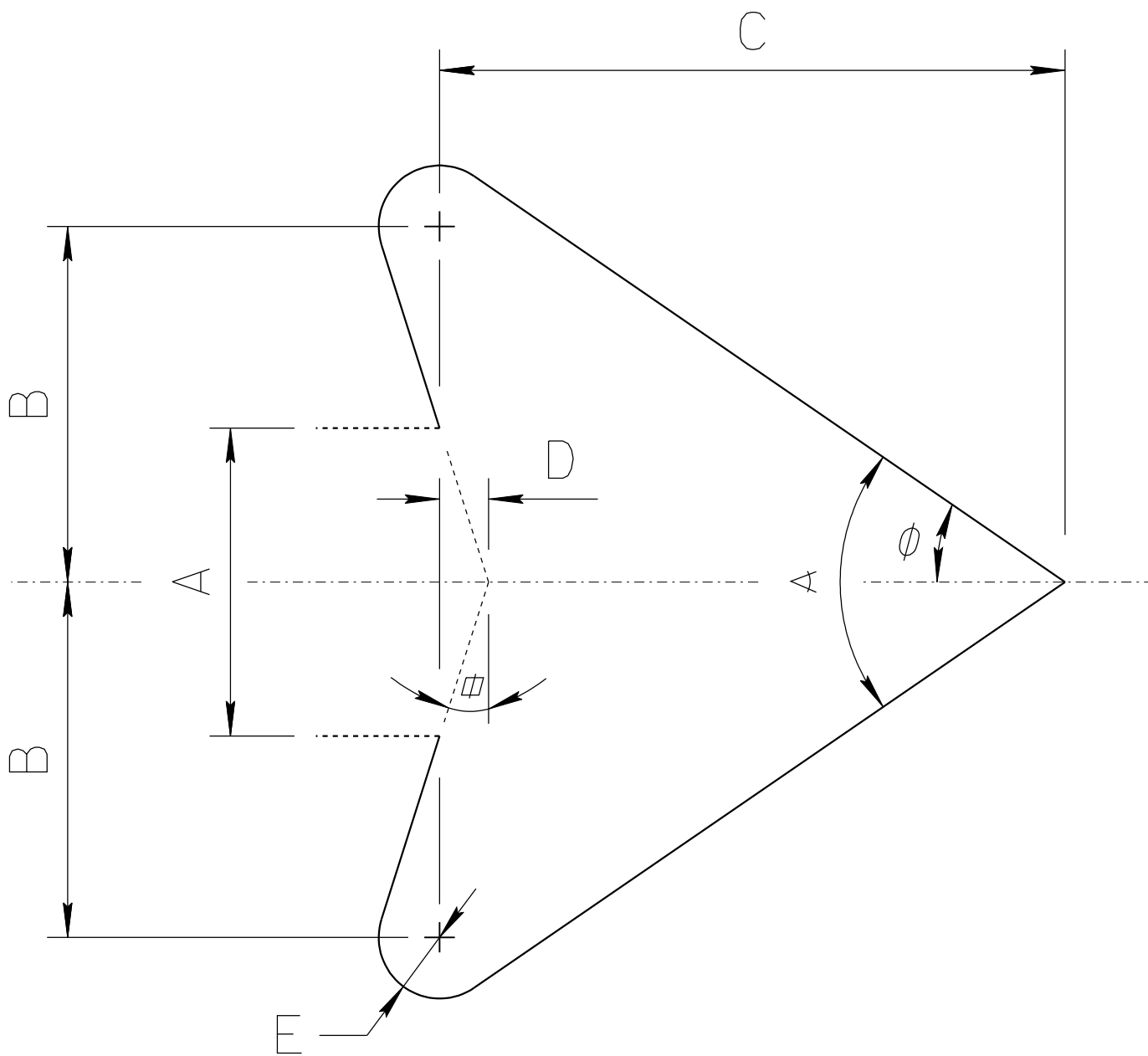
DRAWN:

L. LOPEZ

DATE:

JULY/2015

# ADOT STANDARD ARROW HEAD DETAILS



$A = \text{Arrow Shaft Stroke Width}$

$B = 1.15 \times A$

$C = 2.025 \times A$

$D = 0.16169 \times A$

$E = 0.2 \times A$

$\alpha = 17.92^\circ$

$\phi = 34.519^\circ$

$\alpha = 68.038^\circ$

ARIZONA DEPARTMENT OF TRANSPORTATION  
TRAFFIC ENGINEERING GROUP

DRAWN:

L. LOPEZ

DATE:

JULY/2015