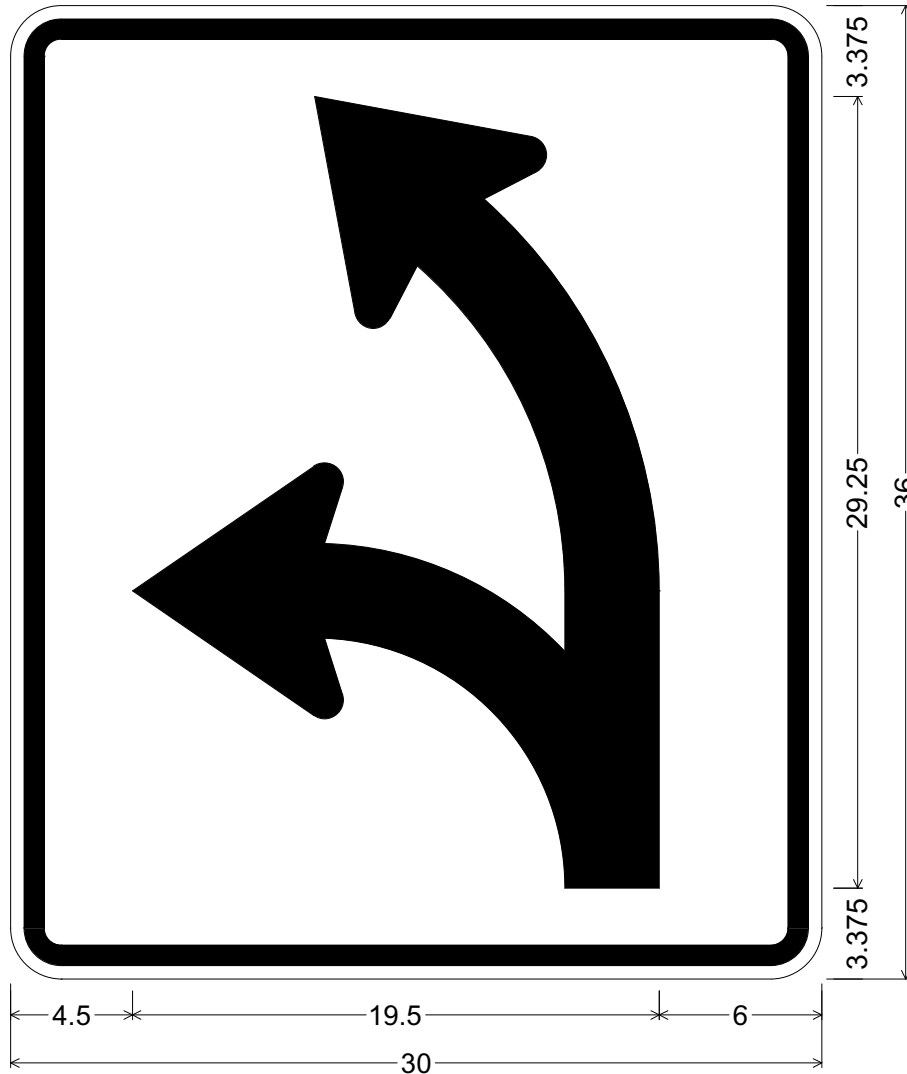


CODE: R3-6J

SIZE: 30" x 36"
STANDARD



R03-06J(30x36-STD)WHT;

1.875" Radius, 0.750" Border, 0.500" Indent, Black on White;

J - Arrow, 3.5" Stroke;

ALL DIMENSIONS ARE IN INCHES



COLORS:

ARROW GRAPHICS & BORDER - BLACK (NON-REFL)
BACKGROUND - WHITE (REFL)

ARIZONA DEPARTMENT OF TRANSPORTATION
TRAFFIC ENGINEERING GROUP

DRAWN:

L. LOPEZ

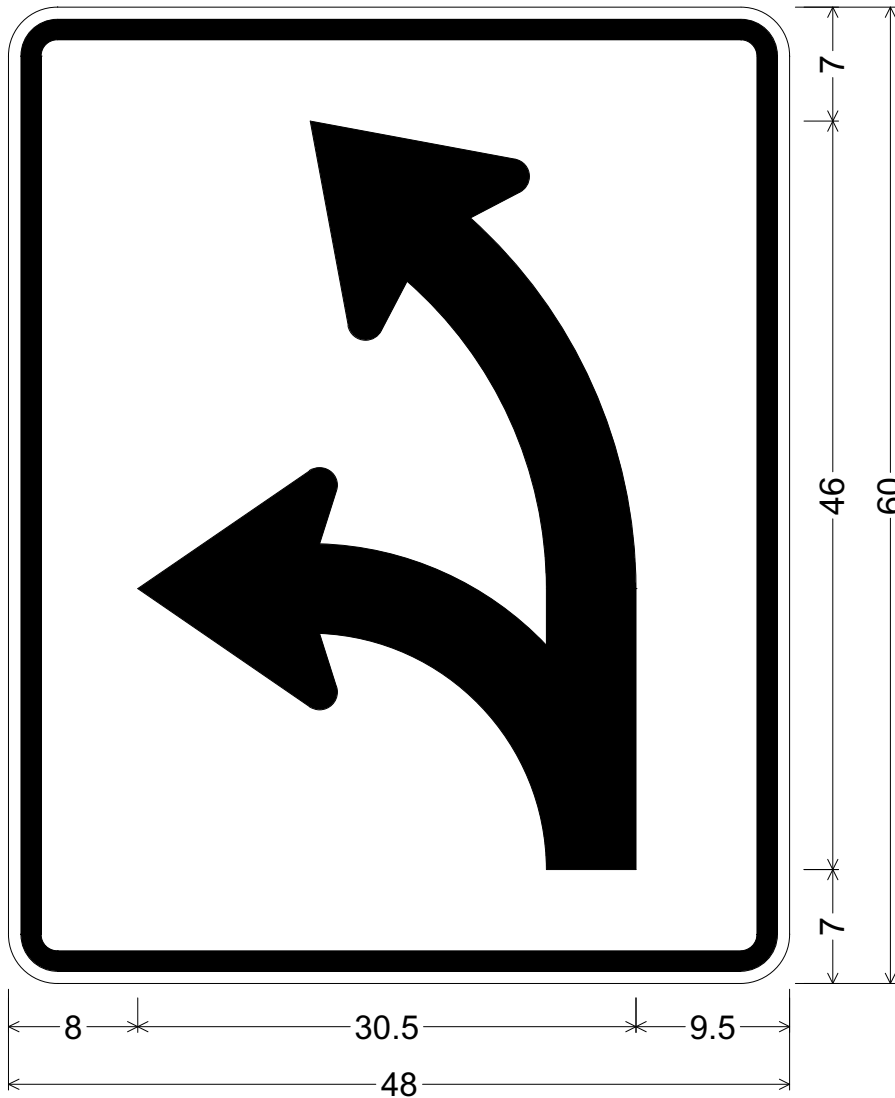
DATE:

JULY / 2015

APPROVED:


SIGNATURE ON FILE

CODE: R3-6J
 SIZE: 48" x 60"
 SPECIAL



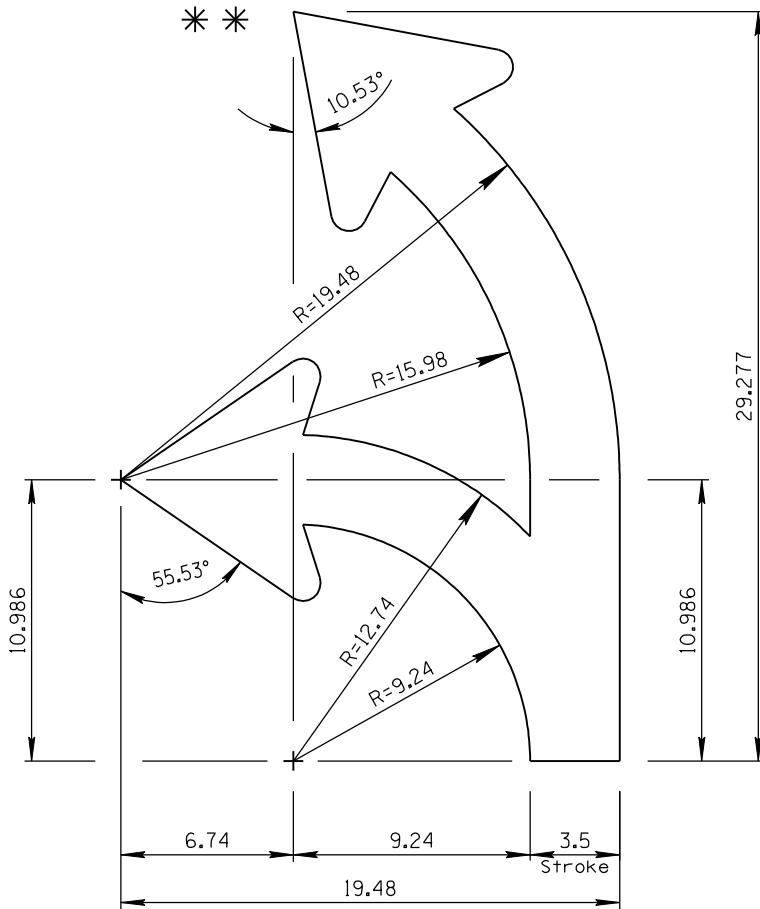
R03-06J(48x60-SPCL)WHT;
 3.000" Radius, 1.250" Border, 0.750" Indent, Black on White;
 J - Arrow, 5.5" Stroke;

ALL DIMENSIONS ARE IN INCHES

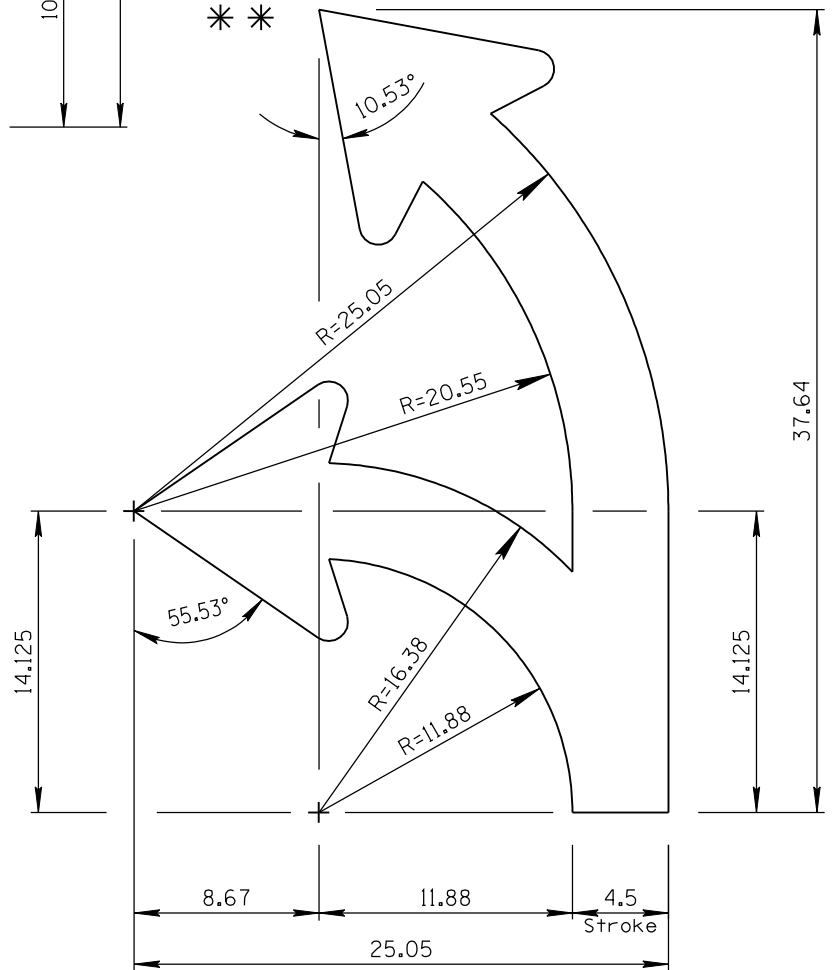
	COLORS: ARROW GRAPHICS & BORDER - BLACK (NON-REFL) BACKGROUND - WHITE (REFL)	ARIZONA DEPARTMENT OF TRANSPORTATION TRAFFIC ENGINEERING GROUP	
		DRAWN: <p style="text-align: center;">L. LOPEZ</p>	DATE: <p style="text-align: center;">JULY / 2015</p>
		APPROVED: <p style="text-align: center;">SIGNATURE ON FILE</p>	

ARROW CODE: J & P

Mirror for
P Arrow
3.5" & 4.5"
Stroke



3.5" Stroke



4.5" Stroke

** For arrowhead dimensions, see
ADOT STANDARD ARROW HEAD DETAILS.

All dimensions are in inches. Length
and width dimensions can be rounded
to the nearest 1/8 inch.

ARIZONA DEPARTMENT OF TRANSPORTATION
TRAFFIC ENGINEERING GROUP

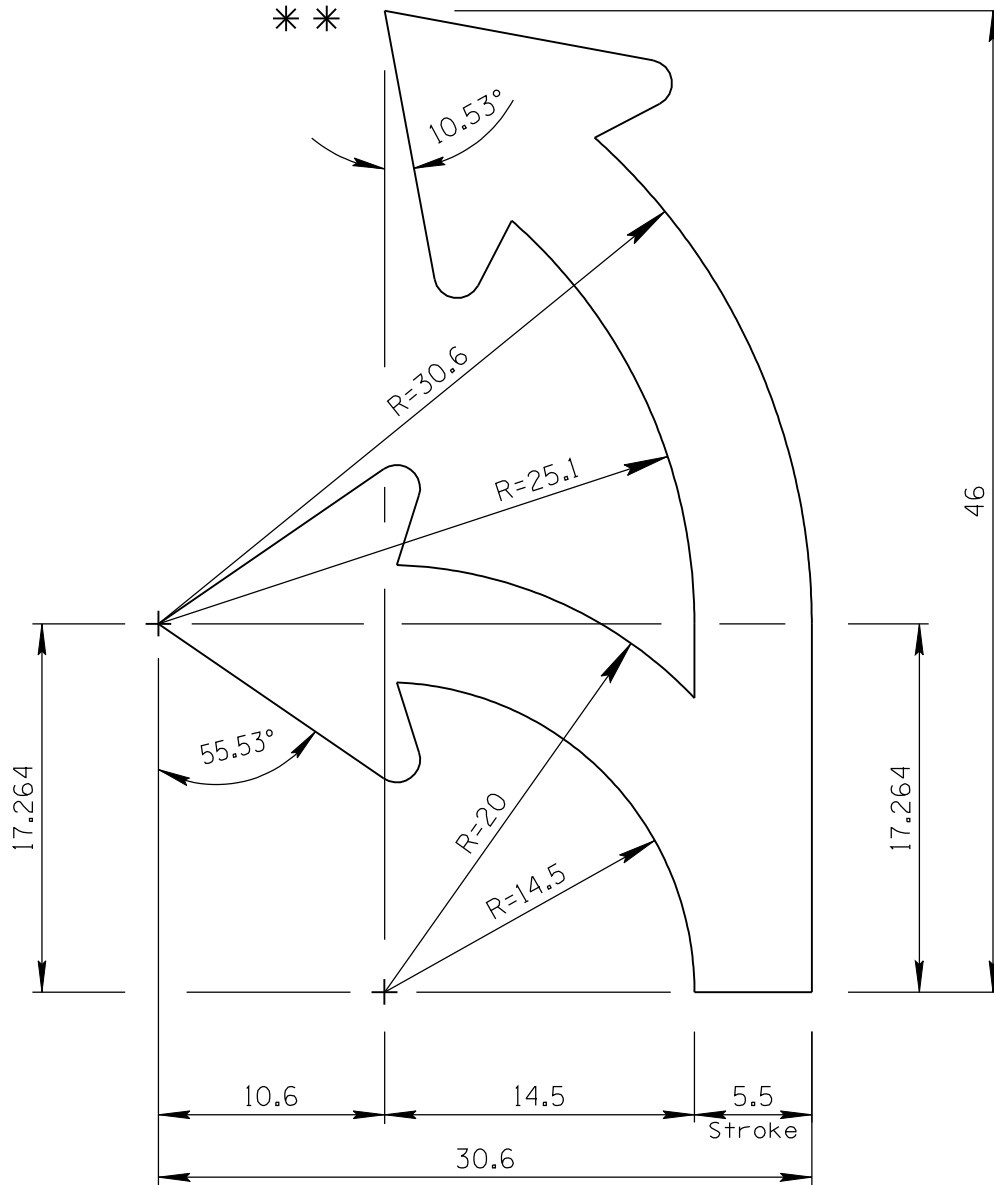
DRAWN:

L. LOPEZ

DATE:

JULY/2015

ARROW CODE: J & P
 Mirror for
 P Arrow
 5.5"
 Stroke



5.5" Stroke

** For arrowhead dimensions, see
 ADOT STANDARD ARROW HEAD DETAILS.

All dimensions are in inches. Length
 and width dimensions can be rounded
 to the nearest 1/8 inch.

ARIZONA DEPARTMENT OF TRANSPORTATION
 TRAFFIC ENGINEERING GROUP

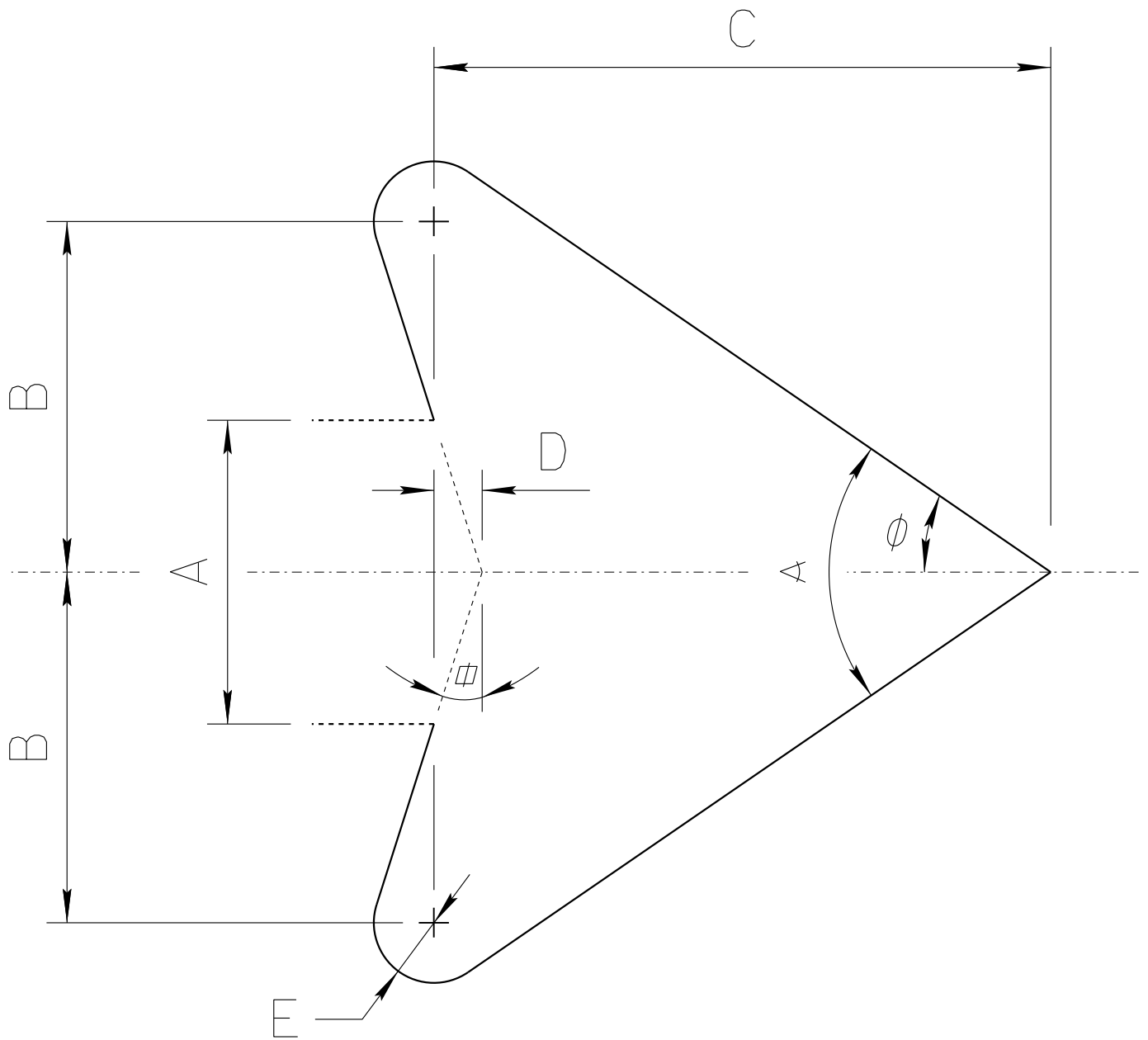
DRAWN:

L. LOPEZ

DATE:

JULY/2015

ADOT STANDARD ARROW HEAD DETAILS



$A =$ Arrow Shaft Stroke Width

$B = 1.15 \times A$

$C = 2.025 \times A$

$D = 0.16169 \times A$

$E = 0.2 \times A$

$\phi = 17.92^\circ$

$\alpha = 34.519^\circ$

$\sphericalangle = 69.038^\circ$

ARIZONA DEPARTMENT OF TRANSPORTATION
TRAFFIC ENGINEERING GROUP

DRAWN:

L. LOPEZ

DATE:

AUGUST/2019