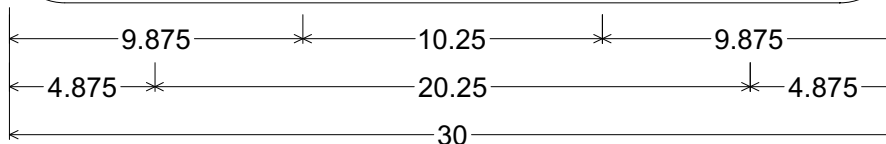


CODE: R3-5a  
 SIZE: 30" x 36"  
 STANDARD



R03-05a(30x36-STD)WHT;  
 1.875" Radius, 0.750" Border, 0.500" Indent, Black on White;  
 S - Arrow, 3.75" Stroke; "ONLY" D;

ALL DIMENSIONS ARE IN INCHES

	<b>COLORS:</b> ARROW, LEGEND & BORDER - BLACK (NON-REFL) BACKGROUND - WHITE (REFL)	ARIZONA DEPARTMENT OF TRANSPORTATION TRAFFIC ENGINEERING GROUP	
		DRAWN: L. LOPEZ	DATE: JULY / 2015
		APPROVED: SIGNATURE ON FILE	

CODE: R3-5a

SIZE: 48" x 60"  
SPECIAL



R03-05a(48x60-SPCL)WHT;

3.000" Radius, 1.250" Border, 0.750" Indent, Black on White;

S - Arrow, 6" Stroke; "ONLY" D;

ALL DIMENSIONS ARE IN INCHES



**COLORS:**

ARROW, LEGEND & BORDER - BLACK (NON-REFL)  
BACKGROUND - WHITE (REFL)

ARIZONA DEPARTMENT OF TRANSPORTATION  
TRAFFIC ENGINEERING GROUP

DRAWN:

L. LOPEZ

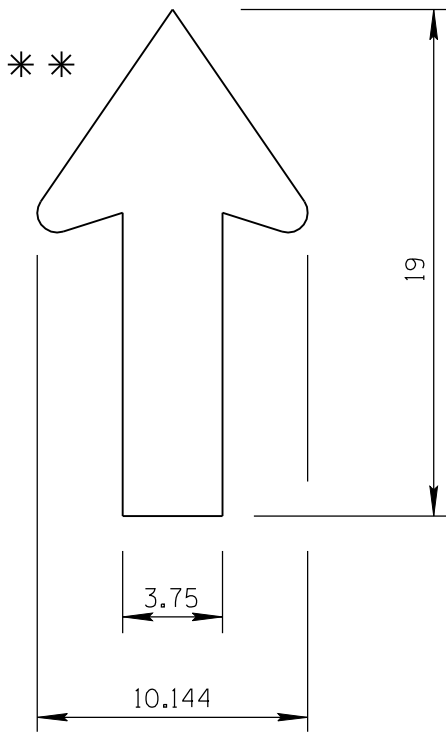
DATE:

JULY / 2015

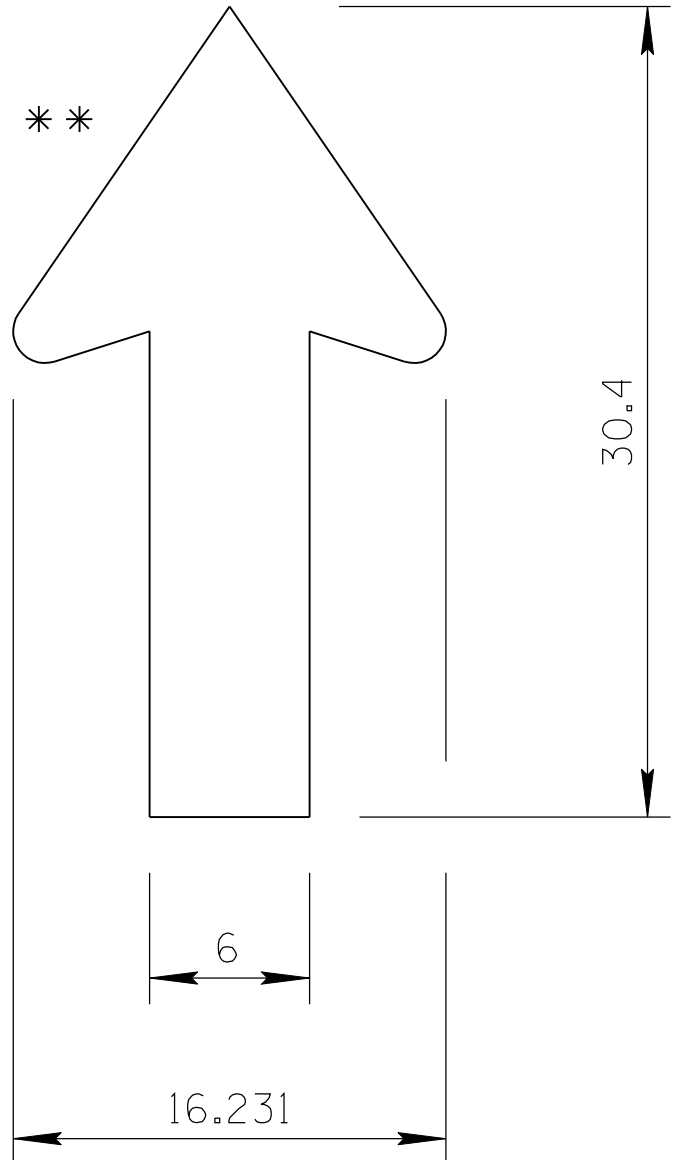
APPROVED:

SIGNATURE ON FILE

ARROW CODE: S  
3.75" & 6"  
Stroke



3.75" Stroke



6" Stroke

\*\* For arrowhead dimensions, see  
ADOT STANDARD ARROW HEAD DETAILS.

All dimensions are in inches. Length  
and width dimensions can be rounded  
to the nearest 1/8 inch.

ARIZONA DEPARTMENT OF TRANSPORTATION  
TRAFFIC ENGINEERING GROUP

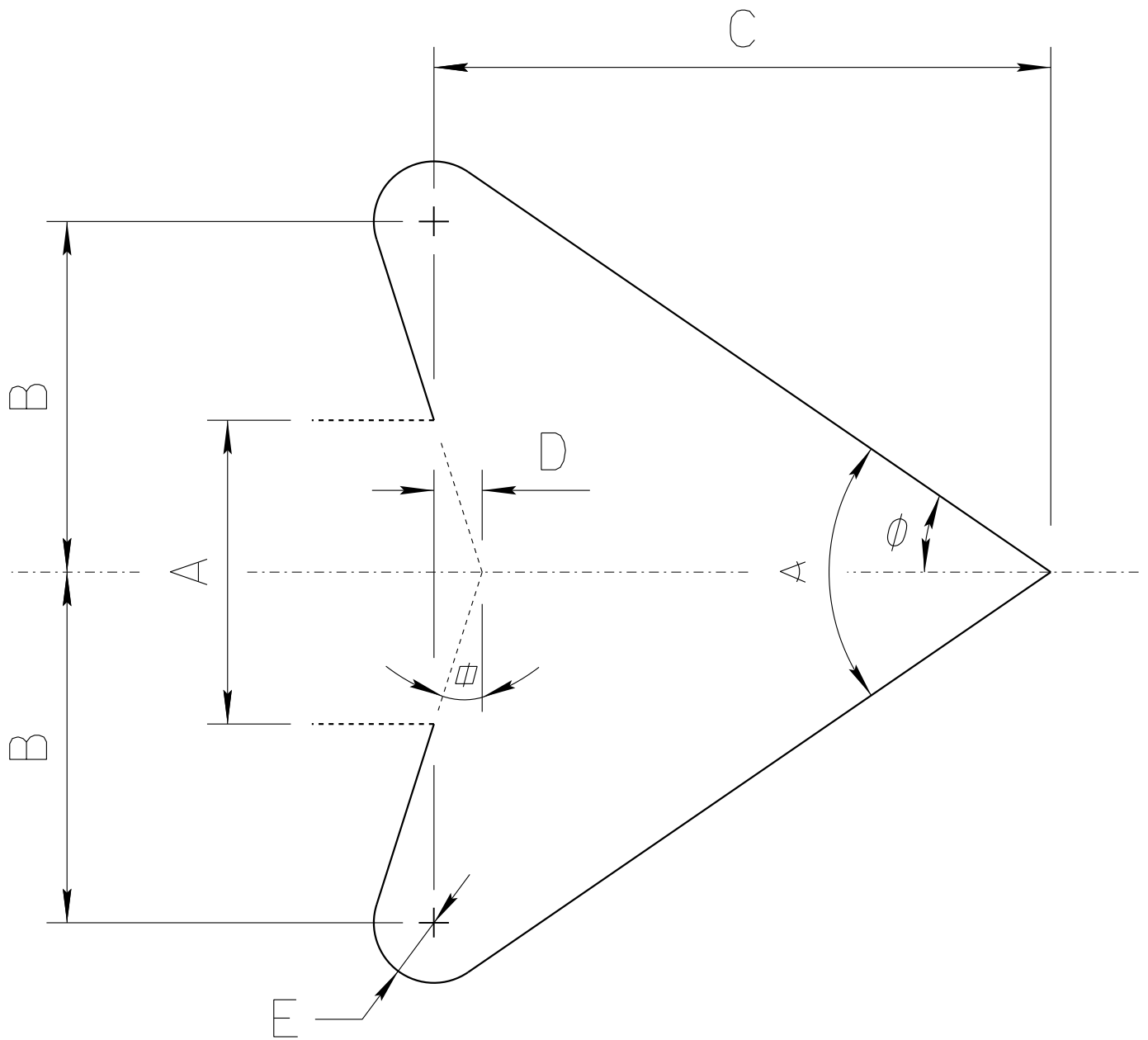
DRAWN:

L. LOPEZ

DATE:

JULY/2015

# ADOT STANDARD ARROW HEAD DETAILS



$A =$  Arrow Shaft Stroke Width

$B = 1.15 \times A$

$C = 2.025 \times A$

$D = 0.16169 \times A$

$E = 0.2 \times A$

$\phi = 17.92^\circ$

$\phi = 34.519^\circ$

$\alpha = 69.038^\circ$

ARIZONA DEPARTMENT OF TRANSPORTATION  
TRAFFIC ENGINEERING GROUP

DRAWN:

L. LOPEZ

DATE:

AUGUST/2019