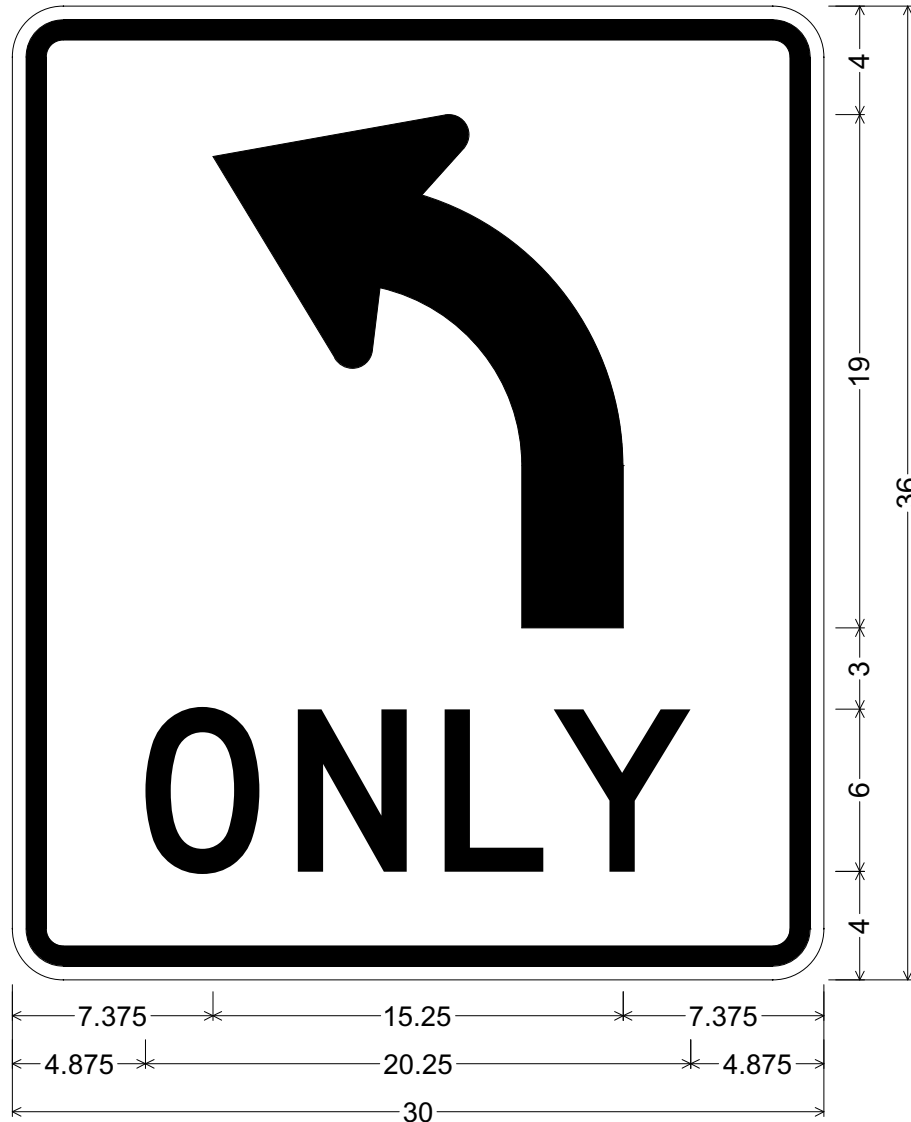


CODE: R3-5L
 SIZE: 30" x 36"
 STANDARD



R03-05L(30x36-STD)WHT;
 1.875" Radius, 0.750" Border, 0.500" Indent, Black on White;
 L - Arrow, 3.75" Stroke; "ONLY" D;

ALL DIMENSIONS ARE IN INCHES



COLORS:

ARROW, LEGEND & BORDER - BLACK (NON-REFL)
 BACKGROUND - WHITE (REFL)

ARIZONA DEPARTMENT OF TRANSPORTATION
 TRAFFIC ENGINEERING GROUP

DRAWN:

L. LOPEZ

DATE:

JULY / 2015

APPROVED:

SIGNATURE ON FILE

CODE: R3-5L

SIZE: 48" x 60"
SPECIAL



R03-05L(48x60-SPCL)WHT;
3.000" Radius, 1.250" Border, 0.750" Indent, Black on White;
L - Arrow, 6" Stroke; "ONLY" D;

ALL DIMENSIONS ARE IN INCHES



COLORS:

ARROW, LEGEND & BORDER - BLACK (NON-REFL)
BACKGROUND - WHITE (REFL)

ARIZONA DEPARTMENT OF TRANSPORTATION
TRAFFIC ENGINEERING GROUP

DRAWN:

L. LOPEZ

DATE:

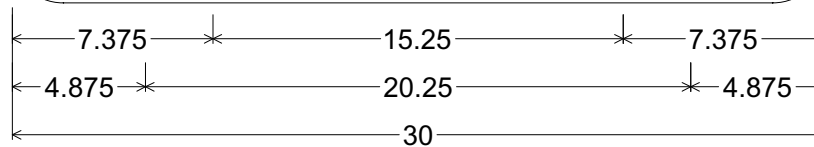
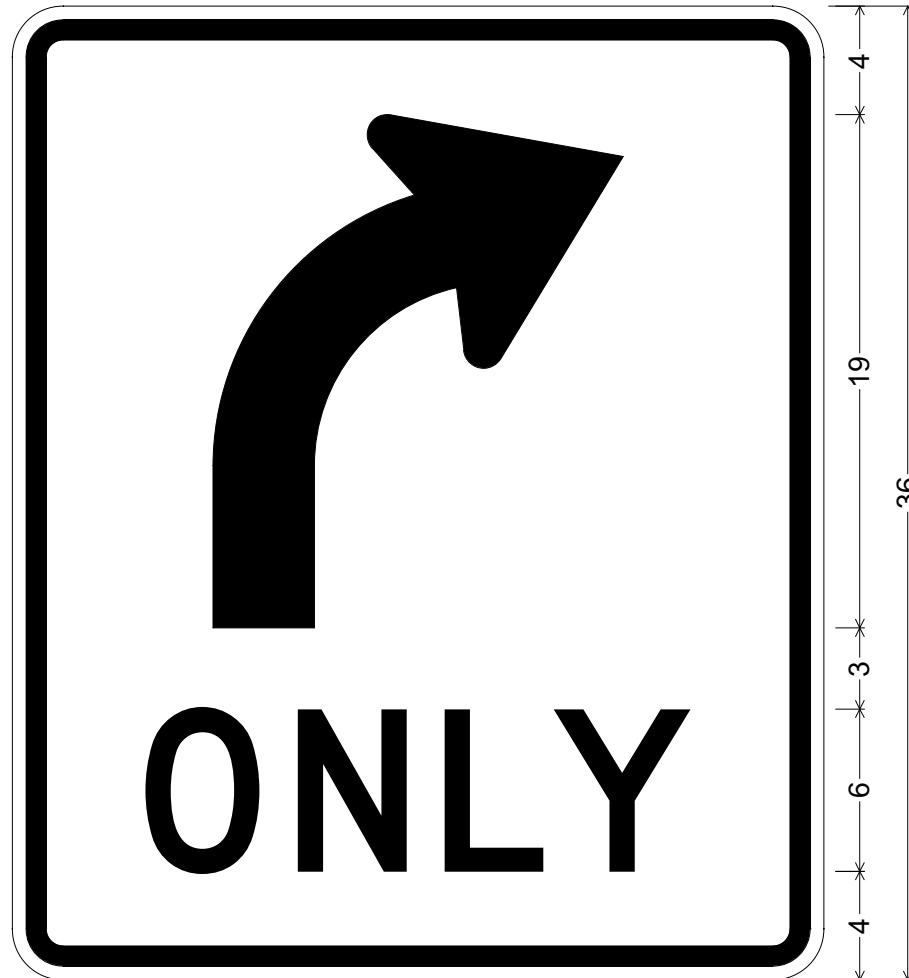
JULY / 2015

APPROVED:

SIGNATURE ON FILE

CODE: R3-5R

SIZE: 30" x 36"
STANDARD



R03-05R(30x36-STD)WHT;

1.875" Radius, 0.750" Border, 0.500" Indent, Black on White;

R - Arrow, 3.75" Stroke; "ONLY" D;

ALL DIMENSIONS ARE IN INCHES



COLORS:

ARROW, LEGEND & BORDER - BLACK (NON-REFL)
BACKGROUND - WHITE (REFL)

ARIZONA DEPARTMENT OF TRANSPORTATION
TRAFFIC ENGINEERING GROUP

DRAWN:

L. LOPEZ

DATE:

JULY / 2015

APPROVED:

SIGNATURE ON FILE

CODE: R3-5R

SIZE: 48" x 60"
SPECIAL



R03-05R(48x60-SPCL)WHT;
3.000" Radius, 1.250" Border, 0.750" Indent, Black on White;
L - Arrow, 6" Stroke; "ONLY" D;

ALL DIMENSIONS ARE IN INCHES



COLORS:

ARROW, LEGEND & BORDER - BLACK (NON-REFL)
BACKGROUND - WHITE (REFL)

ARIZONA DEPARTMENT OF TRANSPORTATION
TRAFFIC ENGINEERING GROUP

DRAWN:

L. LOPEZ

DATE:

JULY / 2015

APPROVED:

SIGNATURE ON FILE

CODE: R3-5L (for R3-9i)

SIZE: 29" x 35"



R3-5L (for R3-9i);
1.375" Radius, 0.750" Border, Black on White;
L - Arrow, 3.75" Stroke; "ONLY" D;

ALL DIMENSIONS ARE IN INCHES



COLORS:

ARROW, LEGEND & BORDER - BLACK (NON-REFL)
BACKGROUND - WHITE (REFL)

ARIZONA DEPARTMENT OF TRANSPORTATION
TRAFFIC ENGINEERING GROUP

DRAWN:

L. LOPEZ

DATE:

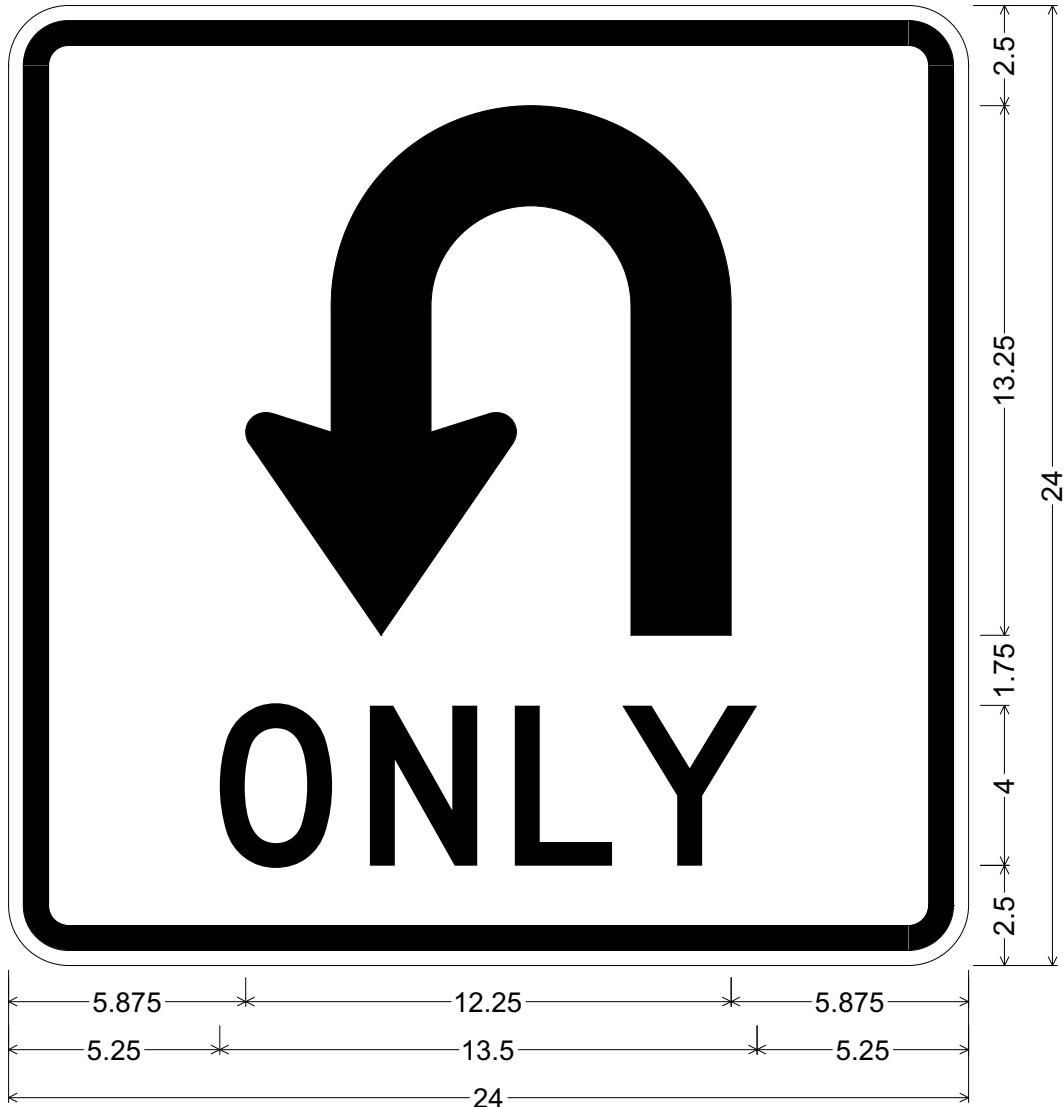
JULY / 2015

APPROVED:

SIGNATURE ON FILE

CODE: R3-5U

SIZE: 24" x 24"
MINIMUM



R03-05U(24x24-MIN)WHT;

1.500" Radius, 0.625" Border, 0.375" Indent, Black on White;

U - Arrow, 2.5" Stroke; "ONLY" D;

ALL DIMENSIONS ARE IN INCHES



COLORS:

ARROW, LEGEND & BORDER - BLACK (NON-REFL)
BACKGROUND - WHITE (REFL)

ARIZONA DEPARTMENT OF TRANSPORTATION
TRAFFIC ENGINEERING GROUP

DRAWN:

LARRY LOPEZ

DATE:

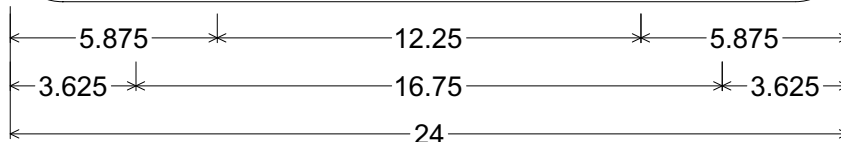
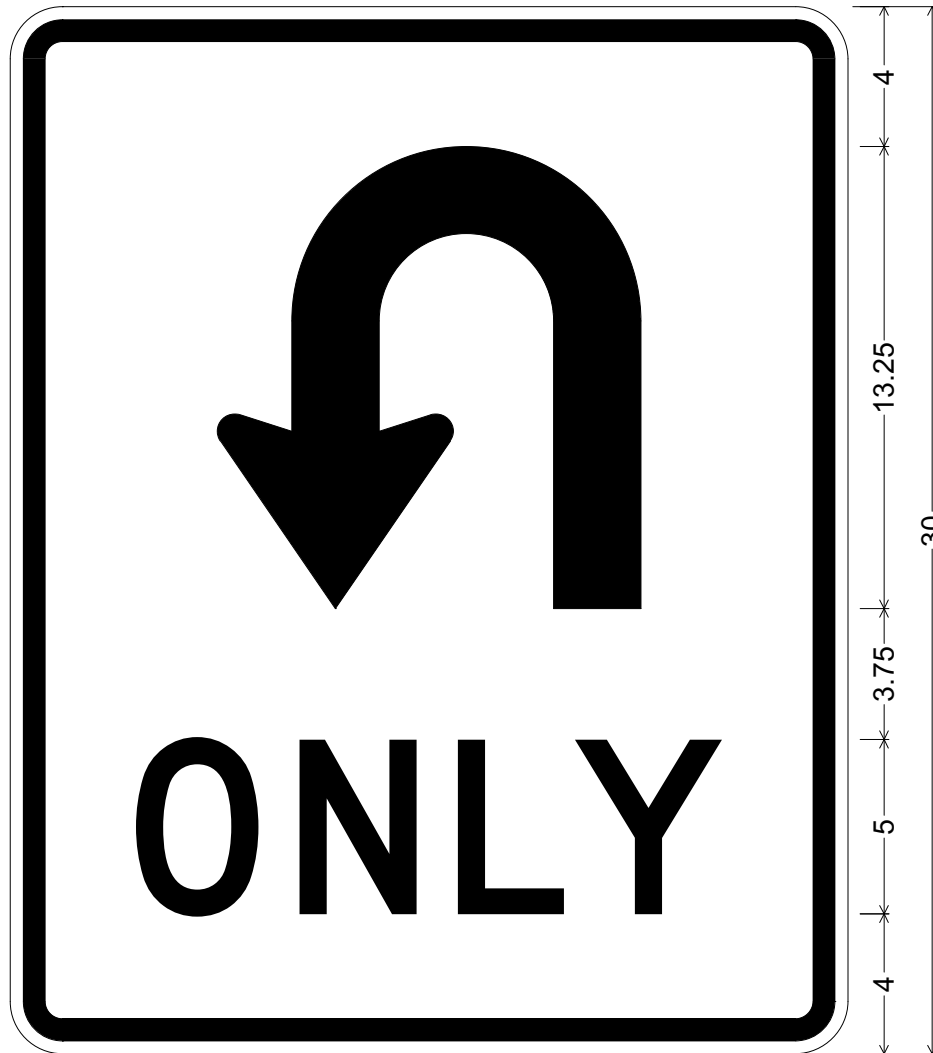
JULY / 2015

APPROVED:

SIGNATURE ON FILE

CODE: R3-5U

SIZE: 24" x 30"
STANDARD



R03-05U(24x30-STD)WHT;

1.500" Radius, 0.625" Border, 0.375" Indent, Black on White;

U - Arrow, 2.5" Stroke; "ONLY" D;

ALL DIMENSIONS ARE IN INCHES



COLORS:

ARROW, LEGEND & BORDER - BLACK (NON-REFL)
BACKGROUND - WHITE (REFL)

ARIZONA DEPARTMENT OF TRANSPORTATION
TRAFFIC ENGINEERING GROUP

DRAWN:

L. LOPEZ

DATE:

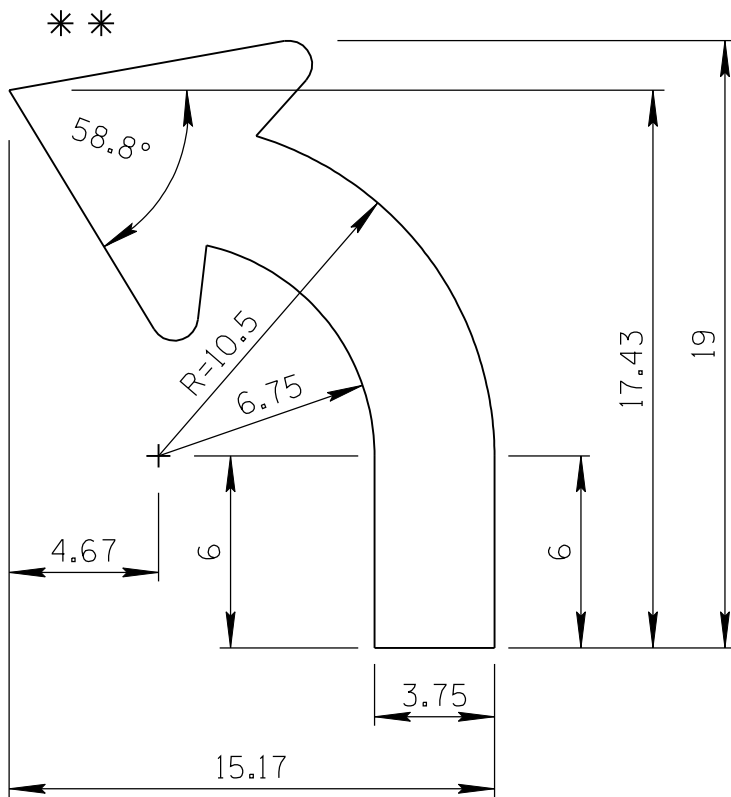
JULY / 2015

APPROVED:

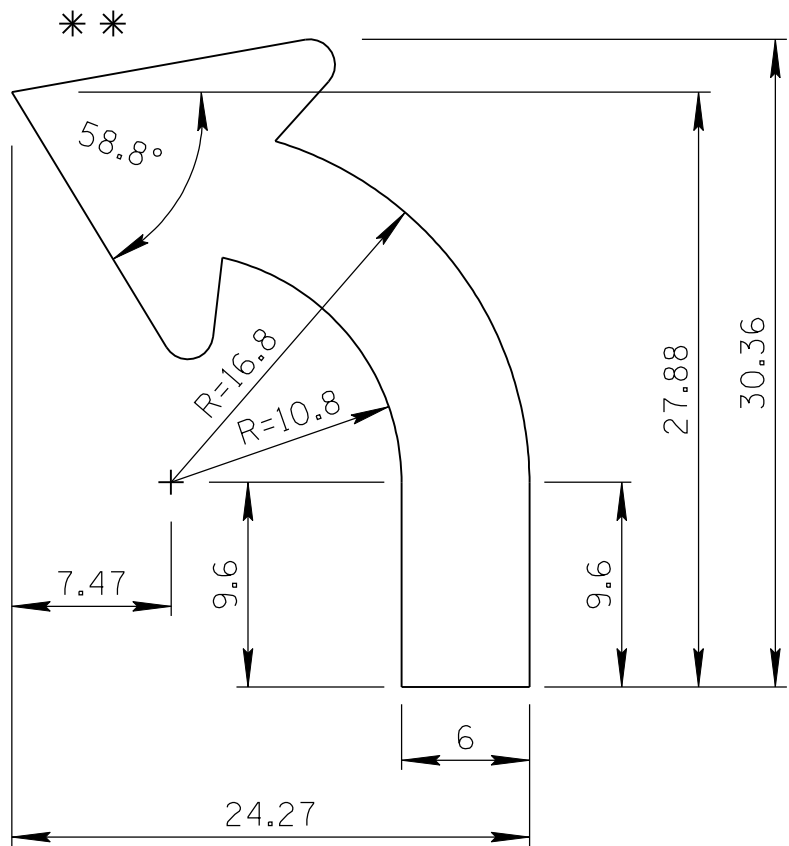
SIGNATURE ON FILE

ARROW CODE: L & R

Mirror for
R Arrow
3.75" & 6"
Stroke



3.75" Stroke



6" Stroke

** For arrowhead dimensions, see
ADOT STANDARD ARROW HEAD DETAILS.

All dimensions are in inches. Length
and width dimensions can be rounded
to the nearest 1/8 inch.

ARIZONA DEPARTMENT OF TRANSPORTATION
TRAFFIC ENGINEERING GROUP

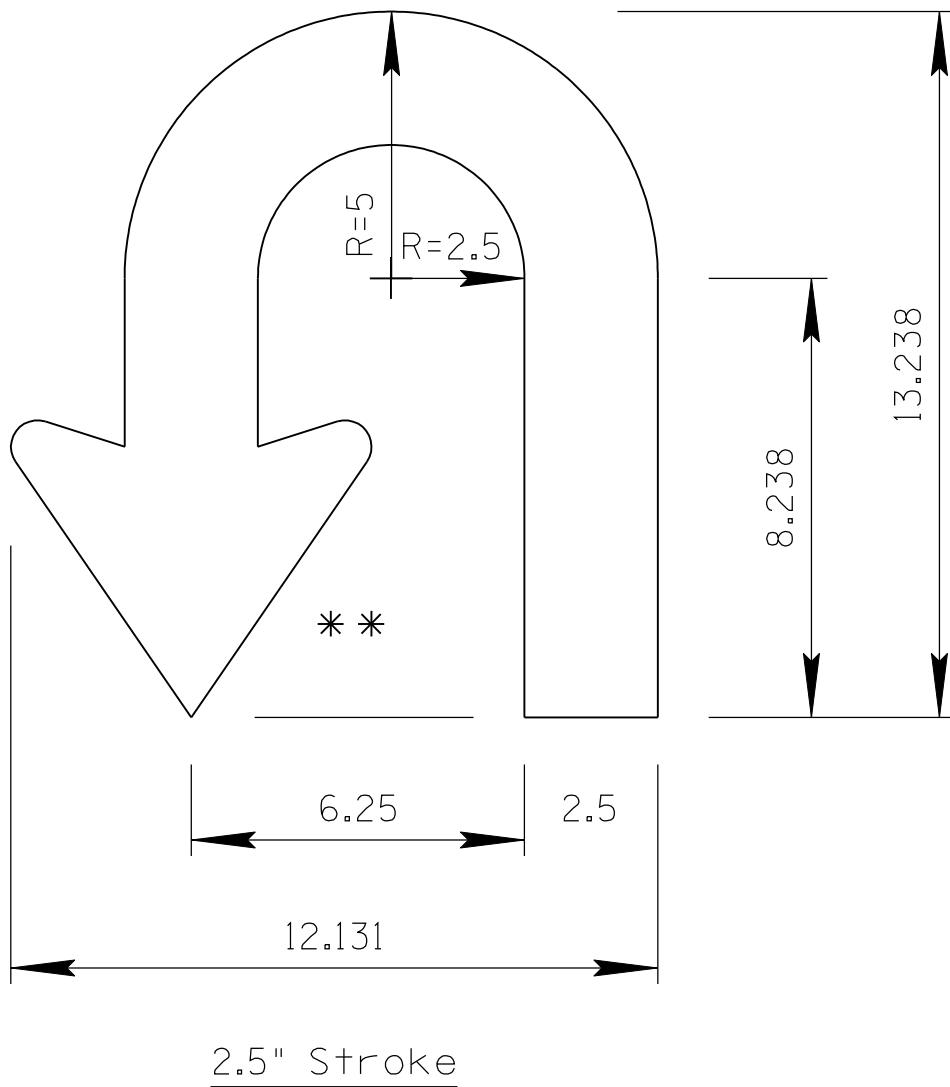
DRAWN:

L. LOPEZ

DATE:

JULY/2015

ARROW CODE: U
2.5"
Stroke



* * For arrowhead dimensions, see
ADOT STANDARD ARROW HEAD DETAILS.

All dimensions are in inches. Length
and width dimensions can be rounded
to the nearest 1/8 inch.

ARIZONA DEPARTMENT OF TRANSPORTATION
TRAFFIC ENGINEERING GROUP

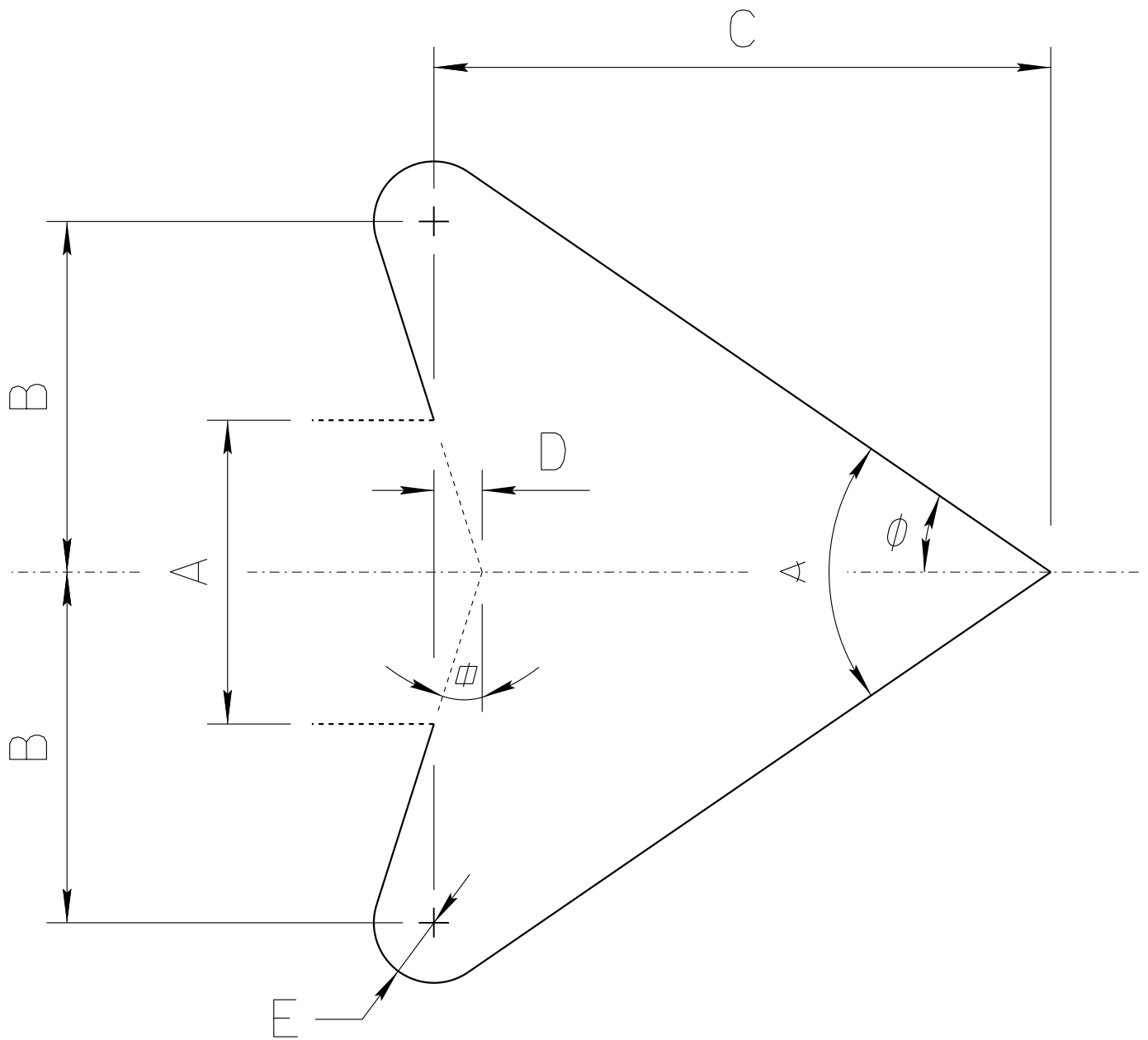
DRAWN:

L. LOPEZ

DATE:

JULY/2015

ADOT STANDARD ARROW HEAD DETAILS



$A = \text{Arrow Shaft Stroke Width}$

$B = 1.15 \times A$

$C = 2.025 \times A$

$D = 0.16169 \times A$

$E = 0.2 \times A$

$\phi = 17.92^\circ$

$\phi = 34.519^\circ$

$\alpha = 69.038^\circ$

ARIZONA DEPARTMENT OF TRANSPORTATION
TRAFFIC ENGINEERING GROUP

DRAWN:

L. LOPEZ

DATE:

AUGUST/2019