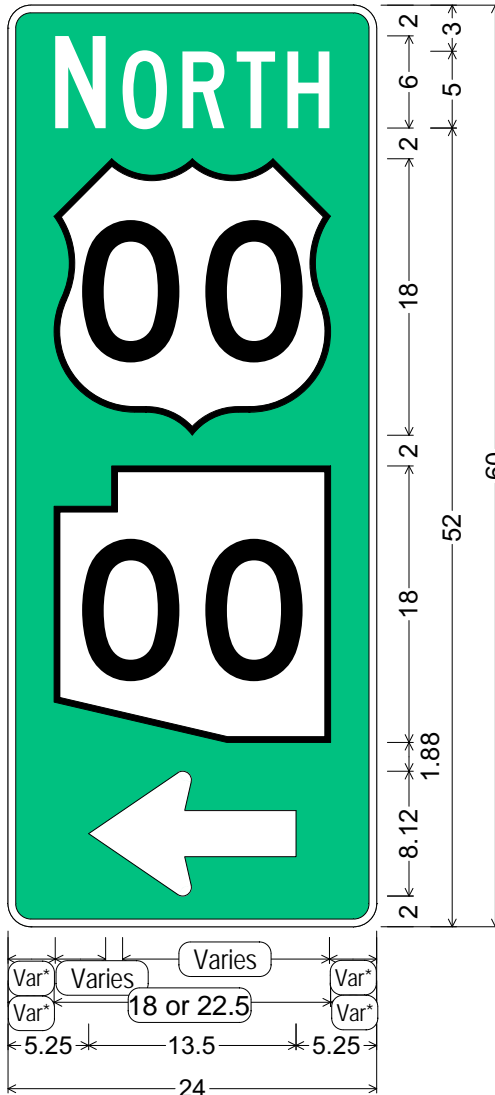


*Center all legend horizontally on panel.

CODE: M102-1a

SIZE: 24" x 60"
STANDARD

Use M102-1a for two routes with one cardinal direction.



M102-1a;
1.50" Radius, 0.50" Border, White on Green;
"NORTH" C 95% spacing;
US 00 M1-4c;
State Highway 00 M1-5c;
Arrow 6" Type D2 - 13.50" 180°;

ALL DIMENSIONS ARE IN INCHES



COLORS:

LEGEND & BORDER - WHITE (REFL)
BACKGROUND - GREEN (REFL)

ARIZONA DEPARTMENT OF TRANSPORTATION
TRAFFIC ENGINEERING GROUP

DRAWN:

R. C. MOEUR

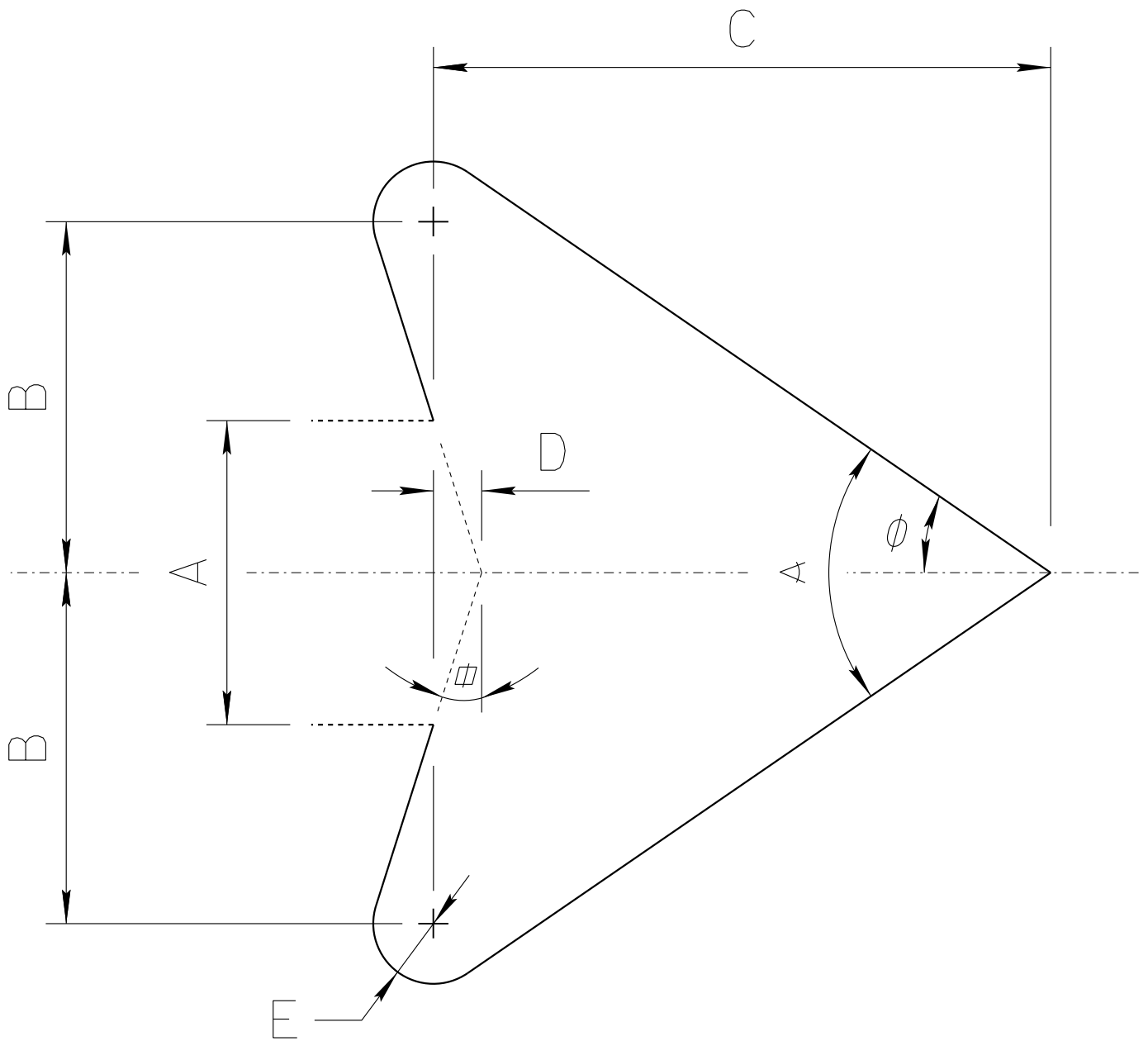
DATE:

DECEMBER / 2015

APPROVED:

SIGNATURE ON FILE

ADOT STANDARD ARROW HEAD DETAILS



$A =$ Arrow Shaft Stroke Width

$B = 1.15 \times A$

$C = 2.025 \times A$

$D = 0.16169 \times A$

$E = 0.2 \times A$

$\alpha = 17.92^\circ$

$\phi = 34.519^\circ$

$\angle = 69.038^\circ$

ARIZONA DEPARTMENT OF TRANSPORTATION
TRAFFIC ENGINEERING GROUP

DRAWN:

L. LOPEZ

DATE:

AUGUST/2019