



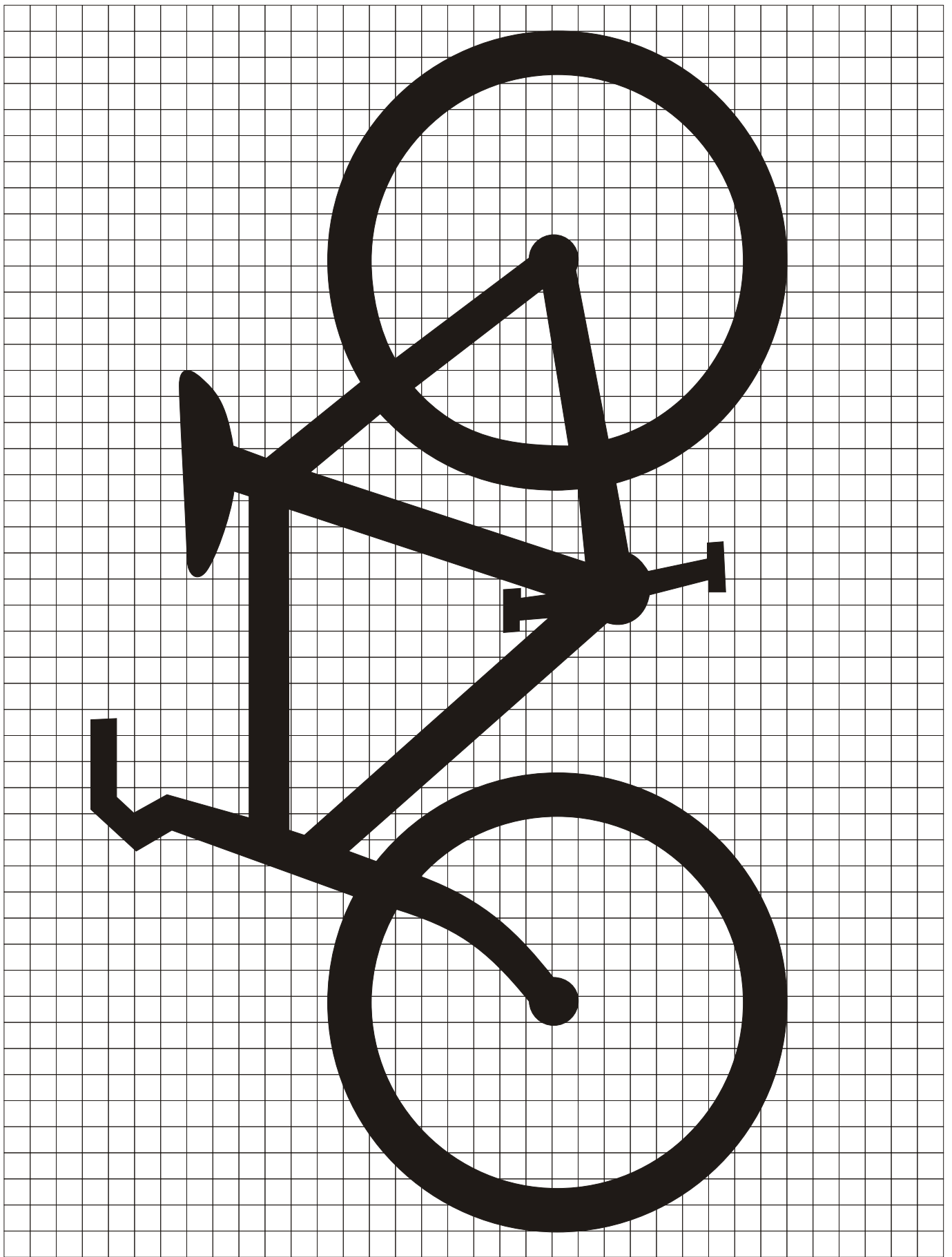
**M4-9c**  
BICYCLE DETOUR

\*Series 2000 Standard Alphabets.  
\*\*See page 6-7 for symbol design.  
Optically center symbol about centerline.

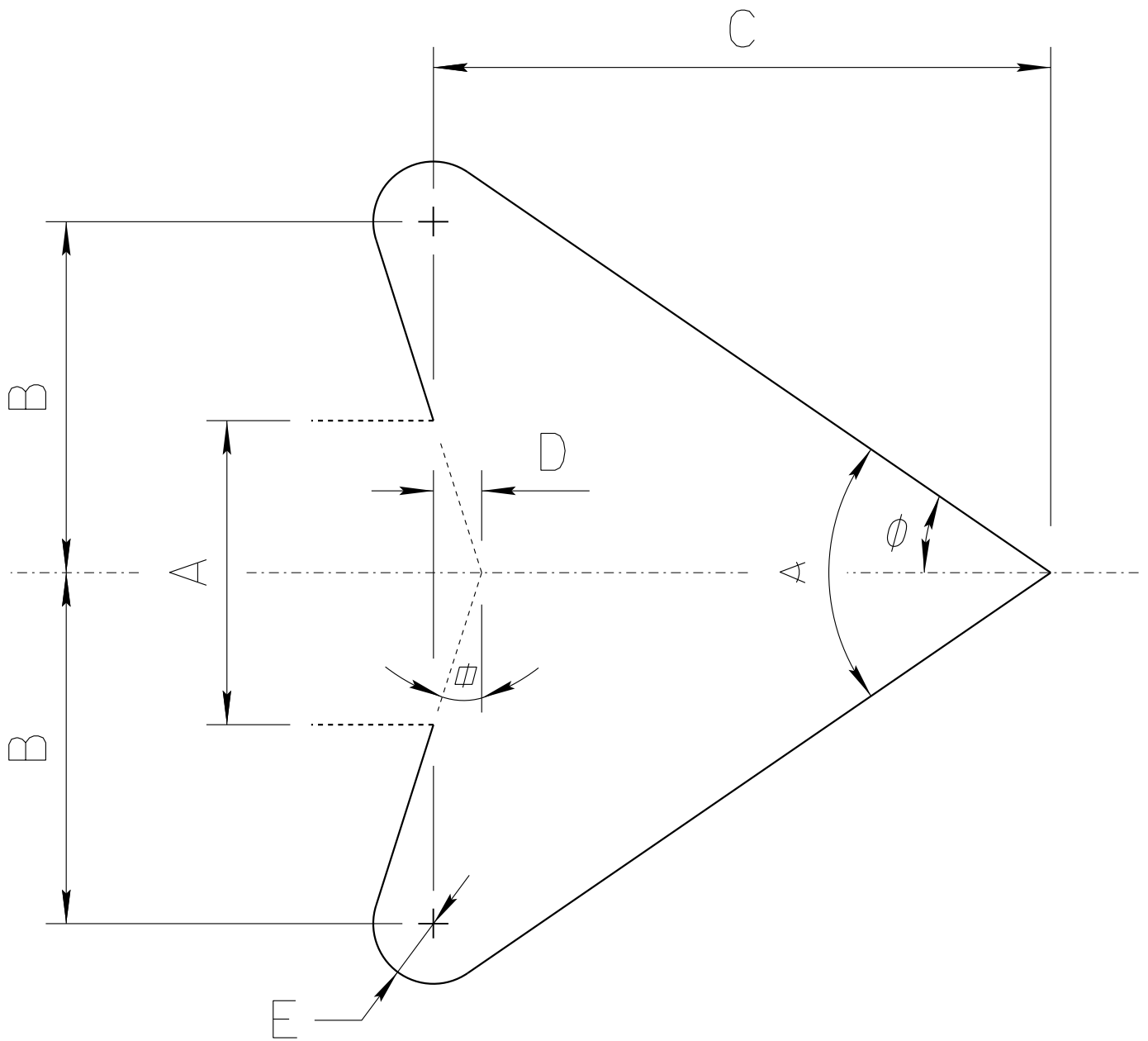
	A	B	C	D	E	F	G	H	J	K	L	M
<b>C</b>	30	24	.5	.75	10.207	5 D	3.802	5	12.169	7	2	5.324
	48	36	.75	1.25	15.291	8 D	5.924	6.805	19.454	11.208	3.202	8.086
	60	48	.75	1.25	20.615	10 D	7.405	10	24.318	10	4	6.925

N	P
9	1.875
13.530	3
16.812	3

TTC SIGN COLORS:  
LEGEND — BLACK  
BACKGROUND— ORANGE (RETROREFLECTIVE)



# ADOT STANDARD ARROW HEAD DETAILS



$A = \text{Arrow Shaft Stroke Width}$

$B = 1.15 \times A$

$C = 2.025 \times A$

$D = 0.16169 \times A$

$E = 0.2 \times A$

$\phi = 17.92^\circ$

$\alpha = 34.519^\circ$

$\sphericalangle = 69.038^\circ$

ARIZONA DEPARTMENT OF TRANSPORTATION  
TRAFFIC ENGINEERING GROUP

DRAWN:

L. LOPEZ

DATE:

AUGUST/2019