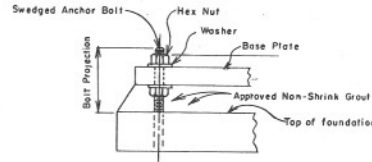
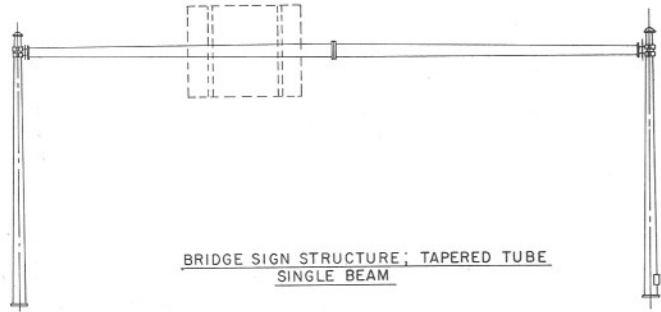
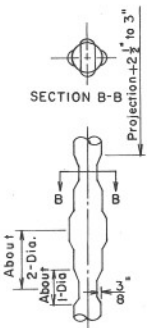


BRIDGE SIGN STRUCTURE; TAPERED TUBE
SINGLE BEAM



ANCHOR BOLT SETTING



ANCHOR BOLT SWEGGING

GENERAL NOTES

CONSTRUCTION: Arizona Highway Department Standard Specification.

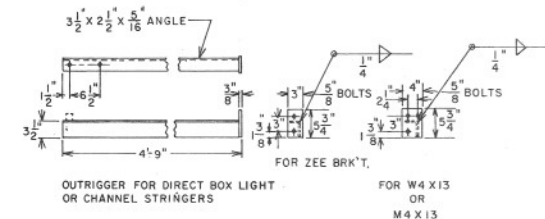
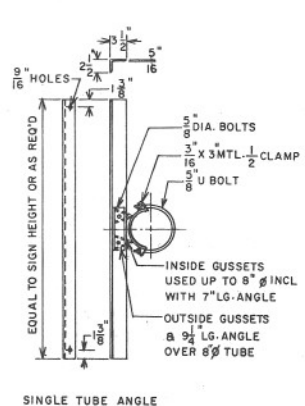
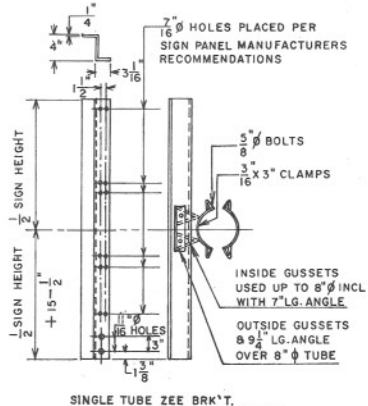
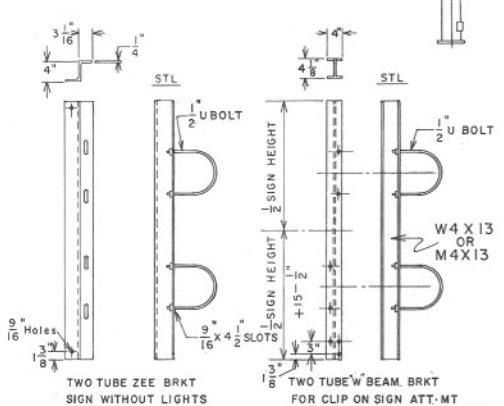
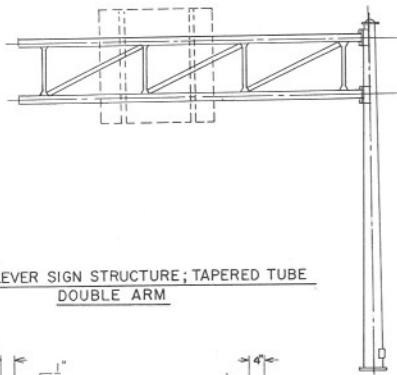
DESIGN:

Design Shall Conform to A.A.S.H.O. Specifications for the Design and Construction of Structural Supports for Highway Signs, 1968. The Dead Load Deflection Requirements in Section 7a are Waived for Short Span Single Tapered Tube Structures. Reinforcing Steel Shall be Intermediate Grade and Conform to the Requirements of A.S.T.M. A615, Grade 40. All Welding Shall Conform to Arizona Highway Department Specifications. All Sign Supports Shall be Set True and Plum. See Plans for Specific Locations. Tapered Tubes Shall Conform to the Requirements of A.S.T.M. A-595 Grade A. All Structural Steel and Anchor Bolts Shall Conform to the Requirements of A.S.T.M. A-36 Unless otherwise noted. Connection Bolts Shall Conform to the Requirements of A.S.T.M. A-325. All Bolts, Nuts, & Washers other than High Strength Bolts and Anchor Bolts Shall be Zinc or Cadmium Plated.

Paint and Painting Shall Conform to Arizona Highway Department Specs. Structural Steel Shall be Painted with three (3) Coats of Paint
1st Coat; Arizona Highway Department #1
2nd Coat Arizona Highway Department #2
3rd Coat Arizona Highway Department #3

The Inside of Tapered Tubes Shall be Painted with one (1) Coat of Arizona Highway Department Standard #1 Red Lead Prime Coat Applied at the Sign Structure Fabrication Plant will be an Acceptable Substitution for Arizona Highway Department #1 Sign and Lighting Support Brackets May be Galvanized in Lieu of Painting. Galvanizing Shall Conform to the Requirements of A.S.T.M. A-123. Vertical Clearance Shall be 18'-0" Above High Point on Roadway. Tube Dimension and Shape Shown on Plans are Nominal. All Foundation Concrete shall be Class S (fc 2500).

CANTILEVER SIGN STRUCTURE; TAPERED TUBE
DOUBLE ARM



DESIGN APPROVED <i>Leslie Brown</i> 6/1/70	STATE OF ARIZONA DEPARTMENT OF TRANSPORTATION DIVISION OF HIGHWAYS STANDARD DRAWINGS	REV. 1/83
APPROVED FOR DISTRIBUTION <i>P. J. Smith</i>	TAPERED TUBE SIGN STRUCTURE	DRAWING NO. 4-S-5.01