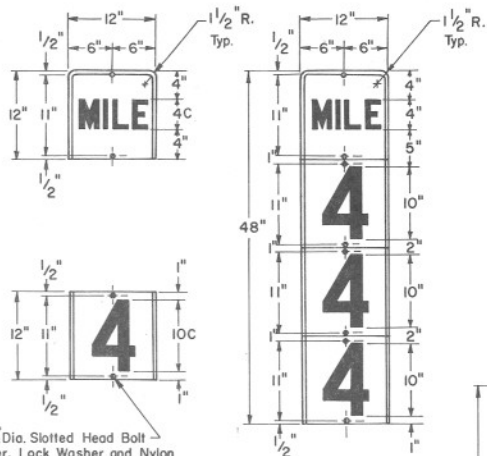


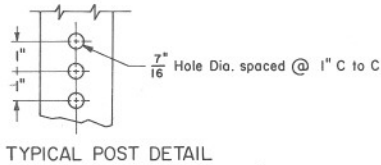
STANDARD NUMERAL POSITION

NOTE: All Letters are 4" Series "C"  
All Numerals are 10" Series "C"

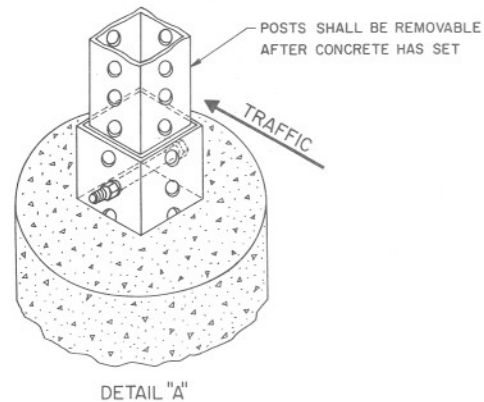


TYPICAL MILEPOST

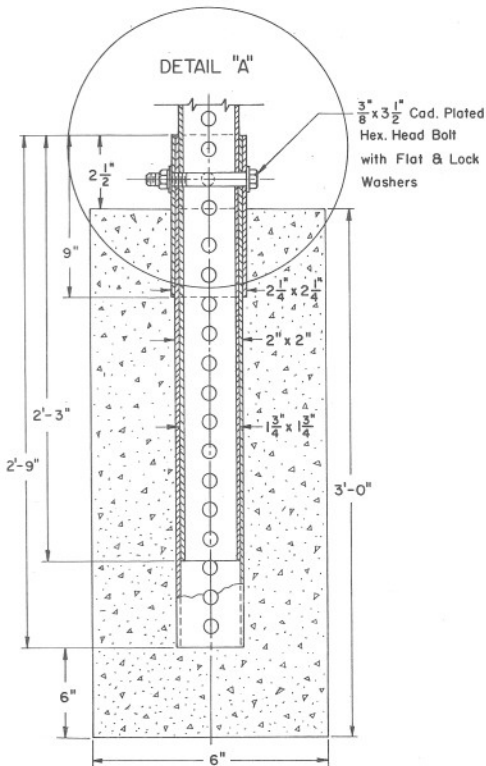
7/16" Dia. Bolt Hole (Typ.) 3/8" Dia. Slotted Head Bolt with Hex. Nut, Flat Washer, Lock Washer and Nylon Washer. Face of Bolt and Nylon Washer shall be same Color as Milepost Panel. Maximum Outside Dia. of all Washers shall be 1/8".



TYPICAL POST DETAIL



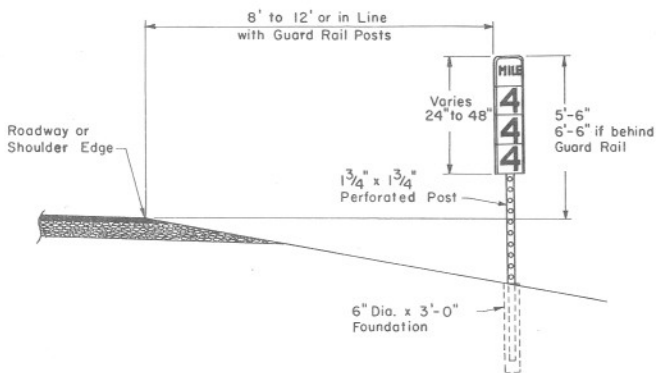
DETAIL "A"



FOUNDATION DETAIL

NOTES:

1. The mileposts shall be placed on the right side of the roadway facing approaching traffic. If they cannot be placed within 0.02 mile accuracy, they shall be omitted.
2. Milepost plates shall be fabricated from 0.063" thick 3003 H14, 5052-H38 or 6061-T6 aluminum sheet.
3. All surfaces to be covered with reflective sheeting shall be prepared in accordance with the recommendations of the sheeting manufacturer.
4. The border and legend shall be standard reflectivity silver-white. The background shall be standard reflectivity green and may be reverse silk-screened. Sheetting shall conform to Section 1007 of the Standard Specifications.
5. The back side of the aluminum sheets shall be etched by approved methods to reduce glare from reflected sunlight.
6. Perforated posts shall be square tube formed from 0.105" U.S.S. guage, A.S.T.M. A-366 cold rolled carbon steel. The square tubes shall be welded directly in the corner by high frequency resistance welding or equal. The posts to be externally scarfed to agree with standard corner radii of 5/32" ± 1/16" and shall be galvanized to conform to the requirements of A.S.T.M. A-525. Coating Design G-90.
7. All hardware shall conform to the requirements of A.S.T.M. A-307, Class A and Section 607-2.03 of the Standard Specifications.
8. All concrete shall be utility grade or better.



TYPICAL MILEPOST INSTALLATION

Where Exst. Mileposts are in Place, the New Milepost is to be installed at the same longitudinal Location

DESIGN APPROVED <i>[Signature]</i> 6/21/89	STATE OF ARIZONA DEPARTMENT OF TRANSPORTATION DIVISION OF HIGHWAYS STANDARD DRAWINGS	REV 5-89
APPROVED FOR DISTRIBUTION <i>[Signature]</i>	FREEWAYS MILEPOST DETAILS	DRAWING NO. 4-S-4.19