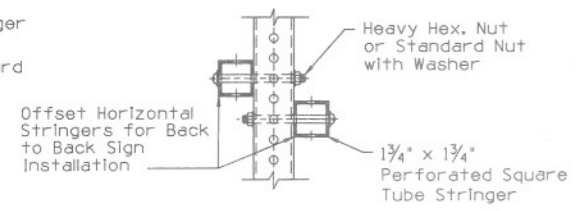
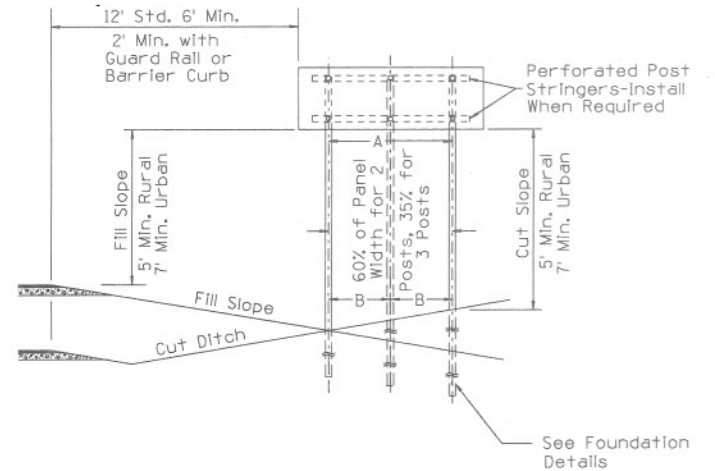
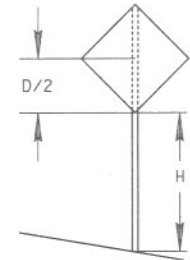


PANEL TO STRINGER OR POST



STRINGER TO POST

STRINGER DETAILS (FOR GUIDE SIGNS UP TO AND INCLUDING 10 FEET WIDE)



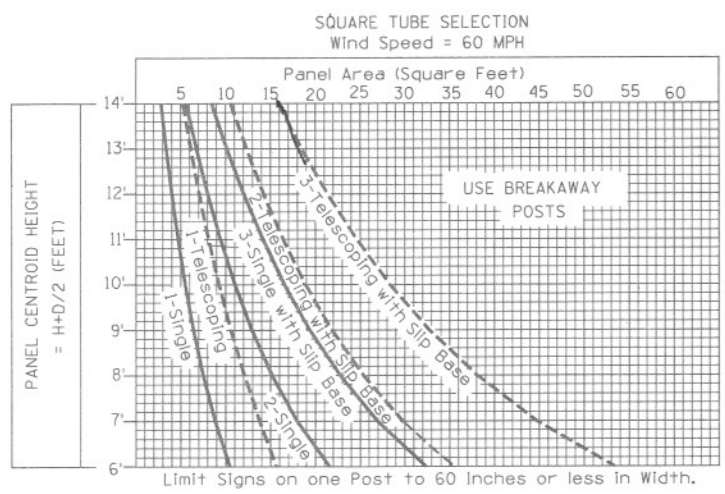
GUIDE SIGN

GUIDE SIGN POST SPACING (Not for use with Warning, Regulatory or Marker Panels)

Panel Width	3'	4'	5'	6'	7'	8'	9'	10'
Two Posts Spacing (A)	1'-10"	2'-4"	3'-0"	3'-8"	4'-2"	4'-10"	5'-4"	6'-0"
Bolts to Panel (per Stringer)	—	—	3	3	3	3	4	4
Length of each Stringer	—	—	4'-0"	4'-8"	5'-2"	5'-10"	6'-4"	7'-0"
Three Posts Spacing (B)	—	—	1'-9"	2'-1"	2'-5"	2'-10"	3'-2"	3'-6"
Bolts to Panel (per Stringer)	—	—	3	3	3	4	4	4
Length of each Stringer	—	—	4'-6"	5'-2"	5'-10"	6'-8"	7'-4"	8'-0"

NOTES:

- All Flat Sheet Aluminum Panels shall be constructed without Splices in the Aluminum.
- Reflective Sheeting Splices are not permitted if Minimum Dimension of Sign is 4' or less.



Limit Signs on one Post to 60 Inches or less in Width.

DESIGN APPROVED *August Hatto* 9/21/90  
 APPROVED FOR DISTRIBUTION *August Hatto* 9/24/90

STATE OF ARIZONA  
 DEPARTMENT OF TRANSPORTATION  
 DIVISION OF HIGHWAYS  
 STANDARD DRAWINGS  
 SQUARE TUBE POST SELECTION  
 AND SIGN MOUNTING DETAILS  
 DRAWING NO. 4-S-4.15  
 9-90