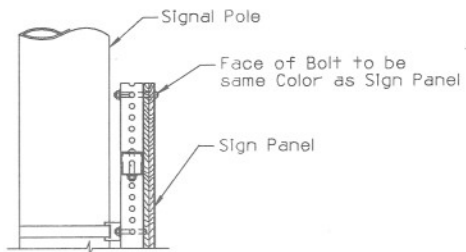
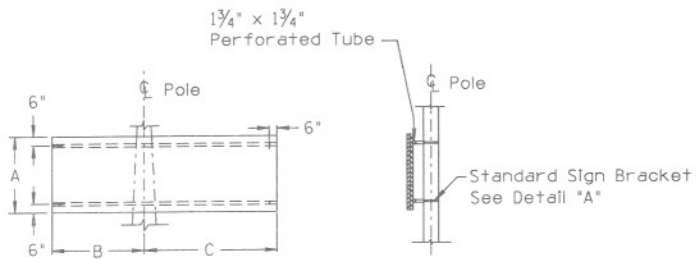


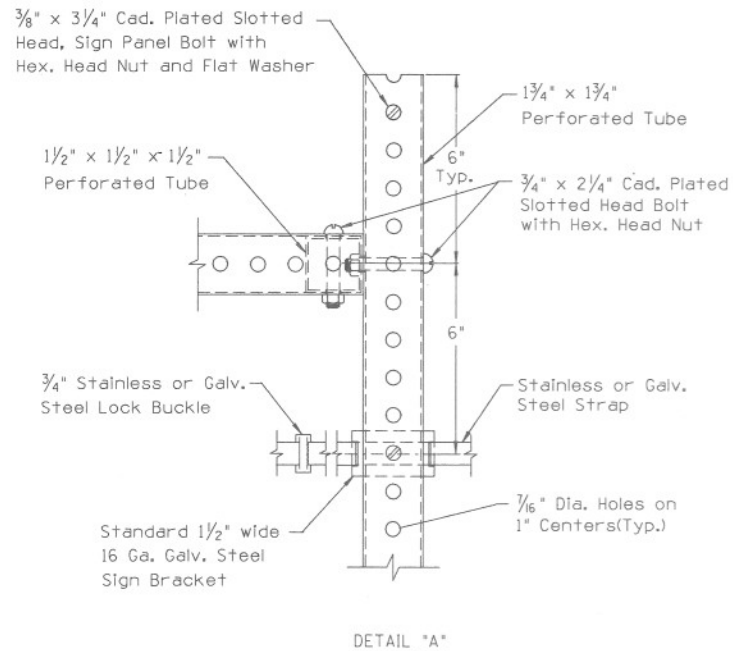
ATTACHMENT OF GUIDE SIGN (TYPE I)  
TO SIGNAL POLE



SECTION "A-A"



ATTACHMENT OF GUIDE SIGN (TYPE II)  
TO SIGNAL POLE



DETAIL "A"

note:

For Dimensions A, B and C, See Sign Summ

DESIGN APPROVED <i>Reginald Hatten</i> - 12/12/90	STATE OF ARIZONA DEPARTMENT OF TRANSPORTATION DIVISION OF HIGHWAYS STANDARD DRAWINGS	6-14 REV. 12-90
APPROVED FOR DISTRIBUTION <i>August V. Harts</i>	SIGN INSTALLATION ON SIGNAL POLE	DRAWING NO. 4-S-4.11