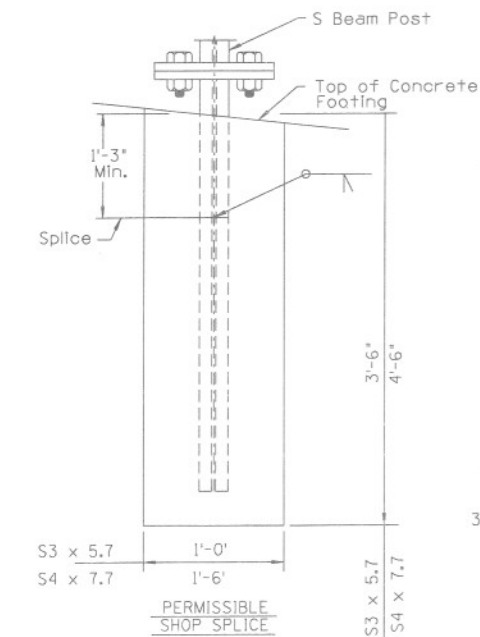
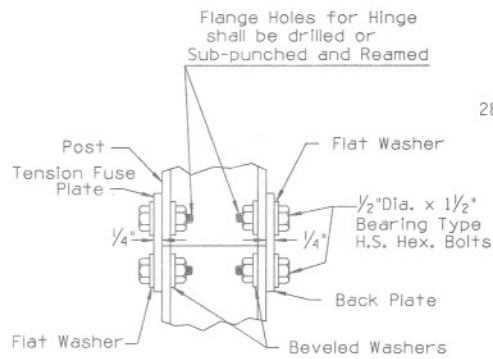


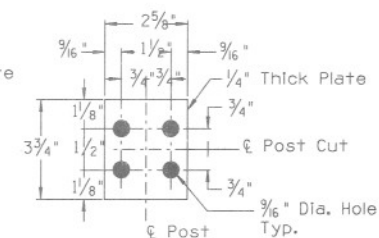
SIDE VIEW



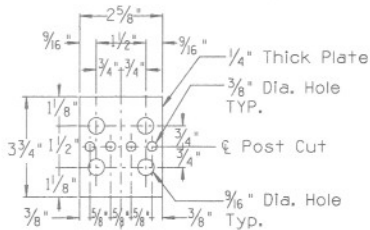
PERMISSIBLE SHOP SPLICE



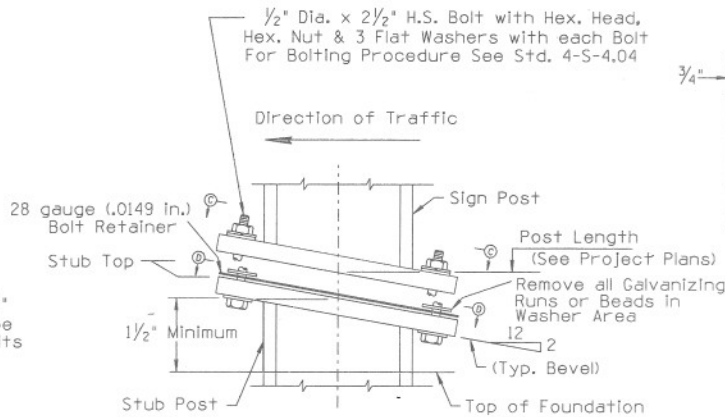
DETAIL "A" HINGE



BACK PLATE
(S3 x 5.7 and S4 x 7.7)

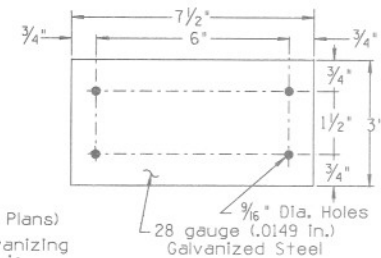


TENSION FUSE PLATE
(S3x5.7 and S4x7.7)

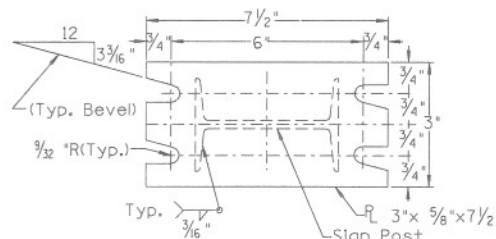


SIGN POST AND STUB POST ELEVATION

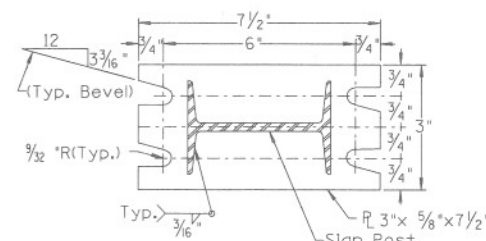
(For S3x5.7 & S4x7.7)



BOLT RETAINER FOR
S3x5.7 & S4x7.7 POSTS



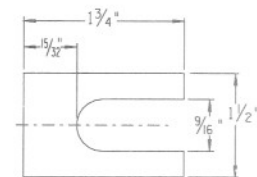
SECTION "D-D"



SECTION "C-C"

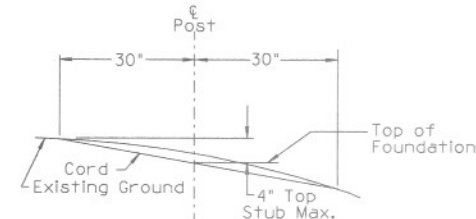
NOTE:

Sections shown are for Installations on Right Shoulder and In Gore. Plate Slot Bevels are opposite Hand from that shown for Installations on Left Shoulder.



Furnish 2 each 0.012+ Thick and 2 each 0.032+ Thick Shims per Post. Shims shall be fabricated from Brass Shim Stock or Strip conforming to the Requirements of A.S.T.M.-B36.

SHIM DETAIL



STUB PROJECTION LIMITS

All Plate Holes shall be drilled. All Plate Cuts shall preferably be Saw Cuts; Flame Cutting will be permitted provided all Edges are ground.

TORQUE REQUIREMENTS

Base Plate = 7 to 11 Foot-Lbs.

DESIGN APPROVED
Robert A. Hatcher 12/12/90
APPROVED FOR DISTRIBUTION
August V. Hantel

STATE OF ARIZONA
DEPARTMENT OF TRANSPORTATION
DIVISION OF HIGHWAYS
STANDARD DRAWINGS
DRAWING NO.
BREAKAWAY POST DETAILS
S - SHAPES
4-S-4.05