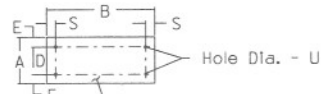
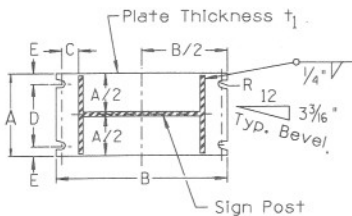


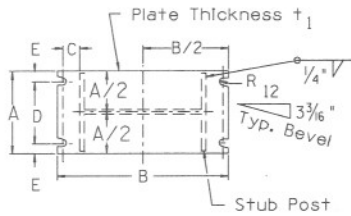
SIGN POST & STUB POST ELEVATION FOR W SHAPES



BOLT RETAINER FOR W SHAPE POST



SECTION A-A

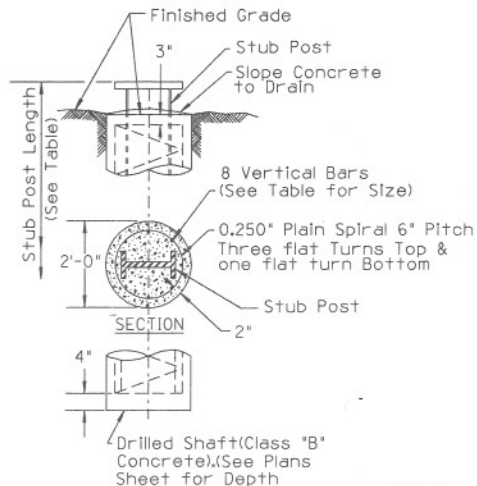


SECTION B-B

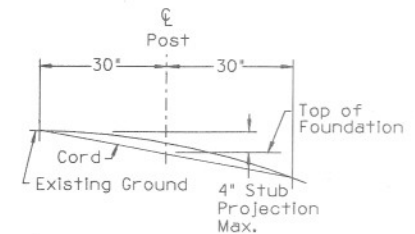
Sections shown are for Installations on Right Shoulder and in Gore. Plate Slot Bevels are opposite Hand from that shown for Installation on Left Shoulder.

BASE CONNECTION DATA TABLE

POST SIZE	BOLT SIZE and TORQUE	Dimensions for Post Sizes								
		A	B	C	D	E	R	t <sub>1</sub>	S	U
W6x9	5/8 Dia. x 3" Torque = 18.8 to 28.8 Foot-Lbs	5 3/4"	9 7/8"	1 1/4"	2 3/4"	1 1/2"	1/32"	3/4"	3/4"	1 1/16"
W6x12		5 3/4"	10"	1 1/4"	2 3/4"	1 1/2"	1/32"	3/4"	3/4"	1 1/16"
W8x18		5 3/4"	12 1/8"	1 1/4"	2 3/4"	1 1/2"	1/32"	3/4"	3/4"	1 1/16"
W10x22	3/4" Dia. x 3" Torque = 31 to 46 Foot-Lbs.	6 1/2"	14 5/8"	1 3/8"	3 1/2"	1 1/2"	1/32"	1"	7/8"	1 3/16"
W12x26		7"	16 3/4"	1 3/8"	3 1/2"	1 3/4"	1/32"	1"	7/8"	1 3/16"



FOUNDATION DETAIL



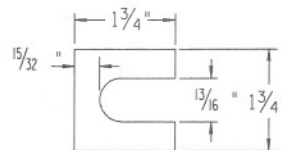
STUB PROJECTION LIMITS

NOTES:

1. All Stub Posts shall be galvanized a Minimum of 12 Inches down from the Base of Plate.
2. Where solid Rock is encountered, Foundation shall be Plan Depth or extended two Feet Minimum into the Rock.
3. All Plate Holes shall be drilled. All Plate Cuts shall preferably be Sawcuts; Flame Cutting will be permitted, provided all Edges are grounded.

PROCEDURE FOR BOLTING & ASSEMBLY OF BASE CONNECTION

1. Assemble Post to Stub with Bolts and with ONE FLAT WASHER ON EACH BOLT BETWEEN PLATES.
2. Shim as required to Plumb Post. (4 SHIMS PER BOLT MAXIMUM).
3. Tighten all Bolts the Maximum possible with 12' to 15' Wrench to bed Washers and Shims and to clean Bolt Threads, then loosen each Bolt in turn and retighten Bolts in a Systematic Order to the prescribed Torque (See Table). Tighten the Bolts in the Base Connection to the Torque shown. **DO NOT OVERTIGHTEN.**
4. Burr Threads at Junction with Nut using a Center Punch to prevent Nut from loosening.



SHIM DETAIL

Furnish 2 each 0.012"± thick and 2 each 0.032"± thick Shims per Post. Shims shall be fabricated from Brass Shim Stock or Strip conforming to the Requirements of A.S.T.M. - B - 36. Four Shims per Bolt Maximum.

FOUNDATION DATA				APPROXIMATE QUANTITIES PER LIN.F.T.	FOUNDATION DEPTH (See Note 2 also)				
POST SIZE	STUB LENGTH	STUB PROJECTION	VERTICAL BAR SIZE		CONC. CU.YD.	STEEL LBS.	TWO POSTS SLOPES ≤ 4:1	THREE POSTS SLOPES > 4:1	TWO POSTS SLOPES ≤ 4:1
W6x9	2'-0"	3"	#5	0.116	8.9	6'-0"	6'-0"		
W6x12	2'-0"	3"	#5	0.116	8.9	6'-0"	6'-0"		
W8x18	2'-6"	3"	#7	0.116	16.3	7'-0"	7'-6"		
W10x22	3'-0"	2 1/2"	#9	0.116	26.5	8'-0"	8'-6"		
W12x26	3'-0"	2 1/2"	#11	0.116	41.3	11'-0"	9'-6"	11'-6"	10'-0"

DESIGN APPROVED  
*Joseph Hatten* 12/12/90  
 APPROVED FOR DISTRIBUTION  
*August Hatten*

STATE OF ARIZONA  
 DEPARTMENT OF TRANSPORTATION  
 DIVISION OF HIGHWAYS  
 STANDARD DRAWINGS  
 BREAKAWAY POST DETAILS  
 W SHAPE GUIDE SIGNS  
 DRAWING NO.  
 4-S-4.04

10-87  
 REV.  
 12-90