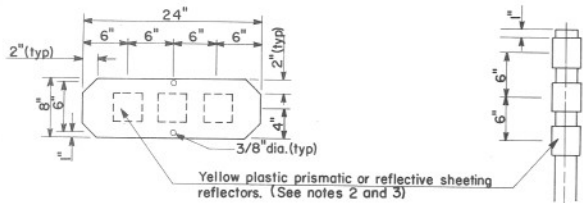
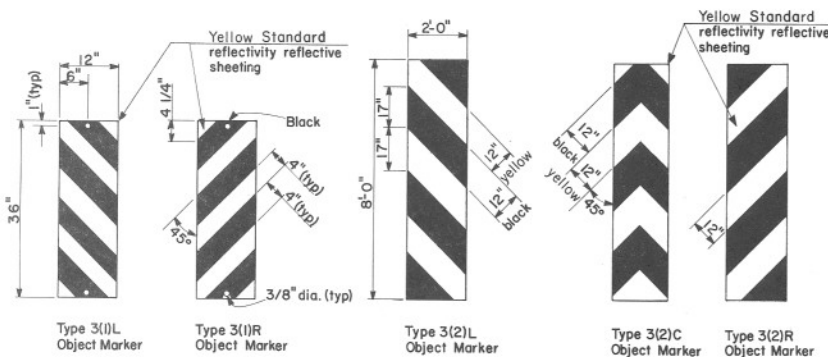


**TYPE I OR 4 OBJECT MARKER**



**TYPE 2 OBJECT MARKER (Triple Horizontal)**

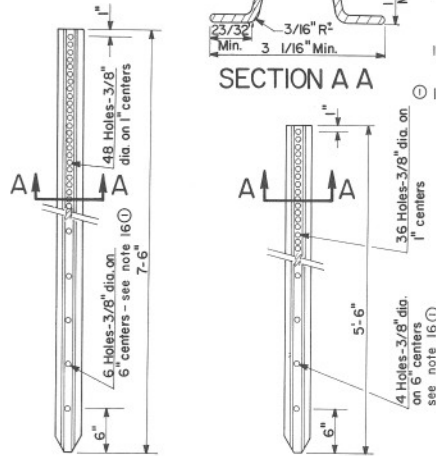
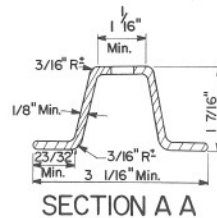
**TYPE 2 OBJECT MARKER (Triple Vertical)**



**NOTES:**

1. Standard Type 1 object markers (18"x18"):
  - Type 1A: All yellow reflectorized marker (high reflectivity reflective sheeting).
  - Type 1B: Black opaque background with nine 3/4" diameter yellow prismatic reflectors.
  - Type 1C: Black opaque background with nine 4"x4" yellow high reflectivity reflective sheeting.
2. Standard Type 2 Triple Horizontal Object Markers (24"x8"):
  - Type 2A: Black opaque background with three 4"x4" yellow high reflectivity reflective sheeting reflectors.
  - Type 2B: Black opaque background with three 3/4" diameter yellow plastic prismatic reflectors.
3. Standard Type 2 Triple Vertical Object Markers:
  - Type 2A: Three 4"x4" yellow high reflectivity reflective sheeting reflectors.
  - Type 2B: Three 3/4" diameter yellow plastic prismatic reflectors.
4. Type 3 Object Markers shall be reflectorized with yellow standard reflectivity reflective sheeting.
5. Standard Type 4 Object Markers (18"x18"):
  - Type 4A: All red reflectorized marker (high reflectivity reflective sheeting).
  - Type 4B: Black opaque background with nine 3/4" diameter red plastic prismatic reflectors.
  - Type 4C: Black opaque background with nine 4"x4" red high reflectivity reflective sheeting reflectors.

6. Reflective devices shall be either plastic prismatic reflectors or reflective sheeting, at the option of the contractor; however, a single style shall be used throughout the project.
7. Prismatic reflectors shall be yellow or red as required and shall conform to Section 1008 of the Standard Specifications. They shall be mounted on backplates with 3/16" aluminum blind rivets. They may be mounted on posts with aluminum blind rivets or corrosion resistant bolts (Deform threads after installation). Length of bolts and blind rivets shall be as required.
8. Reflective sheeting reflectors shall be silver-white, yellow or red as required and shall conform to Section 1007 of the Standard Specifications.
9. The backplates for object markers shall be fabricated from .063" thick 3003-H14, 5052-H38 or 6061-T6 aluminum alloy etched on both sides. Reflector mounting holes shall not be provided when reflective sheeting type reflectors are used. The face shall be painted with black enamel paint. Type 3(1) and Type 3(2) object marker backplates may be fabricated from 5/8" thick medium density overlay sign grade plywood. The face shall be painted with black enamel paint and the back shall be painted with gray primer.
10. The backplates for 4"x4" reflective sheeting type reflectors for Type 2 triple vertical object markers shall be fabricated from .063" thick 3003-H14, 5052-H38 or 6061-T6 aluminum alloy etched on both sides.
11. Where the Type 2 triple horizontal object marker is required for an obstruction less than 3'-0" wide, the backplate may be provided in a smaller size than standard; however, reflector sizes shall remain the same.
12. Steel posts shall conform to ASTM A499-81 Grade 60 or ASTM-A576, Grade 1080 or ASTM-A570, Grade 60, and shall weigh 2.00 lbs. ft. with a weight tolerance of 5%. Posts shall be hot-dipped galvanized in accordance with ASTM-A123.
13. For placement details see Standard 4-M-3.02.
14. Backplates shall be mounted with 5/16" diameter corrosion resistant bolts (Deform threads after installation). Length of bolts shall be as required.
15. Paint shall conform to the current edition of the Arizona Department of Transportation Standard Specifications.
16. Posts may be punched the full length with 3/8" diameter holes at 1" centers as an acceptable alternate to hole spacing shown.



**GALVANIZED STEEL POSTS**

DESIGN APPROVED <i>Signature</i> 8/27/87	STATE OF ARIZONA DEPARTMENT OF TRANSPORTATION DIVISION OF HIGHWAYS STANDARD DRAWINGS	REV. 8-81 10-82 8-84 7-87 6-88
APPROVED FOR DISTRIBUTION <i>Signature</i> 12/2/87	OBJECT MARKER DETAILS	DRAWING NO. <b>4-M-3.01</b>