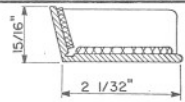
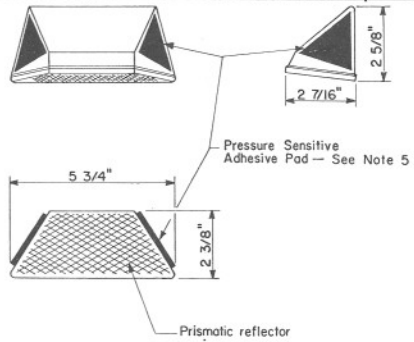
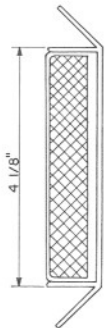
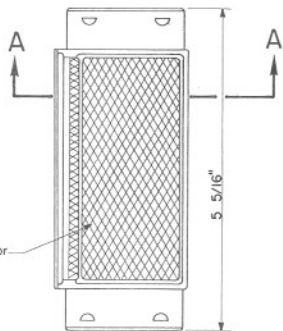


CONCRETE BARRIER MARKERS



SECTION A-A



TUBULAR THRIE BEAM BARRIER MARKERS

1. BRIDGE AND BARRIER MARKER DESIGNATIONS SHALL BE AS FOLLOWS:  
BM-1 SINGLE FACE WHITE  
BM-2 SINGLE FACE YELLOW
2. PRISMATIC REFLECTORS SHALL BE COLORLESS OR AMBER AS REQUIRED AND SHALL CONFORM TO THE REQUIREMENTS OF SECTION 1008 OF THE STANDARD SPECIFICATIONS.
3. ALL DIMENSIONS ARE NOMINAL.
4. SEE STANDARD DRAWING 4-M-10.02 FOR SPACING AND INSTALLATION DETAILS.
5. PRESSURE SENSITIVE BUTYL RUBBER ADHESIVE PAD IS SHOWN. ALTERNATE METHODS OF ATTACHING THE BARRIER MARKER SUCH AS THE MANUFACTURES APPROVED ADHESIVE APPLIED WITH A CAULKING GUN IS ACCEPTABLE.

DESIGN APPROVED <i>Robert Brown</i> 7/24/01	STATE OF ARIZONA DEPARTMENT OF TRANSPORTATION DIVISION OF HIGHWAYS STANDARD DRAWINGS	REV. 1 8-81 1 7-83 2-85
APPROVED FOR DISTRIBUTION <i>John M. ...</i> 8/2/01	BRIDGE & BARRIER MARKER DETAILS	DRAWING NO. 4-M-10.01