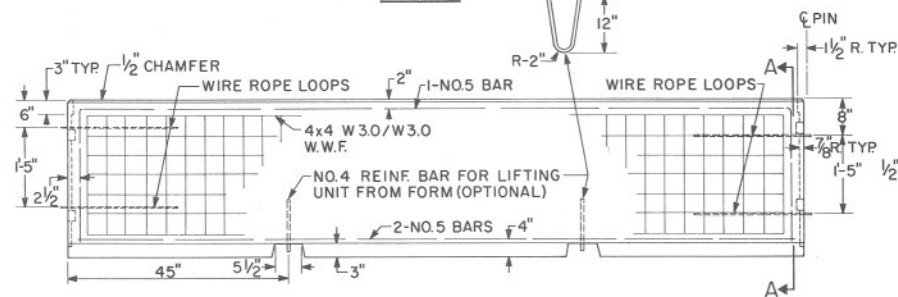
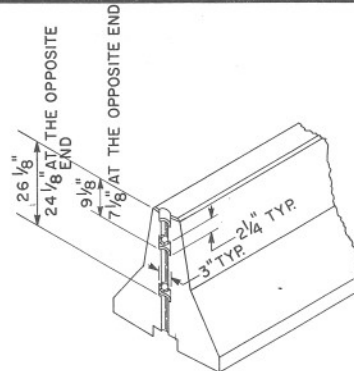


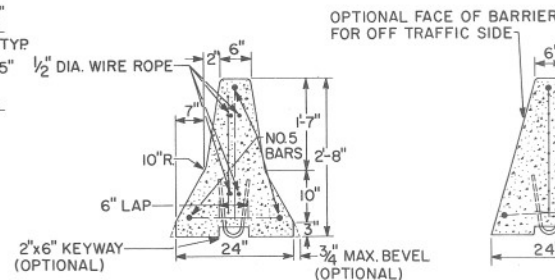
PLAN



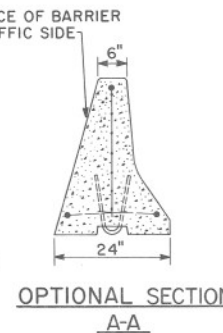
ELEVATION



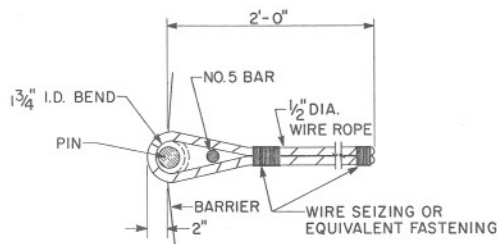
END SECTION VIEW



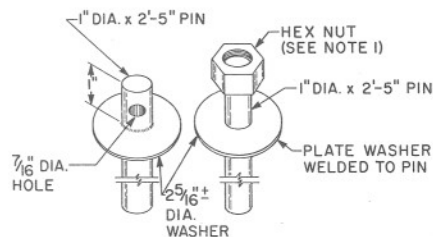
SECTION A-A



OPTIONAL SECTION A-A



WIRE ROPE DETAIL  
(SEE NOTE NO.5)



CONNECTING PIN  
(SEE NOTE NO.4)

PRECAST NOTES:

CONCRETE 28 DAY DESIGN STRENGTH OF  $f'_c = 4000$  P.S.I. WELDED WIRE FABRIC SHALL CONFORM TO THE REQUIREMENTS OF AASHTO M55.

NOTES:

1. TO FACILITATE PIN REMOVAL, THREAD HEX. NUT HALF WAY ONTO THE PIN AND TACK WELD, OR PROVIDE A COUPLING NUT, TIGHTENED SUFFICIENTLY TO PREVENT LOOSENING. FILL NUT WITH GREASE TO EXCLUDE ICE OR OTHER CONTAMINANTS.
2. PLACE CONCRETE BARRIER ON 1" STYROFOAM PAD WHEN BARRIER IS PLACED ON A.C. & CONC. PAVEMENT. PAD SHALL BE 24"x32" CENTERED ON JOINTS.
3. INSTALL TYPE BM-1 OR BM-2 BARRIER DELINEATOR AT 25 FT. SPACING. SEE STD. 4-M-10.01 & 10.02.
4. THE CONNECTING PIN, WASHER AND NUT SHALL CONFORM TO A.S.T.M. A 36 STEEL AND HOT DIPPED GALVANIZED ACCORDING TO A.S.T.M. A-153.
5. THE WIRE ROPE SHALL BE 1/2" DIA.-6x19 I.P.S. WIRE CORE WITH INDEPENDENTLY WOUND WIRE CORE.
6. ALTERNATE CROSS-SECTION DESIGN WITH AN 8" TOP WIDTH AND A 26" BOTTOM WIDTH IS ACCEPTABLE.

DESIGN APPROVED <i>[Signature]</i> 3/85	STATE OF ARIZONA DEPARTMENT OF TRANSPORTATION DIVISION OF HIGHWAYS STANDARD DRAWINGS TEMPORARY CONCRETE BARRIER	REV. 0 6-88
APPROVED FOR DISTRIBUTION <i>[Signature]</i>	DRAWING NO. 4-C-2.01	