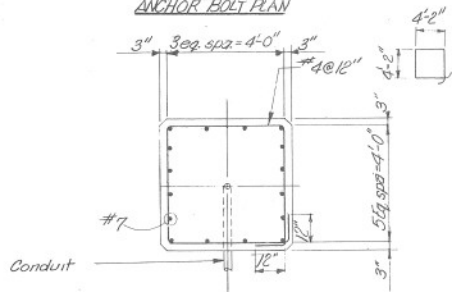
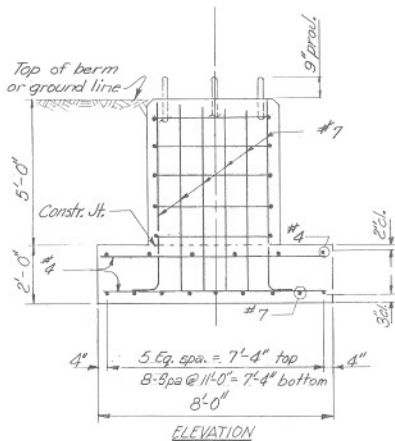


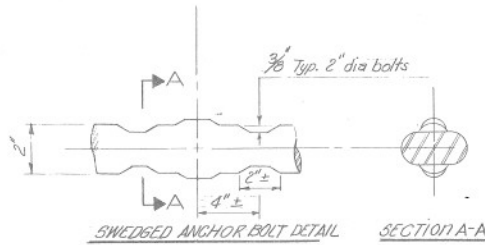
ANCHOR BOLT PLAN



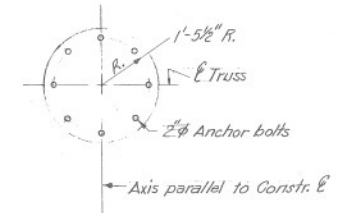
SECTION B-B



ELEVATION



SWEDGED ANCHOR BOLT DETAIL SECTION A-A

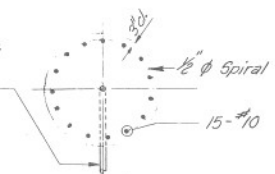


ANCHOR BOLT PLAN

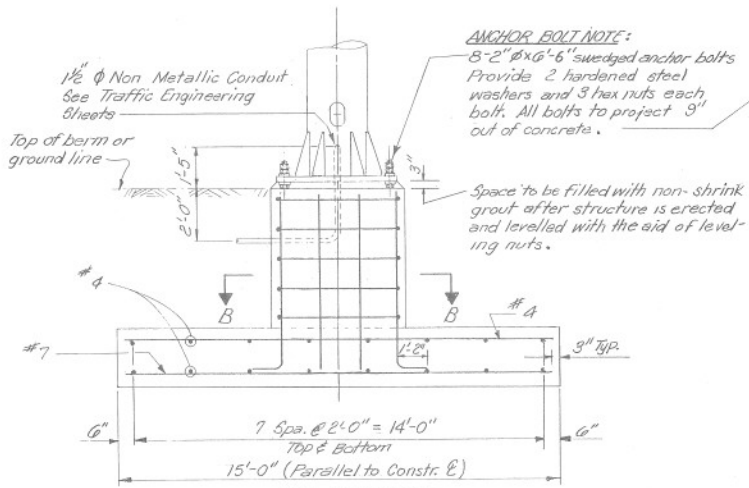
EMBANKMENT SLOPE	EMBEDMENT *
Level to 8:1	15'-0"
6:1	16'-0"
4:1	17'-0"
3:1	18'-0"
2:1	19'-0"
1 1/2:1	20'-0"
1:1	23'-0"

* Embedment is measured at the E of the shaft.

1 1/2" Non-Metallic conduit See Traffic Engineering Sheets



SECTION C-C

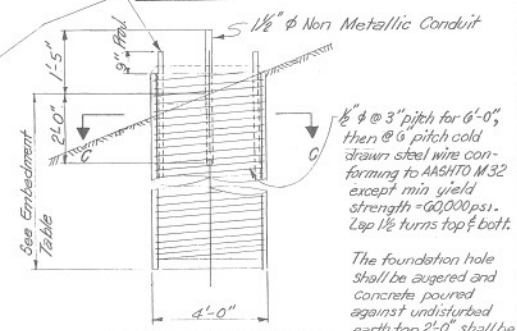


SIDE ELEVATION

SPREAD FOOTING ALTERNATE

NOTE: The Spread Footing Alternate is only to be used in situations where:
 1. The slopes vary from level to 8:1 slopes maximum.
 2. The allowable soil pressure = 3 KSF minimum.

ANCHOR BOLT NOTE:
 8-2" #6 x 6-6" swedged anchor bolts Provide 2 hardened steel washers and 3 hex nuts each bolt. All bolts to project 9" out of concrete.



DRILLED SHAFT ALTERNATE

6" #3 @ 3" pitch for 6'-0", then @ 6" pitch cold drawn steel wire conforming to AASHTO M32 except min yield strength = 60,000 psi. Lap 1 1/2" turns top & bottom.

The foundation hole shall be augered and concrete poured against undisturbed earth; top 2'-0" shall be poured in forms to diameter required.



DESIGN APPROVED J.D. Bend 11-20-85	STATE OF ARIZONA DEPARTMENT OF TRANSPORTATION DIVISION OF HIGHWAYS STANDARD DRAWINGS	REV. 8-86 5-87
APPROVED FOR DISTRIBUTION James O. ...	CANTILEVER SIGN FOUNDATION DETAILS	DRAWING NO. 2-S-5.27