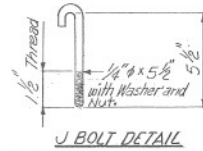
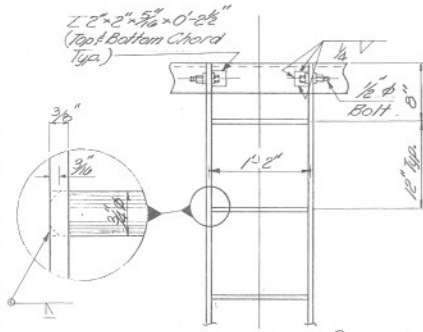
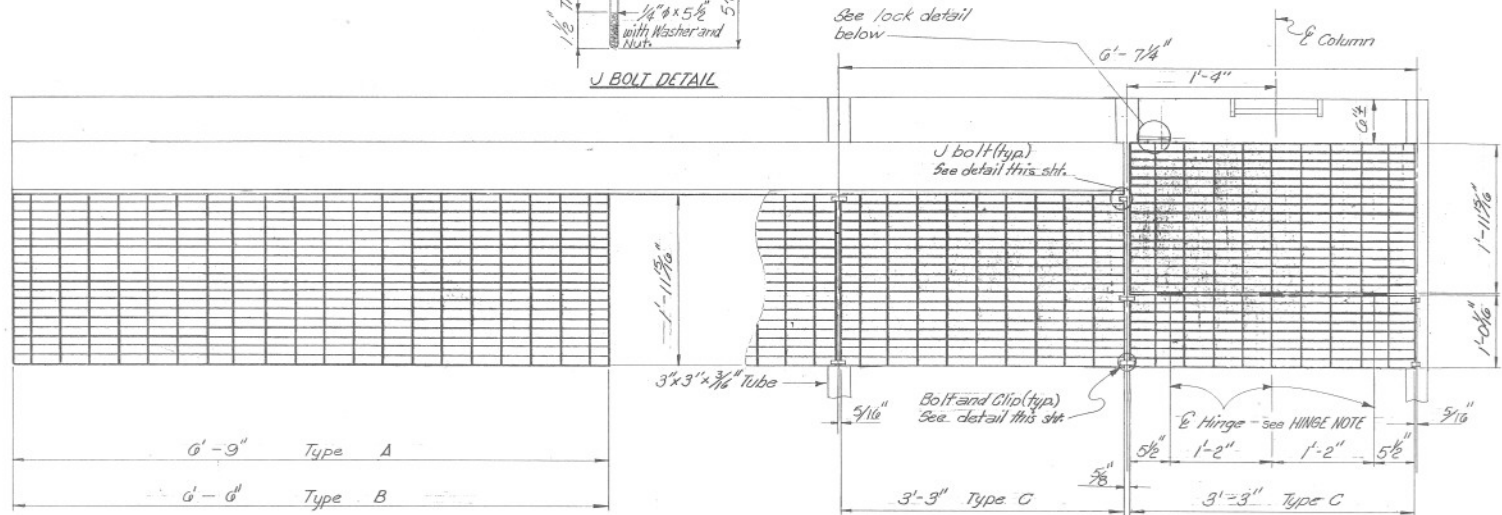


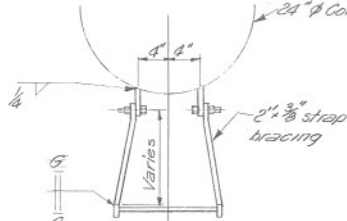
GRATING BOLT & CLIP DETAIL



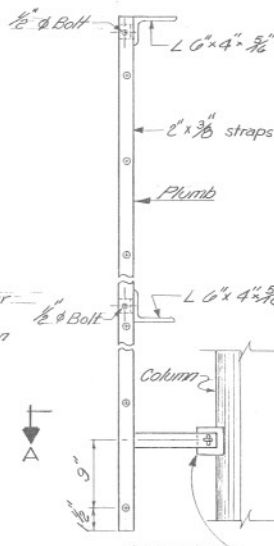
J BOLT DETAIL



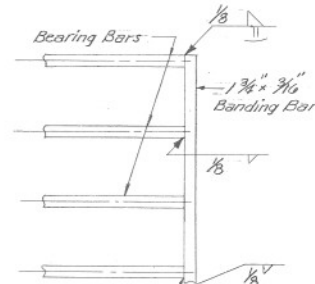
ELEVATION



SECTION A-A LADDER DETAILS

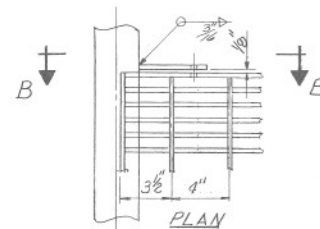


SIDE VIEW

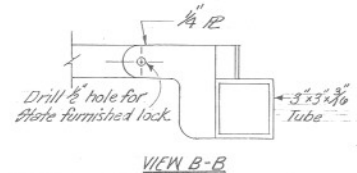


Welded grating shall be Irving Type IWA or approved equal. Bearing and banding bars shall be 1 3/4 x 3/16. Bearing bars shall be at 1 3/4" centers, cross bars shall be at 4" centers. All grates shall have banding bars at both ends. Weld bearing bars to banding bars with 1/8" fillet weld one side every second bar and as shown above. After fabrication grating shall be straight and true. Truss grating shall be welded to WT 4x5x3-1/16 with 1/8" fillet weld at each panel point on outside edge of outside bearing bars.

R 3/16 x 3/8 x 4" (Grind Exposed Corners). Place 3/16 x 1/2 horizontal slots in 3/8" strap bracing and 3/16 x 1/2 vertical slots in 3/8" R.



PLAN ACCESS GRATING LOCK DETAIL



VIEW B-B

HINGE NOTE:

Use 3"x3" cad. plated butt hinges. 3 required each opening cut to fit. Weld to grating; top of hinge flush w/top of grating. Hinge to allow 180° movement of access grating.



DESIGN APPROVED
J. O. Davis
11-20-85
APPROVED FOR DISTRIBUTION
James O. Davis

STATE OF ARIZONA
DEPARTMENT OF TRANSPORTATION
DIVISION OF HIGHWAYS
STANDARD DRAWINGS
CANTILEVER SIGN
LADDER AND GRATING DETAILS

REV 8-86
5-87
DRAWING NO.
2-S-5.24