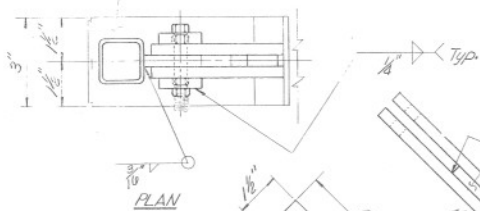
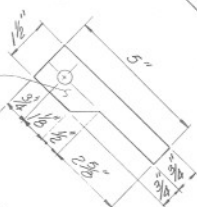


Base Plate
3" x 1/4" x 0-1 1/8"



Kicker Plate-2 pcs.



Handrail

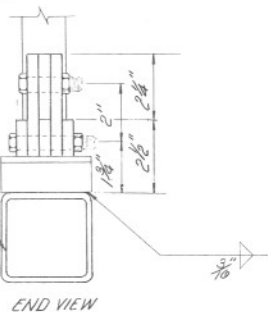
Hinge Leaf
2" x 3/8" x 0-4"

Clevis
2 pcs. 1 1/2" x 3/8" x 0-2 1/4"

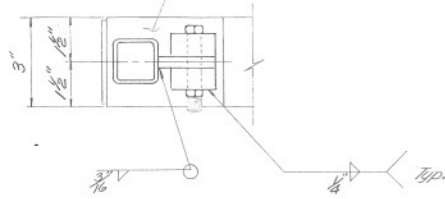
3" x 3" x 3/16" Tube

ELEVATION

SUPPORT
DETAIL A



Base Plate
3" x 1/4" x 0-4"



Handrail

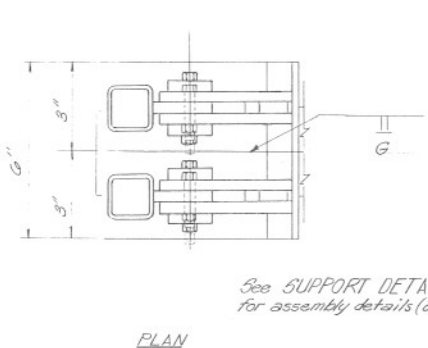
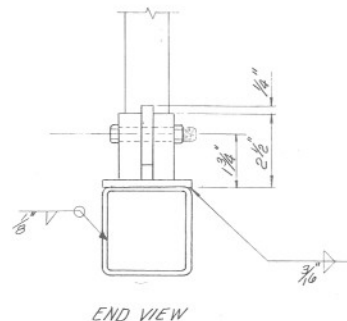
Hinge Leaf
2" x 3/8" x 0-2"

Clevis
2 pcs. 1 1/2" x 3/8" x 0-2 1/4"

3" x 3" x 3/16" Tube

ELEVATION

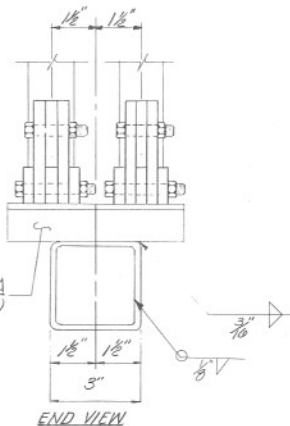
SUPPORT
DETAIL B



See SUPPORT DETAIL A
for assembly details (2-ea.)

PLAN

SUPPORT
DETAIL C



Handrail

2 1/4" hole for
3/8" Std. bolt,
washers, and
hex nut. (2 ea.)

L 2 1/2" x 2 1/2" x 3/8" x 0-3"

PERMANENT SUPPORT DETAIL

NOTE:
All bolted connections shall have 7/16" hole
for Std. 1/2" bolt, washers, and hex
nut, unless noted otherwise.



DESIGN APPROVED

J. D. Carr
11-20-85

APPROVED FOR
DISTRIBUTION

J. O. Miller

STATE OF ARIZONA
DEPARTMENT OF TRANSPORTATION
DIVISION OF HIGHWAYS
STANDARD DRAWINGS

CANTILEVER SIGN
HANDRAIL SUPPORT DETAILS

REV
8-86
5-87

DRAWING NO.
2-S-5.23