

For Support Detail A, B and C and Permanent Support Detail see DRAWING NO. E-9-5.23.

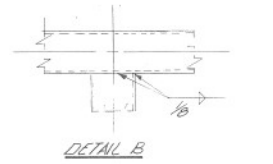
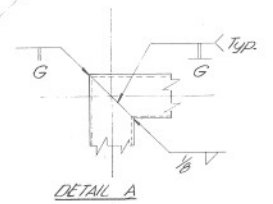
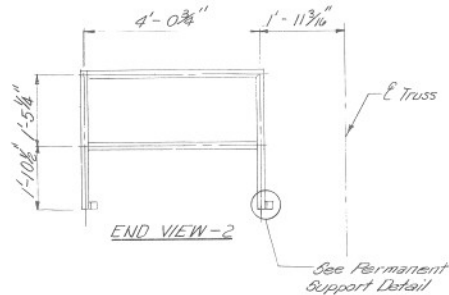
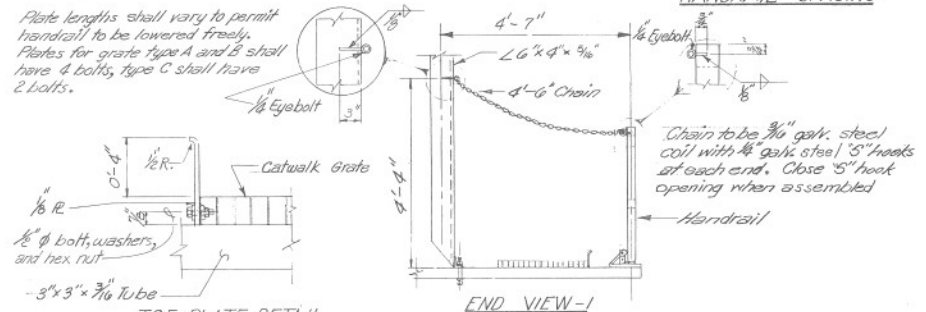
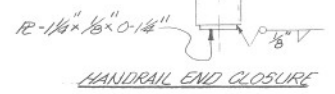
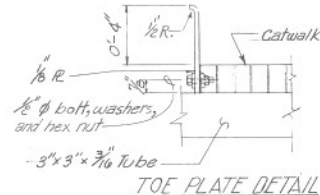


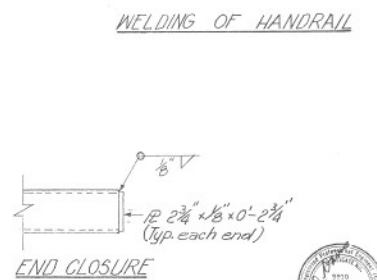
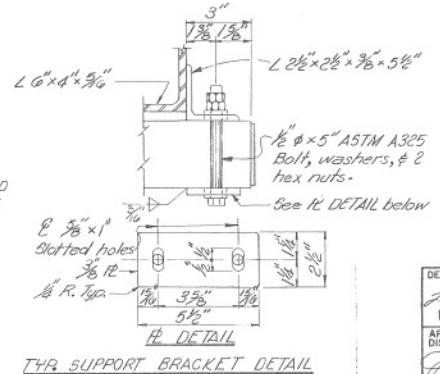
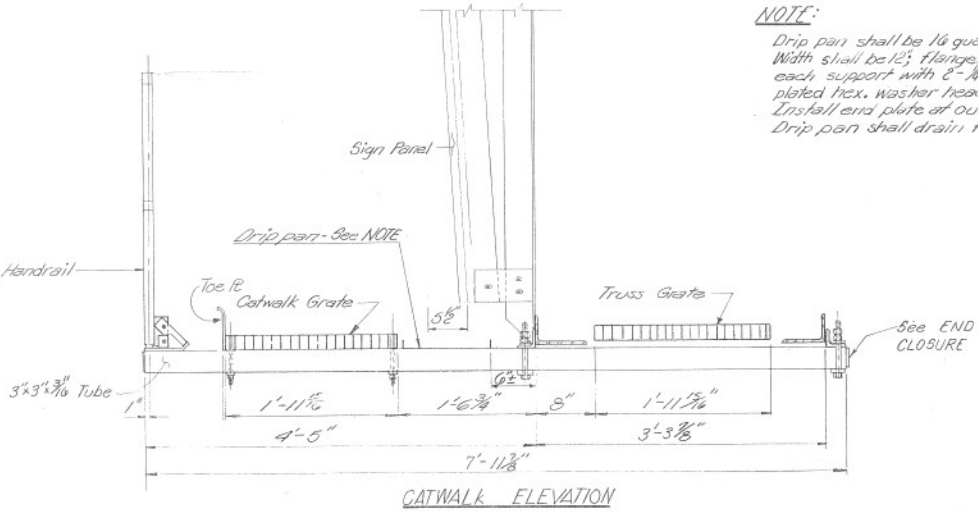
Plate lengths shall vary to permit handrail to be lowered freely. Plates for grate type A and B shall have 4 bolts, type C shall have 2 bolts.



NOTE: Typical all Support Details, See DRAWING NO. E-9-5.23.



NOTE: Drip pan shall be 16 gauge galvanized steel. Width shall be 12 inches; flanges, shall be 1 inch fasten to each support with E-1/4 inch sheet metal screws, plated hex. washer head with neoprene washer. Install end plate at outward end of gutter. Drip pan shall drain to column end.



DESIGN APPROVED J.D. Brand 11-20-85	STATE OF ARIZONA DEPARTMENT OF TRANSPORTATION DIVISION OF HIGHWAYS STANDARD DRAWINGS	REV 8-86 5-87
APPROVED FOR DISTRIBUTION James S. Miller	CANTILEVER SIGN HANDRAIL DETAILS	DRAWING NO. 2-S-5.22

DATE	BY	CHKD	APP'D