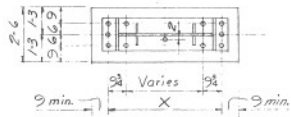


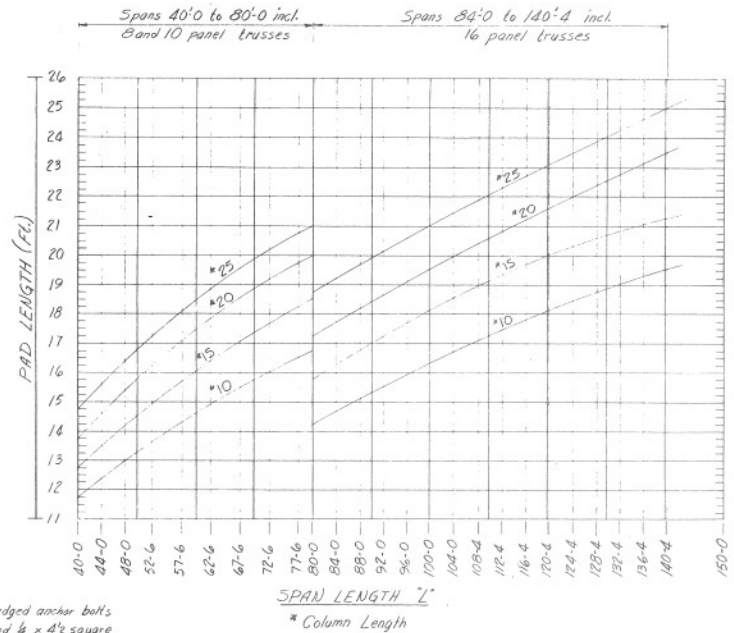
SECTION - 37



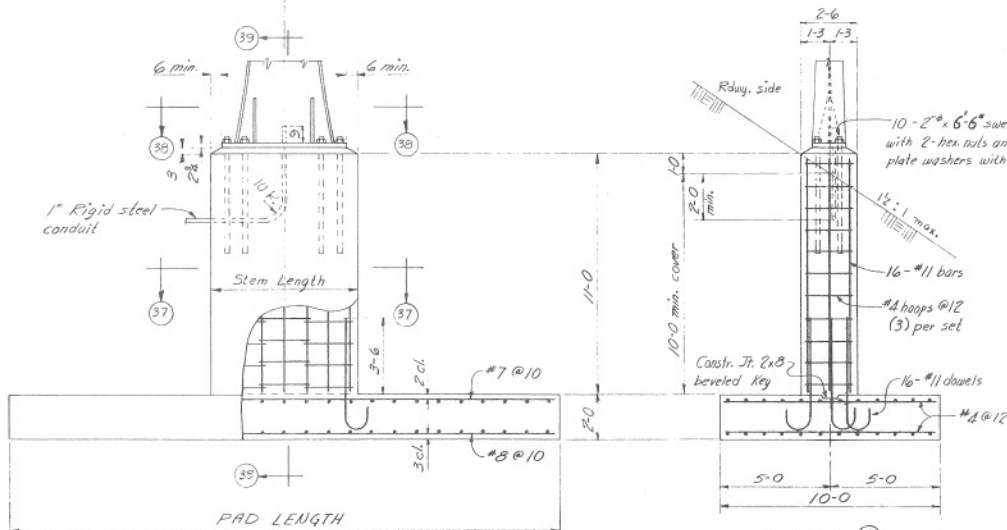
SECTION - 38

*Column Length	Stem Length
0 - 13-0	4-4
13-0+ - 17-0	5-0
17-0+ - 20-0	5-6
20-0+ - 22-0	6-0
22-0+ - 25-0	6-9

\* Top of base plate to top of lower truss bracket on column. See Traffic Eng. sheets for column lengths.

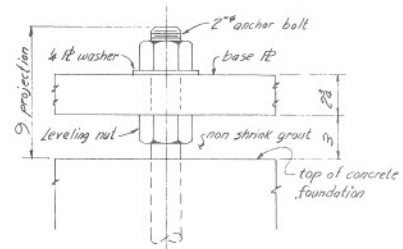


SPAN LENGTH "L"  
\* Column Length

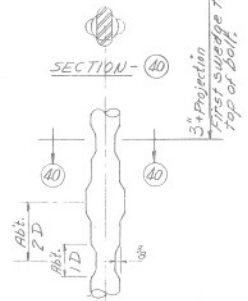


ELEVATION

SECTION - 39



TYPICAL ANCHOR BOLT SETTING



SWEDGED ANCHOR BOLT DETAIL



DESIGN APPROVED  
R.C. Bucher  
APPROVED FOR DISTRIBUTION  
James R. Hyslop  
5-24-82

STATE OF ARIZONA  
DEPARTMENT OF TRANSPORTATION  
DIVISION OF HIGHWAYS  
STANDARD DRAWINGS  
OVERHEAD SIGN STRUCTURE  
FOUNDATION DETAILS

REV. 11-74 1-86  
DRAWING NO. 2-S-5.16