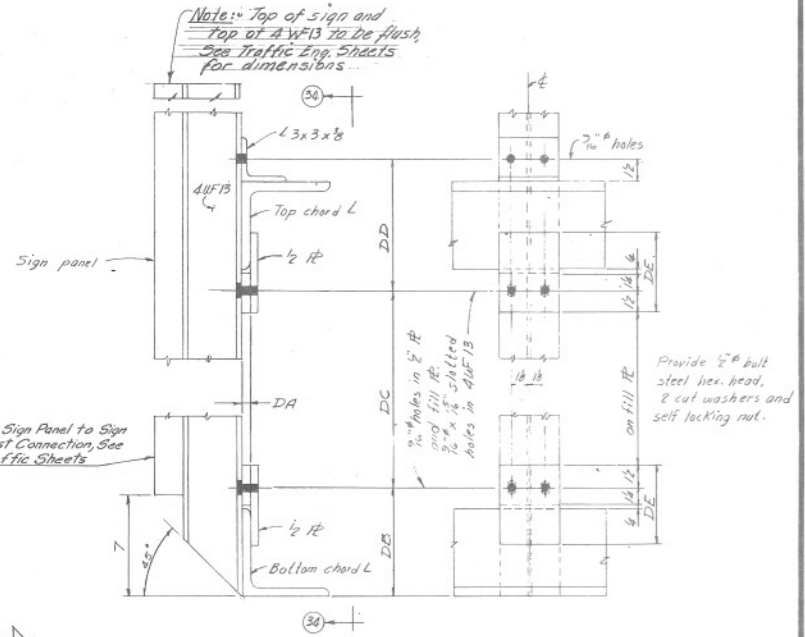
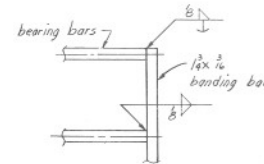


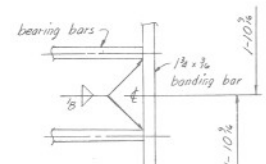
Work this sheet with Std.s. 2-S-5.12 through 2-S-5.14



DETAIL - (33)
Sign to truss connection



DETAIL - (35)
Typical @ all corners



DETAIL - (36)
For grating G11 only

Welded grating to be Irving Type IWA or approved equal.
1 1/2 x 3/8 bearing bars @ 1 1/2" centers and cross bars @ 4" centers.
All grating to have 1 1/2 x 3/8 banding bars both ends.
Weld bearing bars to banding bars with 1/8 fillet weld one side every second bar and as shown in detail 35 and 36.
After fabrication grating to be straight and true.



DESIGN APPROVED
R.C. Bruehler
APPROVED FOR DISTRIBUTION
F.P. Bruehler

STATE OF ARIZONA
DEPARTMENT OF TRANSPORTATION
DIVISION OF HIGHWAYS
STANDARD DRAWINGS
OVERHEAD SIGN STRUCTURE
GRATING
SIGN CONNECTION DETAILS

REV. 11-74
DRAWING NO.
2-S-5.15