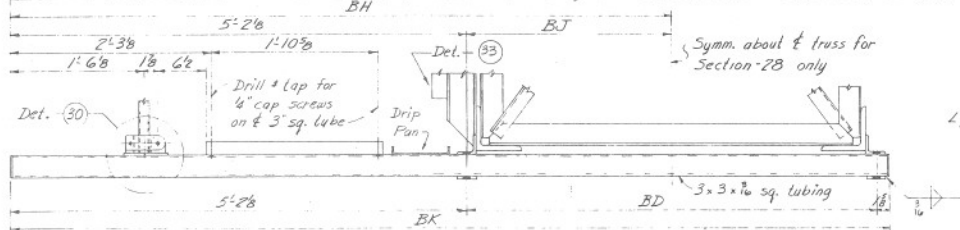
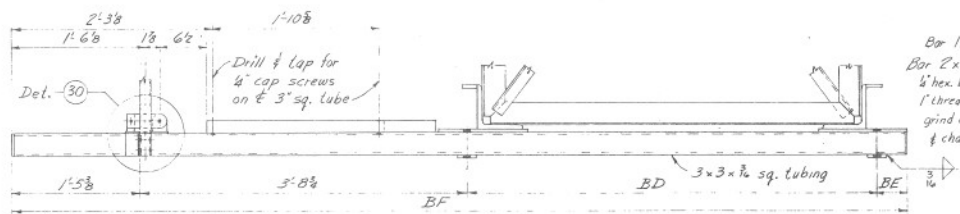


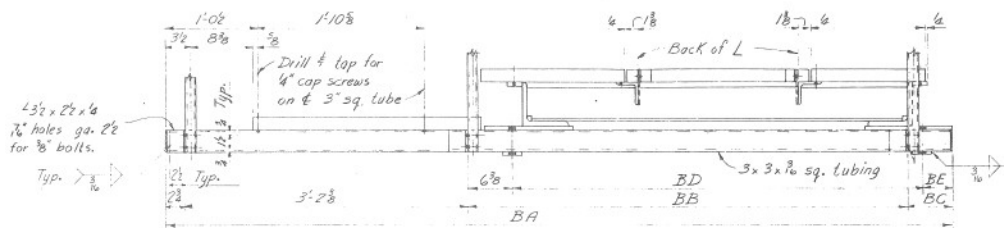
SECTION-29
BQ - end to end of tubing



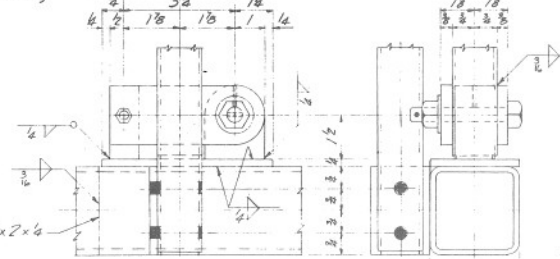
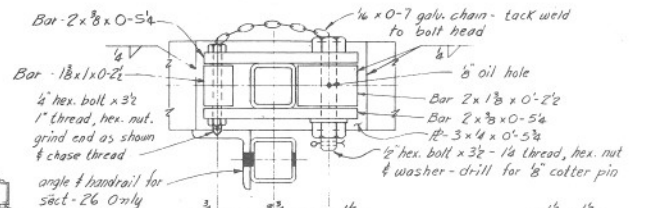
SECTION-27 as shown
SECTION-28 as shown & noted



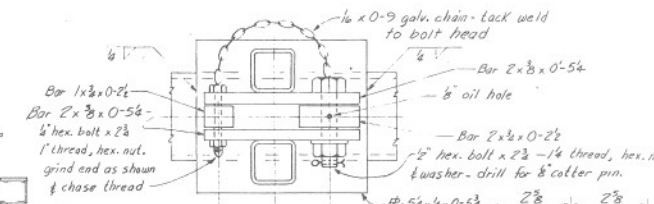
SECTION-26



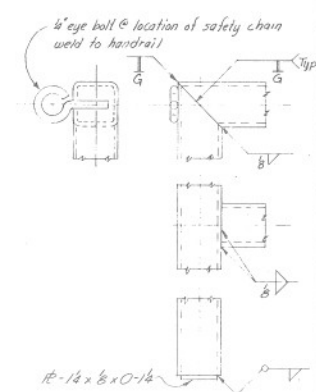
VIEW-25



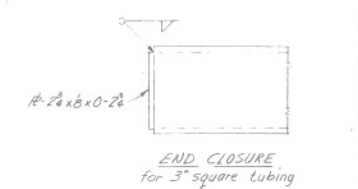
DETAIL-30



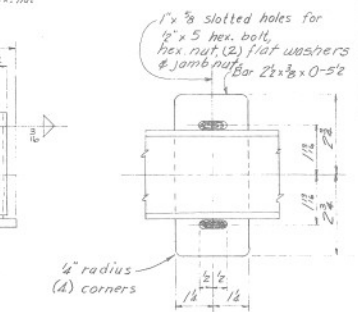
DETAIL-31



WELDING OF HANDRAIL
1/2 x 1/2 x 2 1/2 wall square tubing
2-70 lbs. per ft.



END CLOSURE
for 3 inch square tubing



SECTION-32
Typ. for walkway supports



DESIGN APPROVED R.C. Bruchler	STATE OF ARIZONA DEPARTMENT OF TRANSPORTATION DIVISION OF HIGHWAYS STANDARD DRAWINGS	REV. 11-74
APPROVED FOR DISTRIBUTION E.P. ...	OVERHEAD SIGN STRUCTURE WALKWAY SUPPORT-HANDRAIL AND SIGN CONNECTION DETAILS	DRAWING NO. 2-S-5.14

Work this sheet with Stds. 2-S-5.12, 2-S-5.13 & 2-S-5.15