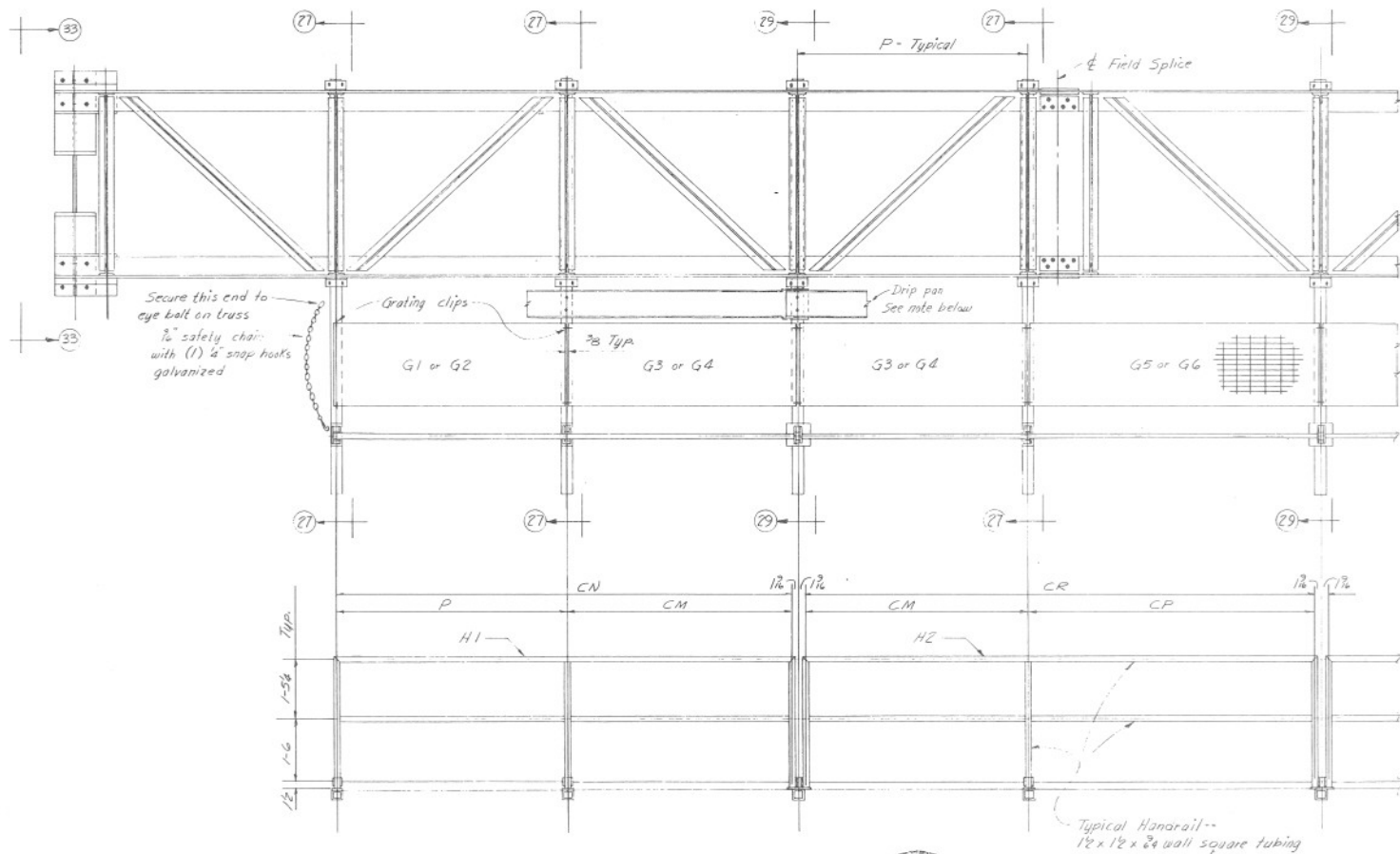


VIEW - 35



Note:

Drip pan shall be made of 16 ga. galvanized steel, 8" wide with 1" flanges fastened at each support with (2) #4 sheet metal screws, hex. washer head (plate), with neoprene washer. When lap joints are necessary, these joints shall be made at walkway supports. Drip pan to drain from center of structure towards column end.

Work this sheet with stds. 2-5-5.13 through 2-5-5.15

DESIGN APPROVED <i>R.C. Brubaker</i>	STATE OF ARIZONA DEPARTMENT OF TRANSPORTATION DIVISION OF HIGHWAYS STANDARD DRAWINGS	REV. 4/17
APPROVED FOR DISTRIBUTION <i>F.F. Standish</i>	OVERHEAD SIGN STRUCTURE WALKWAY SUPPORT-GRATING-HDRL AND DRIP PAN DETAILS	DRAWING NO. 2-S-5.12