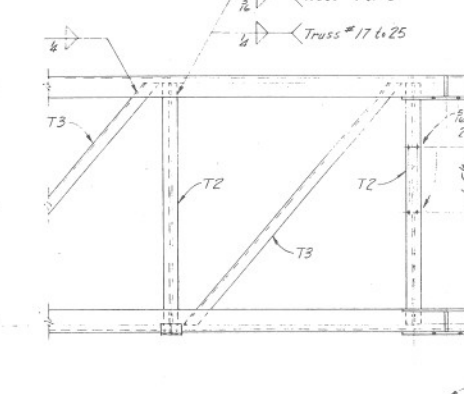
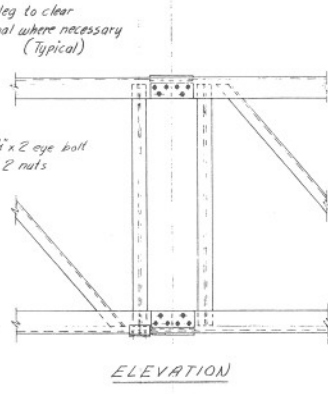
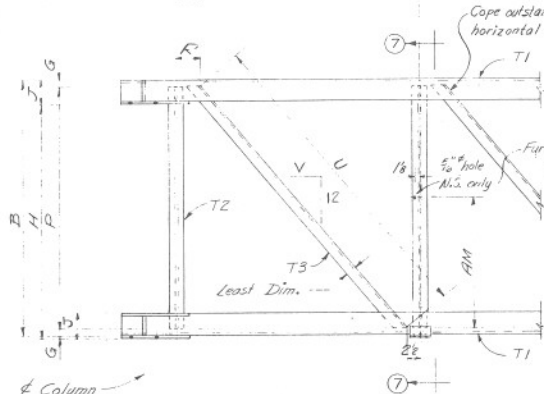
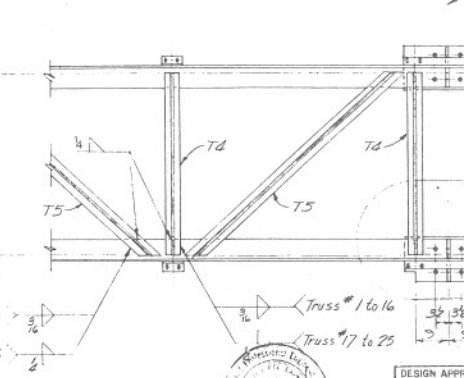
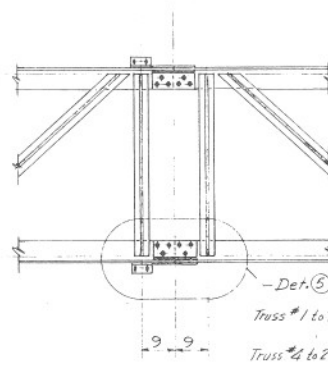
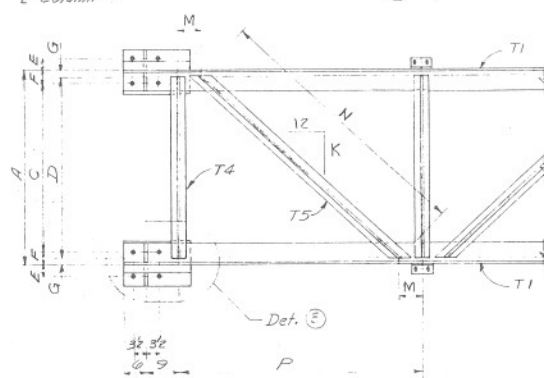


PLAN - TOP CHORD

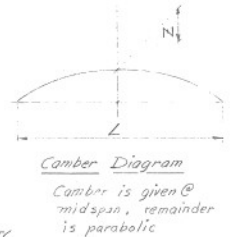


ELEVATION



PLAN - BOTTOM CHORD

SPLICING AND WELDING NOTES
 The location for any shop butt weld splice shall be submitted to the Engineer for approval.
 Butt welds will not be allowed in chord Ls of 40 ft. or less in length or in the areas of high stress.
 All butt welds shall be radiographed.
 Only prequalified welding procedures may be used. Buttwelded joints shall have full penetration welds. Magnetic particle inspection of column web to flange welds shall be required. All butt welds shall be ground flush on both sides full width. Grinding striations shall be parallel to direction of stress.



Camber Diagram
 Camber is given @ midspan, remainder is parabolic



DESIGN APPROVED R.C. Brubaker	STATE OF ARIZONA DEPARTMENT OF TRANSPORTATION DIVISION OF HIGHWAYS STANDARD DRAWINGS	REV. 11-74
APPROVED FOR DISTRIBUTION F.F. [Signature]	OVERHEAD SIGN STRUCTURE TRUSS DETAILS	DRAWING NO. 2-S-5.08

Work this sheet with Std. 2-S-5.09