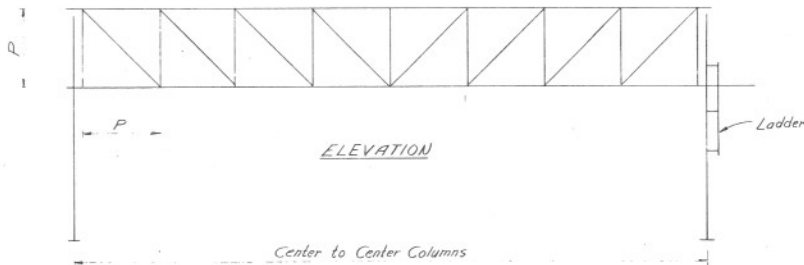


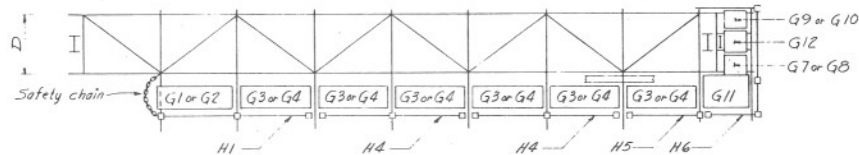
PLAN - TOP CHORD

**NOTE**

Steel for truss chords, including any splice plates, and for column flange and web plates shall meet the Charpy V Notch test requirements of 25 foot pounds at 40° F. Testing shall be in accordance with AASHTO-T 243 (ASTM-A673). Frequency (H) shall be used.



ELEVATION



PLAN - BOTTOM CHORD  
Truss #1 to 3 (B panels)

Traffic ↑

**GENERAL NOTES:**

Construction - Arizona Dept of Transportation Standard Specifications, 1982 edition, revised to date.  
 Design - A.A.S.H.T.O. specifications for the Design and Construction of Structural Supports for Highway Signs, 1975, and A.A.S.H.T.O. specifications for Highway Bridges, 1973.  
 Stresses - Class "S" concrete -  $f_c = 3000$  p.s.i.  
 Reinforcing and structural steel -  $f_s = 20,000$  p.s.i.  
 Maximum footing soil pressure =  $1/2 T$  per sq. ft.  
 Structural Steel shall conform to A.S.T.M. A36 unless noted.  
 All concrete shall be Class "S".  
 Reinforcing steel shall conform to A.S.T.M. A-615 Grade 40

All bolts, nuts, washers, and grating clips other than high strength and anchor bolts shall be zinc or cadmium plated steel. Truss to column connections and field splice connections shall have  $1/2$ " holes  $1/8$ " high strength bolts. High strength bolts and washers shall conform to A.S.T.M. A-325. Minimum bolt tension for  $1/2$ " high strength bolts shall be 39,000 lbs.

All welding shall conform to the Structural Welding Code of the American Welding Society AWS-D11-80 with latest revisions and as modified by the AASHTO Standard Spec. For Welding of Structural Steel Highway Bridges - latest edition. The columns shall be set plumb and true. See Traffic Engineering plans for specific location and elevation.

Paint and painting shall conform to Standard Specifications. Contact surfaces shall not be painted. Structural steel, shop paint 1<sup>st</sup> coat #1, shop paint 2<sup>nd</sup> coat #2, and 3<sup>rd</sup> coat #3. The 2<sup>nd</sup> and 3<sup>rd</sup> coats shall be applied after field erection when there is little or no paint hazard to the traveling public as determined by the Engineer.

For field identification of erection marks, members shall be tagged, metal die stamped or painted. Grind  $1/4$ " radius on burned edges of column flanges,  $3/8$ " column cap plate,  $3/8$ " and  $1/2$ " column bracket plates. For dimensions with letter designations see S.D.s. 2-5-5.07 and 2-5-5.11. For details of grating starting with the letter G, and handrail starting with the letter H, see S.D.s. 2-5-5.12 through 2-5-5.15.

Maximum sign area = 500 sq. ft.  
 Maximum sign height = 10'-0"  
 Minimum sign height = 5'-0"



DESIGN APPROVED <i>R.C. [Signature]</i>	STATE OF ARIZONA DEPARTMENT OF TRANSPORTATION DIVISION OF HIGHWAYS STANDARD DRAWINGS	REV 11-74 11-80
APPROVED FOR DISTRIBUTION <i>E.P. [Signature]</i>	OVERHEAD SIGN STRUCTURE 8 PANEL TRUSS # 1 TO # 3 ONE WAY TRAFFIC	DRAWING NO. 2-S-5.01

DATE	BY	REVISION
11-74	...	...
11-80	...	...
11-81	...	...
11-82	...	...