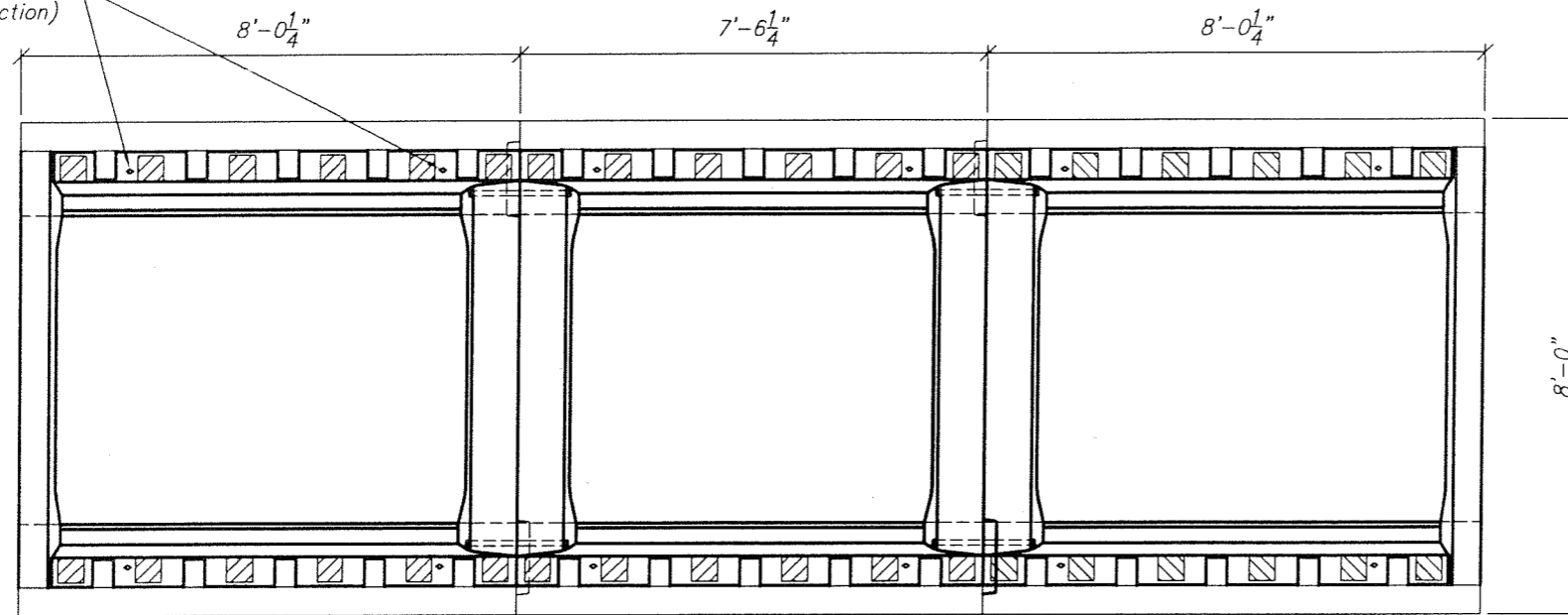


| REV | DESCRIPTION | BY | DATE |
|-----|---------------------------------------|----|----------|
| A | Revised General Notes | FB | 5/21/03 |
| B | Changed Title Block | AT | 12/11/06 |
| C | Changed General Note 6, Added Inserts | AT | 4/14/10 |

(12) 3/4" Inserts
For Grill Clamps
(4 Each Section)



Cattleguard End Section

Cattleguard Center Section
(Quantity as Needed)

Cattleguard End Section

Plan View



Structural Only

STRUCTURAL NOTES:

- 1.) CONCRETE: 28 DAY COMPRESSIVE STRENGTH $F'_c = 4500$ PSI
- 2.) REBAR: ASTM A-615 GRADE 60
- 3.) MESH: ASTM A-185 GRADE 65
- 4.) LOADS: HS20-44 W/30% IMPACT PER AASHTO
- 5.) DESIGN: ACI 318-95 BUILDING CODE
- 6.) THREADED ROD, BOLTS, NUTS, AND WASHERS SHALL CONFORM TO ASTM A-325 AND SHALL BE PLATED IN ACCORDANCE WITH ASTM A-153
- 7.) STEEL BAR AND STRIP SHALL CONFORM TO ASTM A-36

GENERAL NOTES:

- 1.) THE STRUCTURE SHALL NOT BE PLACED ON ALLUVIAL DEPOSITS, QUICK SAND, SOFT, OR WET CLAY, OR WET SAND AND CLAY MIXED
- 2.) THE TOP 6" OF THE SOIL ON WHICH THE STRUCTURE IS PLACED SHALL BE COMPACTED TO A DENSITY OF AT LEAST 95% OF THE MAXIMUM DENSITY DETERMINED IN ACCORDANCE WITH THE REQUIREMENTS OF THE MATERIALS SERVICES, INTERMODAL TRANSPORTATION DIVISION, ARIZONA DEPARTMENT OF TRANSPORTATION
- 3.) EXCAVATION SHALL BE TO A PLANE 3" BELOW GRADE WITH THE FINAL 3" TO BE EXCAVATED BY HAND. THE 3" OF SAND PLACED ON THE COMPACTED SOIL SHALL BE CAREFULLY SCREEDED UNIFORMLY TO GRADE AND COMPACTED
- 4.) CONCRETE GRILL BEAM BEARING SURFACES SHALL BE UNIFORMLY FLAT WITHIN A TOLERANCE OF ± 0.010 "
- 5.) ELASTOMERIC BRIDGE PAD SHALL BE ELASTOMER (NOT LAMINATED), HAVE A DUROMETER HARDNESS OF 55, AND HAVE A THICKNESS TOLERANCE OF $+0.125$ " - 0.000. PADS FOR A SINGLE INSTALLATION SHALL BE OF UNIFORM THICKNESS WITHIN A TOLERANCE OF ± 0.031 . PADS SHALL BE FASTENED TO THE BAR WITH AN APPROVED NON-WATER SOLUBLE EPOXY
- 6.) GRILL UNITS, END POSTS, GRILL CLAMPS, BIKE SAFETY KITS, AND BRACES SHALL BE FABRICATED IN ACCORDANCE WITH A.D.O.T. STD. C-11.10.

ADOT PRIDE PROGRAM
APPROVAL 6/01/2010

| | | | |
|---|---------------------------------|--|---------------------------------|
| | | 411 E. Frye Rd. Chandler, Arizona 85225 Tel: (480) 963-2678 Fax: (480) 899-1937 | |
| | | TITLE: Precast Concrete Cattle Guard With 1'-2" x 7" Male & Female Keys A.D.O.T. Standard H-20 C-11.10 | |
| DESIGNED BY: AT DATE: 2/21/02 | CHECKED BY: FS DATE: 4-22-10 | PROJECT NO.: G2100-1 | SHEET NO.: C |
| THIS DRAWING AND ANY PRINT THEREOF IS THE PROPERTY OF OLDCASTLE PRECAST, INC. THE INFORMATION SHOWN IS CONFIDENTIAL AND THE RECIPIENT AGREES NOT TO USE IN ANY MANNER WHICH WILL BE DETRIMENTAL TO OLDCASTLE PRECAST, INC. COPYRIGHT © 2000 OLDCASTLE PRECAST, INC. | | SCALE: 1/4"=1'-0" | TOTAL SHEETS: 4 SHEET NO.: 1 |