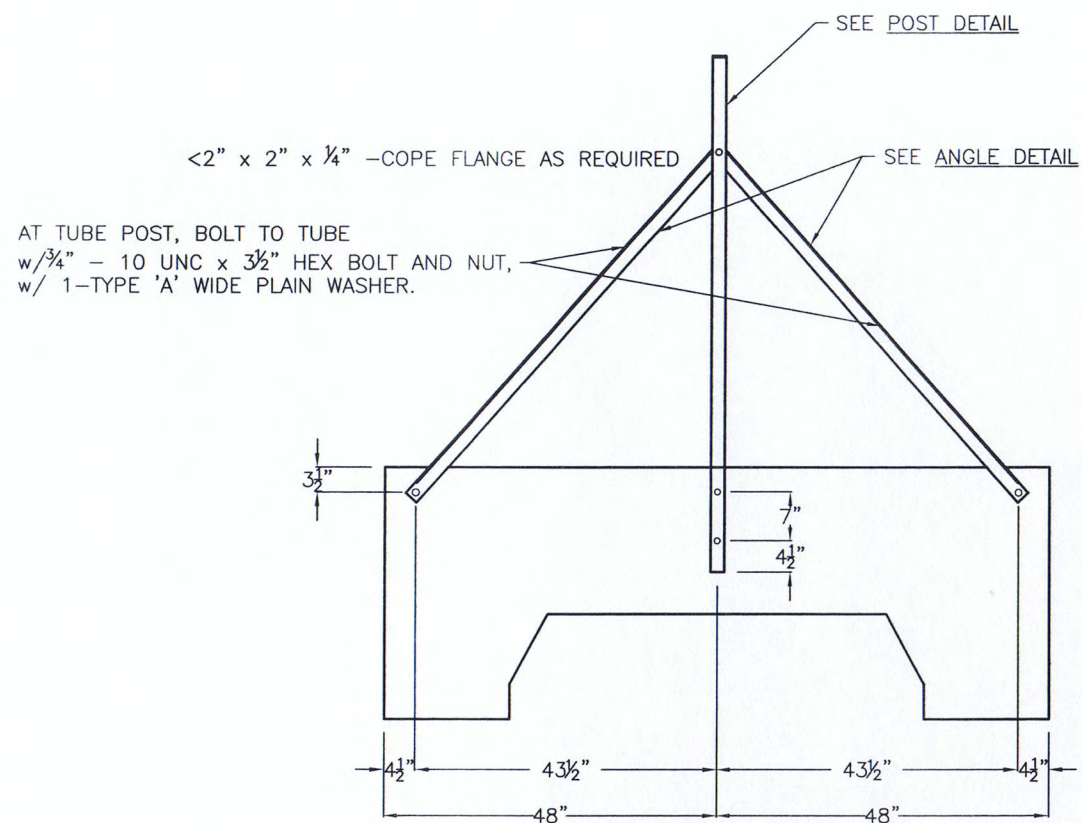
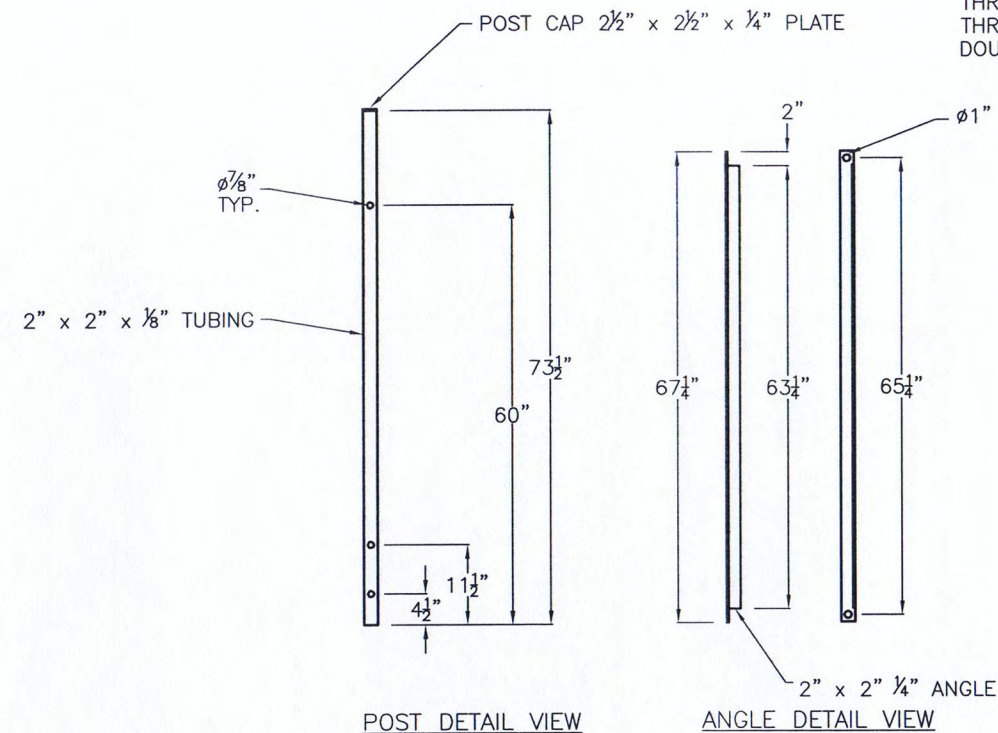


- NOTE:
1. STRUCTURAL STEEL TO ASTM A-36
  2. SQUARE TUBING TO BE A-500 GR.B
  3. BOLTS TO BE A-307.
  4. CONTRACTOR TO APPLY A HEAVY DUTY, HIGH STRENGTH ANAEROBIC THREAD-LOCKING COMPOUND TO THE THREADS BEFORE INSTALLING THE DOUBLE NUTS.



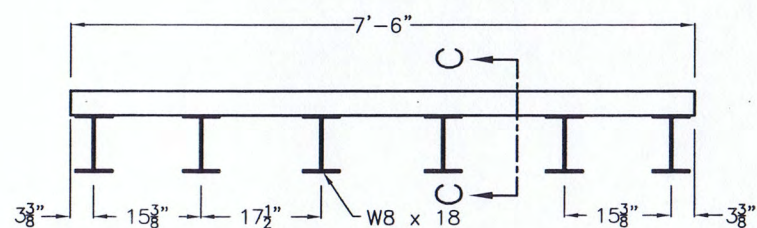
POST AND BRACE ASSEMBLY

AT TUBE POST, BOLT TO TUBE  
w/  $\frac{3}{4}''$  - 10 UNC x  $3\frac{1}{2}''$  HEX BOLT AND NUT,  
w/ 1-TYPE 'A' WIDE PLAIN WASHER.

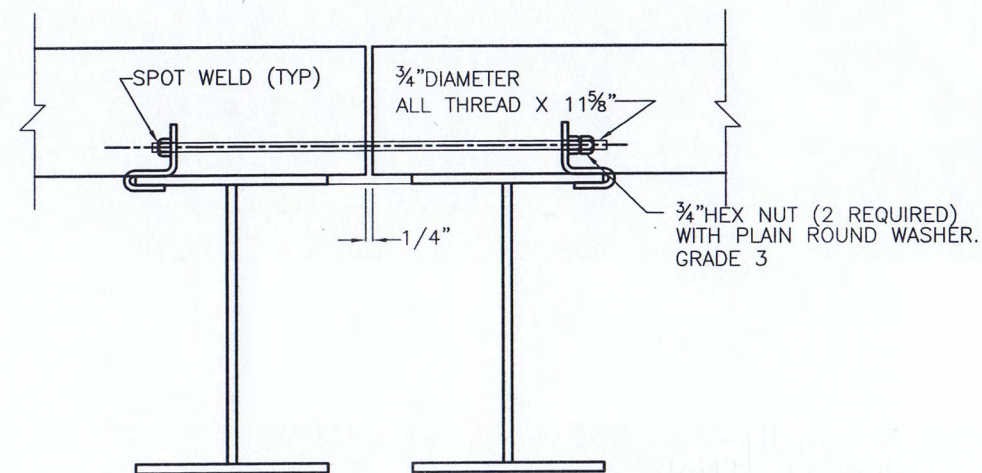


POST DETAIL VIEW

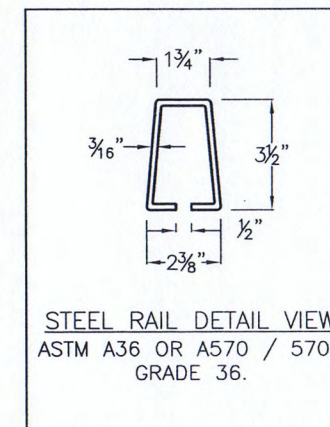
ANGLE DETAIL VIEW



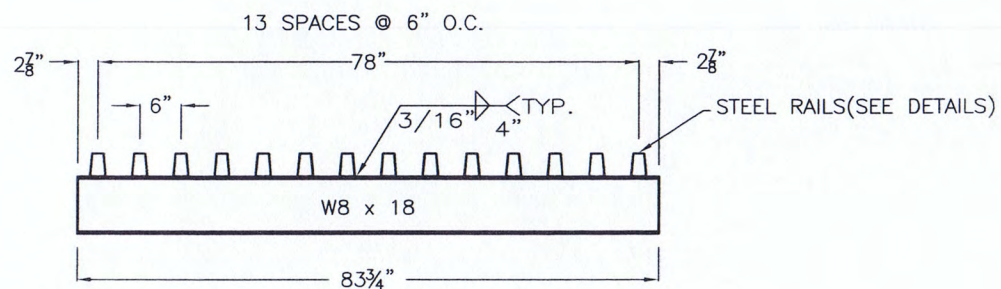
TRAFFIC GRILL ELEVATION



GRILL CLIP DETAIL



STEEL RAIL DETAIL VIEW  
ASTM A36 OR A570 / 570M  
GRADE 36.



SECTION C-C VIEW

ALL STRUCTURAL STEEL SHALL RECEIVE ONE SHOP COAT OF A.D.O.T. PAINT NUMBER 1, NOT LESS THAN 2 MILS. DRY.



*David M. Niese*  
9/30/12

ALL REINFORCING SHALL HAVE A MINIMUM OF 2 INCHES OF CLEAR COVER, UNLESS NOTED OTHERWISE

|                                 |  |               |  |
|---------------------------------|--|---------------|--|
| ARIZONA DEPT. OF TRANSPORTATION | US CONCRETE PRECAST GROUP  |               | 2410 W. Broadway<br>Phoenix, Arizona 85041<br>Phone: 602.268-0228<br>Fax: 602.243-5950 |
|                                 | TITLE<br>CATTLEGUARD FOUNDATION<br>POST, BRACE AND GRILL DETAILS |               |  |
|                                 | DWG. NO. ADOT - CGF  | DATE          | 09-14-09   |
| 10-4-2011 general               | DRAWN BY: C.BAGGOTT  | CAT. DWG. NO. | H-C.G./GRILLS  |
| REVISIONS                       | SCALE: N.T.S.  | SHEET         | 5 OF 6   |