

Guidelines for Highways on Bureau of Land Management and U.S. Forest Service Lands 2008



Chapter Overview Presentations

Twelve Chapter Overview presentations supplement the Guidelines document. Chapters 1-11 each have a Chapter Overview and an additional one summarizes appendices A-O.

These self-paced presentations are designed for individual use or for small group presentations where discussion can be accommodated. It is helpful to have the Guidelines document as a reference when viewing the presentations.

The Chapter Overview presentations are available on the ADOT Roadside Development Section website.

<http://www.azdot.gov/business/engineering-and-construction/roadway-engineering/roadway-design-standards-and-guidelines/guidelines-for-highways-on-bureau-of-land-management-and-us-forest-service-lands>

Navigate the Chapter Overview by scrolling through the pages.

Arizona Department of Transportation Guidelines for Highways on Bureau of Land Management and U.S. Forest Service Lands 2008

Chapter 1: Introduction



Acknowledgments:



Arizona Department of Transportation

Guidelines for Highways on Bureau of Land Management and U.S. Forest Service Lands



Steering Committee Members & Contributors

ADOT Members:

LeRoy Brady
Richard Duarte*
Doug Forstie
John Louis*
Mary Viparina
Todd Williams

Contributors:

Thor Anderson
Nicole A. Carpenter
Lonnie Hendrix
Paul Langdale
Siobhan Nordhaugen



BLM Members:

Carol Kershaw*
Angela Mogel

Contributors:
John Reid



USFS

Members:

Marjorie Apodaca
Mathew O'Grady*
Bill Woodward*

Contributors:

Terry Brennan
Rob Ingram



FHWA Members:

Ken Davis
Steve Thomas

Contributors:

Layne Patton

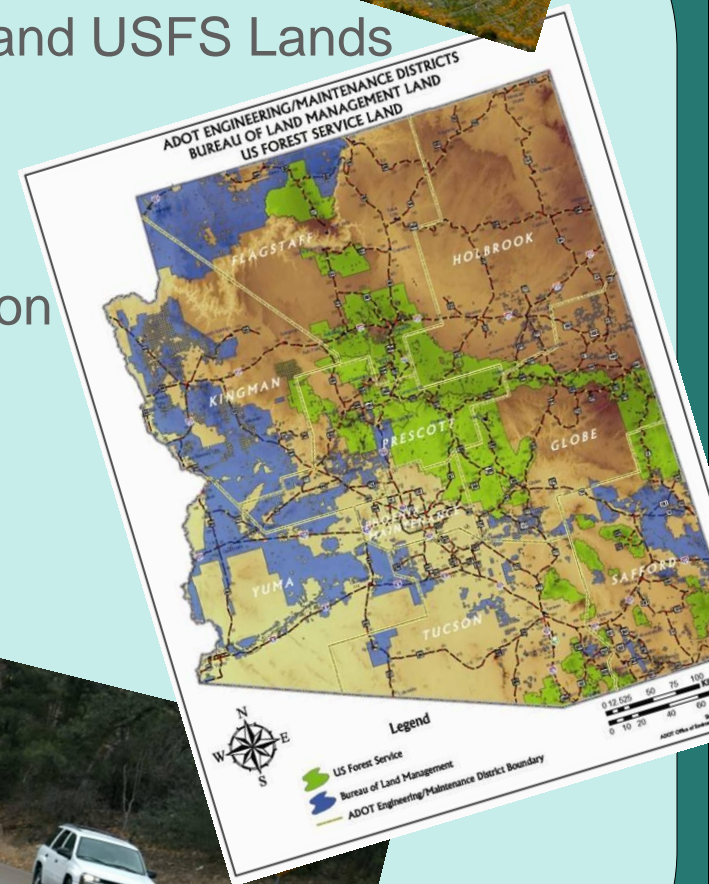


* Past Member

Guidelines Contents



- 1 Introduction**
- 2 ADOT Development Process on BLM and USFS Lands
- 3 Habitat Connectivity
- 4 Roadway Design and Construction
- 5 Major Structure Design and Construction
- 6 Drainage Design and Construction
- 7 Landscape Restoration
- 8 Storm Water and Pollution Control
- 9 Material Sites
- 10 Construction
- 11 Maintenance Operations
- Appendices A - O



After reviewing the Chapter 1 Tutorial you should...



- Know the purpose and intent of the Guidelines.
- Understand how 'Context Sensitive Design' applies to transportation projects.
- Be able to define 'MOU', locate the BLM and USFS MOUs and know why they are important.
- Grasp the essence of the ADOT, FHWA, BLM and USFS Mission Statements.
- Understand the importance of sharing your transportation project experience to ensure quality projects.
- Know how and when to use the Guidelines.
- Be eager to complete the other Guidelines' tutorials!



Chapter 1 Contents



1.1 Purpose and Intent of This Manual

1.2 Memoranda of Understanding

1.3 ADOT, U.S. Forest Service, Bureau of Land
Management and Federal Highway Administration
Missions

1.4 Learning by Example

1.5 Additional Resources



1.1 Purpose and Intent of This Manual



A complex network of highway corridors managed by the Arizona Department of Transportation (ADOT) connects Arizona's diverse landscapes.

These corridors consist not only of the roadway, but also the constructed slopes, bridges, drainage structures, fencing, signs and intersections associated with the roadway.

BLM/USFS manage the full range of natural and cultural resources on agency lands. Where highway corridors are constructed within BLM/USFS boundaries, these agencies seek to minimize and mitigate highway-related disturbances to these resources.

It is important to integrate resource management concerns into the planning, design, construction and maintenance of highway corridors.

FHWA defines this integration process as Context Sensitive Solutions.



1.1 Purpose and Intent of This Manual

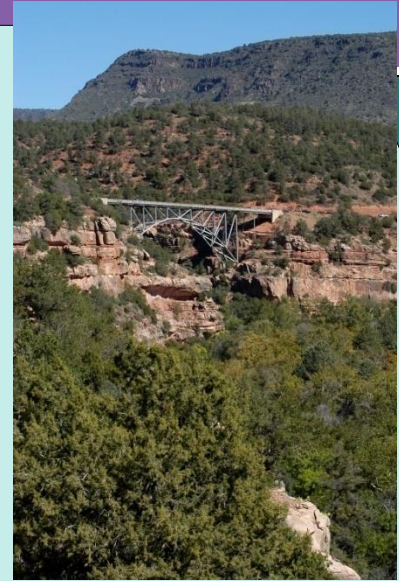


- Provide guidance for design, construction and maintenance of ADOT projects on lands managed by BLM and USFS.
- Describe accepted procedures, and the needs and concerns of each agency to facilitate creation of safe, environmentally sound and aesthetically pleasing highway corridors.
- Communicate philosophy, approach and examples from which new applications and techniques can be developed.



1.2 Memoranda of Understanding

- The **ADOT-FHWA-BLM MOU** and the **ADOT-FHWA-USFS MOU** are critical to the creation of highway corridors as they outline policies and procedures to establish and improve cooperative working relationships.



APPENDIX D
GUIDELINES
APPENDIX D: MOU BETWEEN ADOT, FHWA AZ, AND THE BUREAU OF LAND MANAGEMENT, AZ
Appendix D consists of sections I—X of the ADOT FHWA BLM MOU. The entire MOU is a digital appendix included only with the ADOT website Guidelines document. Access the website document at:
http://www.azdot.gov/Highways/RoadsideDevelopment/ADOTGuidelinesForHighwaysOnBLM_USFSLands.asp



MOU No. AZ-931-0309
AMENDMENT #4

APPENDIX C

APPENDIX C: MOU AMONG ADOT, FHWA AZ, AND THE USDA FOREST SERVICE, SOUTHWESTERN REGION
Appendix C consists of Sections I—X, Addendum Number 1 and Illustration 1: Highway Easement Deed.

Amended
MEMORANDUM OF UNDERSTANDING
AMONG
THE ARIZONA DEPARTMENT OF TRANSPORTATION,
THE FEDERAL HIGHWAY ADMINISTRATION, ARIZONA,
AND THE USDA, FOREST SERVICE, SOUTHWESTERN REGION,
REGARDING
THE CONSTRUCTION, OPERATION, AND MAINTENANCE OF
HIGHWAYS IN AND ALONG

1.3 Agency Mission Statements



- **ADOT:** “To provide products and services for a safe, efficient, cost-effective transportation system that links Arizona to the global economy, promotes economic prosperity and demonstrates respect for Arizona’s environment and quality of life”.
- **FHWA:** “Enhancing mobility through innovation, leadership and public service”.
- **BLM:** “To sustain the health, diversity and productivity of the public lands for the use and enjoyment of present and future generations”.
- **USFS:** “To sustain the health, diversity and productivity of the nation’s forests and grasslands to meet the needs of present and future generations”.



-

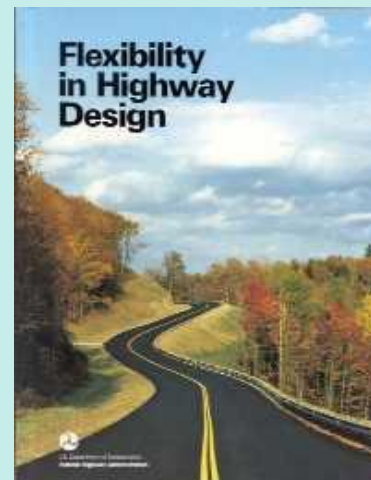


1.5 Additional Resources

- U.S. Department of Transportation Federal Highway Administration: Context Sensitive Design

<http://www.fhwa.dot.gov/environment/csd.htm>

“Context Sensitive Design is a collaborative approach to developing and redesigning transportation facilities that fit into their physical and human environment while preserving the aesthetic, historic, community, and natural environmental values. CSD contributes to community, safety, and mobility.”



Summary



- Use the Guidelines.....
 - Before beginning projects on Federal Lands.
 - As a reference for the planning, design, construction and maintenance of ADOT projects on lands managed by BLM and USFS.
 - To review accepted procedures, and the needs and concerns of each agency to facilitate creation of safe, environmentally sound and aesthetically pleasing highway corridors.
 - As a touchstone throughout projects.
 - As a resource to locate additional information sources.



Knowledge Check: Do you.....



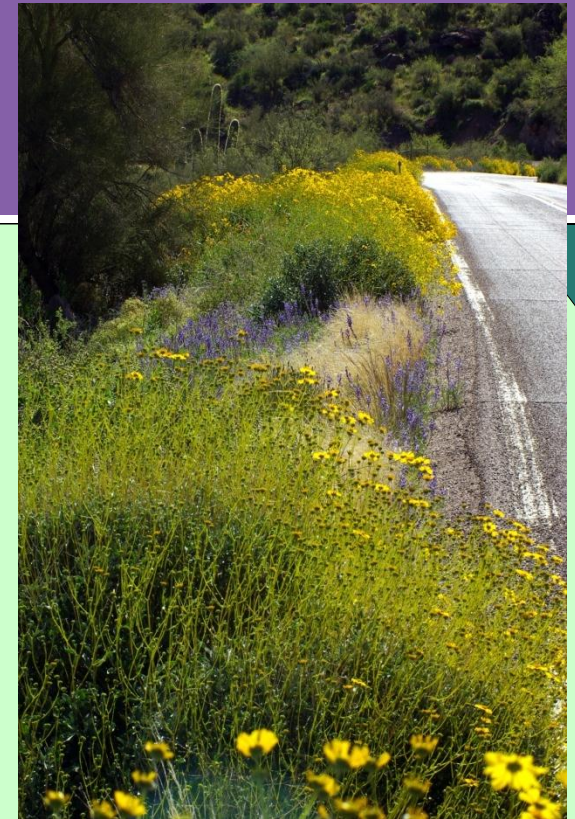
- ✓ Know the purpose and intent of the Guidelines?
- ✓ Understand how 'Context Sensitive Design' applies to transportation projects?
- ✓ Know what 'MOU' stands for and why it's important?
- ✓ Grasp the essence of the ADOT, FHWA, BLM and USFS Mission Statements?
- ✓ Understand the importance of sharing your transportation project experience to ensure quality projects?
- ✓ Know how and when to use the Guidelines?
- ✓ Want to review the other Guidelines' tutorials?



Guidelines: Appendices



- Acronyms and Abbreviations
- Glossary of Terms
- ADOT-FHWA-USFS MOU
- ADOT-FHWA-BLM MOU
- Slope Design Details
- Easement Development
- Section 106 Process on Forest Service Lands
- Typical Blasting Plan Content
- Comparison of Permit Processes for Material Sites
- Signing
- Project Reference Fact Sheet
- Native Plant Salvage & Replanting Evaluation Guidelines
- References and Photography Credits
- Additional Photos (online appendix)
- Document Revision History



Document Availability



Purchase from:
ADOT Engineering Records Section
1655 W. Jackson Room 175
Mail Drop 112F
Phoenix, Arizona 85007-3217
Telephone: 602-712-8216 or 712-7498
Fax: 602-712-3235

For availability and cost:
[http://www.azdot.gov/business/Contracts
andSpecifications](http://www.azdot.gov/business/ContractsandSpecifications)

Download from:
[http://www.azdot.gov/business/engineering-and-construction/roadway-
engineering/roadway-design-standards-and-guidelines/guidelines-for-
highways-on-bureau-of-land-management-and-us-forest-service-lands](http://www.azdot.gov/business/engineering-and-construction/roadway-engineering/roadway-design-standards-and-guidelines/guidelines-for-highways-on-bureau-of-land-management-and-us-forest-service-lands)

Arizona Department of Transportation

Guidelines for Highways on Bureau of Land Management and U.S. Forest Service Lands



