

Arizona Department of Transportation Guidelines for Highways on Bureau of Land Management and U.S. Forest Service Lands 2008



Chapter Overview Presentations

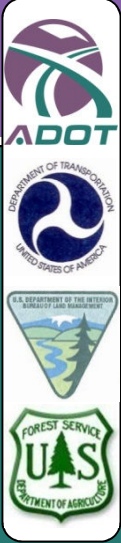
Twelve Chapter Overview presentations supplement the Guidelines document. Chapters 1-11 each have a Chapter Overview and an additional one summarizes appendices A-O.

These self-paced presentations are designed for individual use or for small group presentations where discussion can be accommodated. It is helpful to have the Guidelines document as a reference when viewing the presentations.

The Chapter Overview presentations are available on the ADOT Roadside Development Section website.

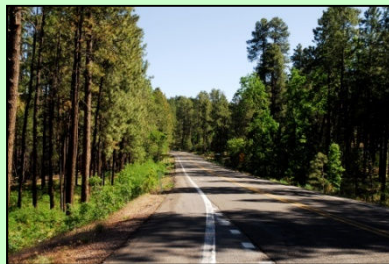
<http://www.azdot.gov/business/engineering-and-construction/roadway-engineering/roadway-design-standards-and-guidelines/guidelines-for-highways-on-bureau-of-land-management-and-us-forest-service-lands>

Navigate the Chapter Overview by scrolling through the pages.

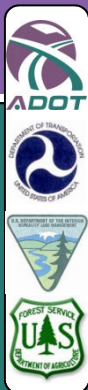


Arizona Department of Transportation Guidelines for Highways on Bureau of Land Management and U.S. Forest Service Lands 2008

Appendices



Acknowledgments:



Arizona Department of Transportation

Guidelines for Highways on Bureau of Land Management and U.S. Forest Service Lands



Steering Committee Members & Contributors

ADOT Members:

LeRoy Brady
Richard Duarte*
Doug Forstie
John Louis*
Mary Viparina
Todd Williams

Contributors:

Thor Anderson
Nicole A. Carpenter
Lonnie Hendrix
Paul Langdale
Siobhan Nordhaugen

FHWA Members:

Ken Davis
Steve Thomas

Contributors:

Layne Patton



BLM Members:

Carol Kershaw*
Angela Mogel

Contributors:

John Reid



USFS Members:

Marjorie Apodaca
Mathew O'Grady*
Bill Woodward*

Contributors:

Terry Brennan
Rob Ingram

* Past Member

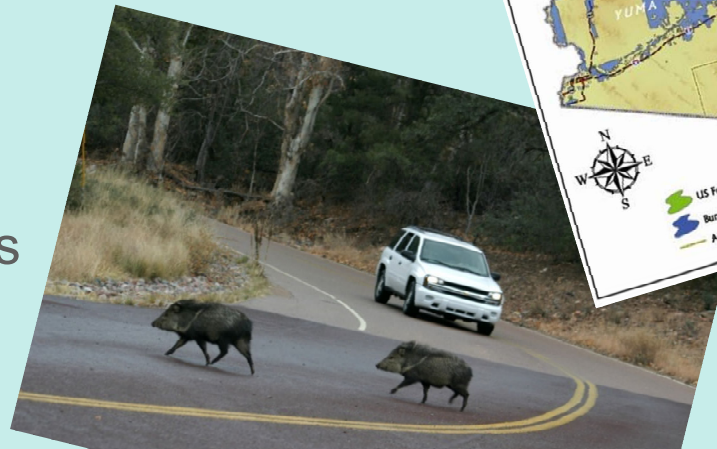
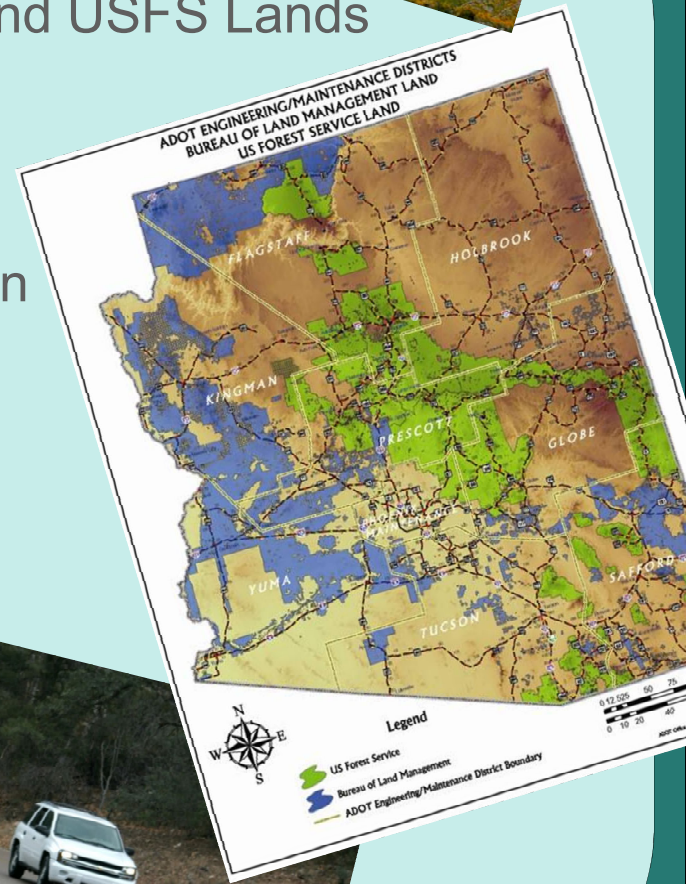
Prepared by Wheat Scharf Associates and the Guidelines Steering Committee

Guidelines Contents



- 1 Introduction
- 2 ADOT Development Process on BLM and USFS Lands
- 3 Habitat Connectivity
- 4 Roadway Design and Construction
- 5 Major Structure Design and Construction
- 6 Drainage Design and Construction
- 7 Landscape Restoration
- 8 Storm Water and Pollution Control
- 9 Material Sites
- 10 Construction
- 11 Maintenance Operations

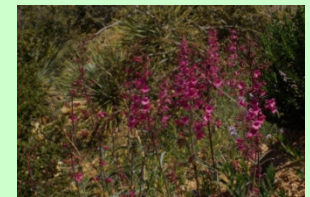
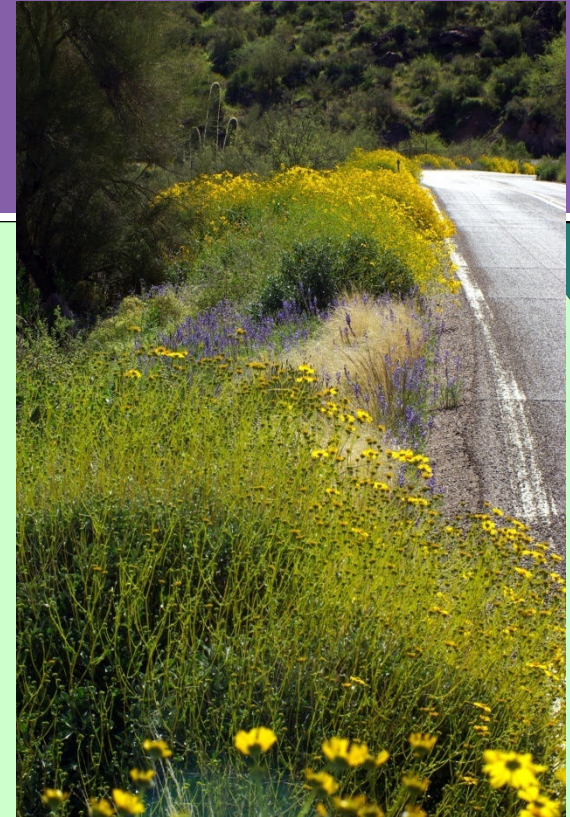
Appendices A - O



Appendices



- A. Acronyms and Abbreviations
- B. Glossary of Terms
- C. ADOT-FHWA-USFS MOU
- D. ADOT-FHWA-BLM MOU
- E. Slope Design Details
- F. Easement Development
- G. Section 106 Process on Forest Service Lands
- H. Typical Blasting Plan Content
- I. Comparison of Permit Processes for Material Sites
- J. Signing
- K. Project Reference Fact Sheet
- L. Native Plant Salvage & Replanting Evaluation Guidelines
- M. References and Photography Credits
- N. Additional Photos (online appendix)
- O. Document Revision History



A: Acronyms & Abbreviations



- A list of acronyms and abbreviations used in the planning, design, construction and maintenance of highways on BLM and USFS lands.
- Do you know these?



FONSI

HED

PS&E

TCE

DCR

ROW

SWPPP

CWA

LOC

NAGPRA

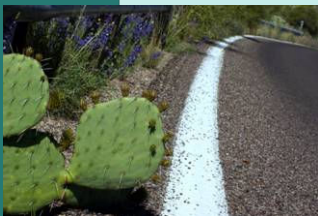
BMP

NHS

EIS

AASHTO

VER



B: Glossary of Terms



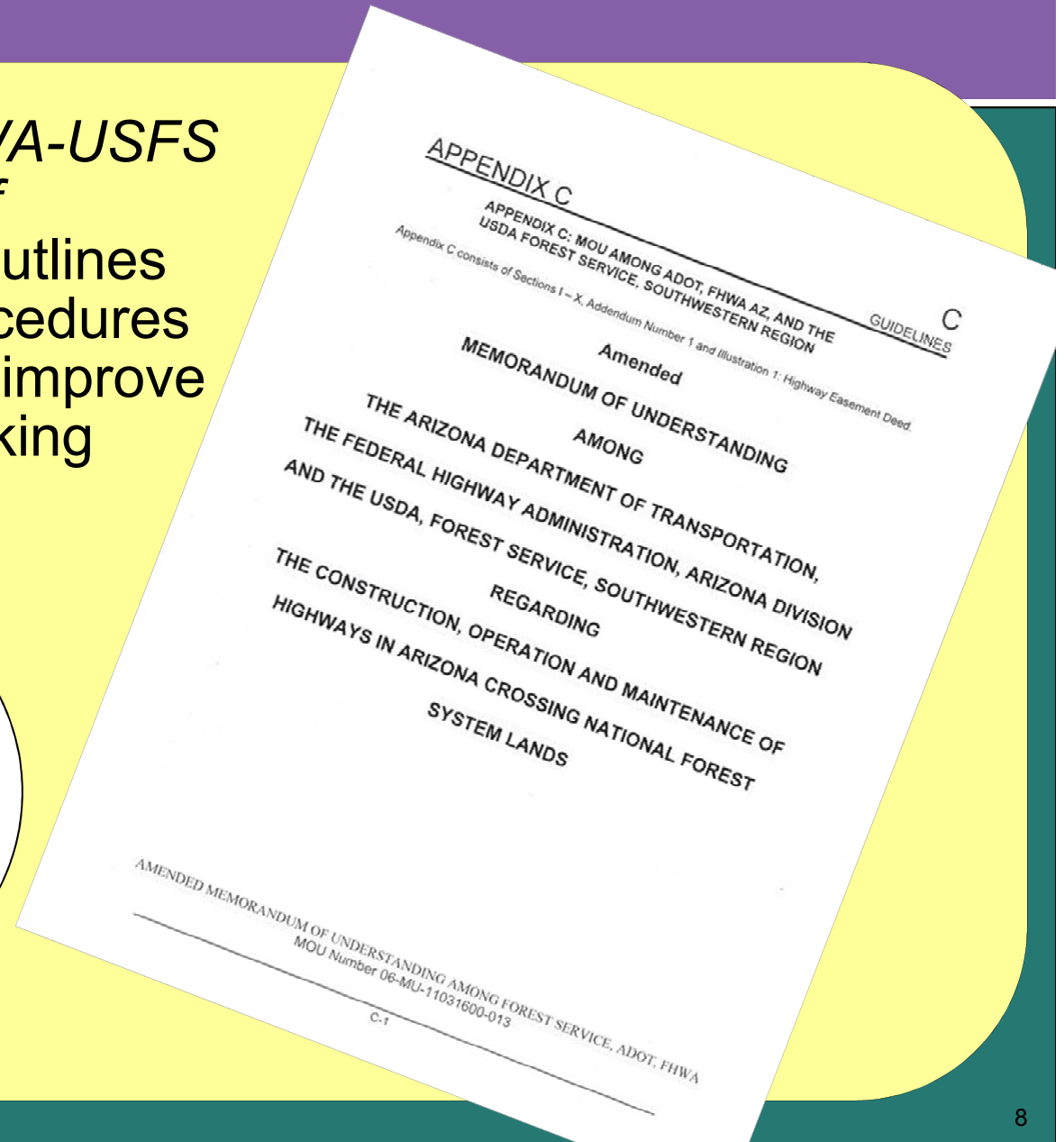
- Definitions of terms used in the Guidelines.
- Sometimes agencies have different definitions for the same term.
 - See Abandonment in Appendix B.
- Can you define these terms:
 - Geotechnical Investigation
 - Mitigation
 - Riparian Area



C: USFS MOU



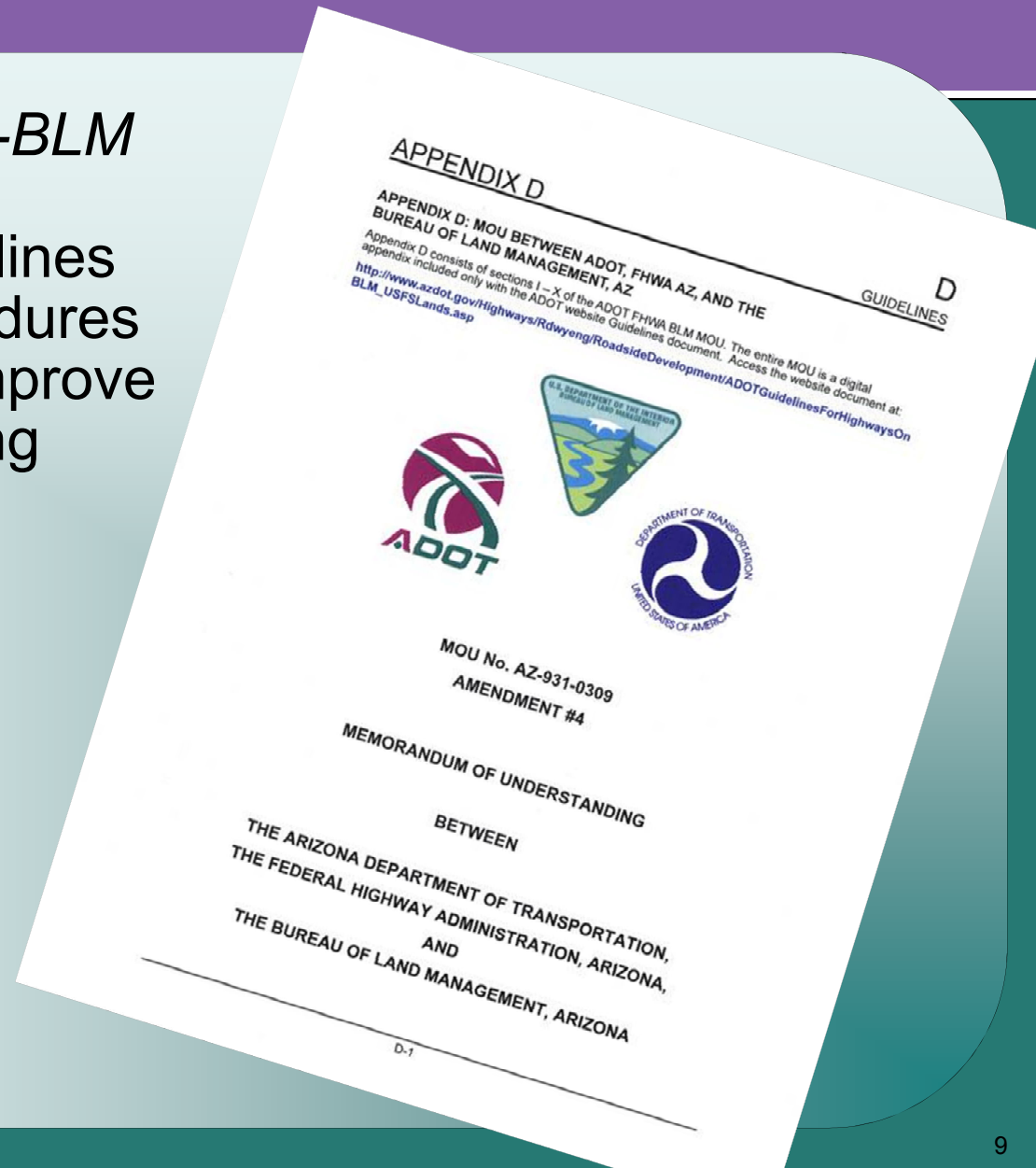
- The *ADOT-FHWA-USFS Memorandum of Understanding* outlines policies and procedures to establish and improve cooperative working relationships.



D: BLM MOU



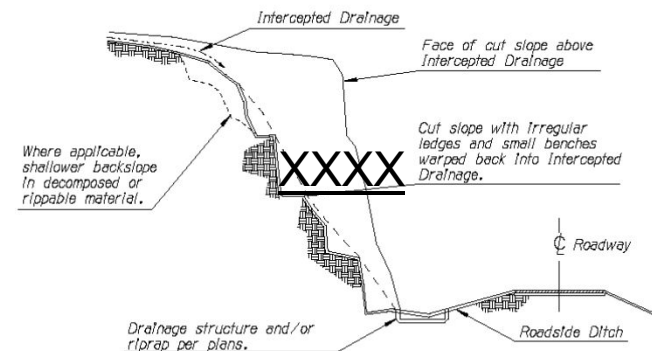
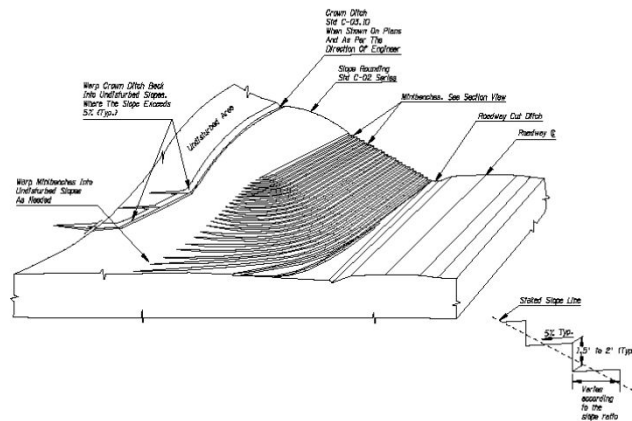
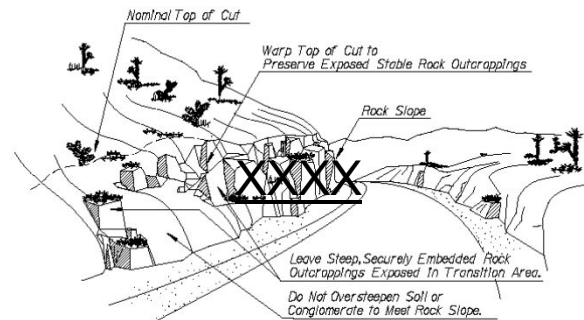
- The *ADOT-FHWA-BLM Memorandum of Understanding* outlines policies and procedures to establish and improve cooperative working relationships.



E: Slope Design Details



- ADOT sample details:
 - Minibenching
 - Slope Rounding
 - Rock Cut Transition
 - Intercepted Drainages Concept
 - Cut Slope Concepts
 - Slope Roughening Section



F: Easement Development



- Appendix F discusses both the USFS and the BLM Easement Development Process.
 - Request for Appropriation
 - Agreement to Appropriation
 - Conditions of Appropriations
 - Disagreement to Appropriations
 - Appropriation by Operation of Law
 - Disposal of Title 23 Rights-Of-Way
 - Construction (BLM)
 - Operation, Maintenance, Minor Rehabilitation (BLM)

G: Section 106 Process on USFS Lands



- Section 106 of the National Historic Preservation Act requires Federal agencies to review all actions which may affect a property listed on the National Register of Historic Places, or which may affect a property eligible for listing.
- Appendix G defines the USFS Section 106 Process
 - Consideration of Historic Properties
 - What are Historic Properties
 - The Section 106 Process



H: Typical Blasting Plan Content



- A list of items usually contained in a typical Blasting Plan including:
 - Name and experience of blasting supervisors.
 - Methods for and locations of explosives transportation, storage and use.
 - Traffic control and other public safety precautions.
 - Equipment intended to be used in or support of blasting operations.
- Also a list of items contained in a Specific Blasting Plan including:
 - Station limits of proposed shot.
 - Fly rock control measures.
 - Identification of environmental monitoring method, equipment and location.

I: Comparison of Permit Processes for Material Sites



- In table form this appendix compares, by topic, the permit processes for material sites for BLM and USFS.
- Topics:
 - Regulations
 - Notice
 - Plan
 - Bonding
 - NEPA
 - Non-Compliance
 - Appeals
 - Undue/Unnecessary Degradation

APPENDIX I

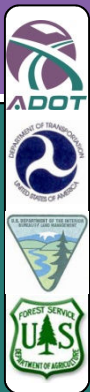
GUIDELINES

APPENDIX I: COMPARISON OF PERMIT PROCESSES FOR MATERIAL SITES

TOPIC	FOREST SERVICE	BUREAU OF LAND MANAGEMENT
Regulations	36 CFR 228, Subpart A (locatable minerals)	CFR 3802 (Wilderness Study Areas - only two in Arizona) 43 CFR 3809 (All other Public Land including Designated Wilderness Areas in conjunction with Wilderness Regulations) also 43 CFR 3809 standards apply to Stock Raising Homestead Lands 43 CFR 3715 All Public Lands where BLM is the managing agency for both the surface and mineral estates.
Casual Use	N/A	Casual use definition applicable only to 43 CFR 3809. For activities below regulatory threshold (e.g., sampling with a rock hammer or short term tent camping less than 15 days), no Notice or Plan required. No definition of casual use under 43 CFR 3802. Occupancies over 15 days in any 90-day period require concurrence under 43 CFR 3715 regardless of surface disturbing activities.
Notice	All activities that might cause surface disturbance require a Notice of Intent to Operate (36 CFR 228.4(a)). Such notice of intent shall be submitted to the District Ranger having jurisdiction over the area in which the operations will be conducted. If the District Ranger determines that such operations will likely cause significant disturbance of surface resources, the operator must submit a proposed Plan of Operations.	Five acres or less total disturbance on lands outside Wilderness, Wild-Scenic Rivers, Areas of Critical Environmental Concern, etc. No Notices allowed under 43 CFR 3802. Contents of a Notice described at 43 CFR 3715.3-2 and 43 CFR 3809.1-3 and 43 CFR 3715 for occupancies. Review time frame for notices is 15 days. Notices that incorporate 43 CFR 3715 occupancies are not subject to this time frame for concurrence of the occupancy.
Plan	If proposed operations will likely cause significant disturbance of surface resources, a Plan of Operations must be submitted (36 CFR 228.4 (a)). Contents of the Plan of Operations are described at 36 CFR 228.4 (c). A plan of operations can be submitted	More than five acres total surface disturbance on lands subject to 43 CFR 3809. Contents of a Plan described at 43 CFR 3715.3-2 and 43 CFR 3802.1-4 and 43 CFR 3809.1-4. All activities that occur in a Wilderness, Wilderness-Study Area, Wild-and-Scenic River, etc. need a Plan of Operation regardless of their

I-1

J: Signing



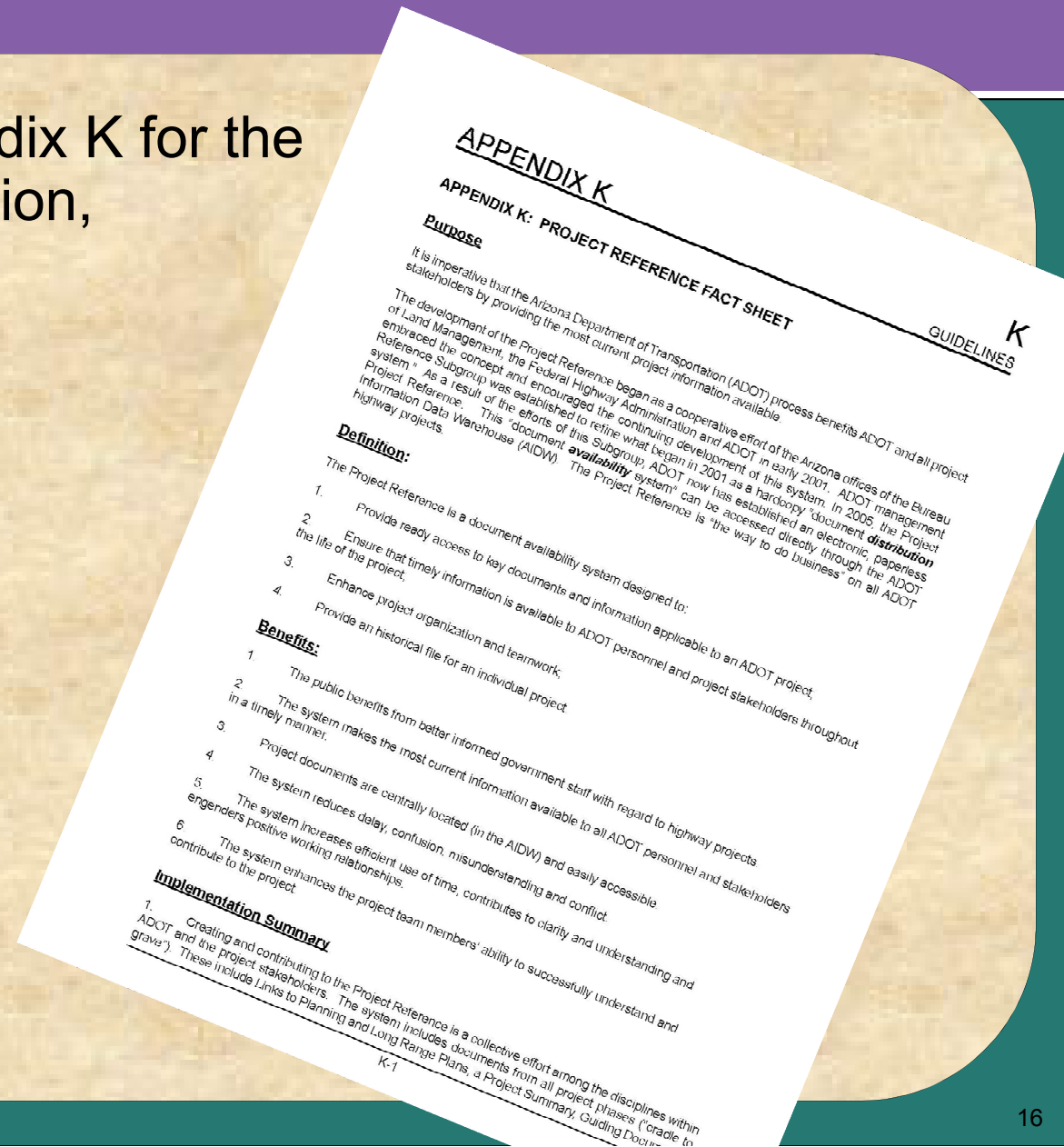
- The Signing appendix is an overview of ADOT/BLM/USFS signing for projects on BLM/USFS lands. Links to signing guidelines and manuals with in-depth technical sign designs and requirements are provided as the ultimate reference for each agency's requirements.
- Topics:
 - Sign Planning
 - Sign Guidelines
 - Types of Signs
 - ADOT Parkways, Historic and Scenic Roadways; BLM Back Country Byways; and USFS Scenic Byways Signing



K: Project Reference



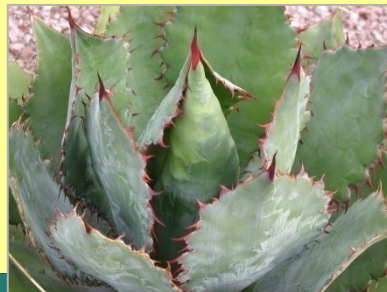
- Refer to Appendix K for the purpose, definition, benefits and implementation information.



L: Native Plant Salvage & Replanting Evaluation Guidelines



- Native Plant Salvage and replanting on a project must be in conformance to the requirements of Arizona Native Plant laws.
- Refer to Appendix L for Non-Discretionary and Discretionary Evaluation Requirements.



M: References and Photography Credits

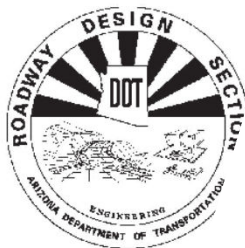


- Appendix M includes Guidelines, Manuals, Standards and/or other references that were used as sources of information for the ADOT Guidelines for Highways on BLM/USFS Lands 2008.
- Other sources listed provide supplemental information to topics discussed in the Guidelines.

ARIZONA DEPARTMENT OF TRANSPORTATION

ROADWAY ENGINEERING GROUP

ROADWAY DESIGN GUIDELINES

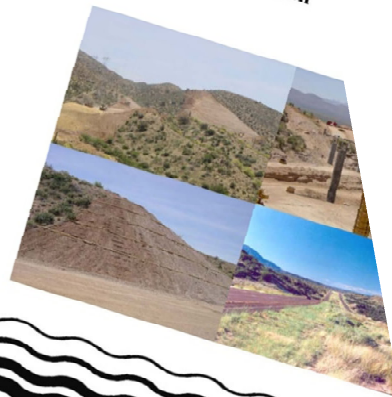


January, 2007

ADOT EROSION
POLLUTION CONTROL
MANUAL



For Highway Design
and Construction



Prelim
ADOT POST-CONSTRUCTION
BEST MANAGEMENT
PRACTICES MANUAL



For Highway Design
and Construction



ADOT MAINTENANCE AND
FACILITIES BEST MANAGEMENT
PRACTICES MANUAL



March 2007

N: Additional Photos



- A digital appendix included with the ADOT website Guidelines document. Photographs will be added to supplement each chapter's text and concepts. Access the website document at:

http://www.azdot.gov/Highways/Roadway_Engineering/Roadside_Development/HwyBLM_USFS.asp

- Contact ADOT Roadside Development Section if you have photos to contribute.

- APPENDIX O
- O
-
- GUIDELINES

This table describes changes to the Arizona Department of Transportation Guidelines for Highway Bureau of Land Management and U.S. Forest Service Lands, 2008.

[illegible]

- 20

Conclusion



- Use the Guidelines.....
 - Before beginning projects on Federal Lands.
 - As a reference for the design, construction and maintenance of ADOT projects on lands managed by BLM and USFS.
 - To review accepted procedures, and the needs and concerns of each agency to facilitate creation of safe, environmentally sound and aesthetically pleasing highway corridors.
 - As a touchstone throughout projects.
 - As a resource to locate additional information sources.



Document Availability



Purchase from:
ADOT Engineering Records Section
1655 W. Jackson Room 175
Mail Drop 112F
Phoenix, Arizona 85007-3217
Telephone: 602-712-8216 or 712-7498
Fax: 602-712-3235

For availability and cost:
[http://www.azdot.gov/business/Contracts
andSpecifications](http://www.azdot.gov/business/ContractsandSpecifications)

Download from:
[http://www.azdot.gov/business/engineering-and-construction/roadway-
engineering/roadway-design-standards-and-guidelines/guidelines-for-
highways-on-bureau-of-land-management-and-us-forest-service-lands](http://www.azdot.gov/business/engineering-and-construction/roadway-engineering/roadway-design-standards-and-guidelines/guidelines-for-highways-on-bureau-of-land-management-and-us-forest-service-lands)

Arizona Department of Transportation

Guidelines for Highways on Bureau of Land Management and U.S. Forest Service Lands



