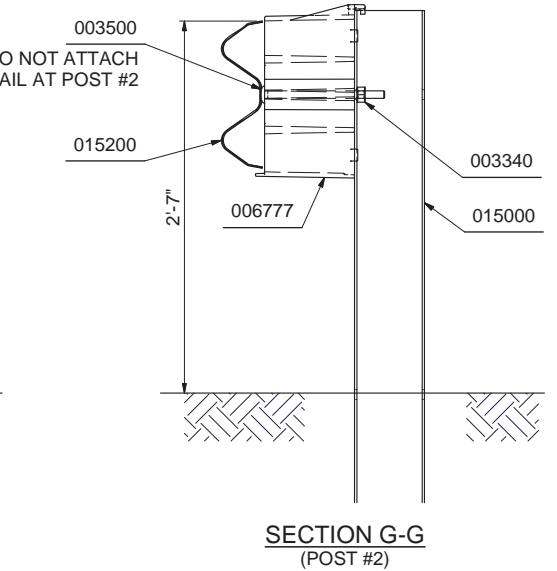
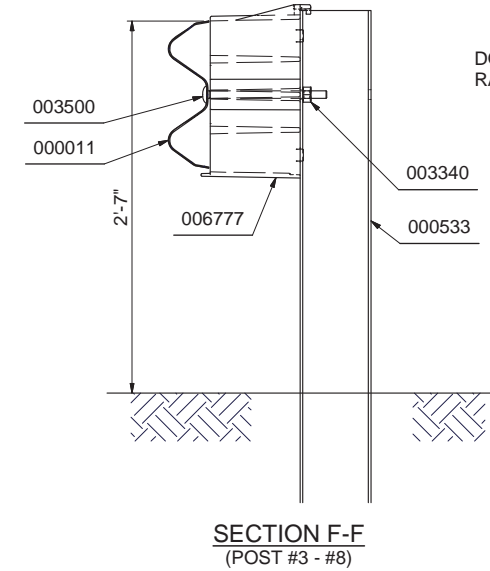
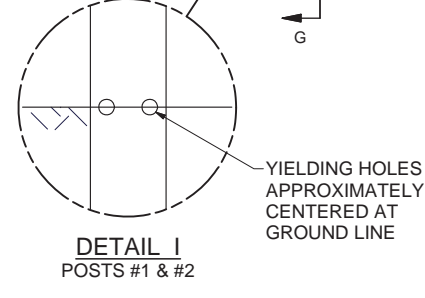
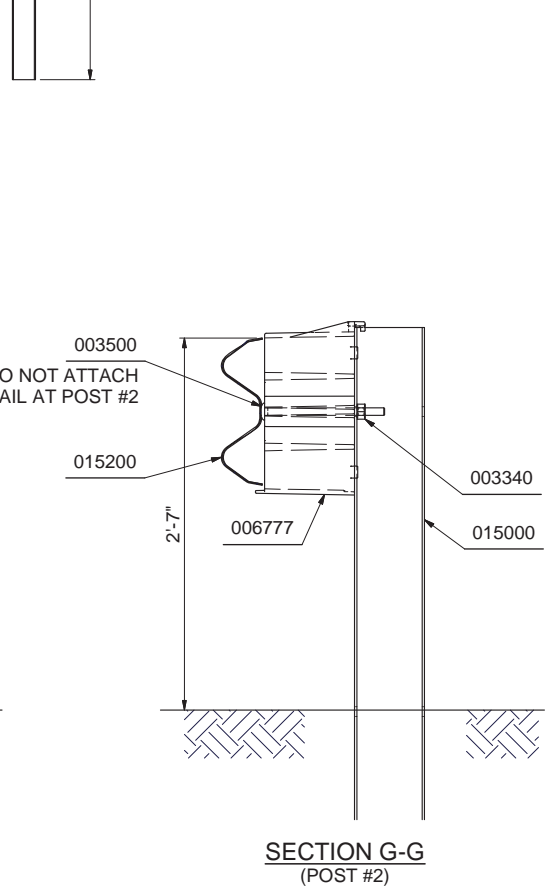
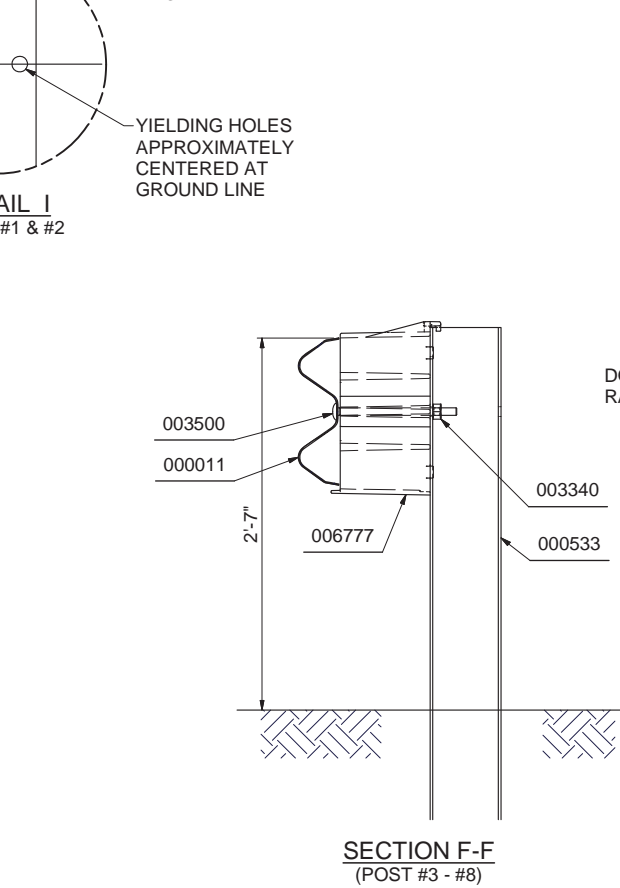
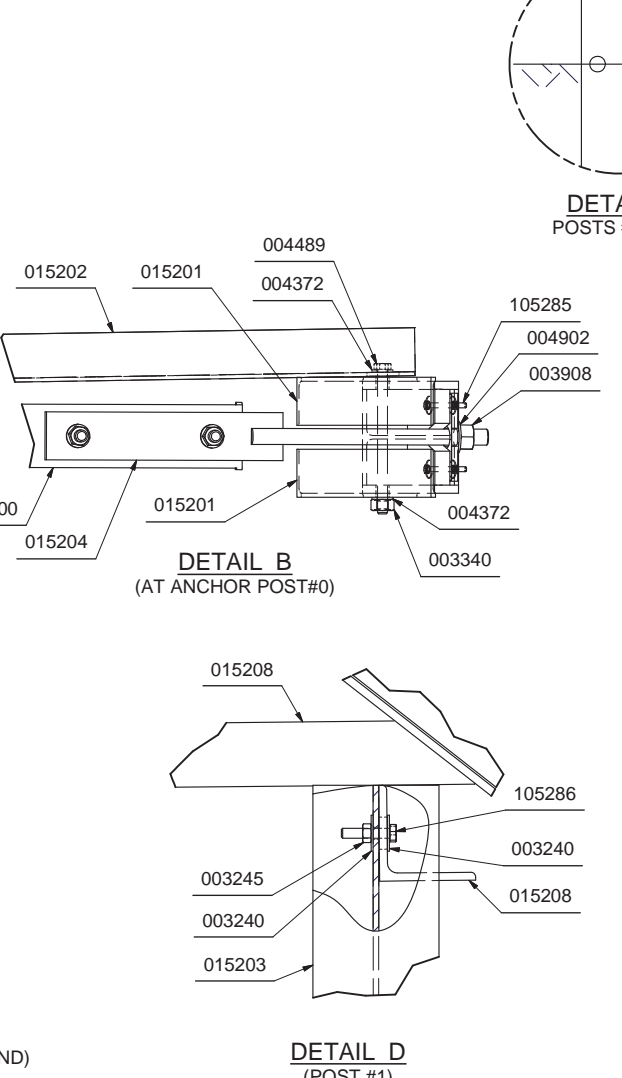
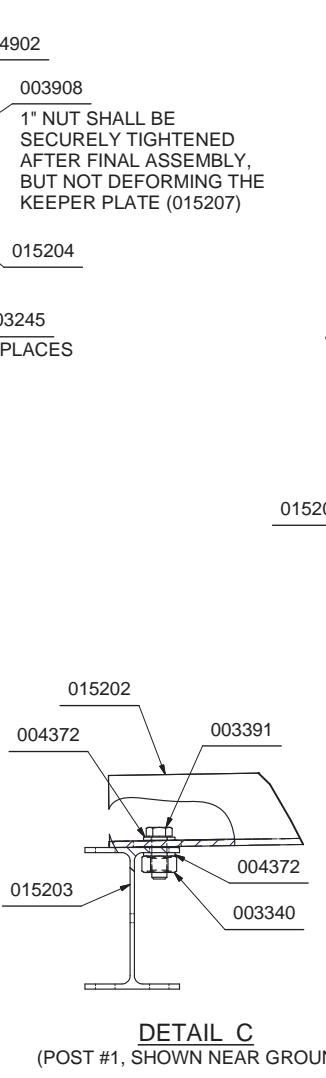
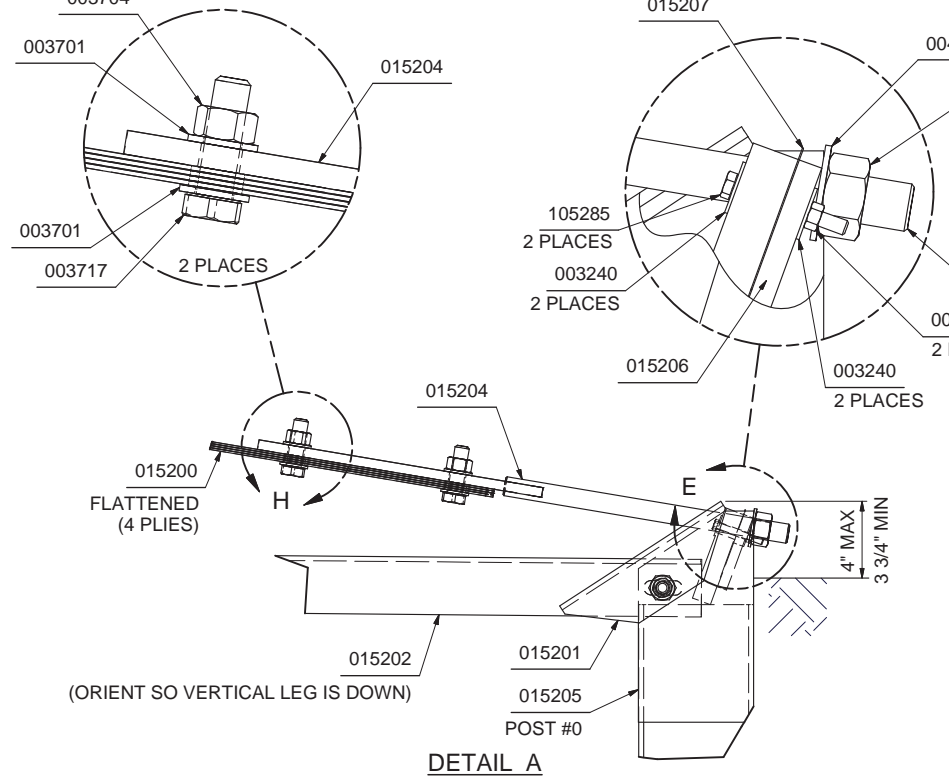
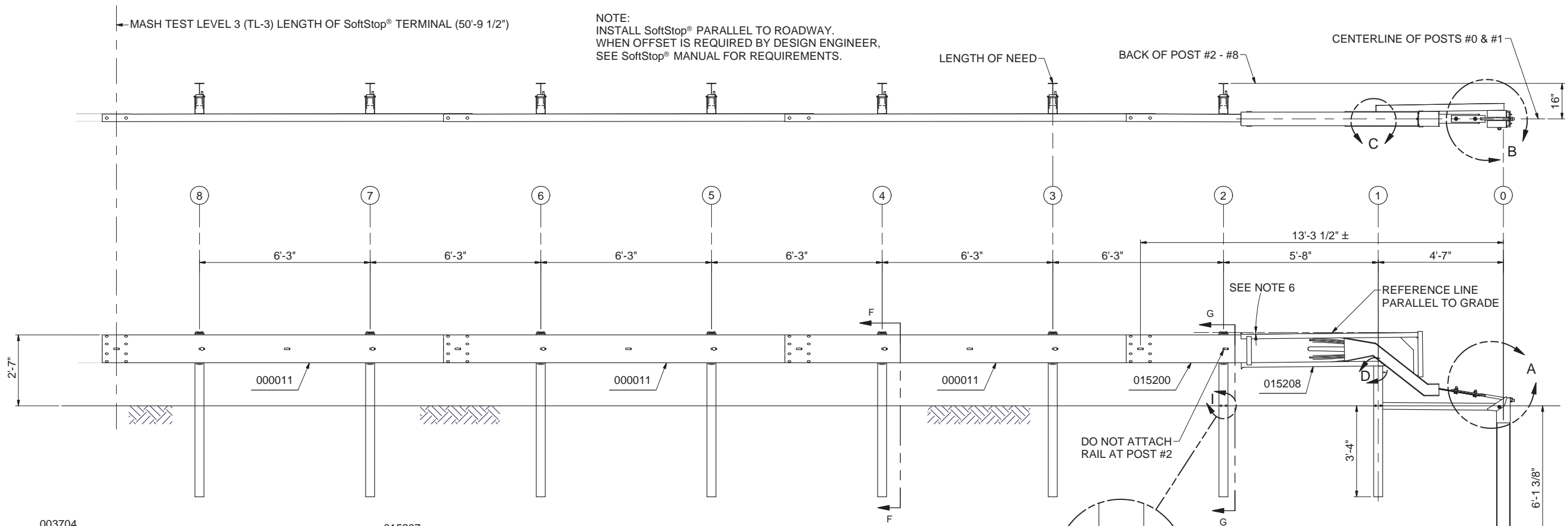


PARTS LIST		
PART NO.	QTY.	DESCRIPTION
000011	3	12/12/6/3/1.5/S
000533	6	6'0 POST - W6 x 8.5
006777	7	KING BLOCK
015000	1	6'0 SYT PST/8.5/31" GR HT
015200	1	SFST-ANCHOR G.RAIL 12'-6"
015201	2	SFST-ANCHOR ANGLE
015202	1	SFST-ANGLE STRUT
015203	1	SFST-POST#1 SYTP
015204	1	SFST-ANCHOR PADDLE
015205	1	SFST-POST#0
015206	1	SFST-PLATE WASHER
015207	1	SFST-KEEPER PLATE
015208	1	SFST-IMPACT HEAD
- HARDWARE -		
003240	6	5/16 ROUND WASHER WIDE
003245	3	5/16 HEX NUT
003340	41	5/8" GR HEX NUT
003360	32	5/8"X1.25" GR BOLT
003391	1	5/8"X1.75" HEX BOLT A325
003500	7	5/8 GUARD RAIL BOLT x 10"
003701	4	3/4" ROUND WASHER F436
003704	2	3/4" HVY HEX NUT A563 DH
003717	2	3/4"X2.5" HEX BOLT A325
003908	1	1" HVY HEX NUT A563 DH
004372	4	5/8" WASHER F436
004489	1	5/8"X9" HEX BOLT A325
004902	1	1" ROUND WASHER F436
105285	2	5/16"X2.5" HEX BOLT GRD 5
105286	1	5/16"X1.5" HEX BOLT GRD 5



- NOTES:
- REFER TO SoftStop® ASSEMBLY MANUAL.
 - PROPER SITE GRADING SHOULD BE ACCOMPLISHED IN ACCORDANCE WITH LOCAL SPECIFYING AGENCY GUIDELINES AND THE AASHTO ROADSIDE DESIGN GUIDE.
 - DO NOT ATTACH THE SoftStop® DIRECTLY TO A RIGID BARRIER.
 - UNDER NO CIRCUMSTANCES SHALL THE GUARDRAIL WITHIN THE SoftStop® BE CURVED.
 - MANUFACTURER SUGGESTS CUSTOMER TO PROVIDE REFLECTORIZATION OF THE TERMINAL.
 - IT IS ACCEPTABLE TO INSTALL THE SoftStop® IMPACT HEAD PARALLEL TO THE GRADE LINE OR WITH AN UPWARD TILT. SEE SoftStop® ASSEMBLY MANUAL FOR SPECIFIC DETAILS.

MATERIAL: SEE PARTS LIST	DRAWN: BT	DATE: 11/14/2012	TOLERANCES PER CEMC-THP-SF-001, UNLESS OTHERWISE SPECIFIED. DO NOT SCALE DRAWING	SoftStop® TERMINAL (8" BLOCKS) PLAN, ELEVATION & SECTION MASH TEST LEVEL 3 (TL-3) P/N: 500646B	
FINISH: N/A	CHECKED: BS	DATE: 11/14/2012			
ESTIMATED WEIGHT: 1221.7 lbmass	UNLESS OTHERWISE NOTED, ALL DIMENSIONS ARE IN FEET/INCHES. DIMENSIONS ACCORDING TO ASME Y14.5M-1994 UNLESS OTHERWISE SPECIFIED.		DRIVING: SS 646	SHEET: 1 of 1	© 2012-2015 Trinity Highway Products, LLC. All rights reserved. CEMC-THP-FE-052 Rev B, 9/15/2015