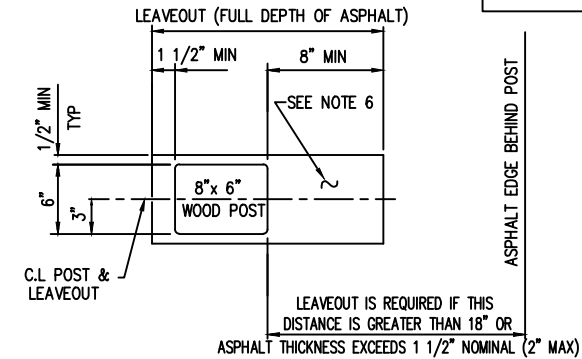
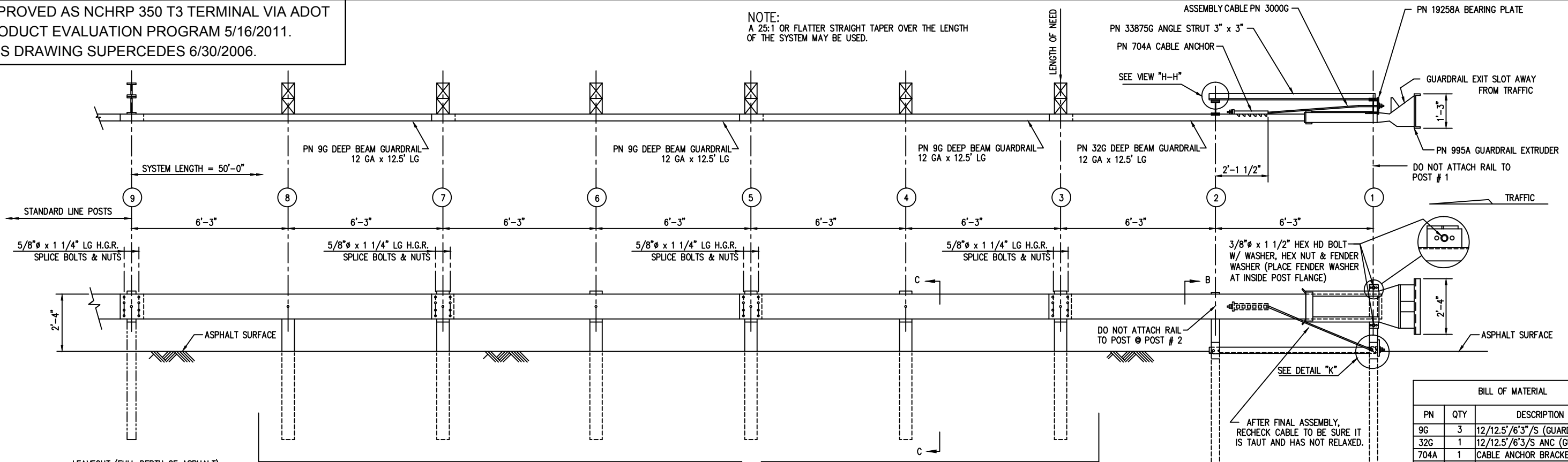


APPROVED AS NCHRP 350 T3 TERMINAL VIA ADOT
 PRODUCT EVALUATION PROGRAM 5/16/2011.
 THIS DRAWING SUPERCEDES 6/30/2006.

NOTE:
 A 25:1 OR FLATTER STRAIGHT TAPER OVER THE LENGTH
 OF THE SYSTEM MAY BE USED.

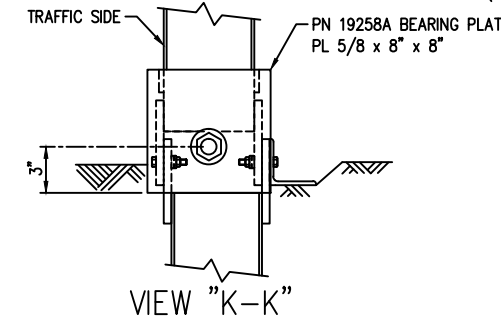
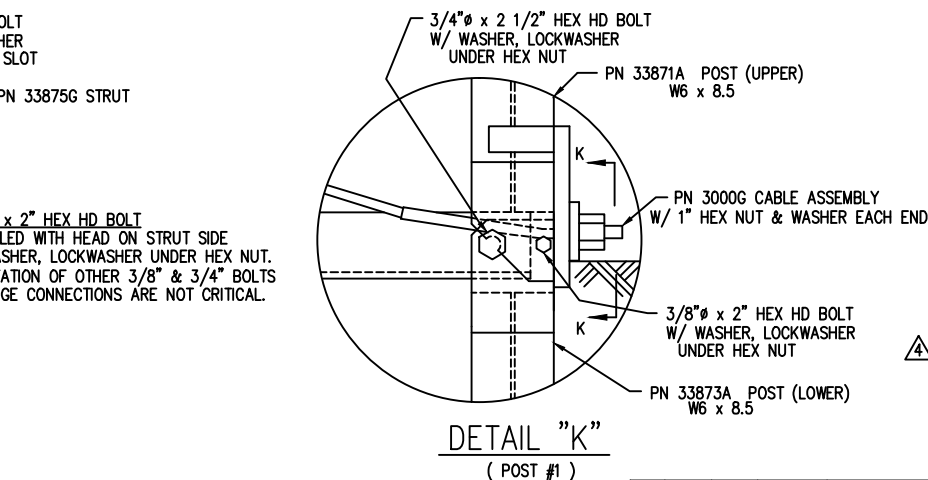
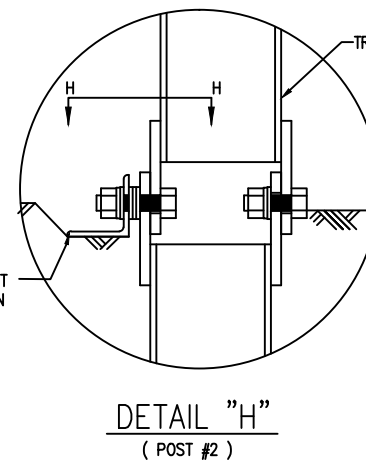
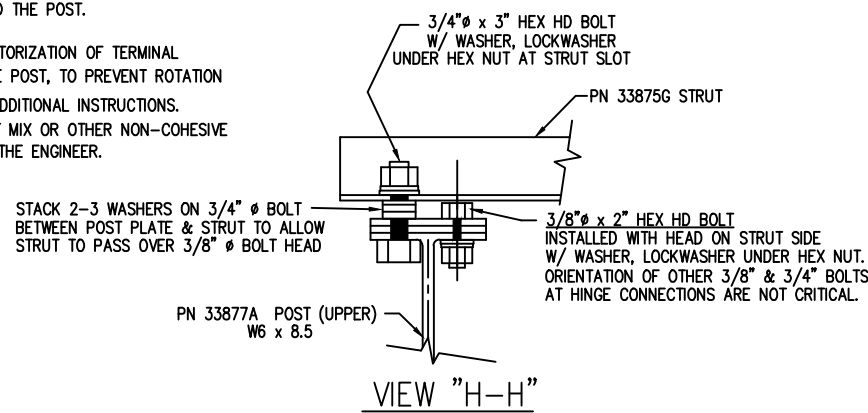
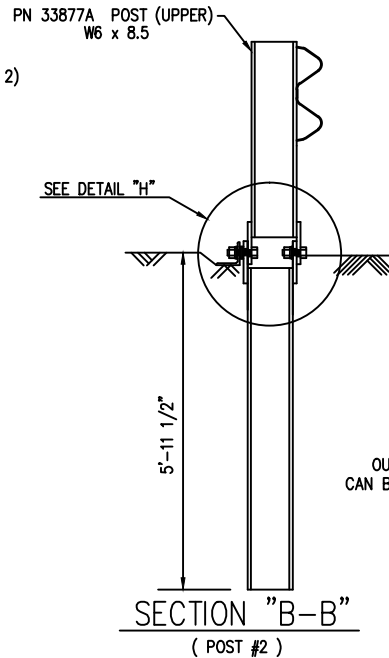
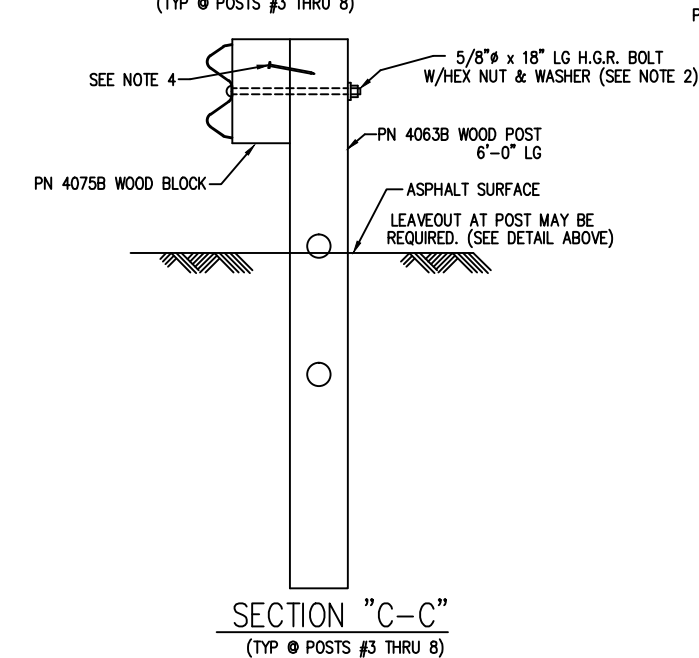


NOTES:

- 1.) DO NOT ATTACH GUARDRAIL TO POST # 1.
- 2.) THE 5/8" FLAT WASHER IS USED UNDER THE NUT, BEHIND THE POST. NO WASHER IS USED AT THE RAIL.
- 3.) MANUFACTURER SUGGESTS CUSTOMER TO PROVIDE REFLECTORIZATION OF TERMINAL
- 4.) TOE-NAIL 3" FROM TOP OF EACH SIDE OF BLOCK, TO THE POST, TO PREVENT ROTATION
- 5.) REFER TO MANUFACTURERS' INSTALLATION MANUAL FOR ADDITIONAL INSTRUCTIONS.
- 6.) LEAVEOUT MATERIAL SHALL CONSIST OF A 1-SACK GROUT MIX OR OTHER NON-COHESIVE MATERIAL (FULL DEPTH OF ASPHALT) AS APPROVED BY THE ENGINEER.

PN 4063B POSTS
 LEAVEOUT IN ASPHALT AT POSTS MAY BE REQUIRED
 (SEE ASPHALT LEAVEOUT DETAIL)

ASPHALT LEAVEOUT DETAIL
 (TYP @ POSTS #3 THRU 8)



PN	QTY	DESCRIPTION
9G	3	12/12.5'/6'3"/S (GUARDRAIL)
32G	1	12/12.5'/6'3"/S ANC (GUARDRAIL)
704A	1	CABLE ANCHOR BRACKET
995A	1	ET-PLUS EXTRUDER
3000G	1	CABLE 3/4 x 6'6"
3300G	6	5/8" WASHER
3340G	38	5/8" HEX NUT
3360G	32	5/8" x 1 1/4" SPLICE BOLT
3580G	6	5/8" x 18" POST BOLT
3701G	7	3/4" WASHER
3704G	4	3/4" HEX NUT
3717G	3	3/4" x 2 1/2" HEX HD BOLT (A325)
3718G	1	3/4" x 3" HEX HD BOLT (A325)
3900G	2	1" WASHER
3910G	2	1" HEX NUT
4063B	6	WD 6'-0 POST 6 x 8
4075B	6	WD BLOCK 1'2 x 6 x 8 DR
4254G	6	3/8" WASHER
4255G	2	3/8" FENDER WASHER (1 1/2 OD)
4258G	4	3/8" LOCKWASHER
4261G	2	3/8" x 1 1/2" HEX HD BOLT (GR-5)
4699G	4	3/4" LOCKWASHER
6321G	4	3/8" x 2" HEX HD BOLT (GR-5)
6405G	6	3/8" HEX NUT
19258A	1	5/8" x 8" x 8" BEARING PLATE
33871A	1	ET PLUS HBA POST #1 TOP
33873A	2	ET PLUS HBA POST #1-#2BOTTOM
33875G	1	6'-6" ANGLE STRUT ET HBA
33877A	1	ET PLUS HBA POST #2 TOP

REV.	CHK'D	BY	DATE	REMARKS
4	BT	LH	4-20-11	REMOVED PN 782, ADDED PN 19258, ADDED LEAVEOUT DETAIL
3	BT	LH	8/01/06	ADDED BOLT STRENGTHS IN BILL OF MATERIAL
2	BT	LH	6/30/06	MOVED STRUT TO BACK-SIDE OF POST; ADDED TOE-NAIL NOTE; PUT POST BOLT THRU RAILS AT POSTS 3, 5, & 7.
1	BT	LH	12/8/03	REVISED TAPER NOTE

ET-PLUS

ET-PLUS - 50'-0" WITH 12'-6" RAIL PANELS & HBA POSTS 1 & 2
 ASPHALTIC CONCRETE INSTALLATION/ARIZONA PLAN, ELEVATION & SECTION

TRINITY HIGHWAY PRODUCTS, LLC.
 2525 STEMMONS FREEWAY
 DALLAS, TX 75207

DRAWN	LH
CHECKED	BT
SCALE	N.T.S.
DATE	01-23-03
ENG. FILE #	SS358-01E
SHT.No.	ET OF 1
DRAWING NO.	SS-358
REV.	4

The drawings and the information shown thereon are copyrighted by Trinity Highway Products (2010) and the sole property of Trinity Highway Products. Neither the drawings nor such information is to be used for any purpose other than that for which it was specifically furnished from Trinity Highway Products, LLC., nor is any reproduction authorized without written permission.

ASPHALTIC CONCRETE INSTALLATION