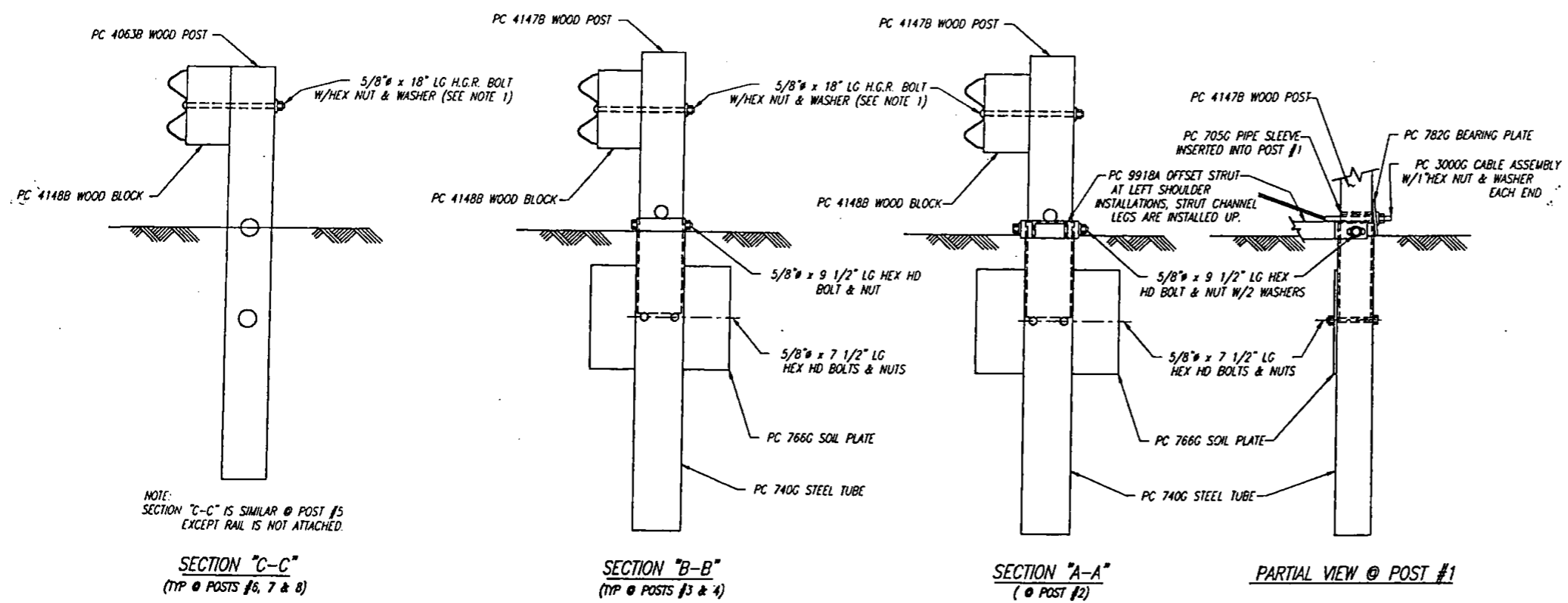


BILL OF MATERIAL		
PC	QTY	DESCRIPTION
60G	1	12/25/63/S (GUARDRAIL)
62G	1	12/25/63/S AN2 (GUARDRAIL)
704A	1	CABLE ANCHOR BRACKET
705G	1	2" x 5 1/2" PIPE
740G	4	4'6" TUBE SLEEVE
766G	4	1/4" x 18" x 24" SOIL PLATE
782G	1	5/8" x 8" x 8" BEARING PLATE
985A	1	ET-2000 EXTRUDER
3000G	1	CABLE 3/4 x 6'6"
3300G	11	5/8" WASHER
3340G	35	5/8" HEX NUT
3360G	16	5/8" x 1 1/4" SPLICE BOLT
3478G	8	5/8" x 7 1/2" HEX HD BOLT
3497G	4	5/8" x 9 1/2" HEX HD BOLT
3580G	7	5/8" x 18" POST BOLT
3900G	2	1" WASHER
3910G	2	1" HEX NUT
4063B	4	WD 6'0" POST 6 x 8
4147B	4	WD 3'9" POST 5 1/2 x 7 1/2
4148B	7	WD BLOCK 1'2 x 5 1/2 x 7 1/2
4228G	2	3/8" x 4" LAG SCREW
9918A	1	6'3" STRUT

- NOTES:
- 1.) THE 5/8" FLAT WASHER IS USED UNDER THE NUT, BEHIND THE POST ONLY. NO WASHER IS USED AT THE RAIL.
 - 2.) THE BREAKAWAY POSTS @ LOCATIONS #5, 6, 7 & 8 MAY BE AS SHOWN OR MAY UTILIZE POSTS AS SHOWN IN OPTION "A" WITH FOUNDATION TUBES. (SEE DRAWING NO SS 240). POSTS @ LOCATIONS #1, 2, 3 & 4 MUST USE FOUNDATION TUBES.
 - 3.) THE ET-2000 WAS TESTED ON FLAT & LEVEL TERRAIN. IT IS NOT RECOMMENDED ON SLOPES.
 - 4.) MANUFACTURER SUGGESTS CUSTOMER TO PROVIDE REFLECTORIZATION OF TERMINAL.

This drawing and the information shown thereon is the sole property of TRINITY INDUSTRIES, INC. Neither the drawing nor such information is to be used for any purpose other than that for which it was specifically furnished by TRINITY INDUSTRIES, INC. nor is any reproduction authorized without written permission.



NOTE: SECTION "C-C" IS SIMILAR @ POST #5 EXCEPT RAIL IS NOT ATTACHED.

1	TP	BT	4-6-95	CHG PC 3264 TO 4228, UPDATED BILL OF MATL
REV.	DATE	BY	DATE	REMARKS
ET-2000				
ET-2000 PLAN, ELEVATION & SECTIONS OPTION "B"				DRAWN: B.T. CHECKED: E.N. APPROVED:
CUSTOMER			P.O. No.	DATE: 4-12-94
TRINITY INDUSTRIES, INC.			ENC. FILE #	SS241R
DALLAS, TX CENTERTOWN, UT			SHIT No.	ET OF 1
GRAND, OH LMA, OH			DRAWING No.	SS 241
FORT WORTH, TX RIZARD, OH			REV	