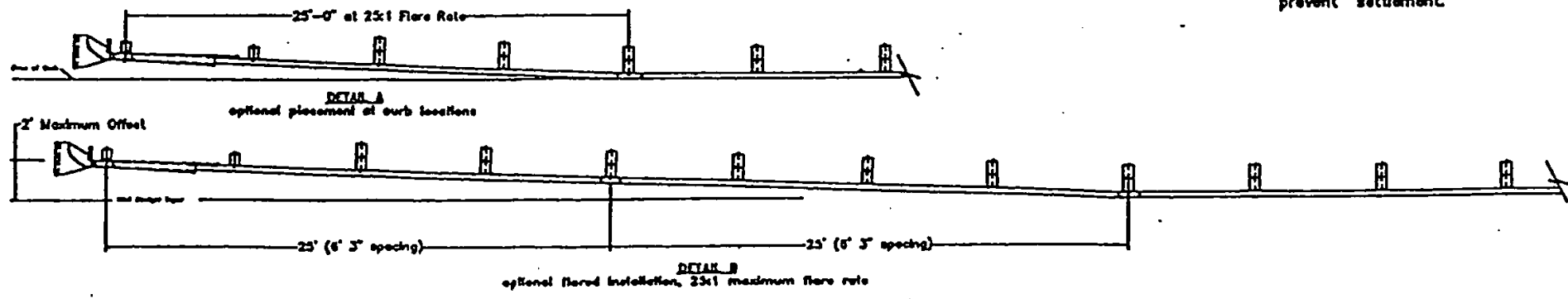
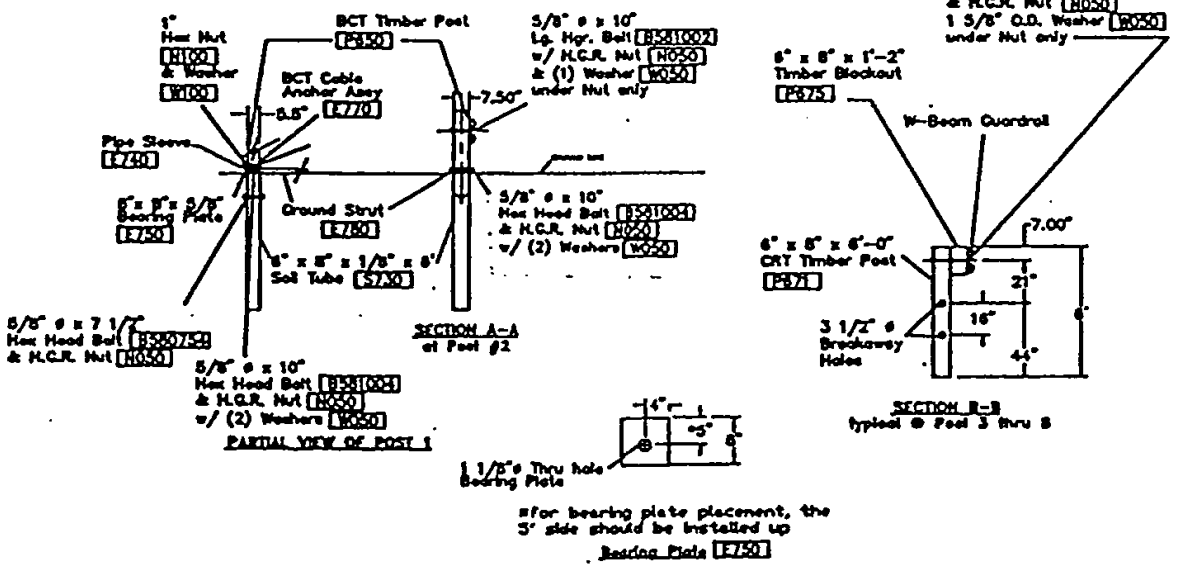
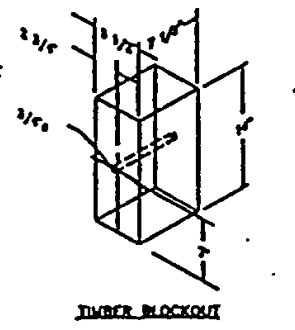
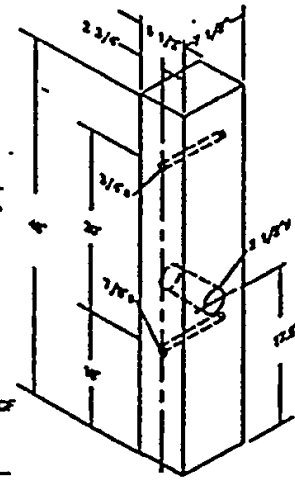
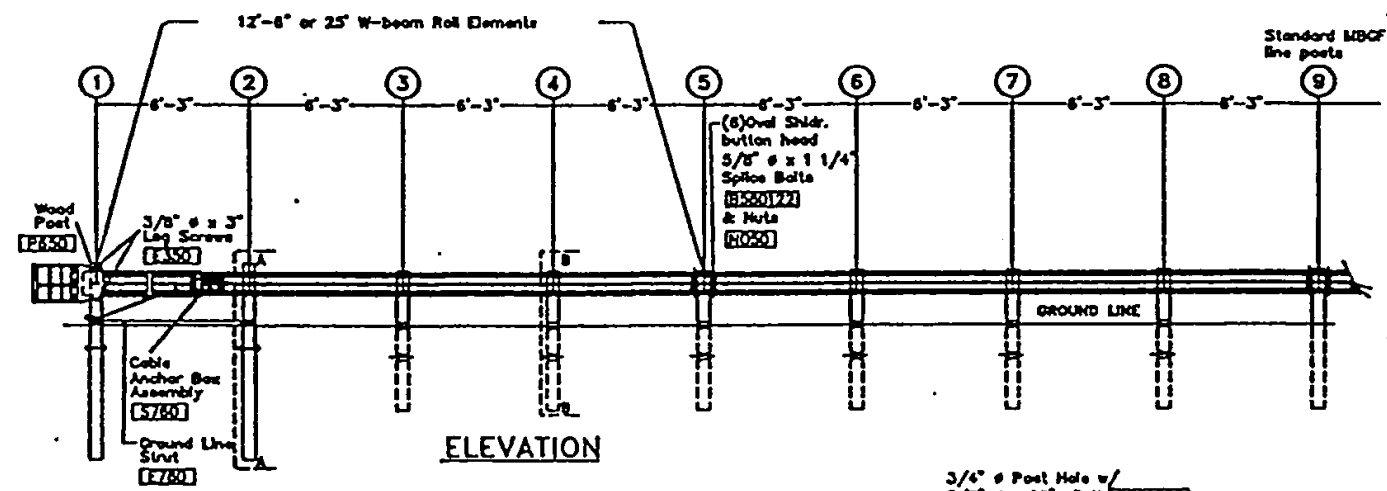
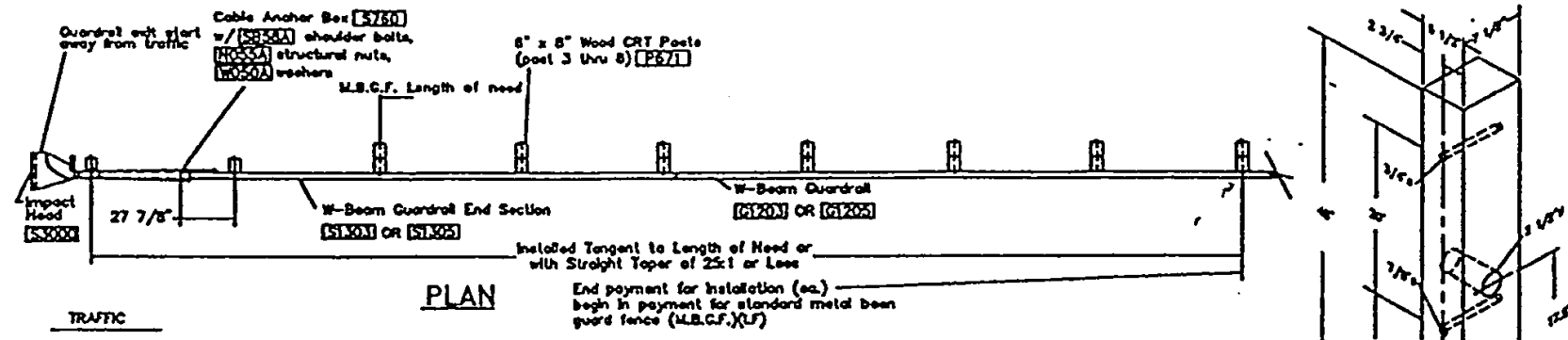


NOTE:
 APPROVED AS NCHRP 350 T3 TERMINAL
 VIA ADOT PRIDE PROGRAM 3-99.



GENERAL NOTES

1. Wood posts are required with the Sequential Kinking Terminal
2. All bolts, nuts, cable assemblies, cable anchors and bearing plates shall be galvanized.
3. When the Sequential Kinking Terminal is selected as the end treatment for MBCF installation, the MBCF can be flared at a rate of 25:1 over the first 50' of the system to prevent the impact head from encroaching on the shoulder. The flare is not required and may be decreased or eliminated for specific installations. A 25:1 flare rate is recommended with curb sections, beginning at post number five and ending at post number one.
4. The soil tube shall not protrude more than 4" above ground (measured along a 5' cord). Site grading may be necessary to meet this requirement.
5. The soil tubes may be driven with an approved driving head. They shall not be driven with the wood post in the tube. If the soil tubes are placed in drilled holes, the backfill material must be satisfactorily compacted to prevent settlement.

6. When rock is encountered during excavation, a 12" # post hole, 20" deep may be used if approved by the engineer. Granular material will be placed in the bottom of the hole approx. 2 1/2" deep to provide drainage. The soil tubes will be field cut to length, placed in the hole and backfilled with adequately compacted material excavated from the hole.
7. The breakaway cable assembly must be taut. A locking device, (vice grips or channel lock pliers) should be used to prevent the cable from twisting when tightening nuts.
8. The wood blockouts shall be "toe nailed" to the rectangular wood posts to prevent them from turning when the wood shrinks.
9. For curb installations, the soil tubes and posts shall be installed at the proper ground elevation behind the curb. The posts will require field drilling new holes to accommodate the roll to the post connecting bolt to maintain the proper height of the rail above the gutter pan. The excess post length above the rail will be removed if directed by the engineer.
10. A special site evaluation should be considered prior to using the Sequential Kinking Terminal where there is less than 25' between the outlet side of the Sequential Kinking Terminal and any adjacent driving lane.

ITEM NO.	QTY	BILL OF MATERIALS
S3000	1	IMPACT HEAD
S1303/S1305	1	W-BEAM GUARDRAIL END SECTION 12.5' or 25'
G1203/G1205	3/1	W-BEAM GUARDRAIL, 12 GA., 12.5' or 25'
S730	2	*FOUNDATION SOIL TUBE, 6" x 8" x 6'
E740	1	PIPE SLEEVE
E750	1	BEARING PLATE, 8" x 8" x 5/8"
S760	1	CABLE ANCHOR BOX
E770	1	BCT CABLE ANCHOR ASSEMBLY
E780	1	GROUND STRUT
P650	2	5.5" x 7.5" x 45" WOOD POSTS
P671	6	6" x 8" x 6" WOOD CRT POST
P675	6	6" x 8" x 14" TIMBER BLOCKOUT
E3151	1	**IMPACT FACE OBJECT MARKER (not shown)
HARDWARE		
B580122	16/32	5/8" x 1 1/4" SPLICE BOLT
B580754	2	5/8" x 7 1/2" HEX BOLT
B581004	2	5/8" x 10" HEX BOLT
B581002	1	5/8" x 10" H.G.R. BOLT (POST 2 ONLY)
B581802	6	5/8" x 18" H.G.R. BOLT (POST 3 THRU 8)
N050	27/43	5/8" H.G.R. NUT (SPLICE 16/32, SOIL TUBES 2, STRUT 2, POST 2, 1; POST 3 THRU 8, 6.)
W050	11	H.G.R. WASHER
N100	2	1" ANCHOR CABLE HEX NUT
W100	2	1" ANCHOR CABLE WASHER
E350	2	3/8" x 3" LAG SCREW
SB58A	8	CABLE ANCHOR BOX SHOULDER BOLTS
N055A	8	1/2" A325 STRUCTURAL NUTS
W050A	16	1 1/16" OD X 9/16" ID A325 STR. WASHER

*6" x 8" x 6" tube is an option and other options are available.
 **not supplied by Road Systems.

**SEQUENTIAL KINKING TERMINAL
 (SKT-350) ASSEMBLY
 2 FOUNDATION TUBE OPTION**

DRAWN/REVISED BY: LS/DS DATE REVISED: 3/3/98 DWG NO.: SKT-2US 1 1 PG. OF: 1

**ROAD SYSTEMS INC.
 BIG SPRING, TX
 (915)-263-2435 or (815)-464-5917**