



# Addendum

Re	Addendum to the Water Resources Report		
Project	Environmental Impact Statement: South Mountain Transportation Corridor in Maricopa County, Arizona		
Project numbers	Federal-aid Project Number: NH-202-D(ADY) ADOT Project Number: 202L MA 054 H5764 01L	Date	June 2014

Since publication of the Draft Environmental Impact Statement (DEIS), all technical reports supporting the DEIS have been updated to reflect current conditions. Changes to the Water Resources Report are underlined and presented below.

Well-specific groundwater depth and water quality information may be available; however, these topics were not updated because fluctuations, while expected, would not be significant and would not change the conclusions or mitigation measures presented in the technical report.

## 1. Project Description and Purpose and Need

Page 1-3, paragraph 4:

- From 1980 to 2010, the Maricopa County population more than doubled, from 1.5 million to 3.8 million.
- Phoenix is now the sixth-largest city in the country, and the region ranks as the 13th-largest metropolitan area in the country.

Page 1-3, paragraph 5:

- MAG projections (conducted in collaboration with the Arizona Department of Economic Security) indicate Maricopa County's population will increase from 3.8 million in 2010 to 5.8 million in 2035 (MAG 2013). It is projected that in the next 25 years, daily vehicle miles traveled will increase from 91 million to 149 million.

Page 1-4, paragraph 1:

- Even with anticipated improvements in light rail service, bus service, trip reduction programs, and existing roads and freeways, vehicle traffic volumes are expected to exceed the capacity of Phoenix metropolitan area streets and highways by as much as 18 percent in 2035.
- A freeway within the SMTC would accommodate approximately 11 percentage points of the 18 percent of the unmet travel demand and would be part of an overall traffic solution.

## 2. Affected Environment

Page 2-7, Figure 4:

- Figure 4: Wells (ADWR 2013) (see page 3 of this addendum)

## 3. Environmental Consequences

Page 3-2, Table 2:

**Table 2. Potentially Affected Wells, by Alternative and Option**

Alternative/Option	Number of Wells
W59	<u>94</u>
W71	<u>30</u>
W101WPR	<u>48</u>
W101WFR	<u>48</u>
W101CPR	<u>32</u>
W101CFR	<u>32</u>
W101EPR	<u>30</u>
W101EFR	<u>30</u>
E1	<u>27</u>

## 4. Mitigation

Page 4-1, paragraph 1:

- The following describes potential mitigation measures for ADOT to consider as future commitments to be implemented as part of the project to avoid, reduce, or otherwise mitigate environmental impacts associated with the project. The discussion of these measures in this report does not obligate ADOT to these specific measures. ADOT, along with FHWA, may choose to modify, delete, or add measures to mitigate impacts. Final obligation of mitigation measures would be made in the record of decision.

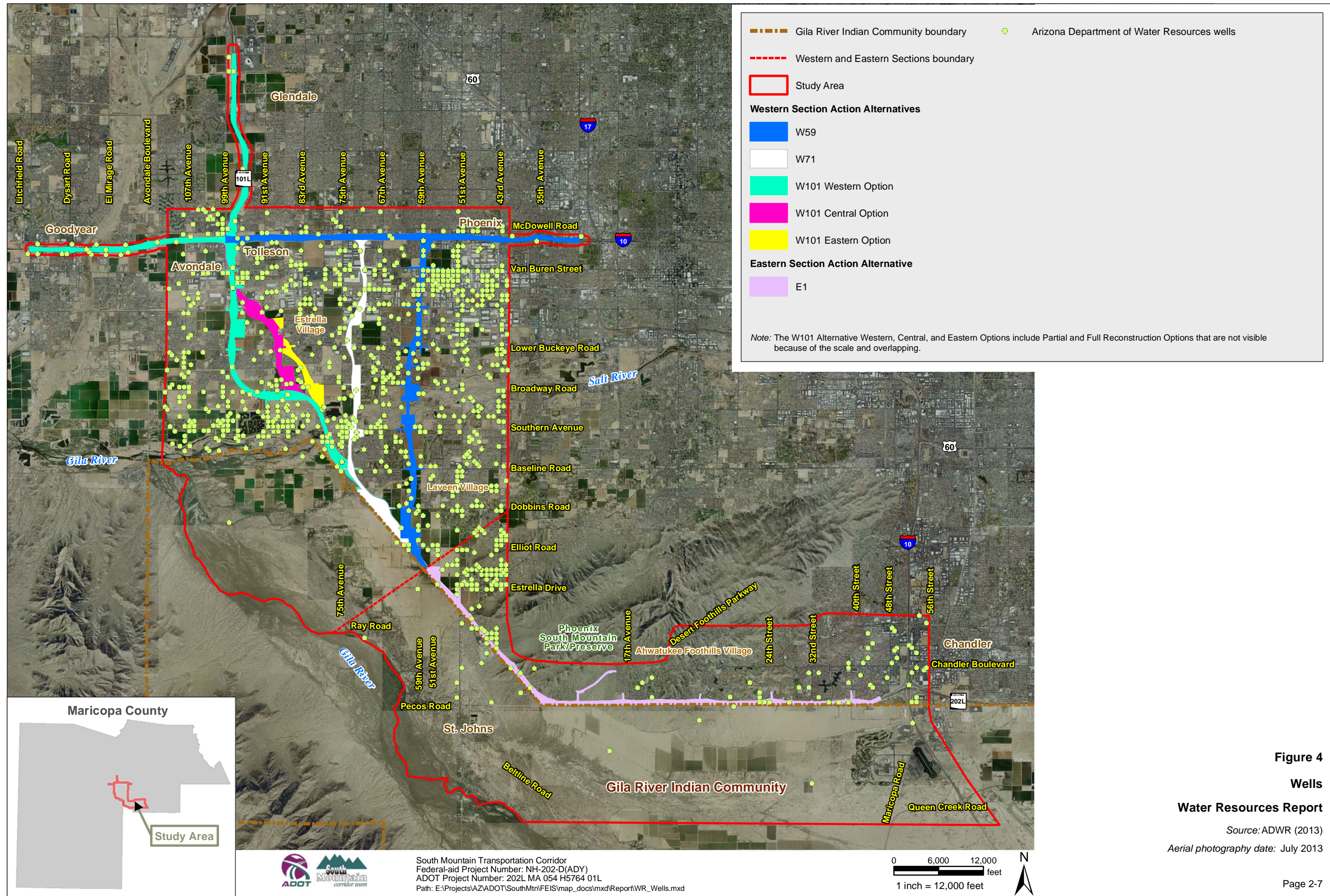
## 5. Bibliography/References

Arizona Department of Water Quality. 2013. *Well Registry (Wells 55)*. <[gisweb.azwater.gov/waterresourcedata/](http://gisweb.azwater.gov/waterresourcedata/)>

Maricopa Area Governments (MAG). 2013. *Socioeconomic Projections: Population, Housing, and Employment by Municipal Planning Area and Regional Analysis Zone*. Phoenix.

## 6. Appendix

Appendix A: Registered Wells in Proposed Right of Way (Updated)



**Figure 4**  
**Wells**  
**Water Resources Report**  
Source: ADWR (2013)  
Aerial photography date: July 2013

# **Appendix A**

---

## **Registered Wells in Proposed Right-of-Way (Updated)**

WELLS - W59

REGISTRYID	PROGRAM	UTM_X_METER	UTM_Y_METER	WELLTYPE	WELL_DEPTH	WATER_LEVEL	CASING_TYPE	CASING_DIA	CASING_DEPTH	PUMP_TYPE	PUMP_POWER	PUMPRATE	OWNER_NAME
626360	55	389527.2	3691238	EXEMPT	300		35 STEEL - PERFORATED OR SLOTTED CASING	6		300 NO PUMP CODE LISTED	NO POWER CODE LISTED	6	ARIZONA DEPARTMENT OF TRANSPORTATION
618450	55	388842.1	3691344	EXEMPT	0		0 STEEL - PERFORATED OR SLOTTED CASING	6		0 NO PUMP CODE LISTED	NO POWER CODE LISTED	0	ARIZONA DEPARTMENT OF TRANSPORTATION
626357	55	389147.8	3692043	EXEMPT	300		35 STEEL - PERFORATED OR SLOTTED CASING	6		300 NO PUMP CODE LISTED	NO POWER CODE LISTED	6	ARIZONA DEPARTMENT OF TRANSPORTATION
809603	55	389147.8	3692043	EXEMPT	0		0 NO CASING CODE LISTED	6		0	NO POWER CODE LISTED	0	ARIZONA DEPARTMENT OF TRANSPORTATION
611333	55	389248.8	3692546	NON-EXEMPT	300		75 NO CASING CODE LISTED	6		0 NO PUMP CODE LISTED	NO POWER CODE LISTED	0	KLAUS FOREST
601559	55	389259.6	3693356	NON-EXEMPT	155		40 STEEL - PERFORATED OR SLOTTED CASING	20		155 NO PUMP CODE LISTED	NO POWER CODE LISTED	1300	JOJO I LLC
601561	55	389259.6	3693356	EXEMPT	811		50 STEEL - PERFORATED OR SLOTTED CASING	8		525 NO PUMP CODE LISTED	NO POWER CODE LISTED	25	HONOLU ACCOMAZZO
601562	55	389259.6	3693356	EXEMPT	400		50 STEEL - PERFORATED OR SLOTTED CASING	8		400 NO PUMP CODE LISTED	NO POWER CODE LISTED	10	ACCOMAZZO, MARK,
903891	55	389171.1	3697674	EXEMPT	125		30 STEEL - PERFORATED OR SLOTTED CASING	6		125	NO POWER CODE LISTED	0	CITA DESIGN INC
624228	55	389381.9	3698465	NON-EXEMPT	360		5 STEEL - PERFORATED OR SLOTTED CASING	10		300 NO PUMP CODE LISTED	NO POWER CODE LISTED	0	STATE OF ARIZONA/DEPT OF TRANSPORTATION
608386	55	389590	3698859	NON-EXEMPT	800		122 STEEL - PERFORATED OR SLOTTED CASING	20		800 NO PUMP CODE LISTED	NO POWER CODE LISTED	4426	SALT RIVER PROJECT,
701901	55	389590	3698859	EXEMPT	0		0	0		0	NO POWER CODE LISTED	0	SALT RIVER PROJECT,
619769	55	389594.4	3699262	EXEMPT	0		0 NO CASING CODE LISTED	0		0 NO PUMP CODE LISTED	NO POWER CODE LISTED	0	CORP PRES BISHOP LDS CHURCH
620373	55	389596.6	3699463	NON-EXEMPT	240		0 STEEL - PERFORATED OR SLOTTED CASING	6		0 NO PUMP CODE LISTED	NO POWER CODE LISTED	50	BRECKENRIDGE, R V
619745	55	389605.3	3700267	NON-EXEMPT	0		0 STEEL - PERFORATED OR SLOTTED CASING	20		0 NO PUMP CODE LISTED	NO POWER CODE LISTED	2800	PROPERTY RESERVE ARIZONA, LLC
541683	55	389609.2	3700468	MONITOR	81		65 PLASTIC OR PVC	4		51 NO PUMP CODE LISTED	NO POWER CODE LISTED	0	CALZONA TANKWAYS INC
542104	55	389609.2	3700468	MONITOR	82		60 PLASTIC OR PVC	4		50 NO PUMP CODE LISTED	NO POWER CODE LISTED	0	CALZONA TANKWAYS INC
542105	55	389609.2	3700468	MONITOR	82		60 PLASTIC OR PVC	4		50 NO PUMP CODE LISTED	NO POWER CODE LISTED	0	CALZONA TANKWAYS INC
571780	55	389609.2	3700468	MONITOR	106		84 PLASTIC OR PVC	4		105	NO POWER CODE LISTED	0	CALZONA TANKWAYS, INC.
539368	55	389613.6	3700869	MONITOR OR PIEZOMETER	435		70 STEEL - PERFORATED OR SLOTTED CASING	0		435 NO PUMP CODE LISTED	NO POWER CODE LISTED	0	DOLPHIN, INC,
543946	55	389613.6	3700869	MONITOR OR PIEZOMETER	460		78 STEEL - PERFORATED OR SLOTTED CASING	4		425 NO PUMP CODE LISTED	NO POWER CODE LISTED	0	DOLPHIN INC,
568941	55	389613.6	3700869	MONITOR	130		93 PLASTIC OR PVC	2		0	NO POWER CODE LISTED	0	DOLPHIN INC,
568942	55	389613.6	3700869	MONITOR	130		93 PLASTIC OR PVC	2		0	NO POWER CODE LISTED	0	DOLPHIN INC,
568943	55	389613.6	3700869	MONITOR	130		93 PLASTIC OR PVC	2		0	NO POWER CODE LISTED	0	DOLPHIN INC,
568946	55	389613.6	3700869	MONITOR	95		93 PLASTIC OR PVC	1		0	NO POWER CODE LISTED	0	DOLPHIN INC,
568947	55	389613.6	3700869	MONITOR	95		93 PLASTIC OR PVC	1		0	NO POWER CODE LISTED	0	DOLPHIN INC,
568948	55	389613.6	3700869	MONITOR	95		93 PLASTIC OR PVC	1		0	NO POWER CODE LISTED	0	DOLPHIN INC,
568937	55	389613.6	3700869	MONITOR	95		93 PLASTIC OR PVC	4		0	NO POWER CODE LISTED	0	DOLPHIN INC,
568938	55	389613.6	3700869	MONITOR	95		93 PLASTIC OR PVC	4		0	NO POWER CODE LISTED	0	DOLPHIN INC,
568939	55	389613.6	3700869	MONITOR	95		93 PLASTIC OR PVC	4		0	NO POWER CODE LISTED	0	DOLPHIN INC,
573135	55	389613.6	3700869	MONITOR	0		0	0		0	NO POWER CODE LISTED	0	DOLPHIN INC,
573136	55	389613.6	3700869	MONITOR	0		0	0		0	NO POWER CODE LISTED	0	DOLPHIN INC,
573137	55	389613.6	3700869	MONITOR	0		0	0		0	NO POWER CODE LISTED	0	DOLPHIN INC,
573138	55	389613.6	3700869	MONITOR	0		0	0		0	NO POWER CODE LISTED	0	DOLPHIN INC,
573139	55	389613.6	3700869	MONITOR	0		0	0		0	NO POWER CODE LISTED	0	DOLPHIN INC,
580425	55	389613.6	3700869	MONITOR	135		94 PLASTIC OR PVC	4		135 NO PUMP CODE LISTED	WINDMILL	1	DOLPHIN INC
580432	55	389613.6	3700869	MONITOR	0		0	0		0	NO POWER CODE LISTED	0	DOLPHIN INC
580434	55	389613.6	3700869	GEOTECHNICAL	0		0	0		0	NO POWER CODE LISTED	0	DOLPHIN INC
543945	55	389615.8	3701070	MONITOR OR PIEZOMETER	450		79 STEEL - PERFORATED OR SLOTTED CASING	4		425 NO PUMP CODE LISTED	NO POWER CODE LISTED	0	DOLPHIN INC,
568945	55	389615.8	3701070	MONITOR	95		93 PLASTIC OR PVC	1		0	NO POWER CODE LISTED	0	DOLPHIN INC
626588	55	389615.8	3701070	NON-EXEMPT	565		145 STEEL - PERFORATED OR SLOTTED CASING	14		562 NO PUMP CODE LISTED	NO POWER CODE LISTED	0	CITY OF PHOENIX
702210	55	389615.8	3701070	EXEMPT	263		0	0		0	NO POWER CODE LISTED	0	CITY OF PHOENIX
540982	55	389822	3701667	MONITOR OR PIEZOMETER	0		0 NO CASING CODE LISTED	0		0 NO PUMP CODE LISTED	NO POWER CODE LISTED	0	SALT RIVER PROJECT,
607204	55	389824	3701867	NON-EXEMPT	414		97 STEEL - PERFORATED OR SLOTTED CASING	24		414 NO PUMP CODE LISTED	NO POWER CODE LISTED	2195	ROOSEVELT IRR DIST,
701927	55	389833.5	3702470	EXEMPT	0		0	0		0	NO POWER CODE LISTED	0	JF MARLAR
481544	55	389836.3	3702671	EXEMPT	0		0	0		0	NO POWER CODE LISTED	0	H WALKER HARRISON TRUST
481545	55	389836.3	3702671	EXEMPT	0		0	0		0	NO POWER CODE LISTED	0	H WALKER HARRISON TRUST
537922	55	389842.1	3703073	MONITOR OR PIEZOMETER	0		0 NO CASING CODE LISTED	0		0 NO PUMP CODE LISTED	NO POWER CODE LISTED	0	CIRCLE K CORP,
537923	55	389842.1	3703073	MONITOR OR PIEZOMETER	120		89 PLASTIC OR PVC	4		75 NO PUMP CODE LISTED	NO POWER CODE LISTED	0	CONOCO PHILLIPS COMPANY
537924	55	389842.1	3703073	MONITOR OR PIEZOMETER	120		89 PLASTIC OR PVC	4		75 NO PUMP CODE LISTED	NO POWER CODE LISTED	0	CONOCO PHILLIPS COMPANY
537925	55	389842.1	3703073	MONITOR OR PIEZOMETER	120		89 PLASTIC OR PVC	4		79 NO PUMP CODE LISTED	NO POWER CODE LISTED	0	CONOCO PHILLIPS COMPANY
537926	55	389842.1	3703073	MONITOR	130		90 PLASTIC OR PVC	4		75 NO PUMP CODE LISTED	NO POWER CODE LISTED	0	CIRCLE K COMPANY
537927	55	389842.1	3703073	MONITOR OR PIEZOMETER	120		90 PLASTIC OR PVC	4		75 NO PUMP CODE LISTED	NO POWER CODE LISTED	0	CONOCO PHILLIPS COMPANY
537928	55	389842.1	3703073	MONITOR OR PIEZOMETER	0		0 NO CASING CODE LISTED	0		0 NO PUMP CODE LISTED	NO POWER CODE LISTED	0	CIRCLE K CORP,
537929	55	389842.1	3703073	MONITOR OR PIEZOMETER	0		0 NO CASING CODE LISTED	0		0 NO PUMP CODE LISTED	NO POWER CODE LISTED	0	CIRCLE K CORP,
537930	55	389842.1	3703073	MONITOR OR PIEZOMETER	0		0 NO CASING CODE LISTED	0		0 NO PUMP CODE LISTED	NO POWER CODE LISTED	0	CIRCLE K CORP,
537931	55	389842.1	3703073	MONITOR OR PIEZOMETER	0		0 NO CASING CODE LISTED	0		0 NO PUMP CODE LISTED	NO POWER CODE LISTED	0	CIRCLE K CORP,
537932	55	389842.1	3703073	MONITOR OR PIEZOMETER	0		0 NO CASING CODE LISTED	0		0 NO PUMP CODE LISTED	NO POWER CODE LISTED	0	CIRCLE K CORP,
545455	55	389842.1	3703073	MONITOR OR PIEZOMETER	110		91 PLASTIC OR PVC	4		110 NO PUMP CODE LISTED	NO POWER CODE LISTED	0	CONOCO PHILLIPS COMPANY
545456	55	389842.1	3703073	MONITOR OR PIEZOMETER	112		88 PLASTIC OR PVC	4		109 NO PUMP CODE LISTED	NO POWER CODE LISTED	0	CONOCO PHILLIPS COMPANY
545457	55	389842.1	3703073	MONITOR OR PIEZOMETER	111		86 PLASTIC OR PVC	4		110 NO PUMP CODE LISTED	NO POWER CODE LISTED	0	CONOCO PHILLIPS COMPANY
545458	55	389842.1	3703073	MONITOR OR PIEZOMETER	112		91 PLASTIC OR PVC	4		110 NO PUMP CODE LISTED	NO POWER CODE LISTED	0	CONOCO PHILLIPS COMPANY
545459	55	389842.1	3703073	MONITOR OR PIEZOMETER	112		90 PLASTIC OR PVC	4		110 NO PUMP CODE LISTED	NO POWER CODE LISTED	0	CONOCO PHILLIPS COMPANY
545460	55	389842.1	3703073	MONITOR OR PIEZOMETER	0		0 NO CASING CODE LISTED	0		0 NO PUMP CODE LISTED	NO POWER CODE LISTED	0	CIRCLE K CORP,
545461	55	389842.1	3703073	MONITOR OR PIEZOMETER	0		0 NO CASING CODE LISTED	0		0 NO PUMP CODE LISTED	NO POWER CODE LISTED	0	CIRCLE K CORP,
551476	55	389842.1	3703073	MONITOR	110		97 PLASTIC OR PVC	1		107 NO PUMP CODE LISTED	NO POWER CODE LISTED	0	CONOCO PHILLIPS COMPANY
551477	55	389842.1	3703073	MONITOR OR PIEZOMETER	0		0 NO CASING CODE LISTED	0		0 NO PUMP CODE LISTED	NO POWER CODE LISTED	0	CIRCLE K STORE 1992,
551478	55	389842.1	3703073	MONITOR OR PIEZOMETER	0		0 NO CASING CODE LISTED	0		0 NO PUMP CODE LISTED	NO POWER CODE LISTED	0	CIRCLE K STORE 1992,
561932	55	389842.1	3703073	MONITOR	120		90 PLASTIC OR PVC	4		80 NO PUMP CODE LISTED	NO POWER CODE LISTED	0	CONOCO PHILLIPS COMPANY
561933	55	389842.1	3703073	MONITOR	120		90 PLASTIC OR PVC	4		80 NO PUMP CODE LISTED	NO POWER CODE LISTED	0	CONOCO PHILLIPS COMPANY
561934	55	389842.1	3703073	MONITOR	120		90 PLASTIC OR PVC	4		80 NO PUMP CODE LISTED	NO POWER CODE LISTED	0	CONOCO PHILLIPS COMPANY
561935	55	389842.1	3703073	MONITOR OR PIEZOMETER	120		90 PLASTIC OR PVC	4		80 NO PUMP CODE LISTED	NO POWER CODE LISTED	0	ARIZONA DEPARTMENT OF ENVIRONMENTAL QUALITY

WELLS - W59

REGISTRYID	PROGRAM	UTM_X_METER	UTM_Y_METER	WELLTYPE	WELL_DEPTH	WATER_LEVEL	CASING_TYPE	CASING_DIA	CASING_DEPTH	PUMP_TYPE	PUMP_POWER	PUMPRATE	OWNER_NAME
565562	55	389842.1	3703073	MONITOR	0	0		0	0			0	CONOCO PHILLIPS COMPANY
565563	55	389842.1	3703073	MONITOR	0	0		0	0			0	CONOCO PHILLIPS COMPANY
565564	55	389842.1	3703073	MONITOR	0	0		0	0			0	CONOCO PHILLIPS COMPANY
565565	55	389842.1	3703073	MONITOR	0	0		0	0			0	CONOCO PHILLIPS COMPANY
565566	55	389842.1	3703073	MONITOR	0	0		0	0			0	CONOCO PHILLIPS COMPANY
565567	55	389842.1	3703073	MONITOR	0	0		0	0			0	CONOCO PHILLIPS COMPANY
565568	55	389842.1	3703073	MONITOR	0	0		0	0			0	CONOCO PHILLIPS COMPANY
565569	55	389842.1	3703073	MONITOR	0	0		0	0			0	CONOCO PHILLIPS COMPANY
565570	55	389842.1	3703073	MONITOR	0	0		0	0			0	CONOCO PHILLIPS COMPANY
565571	55	389842.1	3703073	MONITOR	0	0		0	0			0	CONOCO PHILLIPS COMPANY
565572	55	389842.1	3703073	MONITOR	0	0		0	0			0	CONOCO PHILLIPS COMPANY
565573	55	389842.1	3703073	MONITOR	0	0		0	0			0	CONOCO PHILLIPS COMPANY
565574	55	389842.1	3703073	MONITOR	0	0		0	0			0	CONOCO PHILLIPS COMPANY
565575	55	389842.1	3703073	MONITOR	0	0		0	0			0	CONOCO PHILLIPS COMPANY
565576	55	389842.1	3703073	MONITOR	0	0		0	0			0	CONOCO PHILLIPS COMPANY
565577	55	389842.1	3703073	MONITOR	0	0		0	0			0	CONOCO PHILLIPS COMPANY
565578	55	389842.1	3703073	MONITOR	0	0		0	0			0	CONOCO PHILLIPS COMPANY
565579	55	389842.1	3703073	MONITOR	0	0		0	0			0	CONOCO PHILLIPS COMPANY
565580	55	389842.1	3703073	MONITOR	0	0		0	0			0	CONOCO PHILLIPS COMPANY
565581	55	389842.1	3703073	MONITOR	0	0		0	0			0	CONOCO PHILLIPS COMPANY
572870	55	389842.1	3703073	MONITOR	130	108	PLASTIC OR PVC	6	90			0	CONOCO PHILLIPS COMPANY
702264	55	389842.1	3703073	MONITOR	130	0		0	0			0	CIRCLE K COMPANY

WELLS - W71

REGISTRYID	PROGRAM	UTM_X_METER	UTM_Y_METER	WELLTYPE	WELL_DEPTH	WATER_LEVEL	CASING_TYPE	CASING_DIA	CASING_DEPTH	PUMP_TYPE	PUMP_POWER	PUMPRATE	OWNER_NAME
542210	55	389123.9	3690444	MONITOR OR PIEZOMETER	35	26	PLASTIC OR PVC	2	35	NO PUMP CODE LISTED	NO POWER CODE LISTED	0	ARIZONA DEPT OF TRANSPORTATION
542211	55	389123.9	3690444	MONITOR OR PIEZOMETER	35	28	PLASTIC OR PVC	2	35	NO PUMP CODE LISTED	NO POWER CODE LISTED	0	ARIZONA DEPT OF TRANSPORTATION
542212	55	389123.9	3690444	MONITOR OR PIEZOMETER	0	0	NO CASING CODE LISTED	0	0	NO PUMP CODE LISTED	NO POWER CODE LISTED	0	ARIZONA DEPT OF TRANSPORTATION
809602	55	389123.9	3690444	NON-EXEMPT	500	100	STEEL - PERFORATED OR SLOTTED CASING	20	500	0	NO POWER CODE LISTED	0	ARIZONA DEPARTMENT OF TRANSPORTATION
542213	55	389132	3690644	MONITOR OR PIEZOMETER	40	30	PLASTIC OR PVC	2	40	NO PUMP CODE LISTED	NO POWER CODE LISTED	0	ARIZONA DEPT OF TRANSPORTATION
542214	55	389132	3690644	MONITOR OR PIEZOMETER	35	28	PLASTIC OR PVC	5	35	NO PUMP CODE LISTED	NO POWER CODE LISTED	0	ARIZONA DEPT OF TRANSPORTATION
542215	55	389132	3690644	MONITOR OR PIEZOMETER	0	0	NO CASING CODE LISTED	0	0	NO PUMP CODE LISTED	NO POWER CODE LISTED	0	ARIZONA DEPT OF TRANSPORTATION
809604	55	388935.5	3690647	NON-EXEMPT	520	41	STEEL - PERFORATED OR SLOTTED CASING	20	420	0	NO POWER CODE LISTED	0	ARIZONA DEPARTMENT OF TRANSPORTATION
619405	55	387042.4	3695076	EXEMPT	310	28	STEEL - PERFORATED OR SLOTTED CASING	8	300	NO PUMP CODE LISTED	NO POWER CODE LISTED	50	SOUTHERN 7211, LLC
587579	55	387042.2	3695277	EXEMPT	0	0	0	0	0	0	0	0	KITTY NORTON
591238	55	387042.2	3695277	EXEMPT	140	60	STEEL - PERFORATED OR SLOTTED CASING	8	140	0	NO POWER CODE LISTED	0	KITTY NORTON
636009	55	387042.2	3695277	EXEMPT	330	30	STEEL - PERFORATED OR SLOTTED CASING	8	325	NO PUMP CODE LISTED	NO POWER CODE LISTED	70	SOUTHERN 7211, LLC
636010	55	387042.2	3695277	EXEMPT	160	24	STEEL - PERFORATED OR SLOTTED CASING	8	120	NO PUMP CODE LISTED	NO POWER CODE LISTED	70	SOUTHERN 7211, LLC
636011	55	387042.2	3695277	EXEMPT	300	24	STEEL - PERFORATED OR SLOTTED CASING	8	290	NO PUMP CODE LISTED	NO POWER CODE LISTED	70	SOUTHERN 7211, LLC
605873	55	386834.5	3695495	NON-EXEMPT	0	0	NO CASING CODE LISTED	0	0	NO PUMP CODE LISTED	NO POWER CODE LISTED	0	SCHLOSSER, RONALD,
596129	55	387020	3695723	MINERAL EXPLORATION	80	31	NO CASING CODE LISTED	10	0	0	0	0	CEMEX
633516	55	386902.6	3695845	EXEMPT	95	21	STEEL - PERFORATED OR SLOTTED CASING	4	95	NO PUMP CODE LISTED	NO POWER CODE LISTED	15	RUTHLEDGE, J D
636303	55	387048.1	3696993	EXEMPT	182	85	STEEL - PERFORATED OR SLOTTED CASING	6	182	NO PUMP CODE LISTED	NO POWER CODE LISTED	30	CARTER, J R
635541	55	386681.5	3699034	EXEMPT	350	60	STEEL - PERFORATED OR SLOTTED CASING	8	350	NO PUMP CODE LISTED	NO POWER CODE LISTED	20	DUNCAN, C L
803675	55	386681.5	3699034	EXEMPT	0	0	STEEL - PERFORATED OR SLOTTED CASING	0	0	NO PUMP CODE LISTED	NO POWER CODE LISTED	35	LANDRUM, J
400041	55	387208.2	3700315	EXEMPT	80	0	STEEL - PERFORATED OR SLOTTED CASING	6	55	0	NO POWER CODE LISTED	0	TREND HOMES OF ARIZONA
607226	55	387419.8	3701110	NON-EXEMPT	600	86	STEEL - PERFORATED OR SLOTTED CASING	20	532	NO PUMP CODE LISTED	NO POWER CODE LISTED	2419	ROOSEVELT IRR DIST,
208867	55	387435.8	3701907	MONITOR	0	0	0	0	0	0	0	0	TARGET CORP
208868	55	387435.8	3701907	MONITOR	0	0	0	0	0	0	0	0	TARGET CORP
208869	55	387435.8	3701907	EXEMPT	0	0	0	0	0	0	0	0	TARGET CORP
208870	55	387435.8	3701907	MONITOR	0	0	0	0	0	0	0	0	TARGET CORP
208871	55	387435.8	3701907	MONITOR	0	0	0	0	0	0	0	0	TARGET CORP
209856	55	387251.9	3702696	GEOTECHNICAL	150	150	0	0	0	0	0	0	SCHWINS FOOD CO
589635	55	387251.9	3702696	MONITOR	140	115	PLASTIC OR PVC	4	90	0	NO POWER CODE LISTED	0	ARIZONA DEPARTMENT OF ENVIRONMENTAL QUALITY
589644	55	387251.9	3702696	MONITOR	380	121	PLASTIC OR PVC	5	323	0	NO POWER CODE LISTED	0	ARIZONA DEPARTMENT OF ENVIRONMENTAL QUALITY

WELLS - W101WPR

REGISTRYID	PROGRAM	UTM_X_METER	UTM_Y_METER	WELLTYPE	WELL_DEPTH	WATER_LEVEL	CASING_TYPE	CASING_DIA	CASING_DEPTH	PUMP_TYPE	PUMP_POWER	PUMPRATE	OWNER_NAME
542210	55	389123.9	3690444	MONITOR OR PIEZOI	35	26	PLASTIC OR PVC	2	35	NO PUMP CODE LISTED	NO POWER CODE LISTED	0	ARIZONA DEPT OF TRANSPORTATION
542211	55	389123.9	3690444	MONITOR OR PIEZOI	35	28	PLASTIC OR PVC	2	35	NO PUMP CODE LISTED	NO POWER CODE LISTED	0	ARIZONA DEPT OF TRANSPORTATION
542212	55	389123.9	3690444	MONITOR OR PIEZOI	0	0	NO CASING CODE LISTED	0	0	NO PUMP CODE LISTED	NO POWER CODE LISTED	0	ARIZONA DEPT OF TRANSPORTATION
809602	55	389123.9	3690444	NON-EXEMPT	500	100	STEEL - PERFORATED OR SLOTTED CASING	20	500			0	ARIZONA DEPARTMENT OF TRANSPORTATION
542213	55	389132	3690644	MONITOR OR PIEZOI	40	30	PLASTIC OR PVC	2	40	NO PUMP CODE LISTED	NO POWER CODE LISTED	0	ARIZONA DEPT OF TRANSPORTATION
542214	55	389132	3690644	MONITOR OR PIEZOI	35	28	PLASTIC OR PVC	5	35	NO PUMP CODE LISTED	NO POWER CODE LISTED	0	ARIZONA DEPT OF TRANSPORTATION
542215	55	389132	3690644	MONITOR OR PIEZOI	0	0	NO CASING CODE LISTED	0	0	NO PUMP CODE LISTED	NO POWER CODE LISTED	0	ARIZONA DEPT OF TRANSPORTATION
809604	55	388935.5	3690647	NON-EXEMPT	520	41	STEEL - PERFORATED OR SLOTTED CASING	20	420			0	ARIZONA DEPARTMENT OF TRANSPORTATION
580078	55	386436.2	3694077	WITHDRAWAL PERM	83	25	STEEL - PERFORATED OR SLOTTED CASING	12	80			0	CITY OF PHOENIX WATER SERVICES
584728	55	386436.2	3694077	NON-EXEMPT	74	28	PLASTIC OR PVC	12	74			0	PCL CIVIL CONSTRUCTORS INC
584729	55	386436.2	3694077	NON-EXEMPT	74	28	PLASTIC OR PVC	12	74			0	PCL CIVIL CONSTRUCTORS INC
584730	55	386436.2	3694077	NON-EXEMPT	75	27	PLASTIC OR PVC	12	75			0	PCL CIVIL CONSTRUCTORS INC
584731	55	386436.2	3694077	NON-EXEMPT	80	27	PLASTIC OR PVC	12	80			0	PCL CIVIL CONSTRUCTORS INC
87542	55	386039.7	3694689	EXEMPT	390	60	STEEL - PERFORATED OR SLOTTED CASING	8	390	CENTRIFUGAL	ELECTRIC MOTOR < 1 HP	20	RUTH WOOTEN KENNELS,
221862	55	386041.7	3694890	EXEMPT	200	37	STEEL - PERFORATED OR SLOTTED CASING	6	200			0	REBECA CERNA
584334	55	386041.7	3694890	EXEMPT	160	40	STEEL - PERFORATED OR SLOTTED CASING	6	160			0	LYLE ASKREN
583205	55	385841.2	3694894	EXEMPT	160	50	STEEL - PERFORATED OR SLOTTED CASING	6	160			0	JOSE SERRATO
514691	55	385843.3	3695096	DOMESTIC STOCK E	360	30	STEEL - PERFORATED OR SLOTTED CASING	6	270	SUBMERSIBLE	ELECTRIC MOTOR 1 - 5 HP	30	BURKS, EUGENE,S
200418	55	384238.7	3696839	WITHDRAWAL PERM	130	0	PLASTIC OR PVC	14	130			0	PCL CONSTRUCTION INC
574575	55	382992.3	3696956	EXEMPT	425	61	STEEL - PERFORATED OR SLOTTED CASING	6	413			0	GERBEN BOSCHMA DAIRY
617512	55	381986.9	3697979	NON-EXEMPT	310	0	OTHER - BLACK STEEL - IRON - SEAMLESS	8	298	NO PUMP CODE LISTED	NO POWER CODE LISTED	74	COUNTRY PLACE LLC
201045	55	382033.5	3701221	MONITOR	80	58	PLASTIC OR PVC	10	80			0	UNION OIL CO OF CALIFORNIA
545632	55	382033.5	3701221	MONITOR OR PIEZOI	80	47	PLASTIC OR PVC	4	80	NO PUMP CODE LISTED	NO POWER CODE LISTED	0	PUREGRO CO,
545633	55	382033.5	3701221	MONITOR OR PIEZOI	80	47	PLASTIC OR PVC	4	80	NO PUMP CODE LISTED	NO POWER CODE LISTED	0	PUREGRO CO,
545634	55	382033.5	3701221	MONITOR OR PIEZOI	80	47	PLASTIC OR PVC	4	80	NO PUMP CODE LISTED	NO POWER CODE LISTED	0	PUREGRO CO,
545635	55	382033.5	3701221	MONITOR OR PIEZOI	80	47	PLASTIC OR PVC	4	80	NO PUMP CODE LISTED	NO POWER CODE LISTED	0	PUREGRO CO,
545636	55	382033.5	3701221	MONITOR OR PIEZOI	80	47	PLASTIC OR PVC	4	80	NO PUMP CODE LISTED	NO POWER CODE LISTED	0	PUREGRO CO,
545637	55	382033.5	3701221	MONITOR OR PIEZOI	80	47	PLASTIC OR PVC	4	80	NO PUMP CODE LISTED	NO POWER CODE LISTED	0	PUREGRO CO,
545237	55	382033.5	3701221	MONITOR OR PIEZOI	0	0	NO CASING CODE LISTED	0	0	NO PUMP CODE LISTED	NO POWER CODE LISTED	0	PUREGRO CO,
545238	55	382033.5	3701221	MONITOR OR PIEZOI	0	0	NO CASING CODE LISTED	0	0	NO PUMP CODE LISTED	NO POWER CODE LISTED	0	PUREGRO CO,
545239	55	382033.5	3701221	MONITOR OR PIEZOI	0	0	NO CASING CODE LISTED	0	0	NO PUMP CODE LISTED	NO POWER CODE LISTED	0	PUREGRO CO,
588429	55	382033.5	3701221	MONITOR	75	55	PLASTIC OR PVC	2	75			0	UNOCAL CORP RRM 775040
588430	55	382033.5	3701221	MONITOR	75	55	PLASTIC OR PVC	2	75			0	UNOCAL CORP RRM 775040
588431	55	382033.5	3701221	MONITOR	75	55	PLASTIC OR PVC	2	75			0	UNOCAL CORP RRM 775040
588432	55	382033.5	3701221	MONITOR	75	55	PLASTIC OR PVC	2	75			0	UNOCAL CORP RRM 775040
596977	55	382033.5	3701221	MONITOR	110	59	PLASTIC OR PVC	5	110			0	UNOCAL CORPORATION
596978	55	382033.5	3701221	MONITOR	110	59	PLASTIC OR PVC	5	110			0	UNOCAL CORPORATION
596979	55	382033.5	3701221	MONITOR	110	59	PLASTIC OR PVC	5	110			0	UNOCAL CORPORATION
548486	55	382436.4	3701421	MONITOR OR PIEZOI	75	55	PLASTIC OR PVC	4	75	NO PUMP CODE LISTED	NO POWER CODE LISTED	0	TOLLESON UNION HIGH SCHOOL DISTRICT
548487	55	382436.4	3701421	MONITOR OR PIEZOI	75	55	PLASTIC OR PVC	4	75	NO PUMP CODE LISTED	NO POWER CODE LISTED	0	TOLLESON UNION HIGH SCHOOL DISTRICT
548488	55	382436.4	3701421	MONITOR OR PIEZOI	75	57	PLASTIC OR PVC	4	74	NO PUMP CODE LISTED	NO POWER CODE LISTED	0	TOLLESON UNION HIGH,
550131	55	382436.4	3701421	MONITOR OR PIEZOI	75	57	PLASTIC OR PVC	1	48	NO PUMP CODE LISTED	NO POWER CODE LISTED	0	TOLLESON UNION HIGH SCHOOL DISTRICT
550132	55	382436.4	3701421	MONITOR OR PIEZOI	75	57	PLASTIC OR PVC	1	75	NO PUMP CODE LISTED	NO POWER CODE LISTED	0	TOLLESON UNION HIGH SCHOOL DISTRICT
550133	55	382436.4	3701421	MONITOR OR PIEZOI	75	57	PLASTIC OR PVC	1	75	NO PUMP CODE LISTED	NO POWER CODE LISTED	0	TOLLESON UNION HIGH SCHOOL DISTRICT
907934	55	382436.4	3701421	MONITOR	100	80	STEEL - PERFORATED OR SLOTTED CASING	0	100			0	TOLLESON UNION HIGH SCHOOL DISTRICT
503822	55	382236.1	3701422	EXPLORATION	620	92	STEEL - PERFORATED OR SLOTTED CASING	10	564	NO PUMP CODE LISTED	NO POWER CODE LISTED	0	TOLLESON, CITY OF,
482172	55	382040.1	3702029	EXEMPT	0	0		0	0			0	SURE-LOCK IV LLC
605370	55	382040.1	3702029	EXEMPT	0	0	STEEL - PERFORATED OR SLOTTED CASING	8	0	NO PUMP CODE LISTED	NO POWER CODE LISTED	20	COWDEN,E R



WELLS - W101WFR

REGISTRYID	PROGRAM	UTM_X_METER	UTM_Y_METER	WELLTYPE	WELL_DEPTH	WATER_LEVEL	CASING_TYPE	CASING_DIA	CASING_DEPTH	PUMP_TYPE	PUMP_POWER	PUMPRATE	OWNER_NAME
542210	55	389123.9	3690444	MONITOR OR PIEZOMETER	35	26	PLASTIC OR PVC	2	35	NO PUMP CODE LISTED	NO POWER CODE LISTED	0	ARIZONA DEPT OF TRANSPORTATION
542211	55	389123.9	3690444	MONITOR OR PIEZOMETER	35	28	PLASTIC OR PVC	2	35	NO PUMP CODE LISTED	NO POWER CODE LISTED	0	ARIZONA DEPT OF TRANSPORTATION
542212	55	389123.9	3690444	MONITOR OR PIEZOMETER	0	0	NO CASING CODE LISTED	0	0	NO PUMP CODE LISTED	NO POWER CODE LISTED	0	ARIZONA DEPT OF TRANSPORTATION
809602	55	389123.9	3690444	NON-EXEMPT	500	100	STEEL - PERFORATED OR SLOTTED CASING	20	500			0	ARIZONA DEPARTMENT OF TRANSPORTATION
542213	55	389132	3690644	MONITOR OR PIEZOMETER	40	30	PLASTIC OR PVC	2	40	NO PUMP CODE LISTED	NO POWER CODE LISTED	0	ARIZONA DEPT OF TRANSPORTATION
542214	55	389132	3690644	MONITOR OR PIEZOMETER	35	28	PLASTIC OR PVC	5	35	NO PUMP CODE LISTED	NO POWER CODE LISTED	0	ARIZONA DEPT OF TRANSPORTATION
542215	55	389132	3690644	MONITOR OR PIEZOMETER	0	0	NO CASING CODE LISTED	0	0	NO PUMP CODE LISTED	NO POWER CODE LISTED	0	ARIZONA DEPT OF TRANSPORTATION
809604	55	388935.5	3690647	NON-EXEMPT	520	41	STEEL - PERFORATED OR SLOTTED CASING	20	420			0	ARIZONA DEPARTMENT OF TRANSPORTATION
580078	55	386436.2	3694077	WITHDRAWAL PERMIT	83	25	STEEL - PERFORATED OR SLOTTED CASING	12	80			0	CITY OF PHOENIX WATER SERVICES
584728	55	386436.2	3694077	NON-EXEMPT	74	28	PLASTIC OR PVC	12	74			0	PCL CIVIL CONSTRUCTORS INC
584729	55	386436.2	3694077	NON-EXEMPT	74	28	PLASTIC OR PVC	12	74			0	PCL CIVIL CONSTRUCTORS INC
584730	55	386436.2	3694077	NON-EXEMPT	75	27	PLASTIC OR PVC	12	75			0	PCL CIVIL CONSTRUCTORS INC
584731	55	386436.2	3694077	NON-EXEMPT	80	27	PLASTIC OR PVC	12	80			0	PCL CIVIL CONSTRUCTORS INC
87542	55	386039.7	3694689	EXEMPT	390	60	STEEL - PERFORATED OR SLOTTED CASING	8	390	CENTRIFUGAL	ELECTRIC MOTOR < 1 HP	20	RUTH WOOTEN KENNELS,
221862	55	386041.7	3694890	EXEMPT	200	37	STEEL - PERFORATED OR SLOTTED CASING	6	200			0	REBECA CERNA
584334	55	386041.7	3694890	EXEMPT	160	40	STEEL - PERFORATED OR SLOTTED CASING	6	160			0	LYLE ASKREN
583205	55	385841.2	3694894	EXEMPT	160	50	STEEL - PERFORATED OR SLOTTED CASING	6	160			0	JOSE SERRATO
514691	55	385843.3	3695096	DOMESTIC STOCK EXEMPT	360	30	STEEL - PERFORATED OR SLOTTED CASING	6	270	SUBMERSIBLE	ELECTRIC MOTOR 1 - 5 HP	30	BURKS, EUGENE,S
200418	55	384238.7	3696839	WITHDRAWAL PERMIT	130	0	PLASTIC OR PVC	14	130			0	PCL CONSTRUCTION INC
574575	55	382992.3	3696956	EXEMPT	425	61	STEEL - PERFORATED OR SLOTTED CASING	6	413			0	GERBEN BOSCHMA DAIRY
617512	55	381986.9	3697979	NON-EXEMPT	310	0	OTHER - BLACK STEEL - IRON - SEAMLESS	8	298	NO PUMP CODE LISTED	NO POWER CODE LISTED	74	COUNTRY PLACE LLC
201045	55	382033.5	3701221	MONITOR	80	58	PLASTIC OR PVC	10	80			0	UNION OIL CO OF CALIFORNIA
545632	55	382033.5	3701221	MONITOR OR PIEZOMETER	80	47	PLASTIC OR PVC	4	80	NO PUMP CODE LISTED	NO POWER CODE LISTED	0	PUREGRO CO,
545633	55	382033.5	3701221	MONITOR OR PIEZOMETER	80	47	PLASTIC OR PVC	4	80	NO PUMP CODE LISTED	NO POWER CODE LISTED	0	PUREGRO CO,
545634	55	382033.5	3701221	MONITOR OR PIEZOMETER	80	47	PLASTIC OR PVC	4	80	NO PUMP CODE LISTED	NO POWER CODE LISTED	0	PUREGRO CO,
545635	55	382033.5	3701221	MONITOR OR PIEZOMETER	80	47	PLASTIC OR PVC	4	80	NO PUMP CODE LISTED	NO POWER CODE LISTED	0	PUREGRO CO,
545636	55	382033.5	3701221	MONITOR OR PIEZOMETER	80	47	PLASTIC OR PVC	4	80	NO PUMP CODE LISTED	NO POWER CODE LISTED	0	PUREGRO CO,
545637	55	382033.5	3701221	MONITOR OR PIEZOMETER	80	47	PLASTIC OR PVC	4	80	NO PUMP CODE LISTED	NO POWER CODE LISTED	0	PUREGRO CO,
545237	55	382033.5	3701221	MONITOR OR PIEZOMETER	0	0	NO CASING CODE LISTED	0	0	NO PUMP CODE LISTED	NO POWER CODE LISTED	0	PUREGRO CO,
545238	55	382033.5	3701221	MONITOR OR PIEZOMETER	0	0	NO CASING CODE LISTED	0	0	NO PUMP CODE LISTED	NO POWER CODE LISTED	0	PUREGRO CO,
545239	55	382033.5	3701221	MONITOR OR PIEZOMETER	0	0	NO CASING CODE LISTED	0	0	NO PUMP CODE LISTED	NO POWER CODE LISTED	0	PUREGRO CO,
588429	55	382033.5	3701221	MONITOR	75	55	PLASTIC OR PVC	2	75			0	UNOCAL CORP RPMC 775040
588430	55	382033.5	3701221	MONITOR	75	55	PLASTIC OR PVC	2	75			0	UNOCAL CORP RPMC 775040
588431	55	382033.5	3701221	MONITOR	75	55	PLASTIC OR PVC	2	75			0	UNOCAL CORP RPMC 775040
588432	55	382033.5	3701221	MONITOR	75	55	PLASTIC OR PVC	2	75			0	UNOCAL CORP RPMC 775040
596977	55	382033.5	3701221	MONITOR	110	59	PLASTIC OR PVC	5	110			0	UNOCAL CORPORATION
596978	55	382033.5	3701221	MONITOR	110	59	PLASTIC OR PVC	5	110			0	UNOCAL CORPORATION
596979	55	382033.5	3701221	MONITOR	110	59	PLASTIC OR PVC	5	110			0	UNOCAL CORPORATION
548486	55	382436.4	3701421	MONITOR OR PIEZOMETER	75	55	PLASTIC OR PVC	4	75	NO PUMP CODE LISTED	NO POWER CODE LISTED	0	TOLLESON UNION HIGH SCHOOL DISTRICT
548487	55	382436.4	3701421	MONITOR OR PIEZOMETER	75	55	PLASTIC OR PVC	4	75	NO PUMP CODE LISTED	NO POWER CODE LISTED	0	TOLLESON UNION HIGH SCHOOL DISTRICT
548488	55	382436.4	3701421	MONITOR OR PIEZOMETER	75	57	PLASTIC OR PVC	4	74	NO PUMP CODE LISTED	NO POWER CODE LISTED	0	TOLLESON UNION HIGH,
550131	55	382436.4	3701421	MONITOR OR PIEZOMETER	75	57	PLASTIC OR PVC	1	48	NO PUMP CODE LISTED	NO POWER CODE LISTED	0	TOLLESON UNION HIGH SCHOOL DISTRICT
550132	55	382436.4	3701421	MONITOR OR PIEZOMETER	75	57	PLASTIC OR PVC	1	75	NO PUMP CODE LISTED	NO POWER CODE LISTED	0	TOLLESON UNION HIGH SCHOOL DISTRICT
550133	55	382436.4	3701421	MONITOR OR PIEZOMETER	75	57	PLASTIC OR PVC	1	75	NO PUMP CODE LISTED	NO POWER CODE LISTED	0	TOLLESON UNION HIGH SCHOOL DISTRICT
907934	55	382436.4	3701421	MONITOR	100	80	STEEL - PERFORATED OR SLOTTED CASING	0	100			0	TOLLESON UNION HIGH SCHOOL DISTRICT
503822	55	382236.1	3701422	EXPLORATION	620	92	STEEL - PERFORATED OR SLOTTED CASING	10	564	NO PUMP CODE LISTED	NO POWER CODE LISTED	0	TOLLESON, CITY OF,
617701	55	381844	3703638	NON-EXEMPT	483	0	STEEL - PERFORATED OR SLOTTED CASING	18	483	NO PUMP CODE LISTED	NO POWER CODE LISTED	0	SALT RIVER PROJECT,
607234	55	381844	3703638	NON-EXEMPT	1725	113	STEEL - PERFORATED OR SLOTTED CASING	20	900	NO PUMP CODE LISTED	NO POWER CODE LISTED	3226	ROOSEVELT IRR DIST,

WELLS - W101CPR

REGISTRYID	PROGRAM	UTM_X_METER	UTM_Y_METER	WELLTYPE	WELL_DEPTH	WATER_LEVEL	CASING_TYPE	CASING_DIA	CASING_DEPTH	PUMP_TYPE	PUMP_POWER	PUMPRATE	OWNER_NAME
542210	55	389123.9	3690444	MONITOR OR PIEZOMETER	35	26	PLASTIC OR PVC	2	35	NO PUMP CODE LISTED	NO POWER CODE LISTED	0	ARIZONA DEPT OF TRANSPORTATION
542211	55	389123.9	3690444	MONITOR OR PIEZOMETER	35	28	PLASTIC OR PVC	2	35	NO PUMP CODE LISTED	NO POWER CODE LISTED	0	ARIZONA DEPT OF TRANSPORTATION
542212	55	389123.9	3690444	MONITOR OR PIEZOMETER	0	0	NO CASING CODE LISTED	0	0	NO PUMP CODE LISTED	NO POWER CODE LISTED	0	ARIZONA DEPT OF TRANSPORTATION
809602	55	389123.9	3690444	NON-EXEMPT	500	100	STEEL - PERFORATED OR SLOTTED CASING	20	500			0	ARIZONA DEPARTMENT OF TRANSPORTATION
542213	55	389132	3690644	MONITOR OR PIEZOMETER	40	30	PLASTIC OR PVC	2	40	NO PUMP CODE LISTED	NO POWER CODE LISTED	0	ARIZONA DEPT OF TRANSPORTATION
542214	55	389132	3690644	MONITOR OR PIEZOMETER	35	28	PLASTIC OR PVC	5	35	NO PUMP CODE LISTED	NO POWER CODE LISTED	0	ARIZONA DEPT OF TRANSPORTATION
542215	55	389132	3690644	MONITOR OR PIEZOMETER	0	0	NO CASING CODE LISTED	0	0	NO PUMP CODE LISTED	NO POWER CODE LISTED	0	ARIZONA DEPT OF TRANSPORTATION
809604	55	388935.5	3690647	NON-EXEMPT	520	41	STEEL - PERFORATED OR SLOTTED CASING	20	420			0	ARIZONA DEPARTMENT OF TRANSPORTATION
580078	55	386436.2	3694077	WITHDRAWAL PERMIT	83	25	STEEL - PERFORATED OR SLOTTED CASING	12	80			0	CITY OF PHOENIX WATER SERVICES
584728	55	386436.2	3694077	NON-EXEMPT	74	28	PLASTIC OR PVC	12	74			0	PCL CIVIL CONSTRUCTORS INC
584729	55	386436.2	3694077	NON-EXEMPT	74	28	PLASTIC OR PVC	12	74			0	PCL CIVIL CONSTRUCTORS INC
584730	55	386436.2	3694077	NON-EXEMPT	75	27	PLASTIC OR PVC	12	75			0	PCL CIVIL CONSTRUCTORS INC
584731	55	386436.2	3694077	NON-EXEMPT	80	27	PLASTIC OR PVC	12	80			0	PCL CIVIL CONSTRUCTORS INC
87542	55	386039.7	3694689	EXEMPT	390	60	STEEL - PERFORATED OR SLOTTED CASING	8	390	CENTRIFUGAL	ELECTRIC MOTOR < 1 HP	20	RUTH WOOTEN KENNELS,
221862	55	386041.7	3694890	EXEMPT	200	37	STEEL - PERFORATED OR SLOTTED CASING	6	200			0	REBECA CERNA
584334	55	386041.7	3694890	EXEMPT	160	40	STEEL - PERFORATED OR SLOTTED CASING	6	160			0	LYLE ASKREN
583205	55	385841.2	3694894	EXEMPT	160	50	STEEL - PERFORATED OR SLOTTED CASING	6	160			0	JOSE SERRATO
514691	55	385843.3	3695096	DOMESTIC STOCK EXEMPT	360	30	STEEL - PERFORATED OR SLOTTED CASING	6	270	SUBMERSIBLE	ELECTRIC MOTOR 1 - 5 HP	30	BURKS, EUGENE,S
516700	55	384188.8	3697264	DOMESTIC STOCK EXEMPT	417	34	STEEL - PERFORATED OR SLOTTED CASING	8	359	SUBMERSIBLE	ELECTRIC MOTOR 1 - 5 HP	35	VAN HOFWEGEN, ROBERT,
516699	55	384389	3697289	DOMESTIC STOCK EXEMPT	0	0	NO CASING CODE LISTED	0	0	NO PUMP CODE LISTED	NO POWER CODE LISTED	0	ROBERT VAN HOFWEGEN
524960	55	384389	3697289	NON-SERVICE	455	43	STEEL - PERFORATED OR SLOTTED CASING	8	416	SUBMERSIBLE	ELECTRIC MOTOR 1 - 5 HP	90	
804665	55	383956.2	3698654	NON-EXEMPT	285	70	STEEL - PERFORATED OR SLOTTED CASING	16	285	TURBINE	ELECTRIC MOTOR > 100 HP	250	STANDARD PACIFIC INC
548486	55	382436.4	3701421	MONITOR OR PIEZOMETER	75	55	PLASTIC OR PVC	4	75	NO PUMP CODE LISTED	NO POWER CODE LISTED	0	TOLLESON UNION HIGH SCHOOL DISTRICT
548487	55	382436.4	3701421	MONITOR OR PIEZOMETER	75	55	PLASTIC OR PVC	4	75	NO PUMP CODE LISTED	NO POWER CODE LISTED	0	TOLLESON UNION HIGH SCHOOL DISTRICT
548488	55	382436.4	3701421	MONITOR OR PIEZOMETER	75	57	PLASTIC OR PVC	4	74	NO PUMP CODE LISTED	NO POWER CODE LISTED	0	TOLLESON UNION HIGH,
550131	55	382436.4	3701421	MONITOR OR PIEZOMETER	75	57	PLASTIC OR PVC	1	48	NO PUMP CODE LISTED	NO POWER CODE LISTED	0	TOLLESON UNION HIGH SCHOOL DISTRICT
550132	55	382436.4	3701421	MONITOR OR PIEZOMETER	75	57	PLASTIC OR PVC	1	75	NO PUMP CODE LISTED	NO POWER CODE LISTED	0	TOLLESON UNION HIGH SCHOOL DISTRICT
550133	55	382436.4	3701421	MONITOR OR PIEZOMETER	75	57	PLASTIC OR PVC	1	75	NO PUMP CODE LISTED	NO POWER CODE LISTED	0	TOLLESON UNION HIGH SCHOOL DISTRICT
907934	55	382436.4	3701421	MONITOR	100	80	STEEL - PERFORATED OR SLOTTED CASING	0	100			0	TOLLESON UNION HIGH SCHOOL DISTRICT
503822	55	382236.1	3701422	EXPLORATION	620	92	STEEL - PERFORATED OR SLOTTED CASING	10	564	NO PUMP CODE LISTED	NO POWER CODE LISTED	0	TOLLESON, CITY OF,
482172	55	382040.1	3702029	EXEMPT	0	0		0	0			0	SURE-LOCK IV LLC
605370	55	382040.1	3702029	EXEMPT	0	0	STEEL - PERFORATED OR SLOTTED CASING	8	0	NO PUMP CODE LISTED	NO POWER CODE LISTED	20	COWDEN,E R

WELLS - W101CFR

REGISTRYID	PROGRAM	UTM_X_METER	UTM_Y_METER	WELLTYPE	WELL_DEPTH	WATER_LEVEL	CASING_TYPE	CASING_DIA	CASING_DEPTH	PUMP_TYPE	PUMP_POWER	PUMPRATE	OWNER_NAME
542210	55	389123.9	3690444	MONITOR OR PIEZOMETER	35	26	PLASTIC OR PVC	2	35	NO PUMP CODE LISTED	NO POWER CODE LISTED	0	ARIZONA DEPT OF TRANSPORTATION
542211	55	389123.9	3690444	MONITOR OR PIEZOMETER	35	28	PLASTIC OR PVC	2	35	NO PUMP CODE LISTED	NO POWER CODE LISTED	0	ARIZONA DEPT OF TRANSPORTATION
542212	55	389123.9	3690444	MONITOR OR PIEZOMETER	0	0	NO CASING CODE LISTED	0	0	NO PUMP CODE LISTED	NO POWER CODE LISTED	0	ARIZONA DEPT OF TRANSPORTATION
809602	55	389123.9	3690444	NON-EXEMPT	500	100	STEEL - PERFORATED OR SLOTTED CASING	20	500			0	ARIZONA DEPARTMENT OF TRANSPORTATION
542213	55	389132	3690644	MONITOR OR PIEZOMETER	40	30	PLASTIC OR PVC	2	40	NO PUMP CODE LISTED	NO POWER CODE LISTED	0	ARIZONA DEPT OF TRANSPORTATION
542214	55	389132	3690644	MONITOR OR PIEZOMETER	35	28	PLASTIC OR PVC	5	35	NO PUMP CODE LISTED	NO POWER CODE LISTED	0	ARIZONA DEPT OF TRANSPORTATION
542215	55	389132	3690644	MONITOR OR PIEZOMETER	0	0	NO CASING CODE LISTED	0	0	NO PUMP CODE LISTED	NO POWER CODE LISTED	0	ARIZONA DEPT OF TRANSPORTATION
809604	55	388935.5	3690647	NON-EXEMPT	520	41	STEEL - PERFORATED OR SLOTTED CASING	20	420			0	ARIZONA DEPARTMENT OF TRANSPORTATION
580078	55	386436.2	3694077	WITHDRAWAL PERMIT	83	25	STEEL - PERFORATED OR SLOTTED CASING	12	80			0	CITY OF PHOENIX WATER SERVICES
584728	55	386436.2	3694077	NON-EXEMPT	74	28	PLASTIC OR PVC	12	74			0	PCL CIVIL CONSTRUCTORS INC
584729	55	386436.2	3694077	NON-EXEMPT	74	28	PLASTIC OR PVC	12	74			0	PCL CIVIL CONSTRUCTORS INC
584730	55	386436.2	3694077	NON-EXEMPT	75	27	PLASTIC OR PVC	12	75			0	PCL CIVIL CONSTRUCTORS INC
584731	55	386436.2	3694077	NON-EXEMPT	80	27	PLASTIC OR PVC	12	80			0	PCL CIVIL CONSTRUCTORS INC
87542	55	386039.7	3694689	EXEMPT	390	60	STEEL - PERFORATED OR SLOTTED CASING	8	390	CENTRIFUGAL	ELECTRIC MOTOR < 1 HP	20	RUTH WOOTEN KENNELS,
221862	55	386041.7	3694890	EXEMPT	200	37	STEEL - PERFORATED OR SLOTTED CASING	6	200			0	REBECA CERNA
584334	55	386041.7	3694890	EXEMPT	160	40	STEEL - PERFORATED OR SLOTTED CASING	6	160			0	LYLE ASKREN
583205	55	385841.2	3694894	EXEMPT	160	50	STEEL - PERFORATED OR SLOTTED CASING	6	160			0	JOSE SERRATO
514691	55	385843.3	3695096	DOMESTIC STOCK EXEMPT	360	30	STEEL - PERFORATED OR SLOTTED CASING	6	270	SUBMERSIBLE	ELECTRIC MOTOR 1 - 5 HP	30	BURKS, EUGENE,S
516700	55	384188.8	3697264	DOMESTIC STOCK EXEMPT	417	34	STEEL - PERFORATED OR SLOTTED CASING	8	359	SUBMERSIBLE	ELECTRIC MOTOR 1 - 5 HP	35	VAN HOFWEGEN, ROBERT,
516699	55	384389	3697289	DOMESTIC STOCK EXEMPT	0	0	NO CASING CODE LISTED	0	0	NO PUMP CODE LISTED	NO POWER CODE LISTED	0	ROBERT VAN HOFWEGEN
524960	55	384389	3697289	NON-SERVICE	455	43	STEEL - PERFORATED OR SLOTTED CASING	8	416	SUBMERSIBLE	ELECTRIC MOTOR 1 - 5 HP	90	
804665	55	383956.2	3698654	NON-EXEMPT	285	70	STEEL - PERFORATED OR SLOTTED CASING	16	285	TURBINE	ELECTRIC MOTOR > 100 HP	250	STANDARD PACIFIC INC
548486	55	382436.4	3701421	MONITOR OR PIEZOMETER	75	55	PLASTIC OR PVC	4	75	NO PUMP CODE LISTED	NO POWER CODE LISTED	0	TOLLESON UNION HIGH SCHOOL DISTRICT
548487	55	382436.4	3701421	MONITOR OR PIEZOMETER	75	55	PLASTIC OR PVC	4	75	NO PUMP CODE LISTED	NO POWER CODE LISTED	0	TOLLESON UNION HIGH SCHOOL DISTRICT
548488	55	382436.4	3701421	MONITOR OR PIEZOMETER	75	57	PLASTIC OR PVC	4	74	NO PUMP CODE LISTED	NO POWER CODE LISTED	0	TOLLESON UNION HIGH,
550131	55	382436.4	3701421	MONITOR OR PIEZOMETER	75	57	PLASTIC OR PVC	1	48	NO PUMP CODE LISTED	NO POWER CODE LISTED	0	TOLLESON UNION HIGH SCHOOL DISTRICT
550132	55	382436.4	3701421	MONITOR OR PIEZOMETER	75	57	PLASTIC OR PVC	1	75	NO PUMP CODE LISTED	NO POWER CODE LISTED	0	TOLLESON UNION HIGH SCHOOL DISTRICT
550133	55	382436.4	3701421	MONITOR OR PIEZOMETER	75	57	PLASTIC OR PVC	1	75	NO PUMP CODE LISTED	NO POWER CODE LISTED	0	TOLLESON UNION HIGH SCHOOL DISTRICT
907934	55	382436.4	3701421	MONITOR	100	80	STEEL - PERFORATED OR SLOTTED CASING	0	100			0	TOLLESON UNION HIGH SCHOOL DISTRICT
503822	55	382236.1	3701422	EXPLORATION	620	92	STEEL - PERFORATED OR SLOTTED CASING	10	564	NO PUMP CODE LISTED	NO POWER CODE LISTED	0	TOLLESON, CITY OF,
617701	55	381844	3703638	NON-EXEMPT	483	0	STEEL - PERFORATED OR SLOTTED CASING	18	483	NO PUMP CODE LISTED	NO POWER CODE LISTED	0	SALT RIVER PROJECT,
607234	55	381844	3703638	NON-EXEMPT	1725	113	STEEL - PERFORATED OR SLOTTED CASING	20	900	NO PUMP CODE LISTED	NO POWER CODE LISTED	3226	ROOSEVELT IRR DIST,

WELLS - W101EPR

REGISTRYID	PROGRAM	UTM_X_METER	UTM_Y_METER	WELLTYPE	WELL_DEPTH	WATER_LEVEL	CASING_TYPE	CASING_DIA	CASING_DEPTH	PUMP_TYPE	PUMP_POWER	PUMPRATE	OWNER_NAME
542210	55	389123.9	3690444	MONITOR OR PIEZOMETER	35	26	PLASTIC OR PVC	2	35	NO PUMP CODE LISTED	NO POWER CODE LISTED	0	ARIZONA DEPT OF TRANSPORTATION
542211	55	389123.9	3690444	MONITOR OR PIEZOMETER	35	28	PLASTIC OR PVC	2	35	NO PUMP CODE LISTED	NO POWER CODE LISTED	0	ARIZONA DEPT OF TRANSPORTATION
542212	55	389123.9	3690444	MONITOR OR PIEZOMETER	0	0	NO CASING CODE LISTED	0	0	NO PUMP CODE LISTED	NO POWER CODE LISTED	0	ARIZONA DEPT OF TRANSPORTATION
809602	55	389123.9	3690444	NON-EXEMPT	500	100	STEEL - PERFORATED OR SLOTTED CASING	20	500			0	ARIZONA DEPARTMENT OF TRANSPORTATION
542213	55	389132	3690644	MONITOR OR PIEZOMETER	40	30	PLASTIC OR PVC	2	40	NO PUMP CODE LISTED	NO POWER CODE LISTED	0	ARIZONA DEPT OF TRANSPORTATION
542214	55	389132	3690644	MONITOR OR PIEZOMETER	35	28	PLASTIC OR PVC	5	35	NO PUMP CODE LISTED	NO POWER CODE LISTED	0	ARIZONA DEPT OF TRANSPORTATION
542215	55	389132	3690644	MONITOR OR PIEZOMETER	0	0	NO CASING CODE LISTED	0	0	NO PUMP CODE LISTED	NO POWER CODE LISTED	0	ARIZONA DEPT OF TRANSPORTATION
809604	55	388935.5	3690647	NON-EXEMPT	520	41	STEEL - PERFORATED OR SLOTTED CASING	20	420			0	ARIZONA DEPARTMENT OF TRANSPORTATION
580078	55	386436.2	3694077	WITHDRAWAL PERMIT	83	25	STEEL - PERFORATED OR SLOTTED CASING	12	80			0	CITY OF PHOENIX WATER SERVICES
584728	55	386436.2	3694077	NON-EXEMPT	74	28	PLASTIC OR PVC	12	74			0	PCL CIVIL CONSTRUCTORS INC
584729	55	386436.2	3694077	NON-EXEMPT	74	28	PLASTIC OR PVC	12	74			0	PCL CIVIL CONSTRUCTORS INC
584730	55	386436.2	3694077	NON-EXEMPT	75	27	PLASTIC OR PVC	12	75			0	PCL CIVIL CONSTRUCTORS INC
584731	55	386436.2	3694077	NON-EXEMPT	80	27	PLASTIC OR PVC	12	80			0	PCL CIVIL CONSTRUCTORS INC
87542	55	386039.7	3694689	EXEMPT	390	60	STEEL - PERFORATED OR SLOTTED CASING	8	390	CENTRIFUGAL	ELECTRIC MOTOR < 1 HP	20	RUTH WOOTEN KENNELS,
221862	55	386041.7	3694890	EXEMPT	200	37	STEEL - PERFORATED OR SLOTTED CASING	6	200			0	REBECA CERNA
584334	55	386041.7	3694890	EXEMPT	160	40	STEEL - PERFORATED OR SLOTTED CASING	6	160			0	LYLE ASKREN
583205	55	385841.2	3694894	EXEMPT	160	50	STEEL - PERFORATED OR SLOTTED CASING	6	160			0	JOSE SERRATO
514691	55	385843.3	3695096	DOMESTIC STOCK EXEMPT	360	30	STEEL - PERFORATED OR SLOTTED CASING	6	270	SUBMERSIBLE	ELECTRIC MOTOR 1 - 5 HP	30	BURKS, EUGENE,S
634571	55	385069.7	3697135	EXEMPT	350	60	NO CASING CODE LISTED	0	350	NO PUMP CODE LISTED	NO POWER CODE LISTED	6	DAVID VAN HOFWEGEN
804665	55	383956.2	3698654	NON-EXEMPT	285	70	STEEL - PERFORATED OR SLOTTED CASING	16	285	TURBINE	ELECTRIC MOTOR > 100 HP	250	STANDARD PACIFIC INC
548486	55	382436.4	3701421	MONITOR OR PIEZOMETER	75	55	PLASTIC OR PVC	4	75	NO PUMP CODE LISTED	NO POWER CODE LISTED	0	TOLLESON UNION HIGH SCHOOL DISTRICT
548487	55	382436.4	3701421	MONITOR OR PIEZOMETER	75	55	PLASTIC OR PVC	4	75	NO PUMP CODE LISTED	NO POWER CODE LISTED	0	TOLLESON UNION HIGH SCHOOL DISTRICT
548488	55	382436.4	3701421	MONITOR OR PIEZOMETER	75	57	PLASTIC OR PVC	4	74	NO PUMP CODE LISTED	NO POWER CODE LISTED	0	TOLLESON UNION HIGH,
550131	55	382436.4	3701421	MONITOR OR PIEZOMETER	75	57	PLASTIC OR PVC	1	48	NO PUMP CODE LISTED	NO POWER CODE LISTED	0	TOLLESON UNION HIGH SCHOOL DISTRICT
550132	55	382436.4	3701421	MONITOR OR PIEZOMETER	75	57	PLASTIC OR PVC	1	75	NO PUMP CODE LISTED	NO POWER CODE LISTED	0	TOLLESON UNION HIGH SCHOOL DISTRICT
550133	55	382436.4	3701421	MONITOR OR PIEZOMETER	75	57	PLASTIC OR PVC	1	75	NO PUMP CODE LISTED	NO POWER CODE LISTED	0	TOLLESON UNION HIGH SCHOOL DISTRICT
907934	55	382436.4	3701421	MONITOR	100	80	STEEL - PERFORATED OR SLOTTED CASING	0	100			0	TOLLESON UNION HIGH SCHOOL DISTRICT
503822	55	382236.1	3701422	EXPLORATION	620	92	STEEL - PERFORATED OR SLOTTED CASING	10	564	NO PUMP CODE LISTED	NO POWER CODE LISTED	0	TOLLESON, CITY OF,
482172	55	382040.1	3702029	EXEMPT	0	0		0	0			0	SURE-LOCK IV LLC
605370	55	382040.1	3702029	EXEMPT	0	0	STEEL - PERFORATED OR SLOTTED CASING	8	0	NO PUMP CODE LISTED	NO POWER CODE LISTED	20	COWDEN,E R

WELLS - W101EFR

REGISTRYID	PROGRAM	UTM_X_METER	UTM_Y_METER	WELLTYPE	WELL_DEPTH	WATER_LEVEL	CASING_TYPE	CASING_DIA	CASING_DEPTH	PUMP_TYPE	PUMP_POWER	PUMPRATE	OWNER_NAME
542210	55	389123.9	3690444	MONITOR OR PIEZOMETER	35	26	PLASTIC OR PVC	2	35	NO PUMP CODE LISTED	NO POWER CODE LISTED	0	ARIZONA DEPT OF TRANSPORTATION
542211	55	389123.9	3690444	MONITOR OR PIEZOMETER	35	28	PLASTIC OR PVC	2	35	NO PUMP CODE LISTED	NO POWER CODE LISTED	0	ARIZONA DEPT OF TRANSPORTATION
542212	55	389123.9	3690444	MONITOR OR PIEZOMETER	0	0	NO CASING CODE LISTED	0	0	NO PUMP CODE LISTED	NO POWER CODE LISTED	0	ARIZONA DEPT OF TRANSPORTATION
809602	55	389123.9	3690444	NON-EXEMPT	500	100	STEEL - PERFORATED OR SLOTTED CASING	20	500			0	ARIZONA DEPARTMENT OF TRANSPORTATION
542213	55	389132	3690644	MONITOR OR PIEZOMETER	40	30	PLASTIC OR PVC	2	40	NO PUMP CODE LISTED	NO POWER CODE LISTED	0	ARIZONA DEPT OF TRANSPORTATION
542214	55	389132	3690644	MONITOR OR PIEZOMETER	35	28	PLASTIC OR PVC	5	35	NO PUMP CODE LISTED	NO POWER CODE LISTED	0	ARIZONA DEPT OF TRANSPORTATION
542215	55	389132	3690644	MONITOR OR PIEZOMETER	0	0	NO CASING CODE LISTED	0	0	NO PUMP CODE LISTED	NO POWER CODE LISTED	0	ARIZONA DEPT OF TRANSPORTATION
809604	55	388935.5	3690647	NON-EXEMPT	520	41	STEEL - PERFORATED OR SLOTTED CASING	20	420			0	ARIZONA DEPARTMENT OF TRANSPORTATION
580078	55	386436.2	3694077	WITHDRAWAL PERMIT	83	25	STEEL - PERFORATED OR SLOTTED CASING	12	80			0	CITY OF PHOENIX WATER SERVICES
584728	55	386436.2	3694077	NON-EXEMPT	74	28	PLASTIC OR PVC	12	74			0	PCL CIVIL CONSTRUCTORS INC
584729	55	386436.2	3694077	NON-EXEMPT	74	28	PLASTIC OR PVC	12	74			0	PCL CIVIL CONSTRUCTORS INC
584730	55	386436.2	3694077	NON-EXEMPT	75	27	PLASTIC OR PVC	12	75			0	PCL CIVIL CONSTRUCTORS INC
584731	55	386436.2	3694077	NON-EXEMPT	80	27	PLASTIC OR PVC	12	80			0	PCL CIVIL CONSTRUCTORS INC
87542	55	386039.7	3694689	EXEMPT	390	60	STEEL - PERFORATED OR SLOTTED CASING	8	390	CENTRIFUGAL	ELECTRIC MOTOR < 1 HP	20	RUTH WOOTEN KENNELS,
221862	55	386041.7	3694890	EXEMPT	200	37	STEEL - PERFORATED OR SLOTTED CASING	6	200			0	REBECA CERNA
584334	55	386041.7	3694890	EXEMPT	160	40	STEEL - PERFORATED OR SLOTTED CASING	6	160			0	LYLE ASKREN
583205	55	385841.2	3694894	EXEMPT	160	50	STEEL - PERFORATED OR SLOTTED CASING	6	160			0	JOSE SERRATO
514691	55	385843.3	3695096	DOMESTIC STOCK EXEMPT	360	30	STEEL - PERFORATED OR SLOTTED CASING	6	270	SUBMERSIBLE	ELECTRIC MOTOR 1 - 5 HP	30	BURKS, EUGENE,S
634571	55	385069.7	3697135	EXEMPT	350	60	NO CASING CODE LISTED	0	350	NO PUMP CODE LISTED	NO POWER CODE LISTED	6	DAVID VAN HOFWEGEN
804665	55	383956.2	3698654	NON-EXEMPT	285	70	STEEL - PERFORATED OR SLOTTED CASING	16	285	TURBINE	ELECTRIC MOTOR > 100 HP	250	STANDARD PACIFIC INC
548486	55	382436.4	3701421	MONITOR OR PIEZOMETER	75	55	PLASTIC OR PVC	4	75	NO PUMP CODE LISTED	NO POWER CODE LISTED	0	TOLLESON UNION HIGH SCHOOL DISTRICT
548487	55	382436.4	3701421	MONITOR OR PIEZOMETER	75	55	PLASTIC OR PVC	4	75	NO PUMP CODE LISTED	NO POWER CODE LISTED	0	TOLLESON UNION HIGH SCHOOL DISTRICT
548488	55	382436.4	3701421	MONITOR OR PIEZOMETER	75	57	PLASTIC OR PVC	4	74	NO PUMP CODE LISTED	NO POWER CODE LISTED	0	TOLLESON UNION HIGH,
550131	55	382436.4	3701421	MONITOR OR PIEZOMETER	75	57	PLASTIC OR PVC	1	48	NO PUMP CODE LISTED	NO POWER CODE LISTED	0	TOLLESON UNION HIGH SCHOOL DISTRICT
550132	55	382436.4	3701421	MONITOR OR PIEZOMETER	75	57	PLASTIC OR PVC	1	75	NO PUMP CODE LISTED	NO POWER CODE LISTED	0	TOLLESON UNION HIGH SCHOOL DISTRICT
550133	55	382436.4	3701421	MONITOR OR PIEZOMETER	75	57	PLASTIC OR PVC	1	75	NO PUMP CODE LISTED	NO POWER CODE LISTED	0	TOLLESON UNION HIGH SCHOOL DISTRICT
907934	55	382436.4	3701421	MONITOR	100	80	STEEL - PERFORATED OR SLOTTED CASING	0	100			0	TOLLESON UNION HIGH SCHOOL DISTRICT
503822	55	382236.1	3701422	EXPLORATION	620	92	STEEL - PERFORATED OR SLOTTED CASING	10	564	NO PUMP CODE LISTED	NO POWER CODE LISTED	0	TOLLESON, CITY OF,
617701	55	381844	3703638	NON-EXEMPT	483	0	STEEL - PERFORATED OR SLOTTED CASING	18	483	NO PUMP CODE LISTED	NO POWER CODE LISTED	0	SALT RIVER PROJECT,
607234	55	381844	3703638	NON-EXEMPT	1725	113	STEEL - PERFORATED OR SLOTTED CASING	20	900	NO PUMP CODE LISTED	NO POWER CODE LISTED	3226	ROOSEVELT IRR DIST,

WELLS - E1

REGISTRYID	PROGRAM	UTM_X_METER	UTM_Y_METER	WELLTYPE	WELL_DEPTH	WATER_LEVEL	CASING_TYPE	CASING_DIA	CASING_DEPTH	PUMP_TYPE	PUMP_POWER	PUMPRATE	OWNER_NAME
513011	55	407044.6	3684051	NON-SERVICE	0	0	NO CASING CODE LISTED	0	0	NO PUMP CODE LISTED	NO POWER CODE LISTED	0	AMCOR INVEST CORP,
513791	55	407044.6	3684051	NON-EXEMPT	0	0	NO CASING CODE LISTED	0	0	NO PUMP CODE LISTED	NO POWER CODE LISTED	0	GOLDMAN, MILTON & M.,
602186	55	407044.6	3684051	NON-EXEMPT	1040	150	STEEL - PERFORATED OR SLOTTED CASING	16	1040	NO PUMP CODE LISTED	NO POWER CODE LISTED	300	GOLDMAN,M
627890	55	407044.6	3684051	NON-EXEMPT	280	92	STEEL - PERFORATED OR SLOTTED CASING	16	280	NO PUMP CODE LISTED	NO POWER CODE LISTED	1764	LAKEWOOD COMM ASSOC,
627895	55	407044.6	3684051	NON-EXEMPT	1000	130	STEEL - PERFORATED OR SLOTTED CASING	16	1000	NO PUMP CODE LISTED	NO POWER CODE LISTED	300	LAKEWOOD COMM ASSOC,
627891	55	406640.1	3684056	NON-EXEMPT	460	0	OTHER - BLACK STEEL - IRON - SEAMLESS	20	460	NO PUMP CODE LISTED	NO POWER CODE LISTED	130	LAKEWOOD COMM ASSOC,
627892	55	406235.5	3684062	NON-EXEMPT	623	140	STEEL - PERFORATED OR SLOTTED CASING	20	620	NO PUMP CODE LISTED	NO POWER CODE LISTED	2400	LAKEWOOD COMM ASSOC,
627893	55	406235.5	3684062	NON-EXEMPT	520	130	STEEL - PERFORATED OR SLOTTED CASING	20	520	NO PUMP CODE LISTED	NO POWER CODE LISTED	2500	LAKEWOOD COMM ASSOC,
602184	55	404621.1	3684078	NON-EXEMPT	220	160	STEEL - PERFORATED OR SLOTTED CASING	8	220	NO PUMP CODE LISTED	NO POWER CODE LISTED	200	GOLDMAN,M
630348	55	403812.5	3684087	NON-EXEMPT	273	136	STEEL - PERFORATED OR SLOTTED CASING	8	219	NO PUMP CODE LISTED	NO POWER CODE LISTED	40	HIRO & NECTAR INVESTMENT & KWANG CO. LLC
510943	55	403611.4	3684090	NON-SERVICE	0	0	NO CASING CODE LISTED	0	0	NO PUMP CODE LISTED	NO POWER CODE LISTED	0	4140 INVESTMENTS INC,
510944	55	403611.4	3684090	NON-SERVICE	0	0	NO CASING CODE LISTED	0	0	NO PUMP CODE LISTED	NO POWER CODE LISTED	0	4140 INVESTMENTS INC,
630347	55	403611.4	3684090	NON-EXEMPT	357	153	STEEL - PERFORATED OR SLOTTED CASING	10	0	NO PUMP CODE LISTED	NO POWER CODE LISTED	200	HIRO & NECTAR INVESTMENT & KWANG CO. LLC
806716	55	403611.4	3684090	EXEMPT	400	0	STEEL - PERFORATED OR SLOTTED CASING	8	0	NO PUMP CODE LISTED	NO POWER CODE LISTED	0	FOOTHILLS JOINT,
807144	55	403411.2	3684093	EXEMPT	400	0	STEEL - PERFORATED OR SLOTTED CASING	6	0	NO PUMP CODE LISTED	NO POWER CODE LISTED	0	WEBB, DEL E FOOTHLS,
518552	55	394045.9	3684761	EXPLORATION	1610	0	NO CASING CODE LISTED	3	0	NO PUMP CODE LISTED	NO POWER CODE LISTED	0	ADOT,
635905	55	393645.1	3685368	EXEMPT	108	35	STEEL - PERFORATED OR SLOTTED CASING	10	9	NO PUMP CODE LISTED	NO POWER CODE LISTED	8	GUTHRIE, ROBERT,D
636395	55	393645.1	3685368	EXEMPT	114	60	STEEL - PERFORATED OR SLOTTED CASING	8	8	NO PUMP CODE LISTED	NO POWER CODE LISTED	8	GUTHRIE, TROY,
600655	55	392680.4	3686393	EXEMPT	221	162	STEEL - PERFORATED OR SLOTTED CASING	9	222	NO PUMP CODE LISTED	NO POWER CODE LISTED	18	CHOPPO COMMUNITY WELL
581510	55	392281.3	3686803	EXEMPT	260	180	PLASTIC OR PVC	5	260	NO PUMP CODE LISTED	NO POWER CODE LISTED	0	ROBERT & CANDICE DIAZ
214902	55	391881.4	3687213	EXEMPT	0	0		0	0			0	KEITH CALHOUN
622238	55	391881.4	3687213	EXEMPT	200	140	STEEL - PERFORATED OR SLOTTED CASING	8	190	NO PUMP CODE LISTED	NO POWER CODE LISTED	0	LEWIS,O B
622239	55	391881.4	3687213	EXEMPT	240	130	STEEL - PERFORATED OR SLOTTED CASING	8	21	NO PUMP CODE LISTED	NO POWER CODE LISTED	0	LEWIS,O B
622240	55	391881.4	3687213	EXEMPT	180	130	STEEL - PERFORATED OR SLOTTED CASING	8	165	NO PUMP CODE LISTED	NO POWER CODE LISTED	0	LEWIS,O B
622241	55	391881.4	3687213	EXEMPT	170	140	STEEL - PERFORATED OR SLOTTED CASING	8	170	NO PUMP CODE LISTED	NO POWER CODE LISTED	20	LEWIS,O B
590516	55	391683.5	3687614	EXEMPT	250	103	PLASTIC OR PVC	5	245			0	ALVIN LEE HARE
556203	55	391085.7	3688612	EXEMPT	310	50	STEEL - PERFORATED OR SLOTTED CASING	6	310	NO PUMP CODE LISTED	NO POWER CODE LISTED	0	WOOD, WILLIAM,